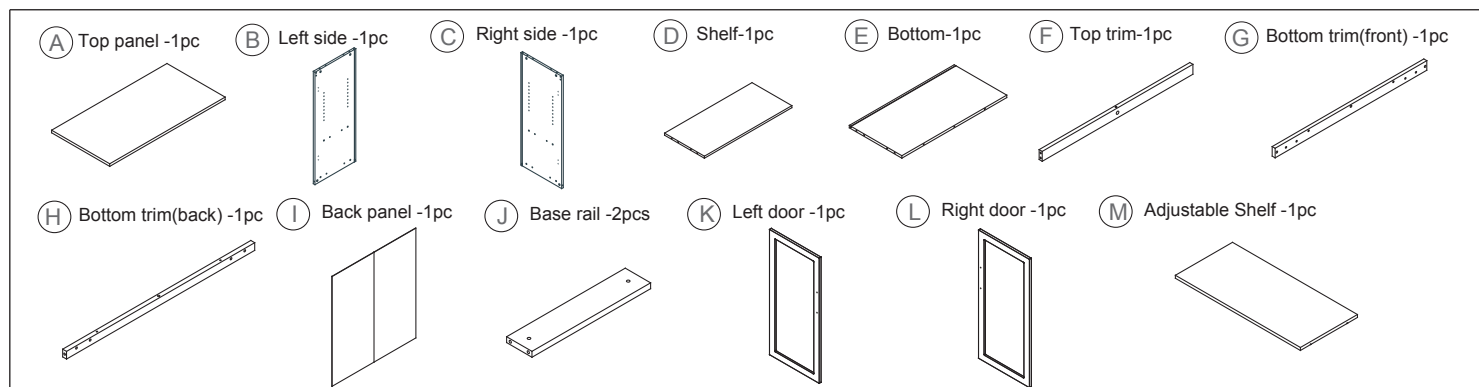


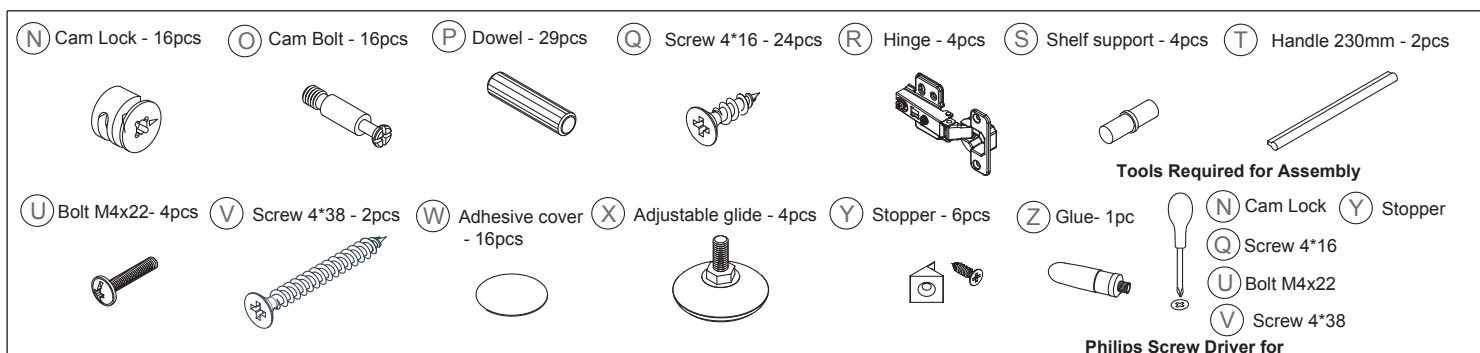
# AT WORK-Wall storage cabinet w/frosted glass doors ASSEMBLY INSTRUCTIONS

**Congratulations on the purchase of your new *Signature Series* product!**

## COMPONENTS

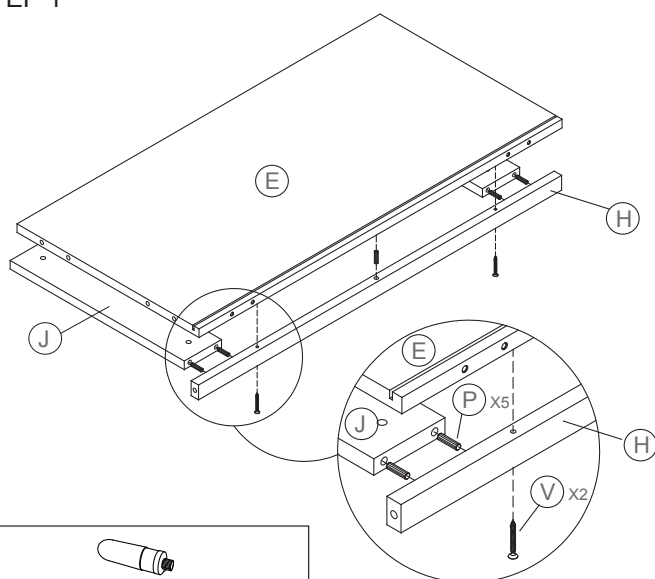


## HARDWARE & TOOLS

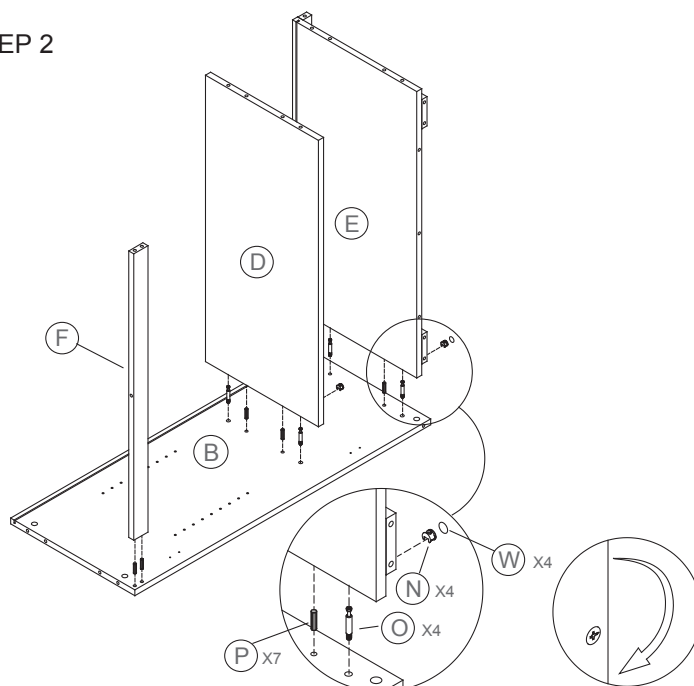


## INSTRUCTIONS

### STEP 1



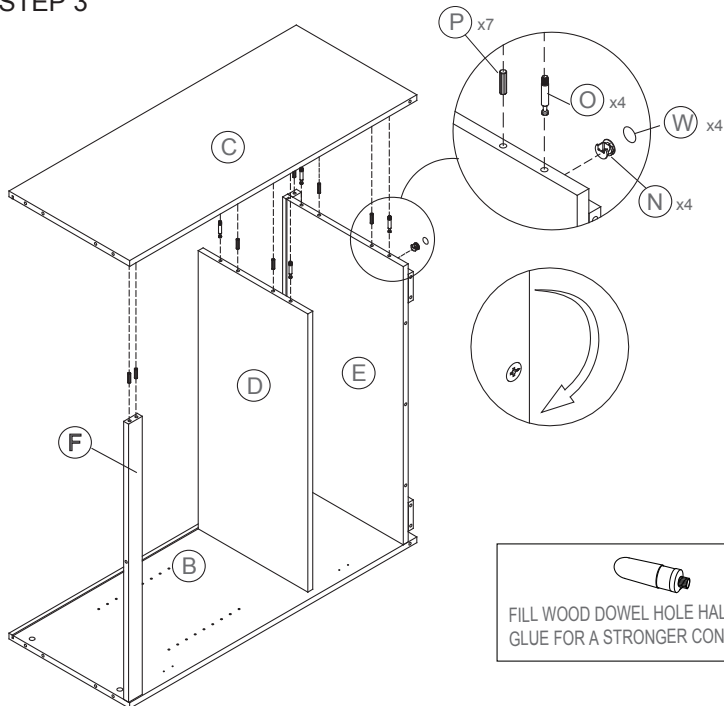
### STEP 2



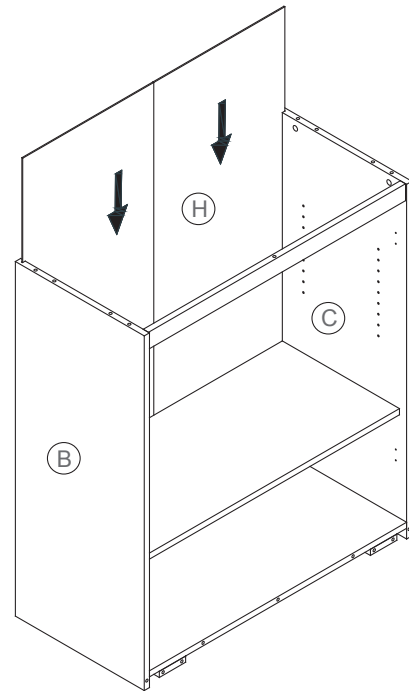
**Congratulations on the purchase of your new *Signature Series* product!**

## INSTRUCTIONS

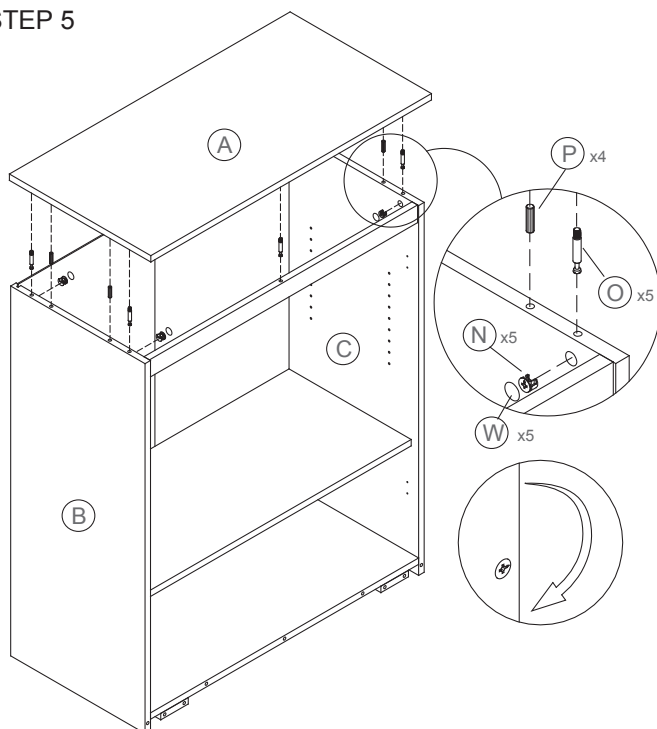
**STEP 3**



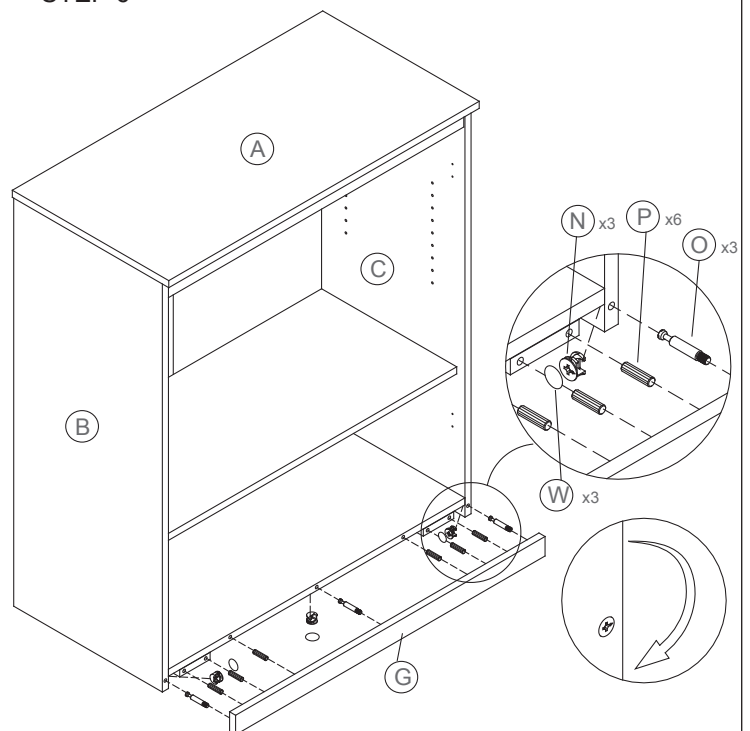
**STEP 4**



**STEP 5**



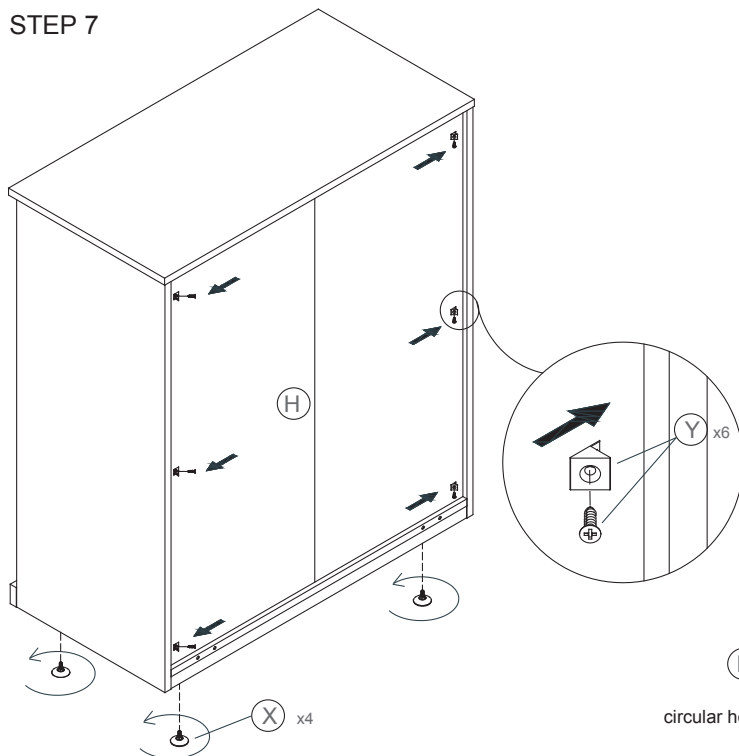
**STEP 6**



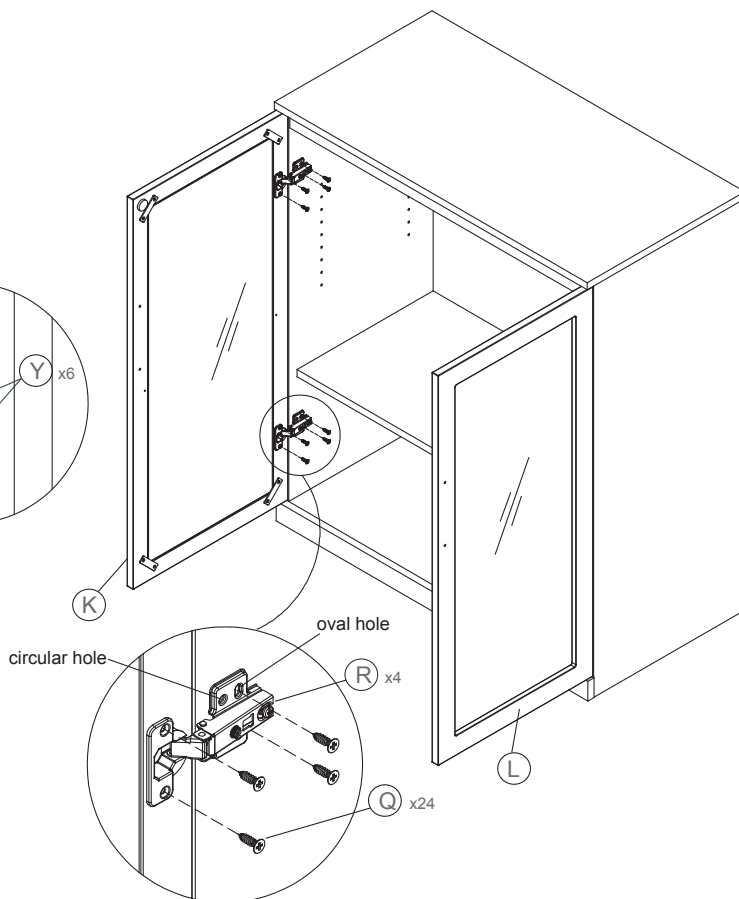
**Congratulations on the purchase of your new *Signature Series* product!**

## INSTRUCTIONS

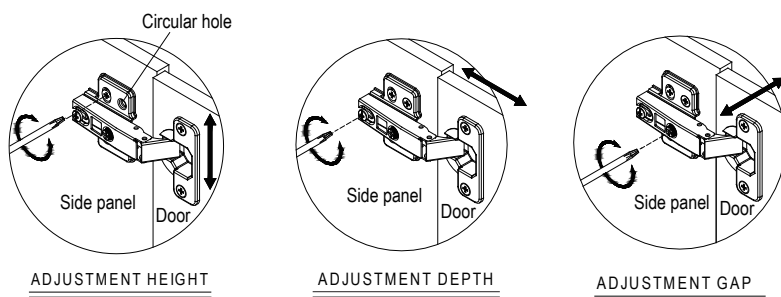
### STEP 7



### STEP 8



### STEP 9

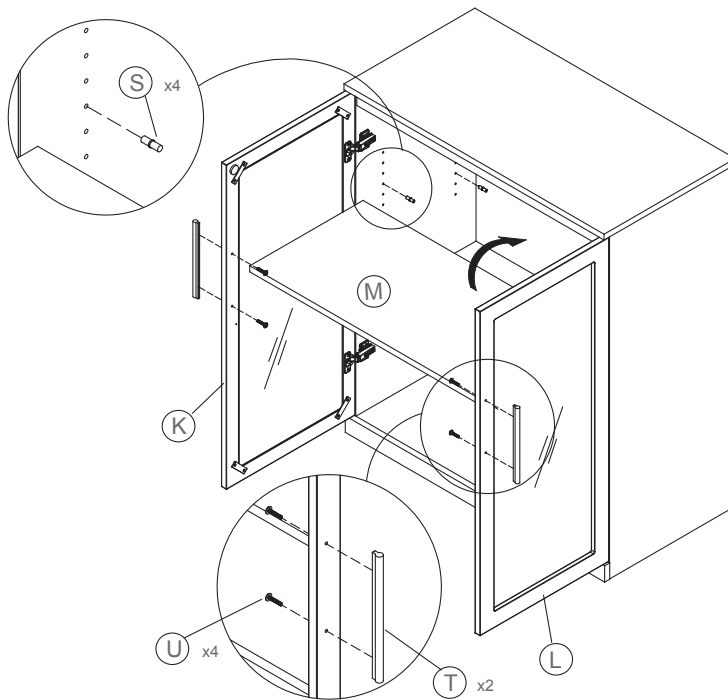


**When adjustment height is OK,  
Then use screw Q to fix the hinge  
in the circular hole**

**Congratulations on the purchase of your new *Signature Series* product!**

## INSTRUCTIONS

### STEP 10



### COMPLETED

