

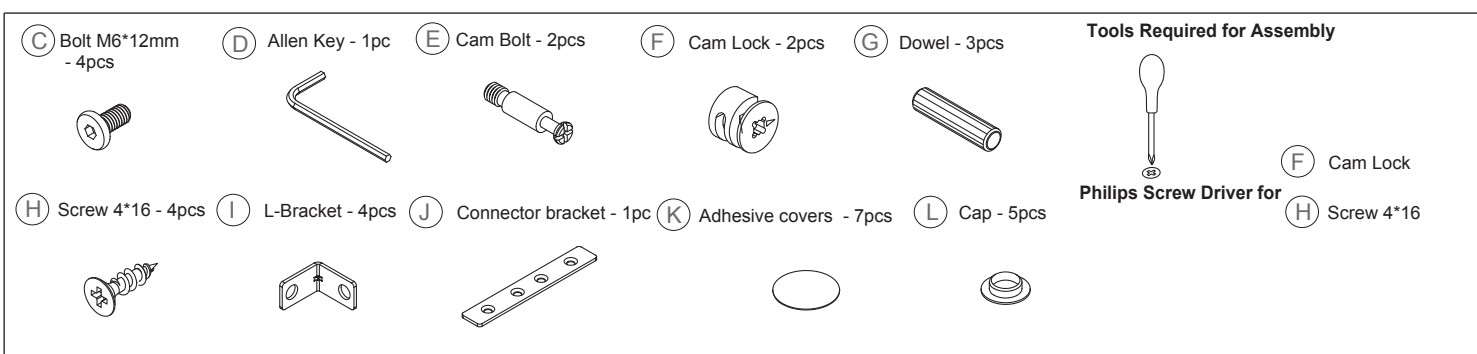
AT WORK- The Panels for 37"x25" Reception Return ASSEMBLY INSTRUCTIONS

Congratulations on the purchase of your new *Signature Series* product!

COMPONENTS

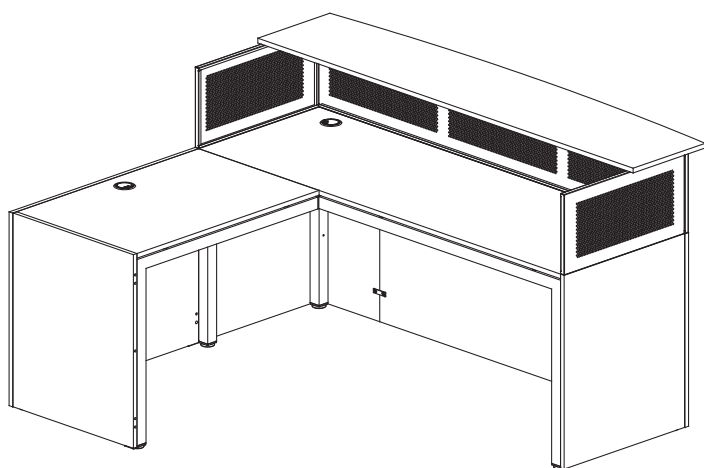


HARDWARE & TOOLS

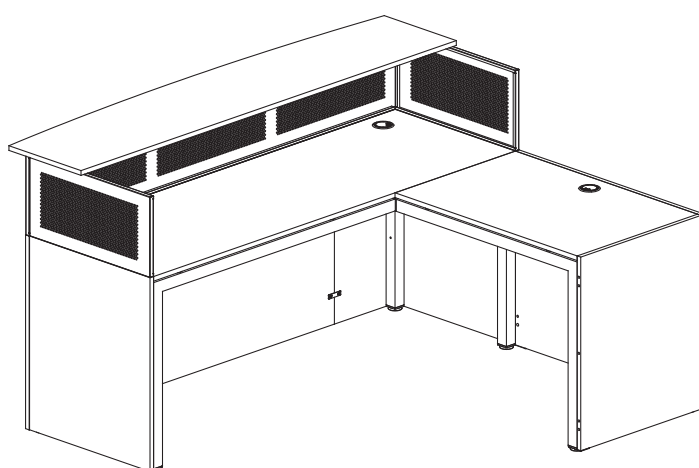


INSTRUCTIONS

COMPLETED



Return at left
(Step1-Step10)



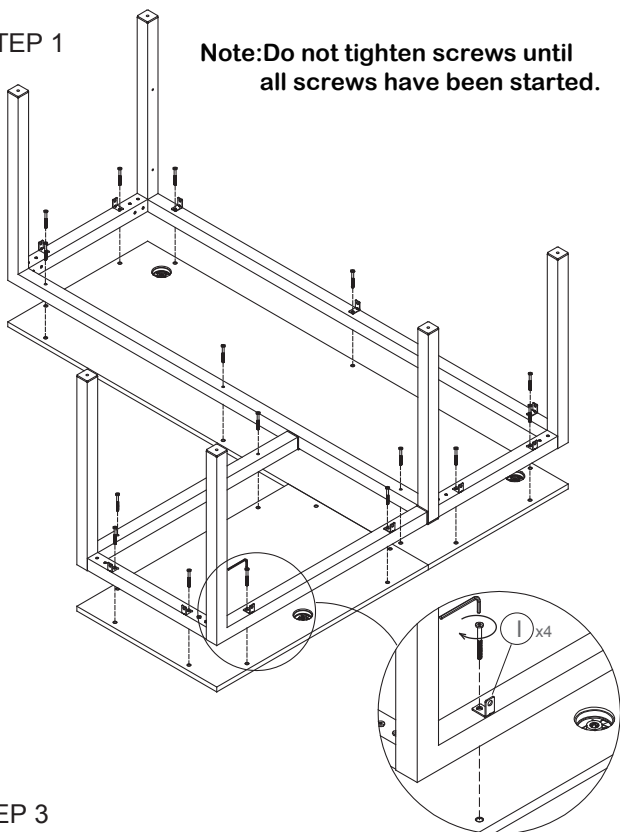
Return at right
(Step11-Step20)

Congratulations on the purchase of your new *Signature Series* product!

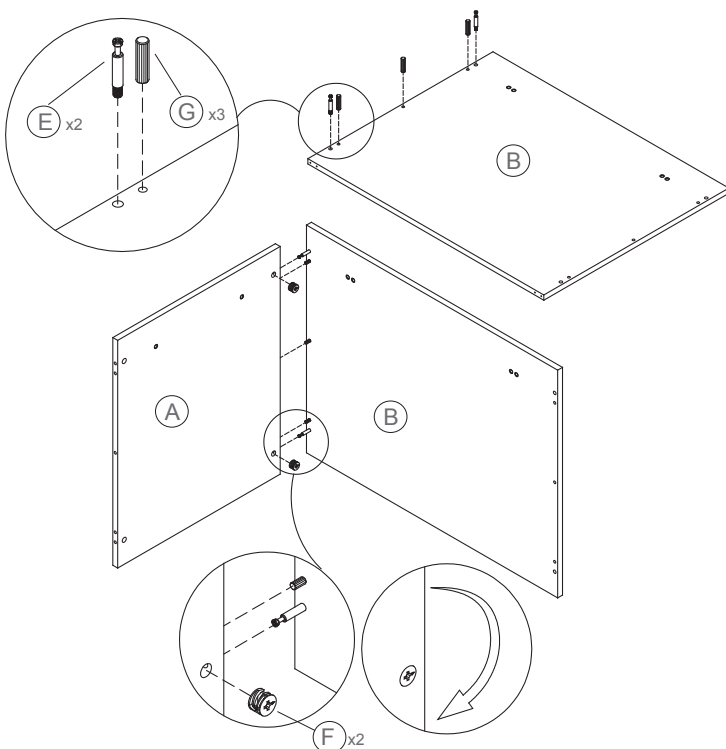
INSTRUCTIONS

STEP 1

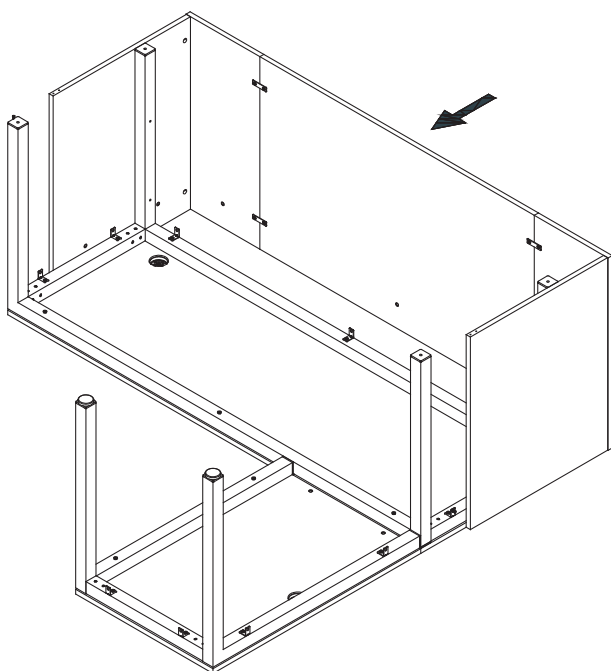
Note: Do not tighten screws until all screws have been started.



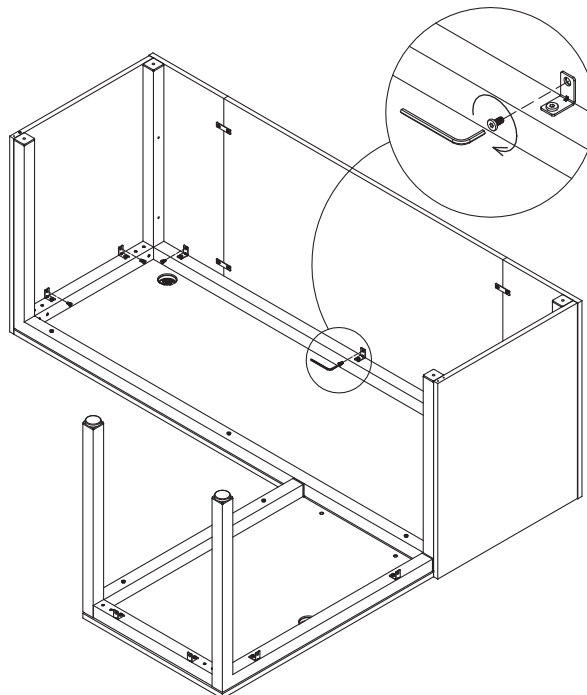
STEP 2



STEP 3



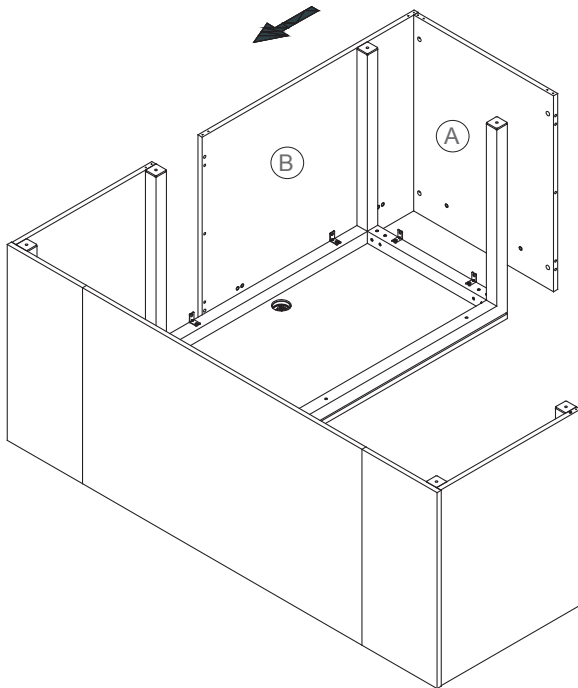
STEP 4



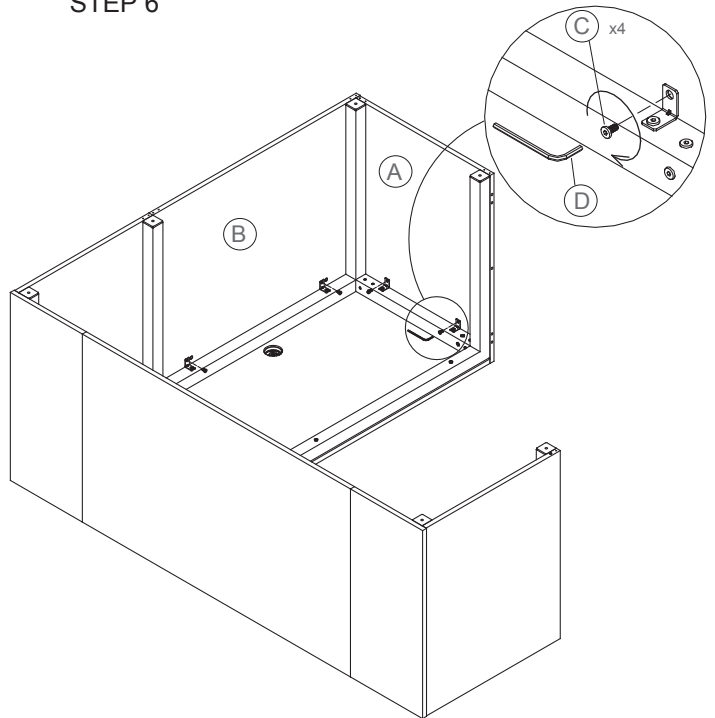
Congratulations on the purchase of your new *Signature Series* product!

INSTRUCTIONS

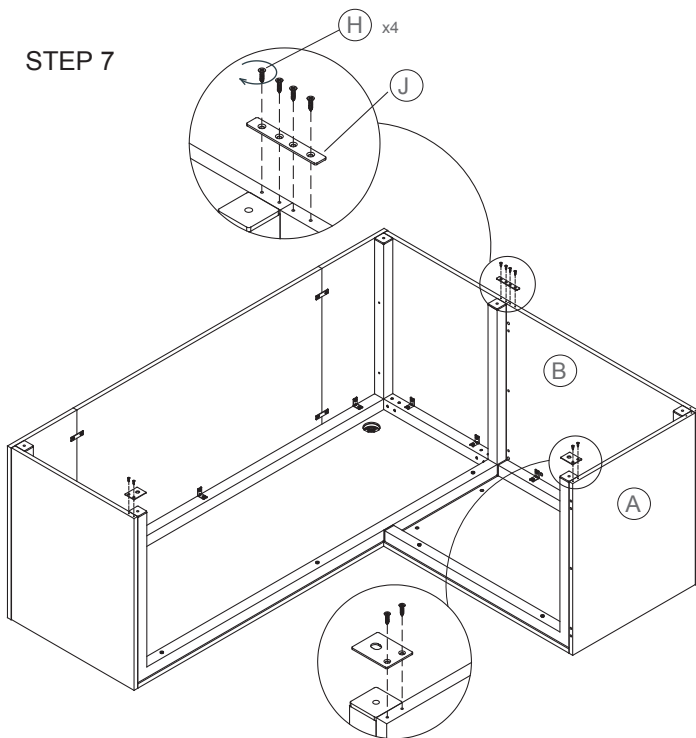
STEP 5



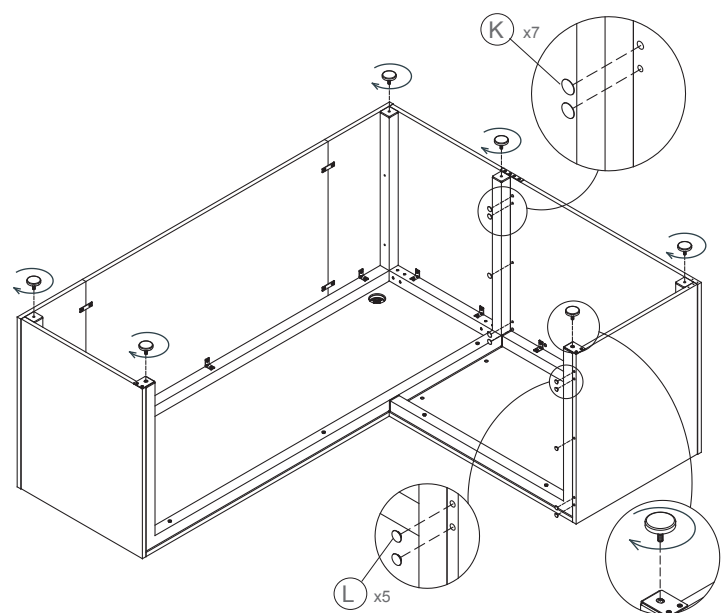
STEP 6



STEP 7



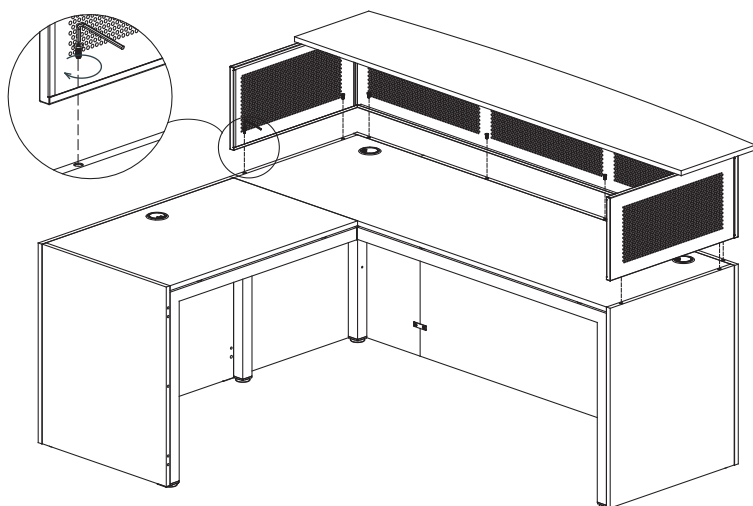
STEP 8



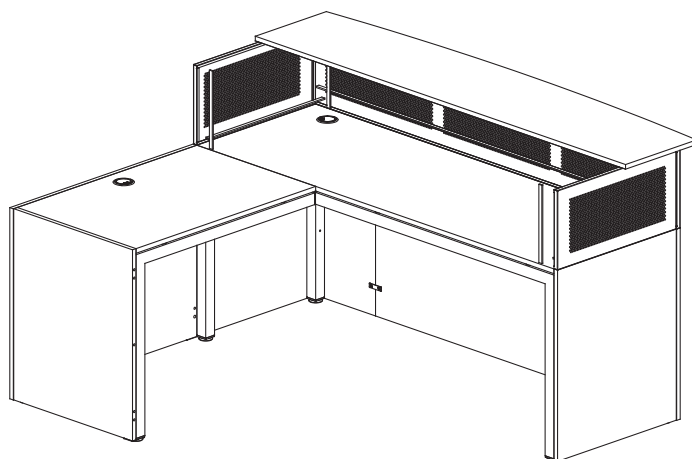
Congratulations on the purchase of your new *Signature Series* product!

INSTRUCTIONS

STEP 9



STEP 10

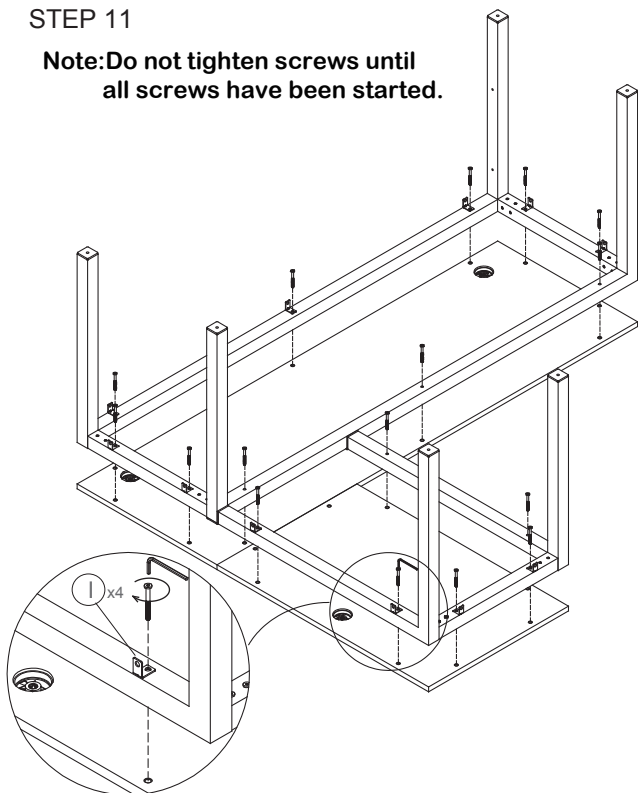


NOTE

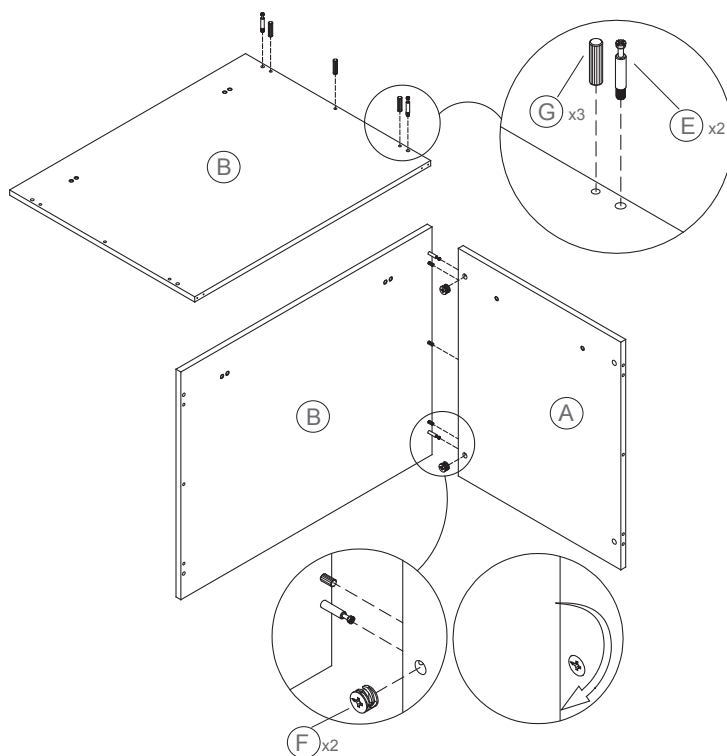
Peel off the backing of the EVA strips and place the strip in the grooves of the panels.

STEP 11

Note: Do not tighten screws until all screws have been started.



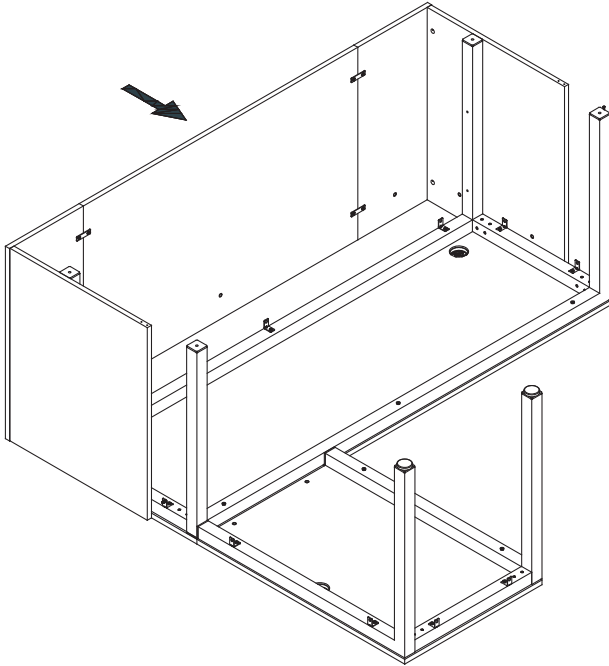
STEP 12



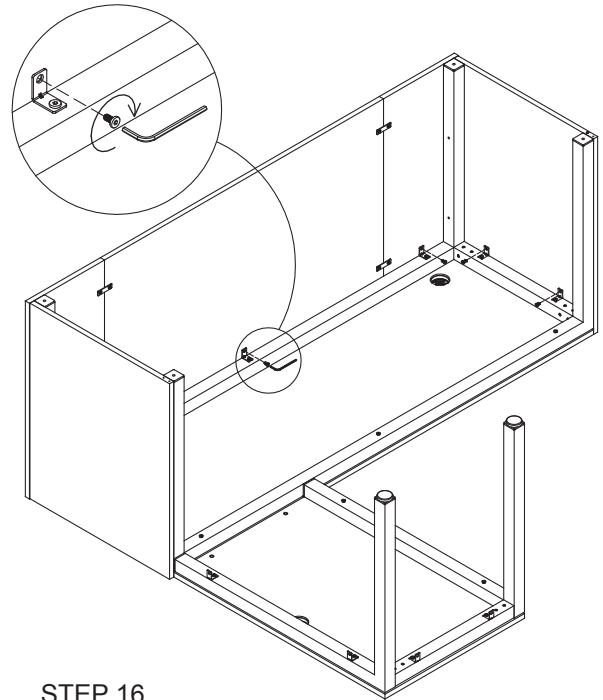
Congratulations on the purchase of your new *Signature Series* product!

INSTRUCTIONS

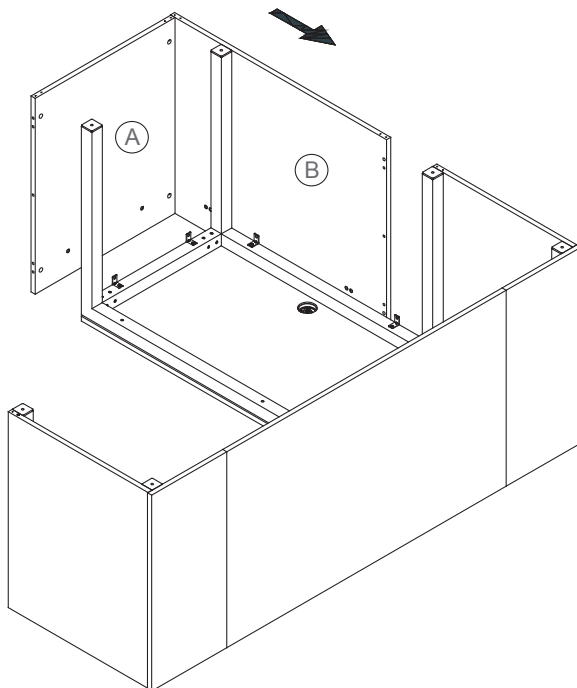
STEP 13



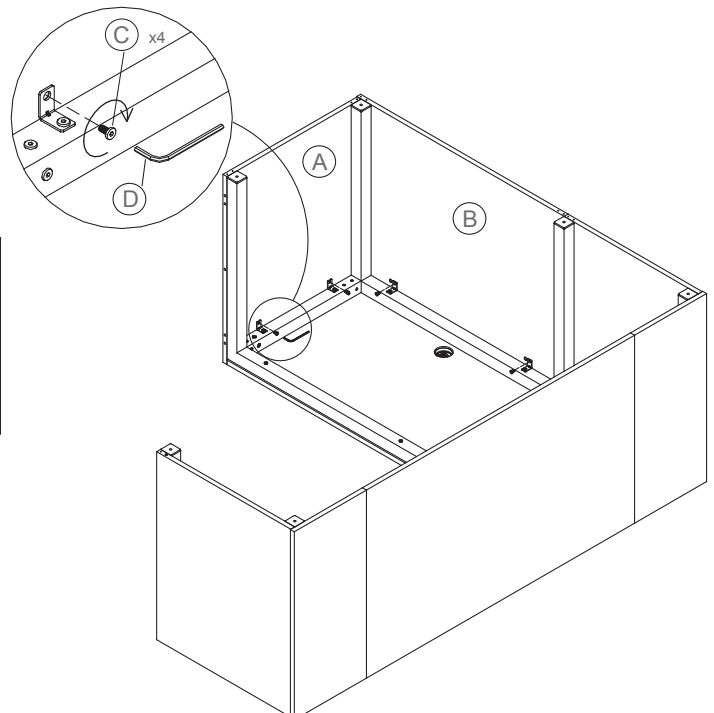
STEP 14



STEP 15



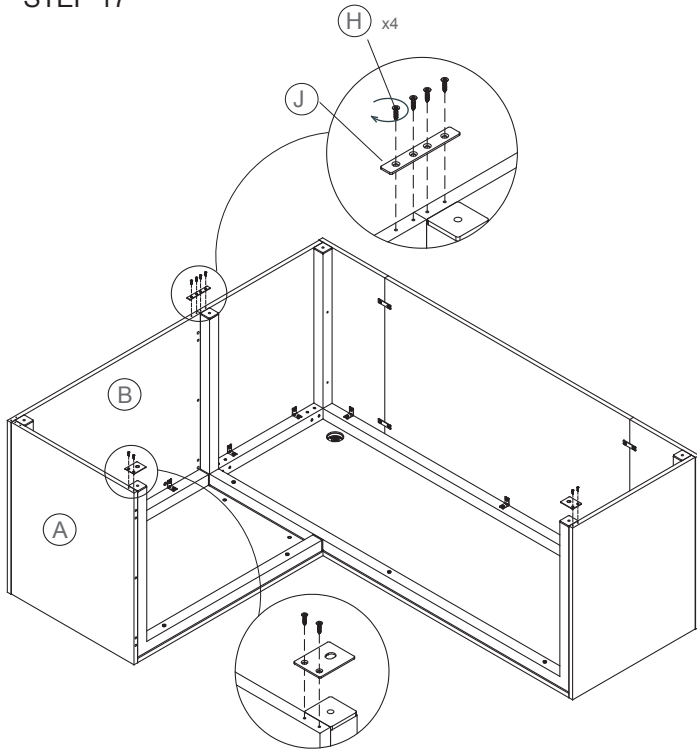
STEP 16



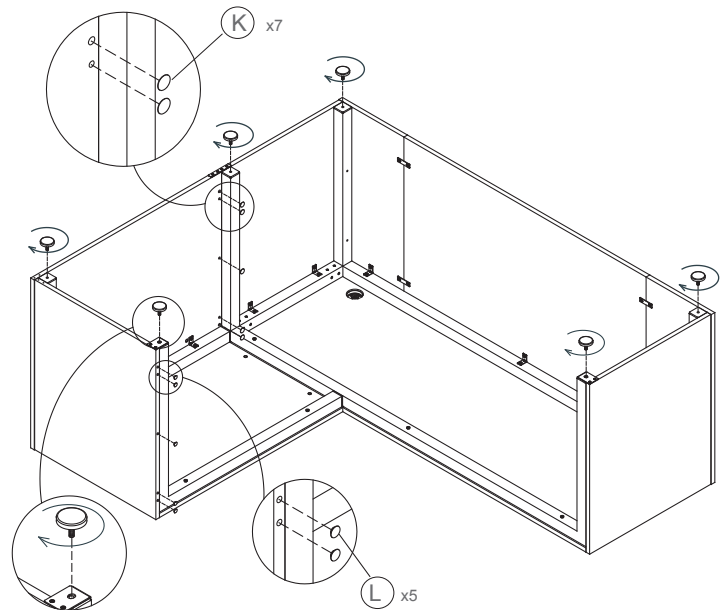
Congratulations on the purchase of your new *Signature Series* product!

INSTRUCTIONS

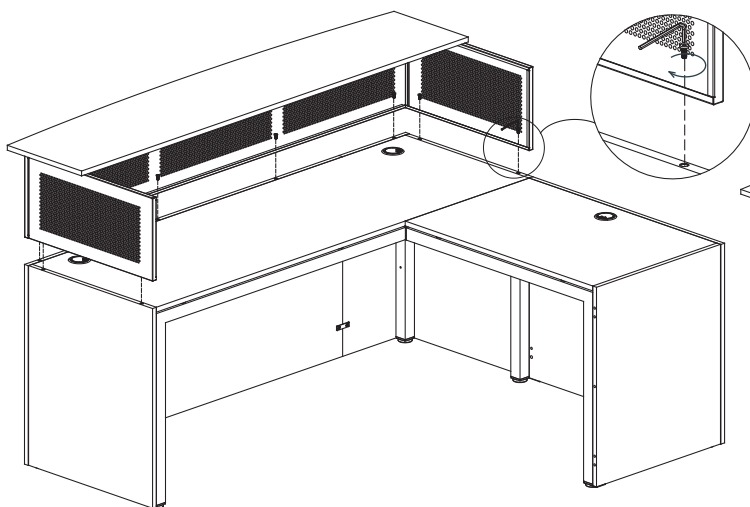
STEP 17



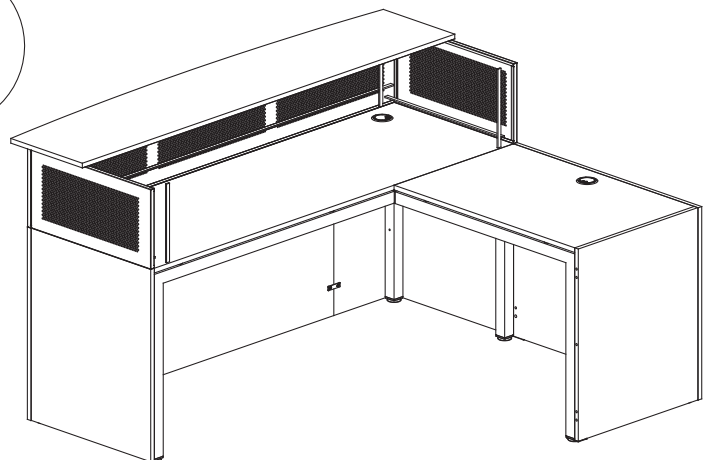
STEP 18



STEP 19



STEP 20



NOTE

Peel off the backing of the EVA strips and place the strip in the grooves of the panels.