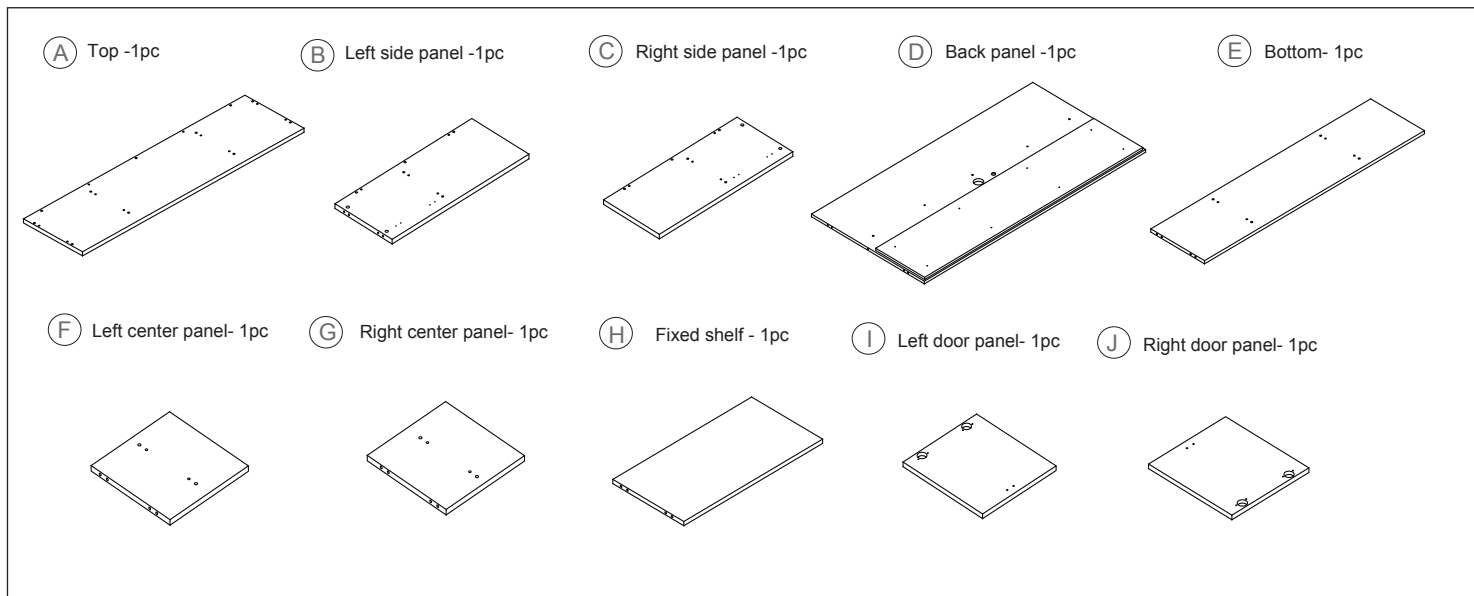
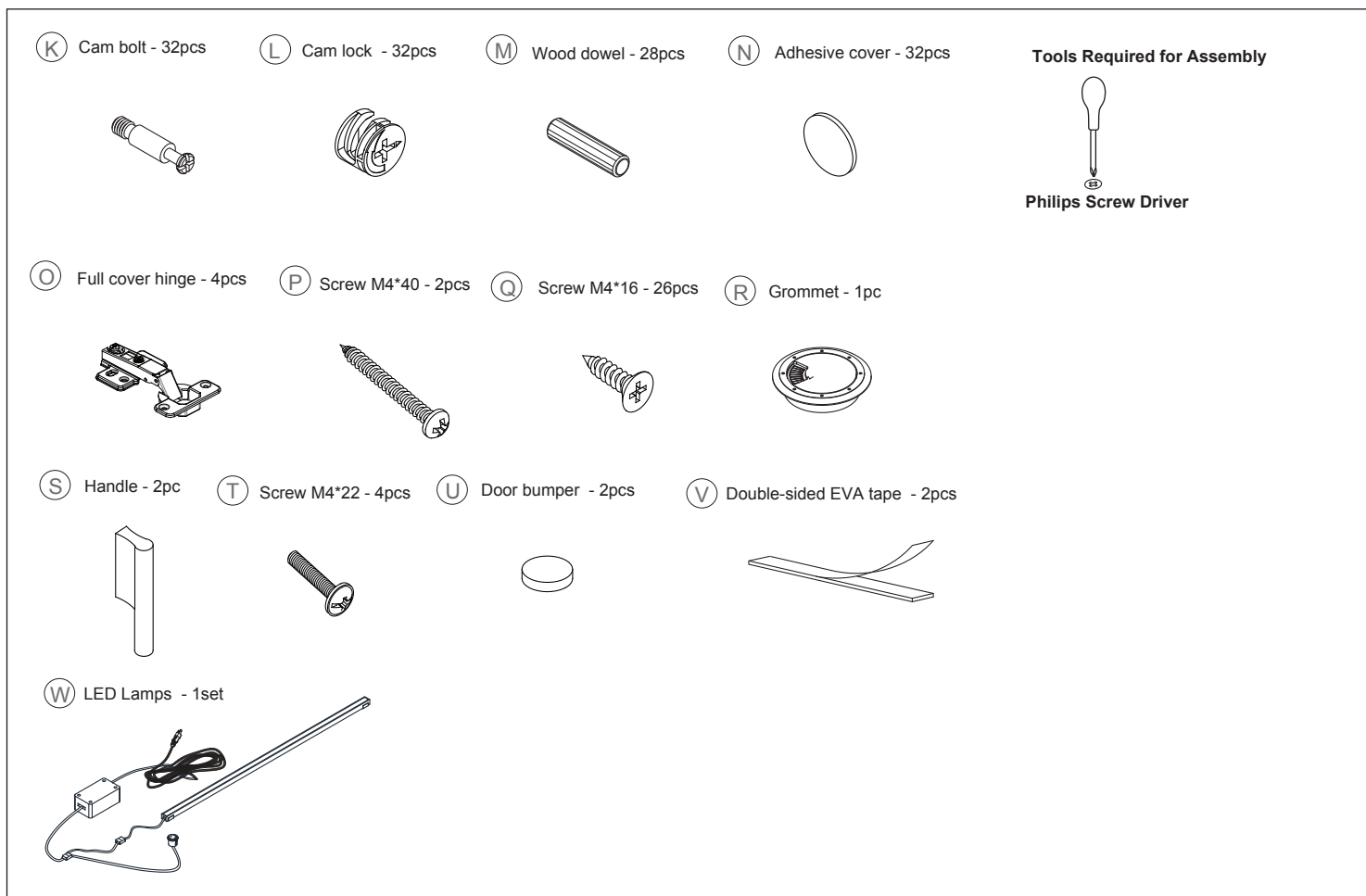


**Congratulations on the purchase of your new *Signature Series* product!**

## COMPONENTS



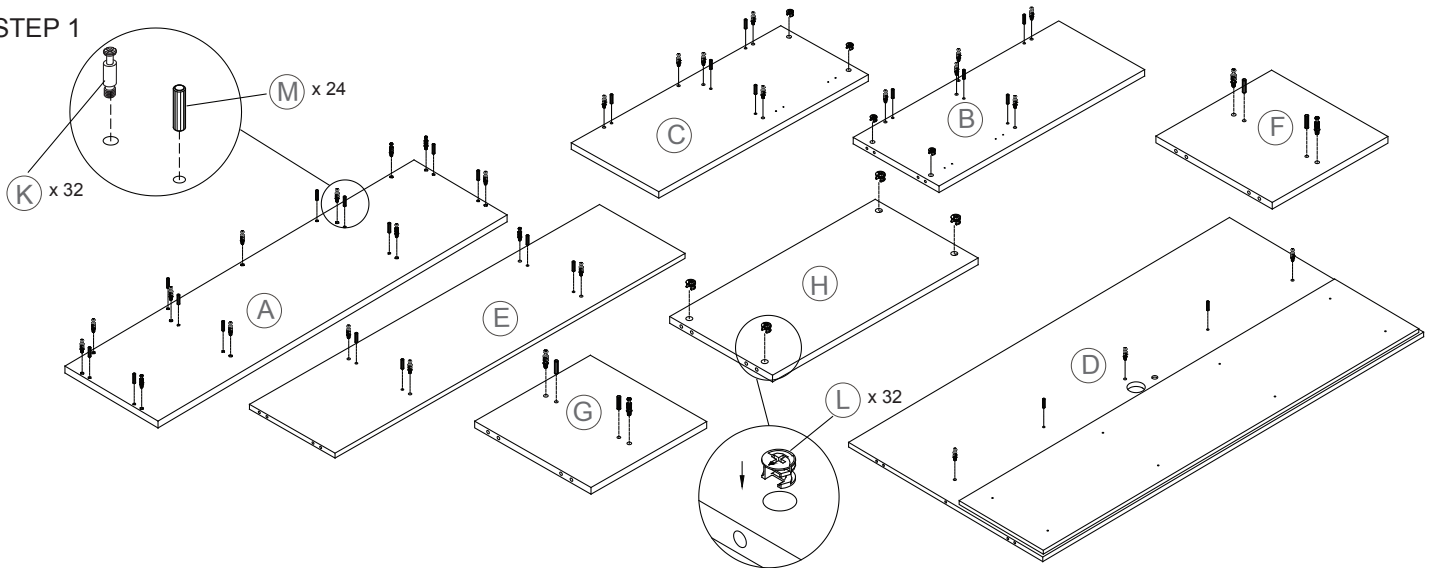
## HARDWARE & TOOLS



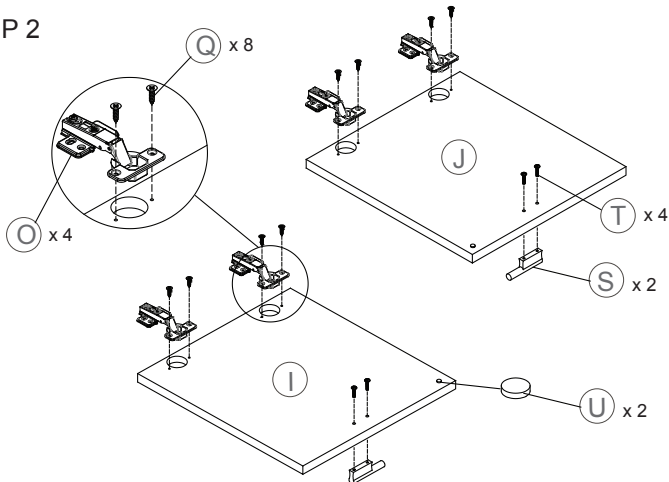
**Congratulations on the purchase of your new *Signature Series* product!**

## INSTRUCTIONS

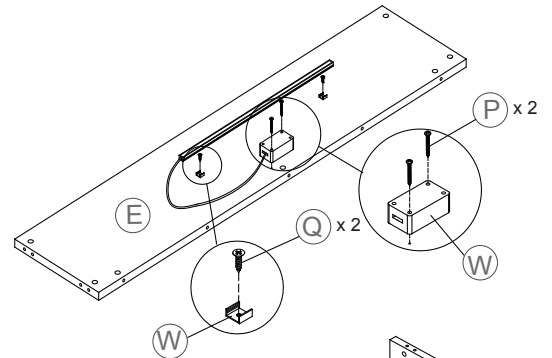
### STEP 1



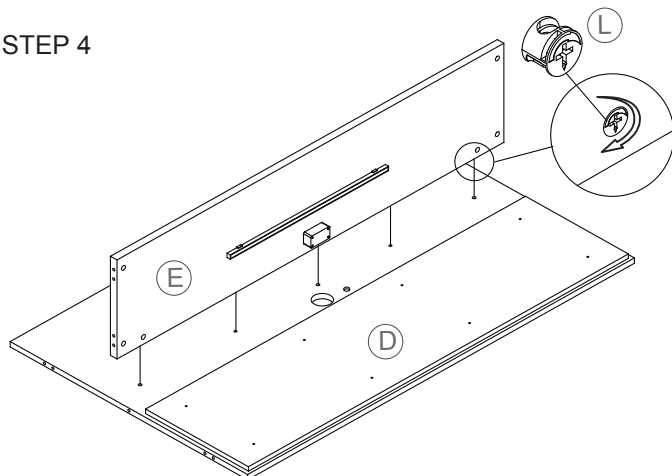
### STEP 2



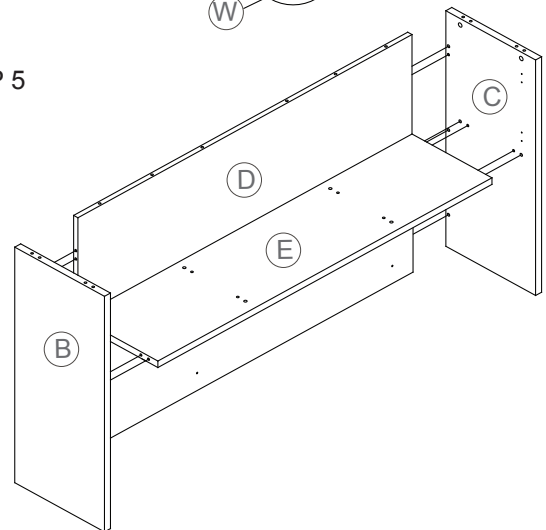
### STEP 3



### STEP 4



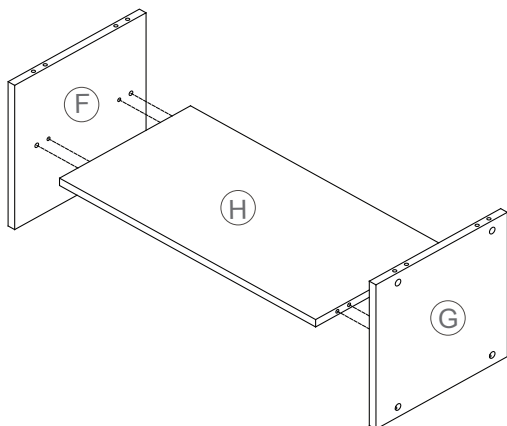
### STEP 5



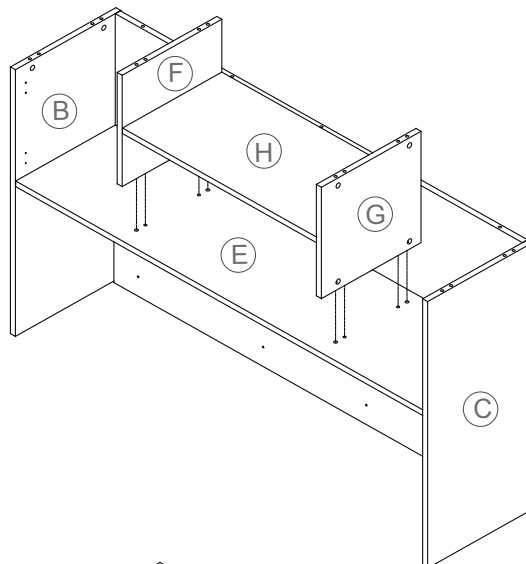
**Congratulations on the purchase of your new *Signature Series* product!**

## INSTRUCTIONS

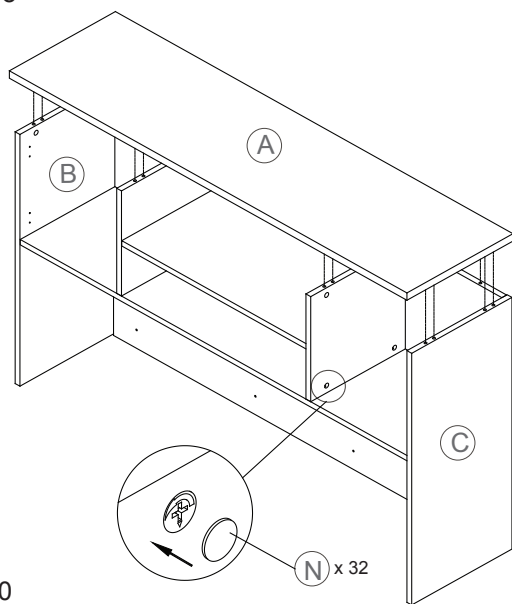
### STEP 6



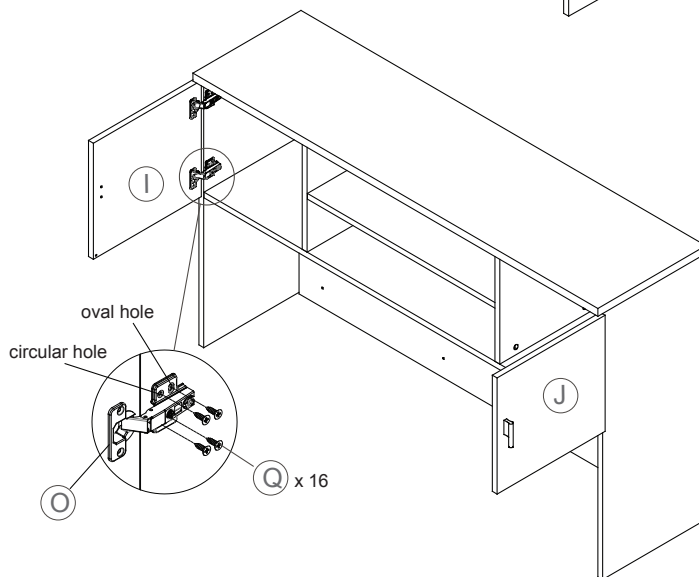
### STEP 7



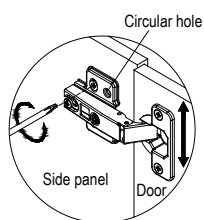
### STEP 8



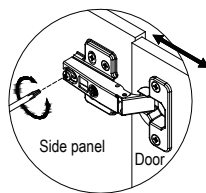
### STEP 9



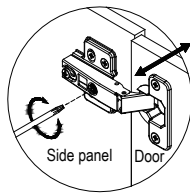
### STEP 10



ADJUSTMENT HEIGHT



ADJUSTMENT DEPTH



ADJUSTMENT GAP

Once height adjustment is complete, insert screw **Q** into the circular hole to attach the hinge.

**Congratulations on the purchase of your new *Signature Series* product!**

## INSTRUCTIONS

### STEP 11

