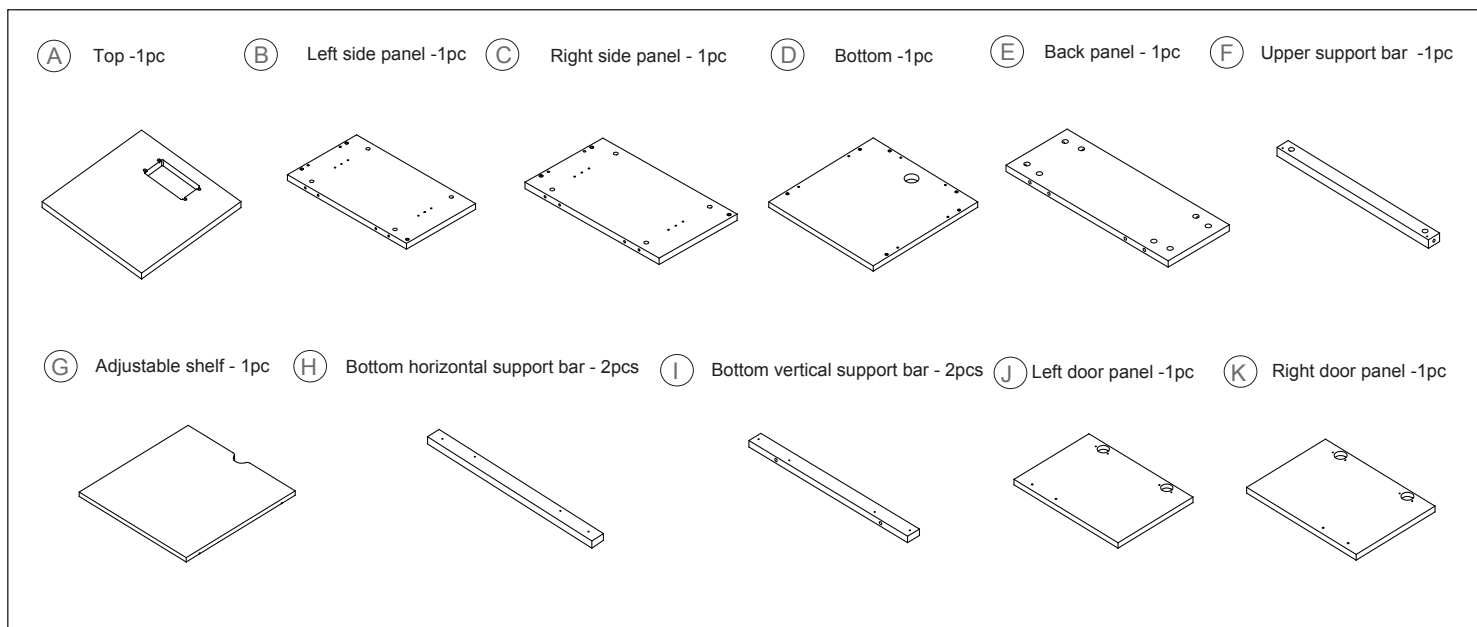
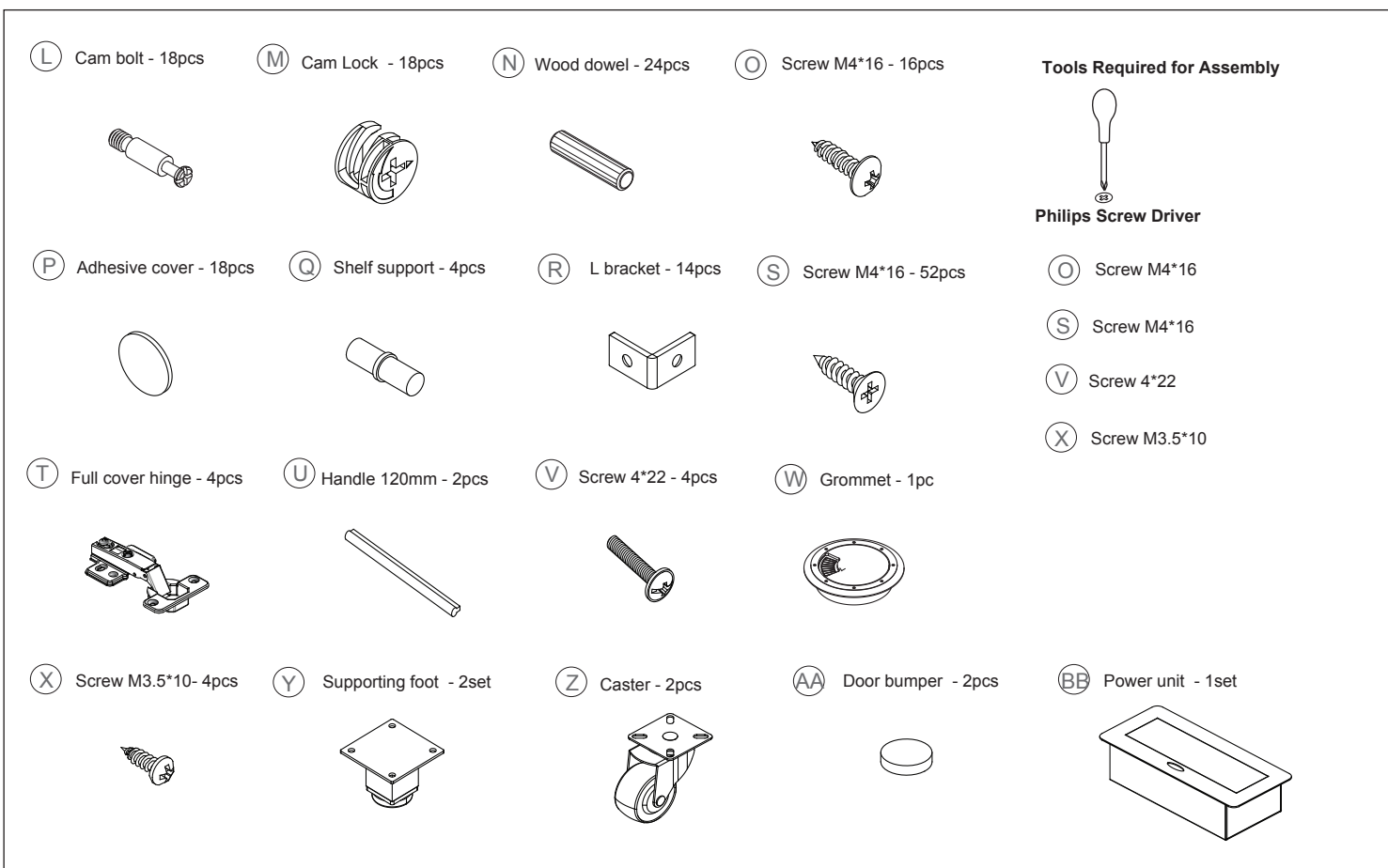


Congratulations on the purchase of your new *Signature Series* product!

COMPONENTS



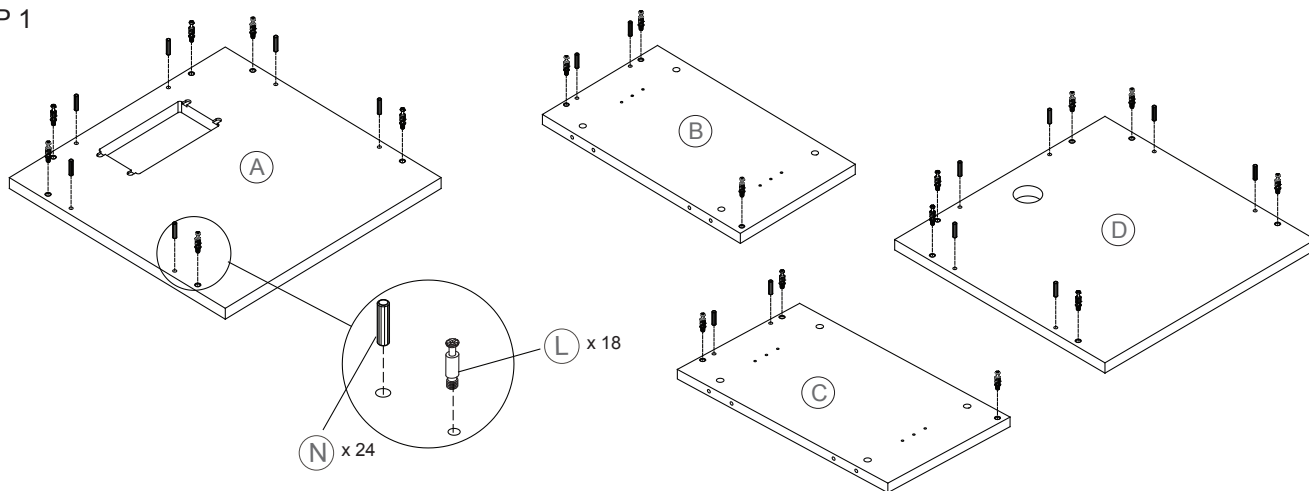
HARDWARE & TOOLS



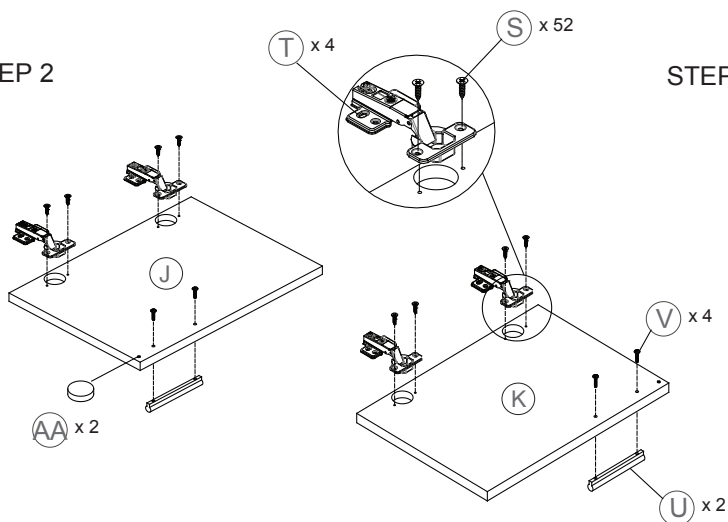
Congratulations on the purchase of your new *Signature Series* product!

INSTRUCTIONS

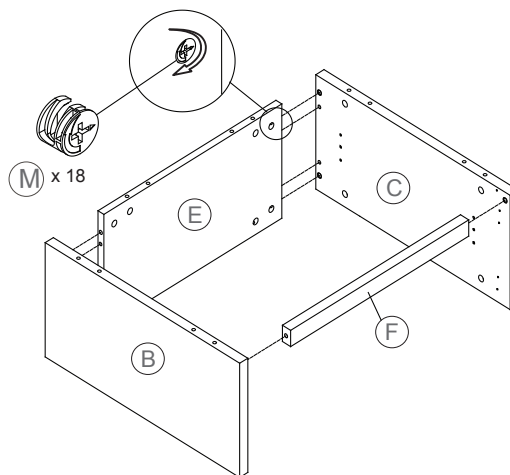
STEP 1



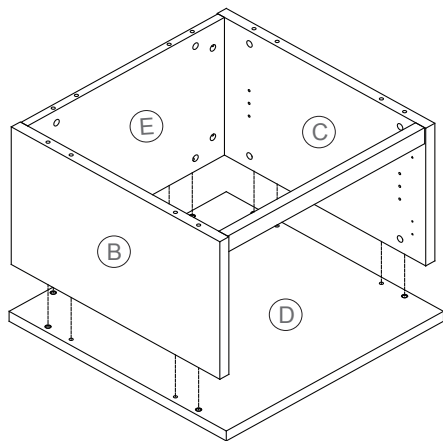
STEP 2



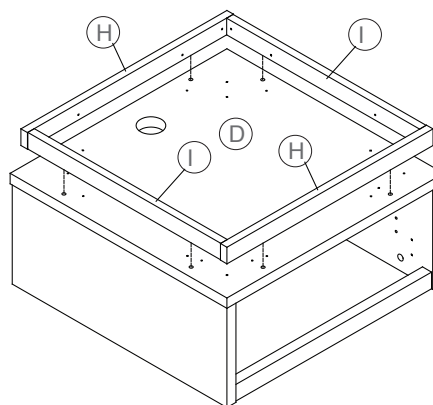
STEP 3



STEP 4



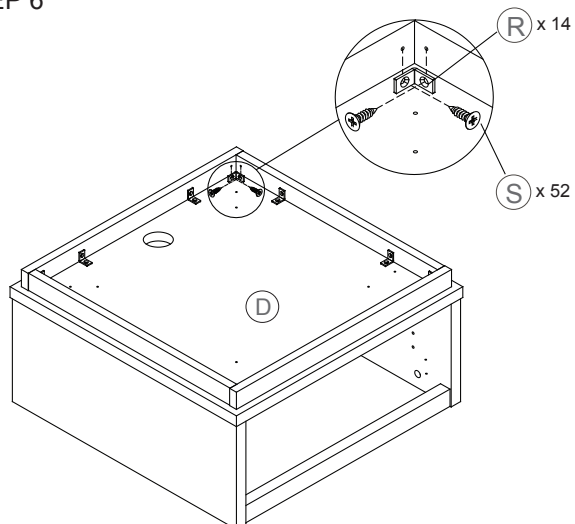
STEP 5



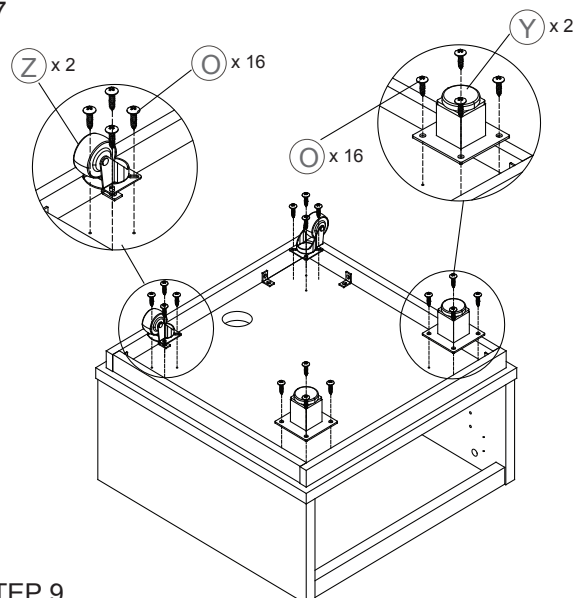
Congratulations on the purchase of your new *Signature Series* product!

INSTRUCTIONS

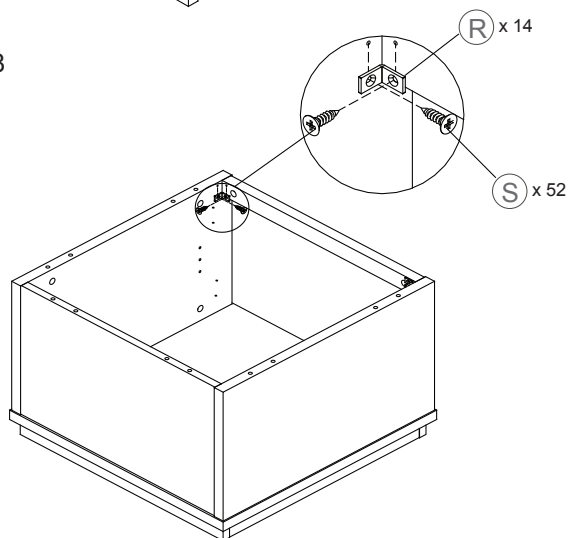
STEP 6



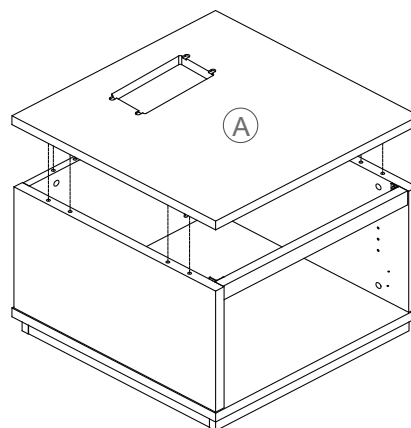
STEP 7



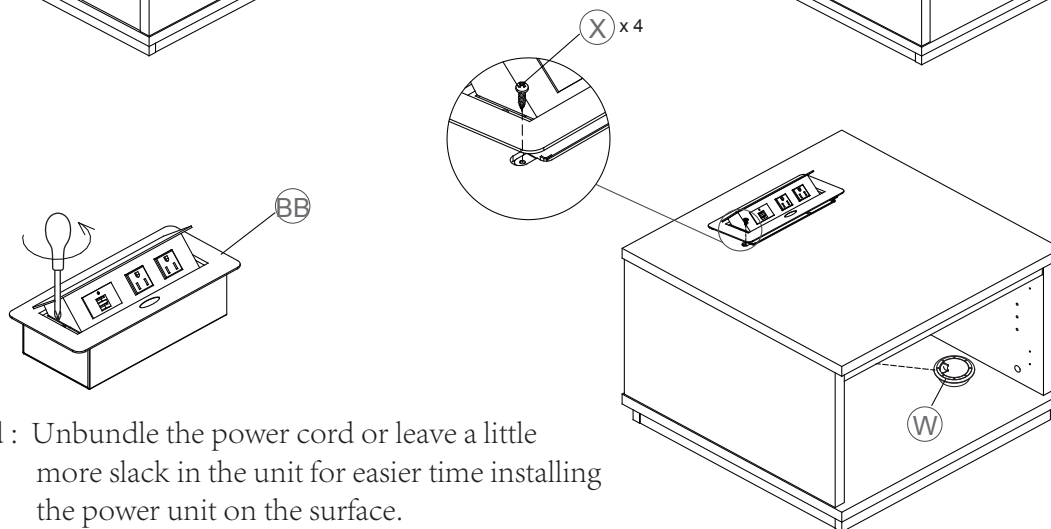
STEP 8



STEP 9



STEP 10

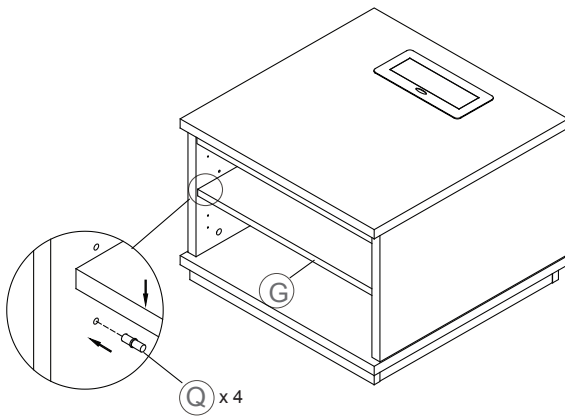


Noted : Unbundle the power cord or leave a little more slack in the unit for easier time installing the power unit on the surface.

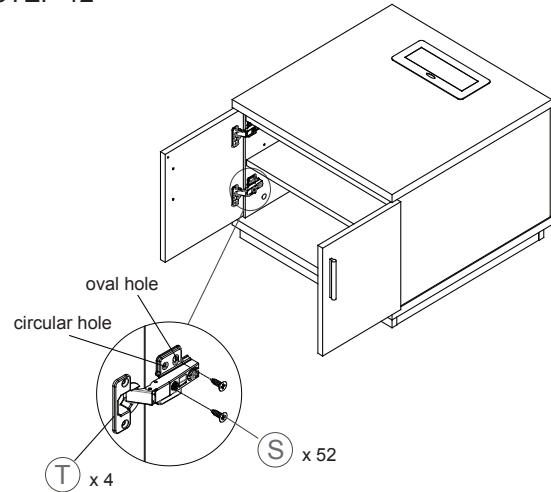
Congratulations on the purchase of your new *Signature Series* product!

INSTRUCTIONS

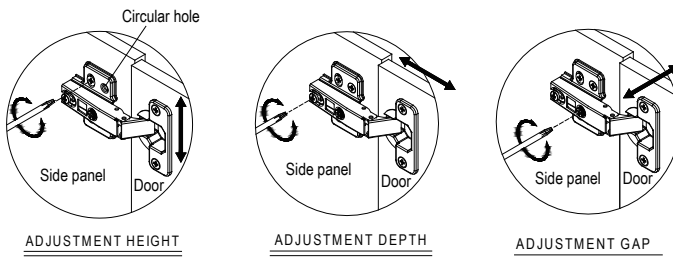
STEP 11



STEP 12



STEP 13



Once height adjustment is complete, insert screw (S) into the circular hole to attach the hinge.

STEP 14

