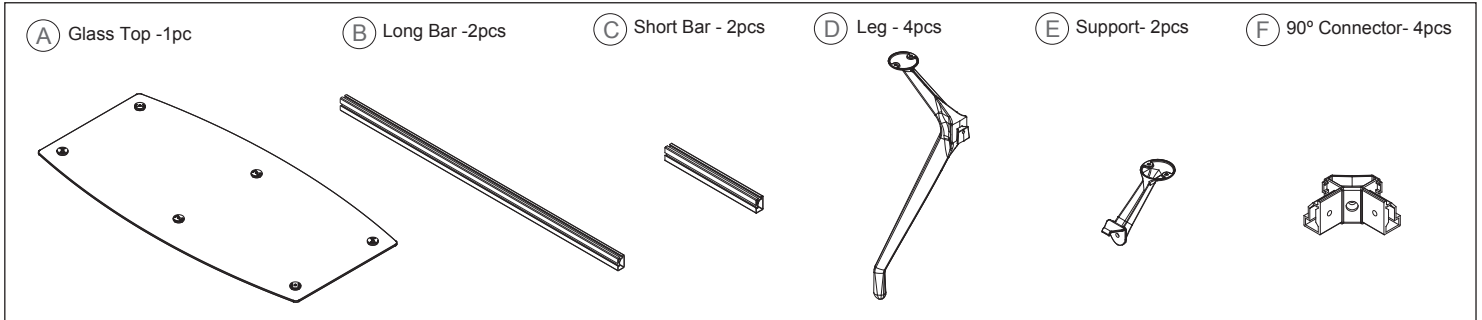


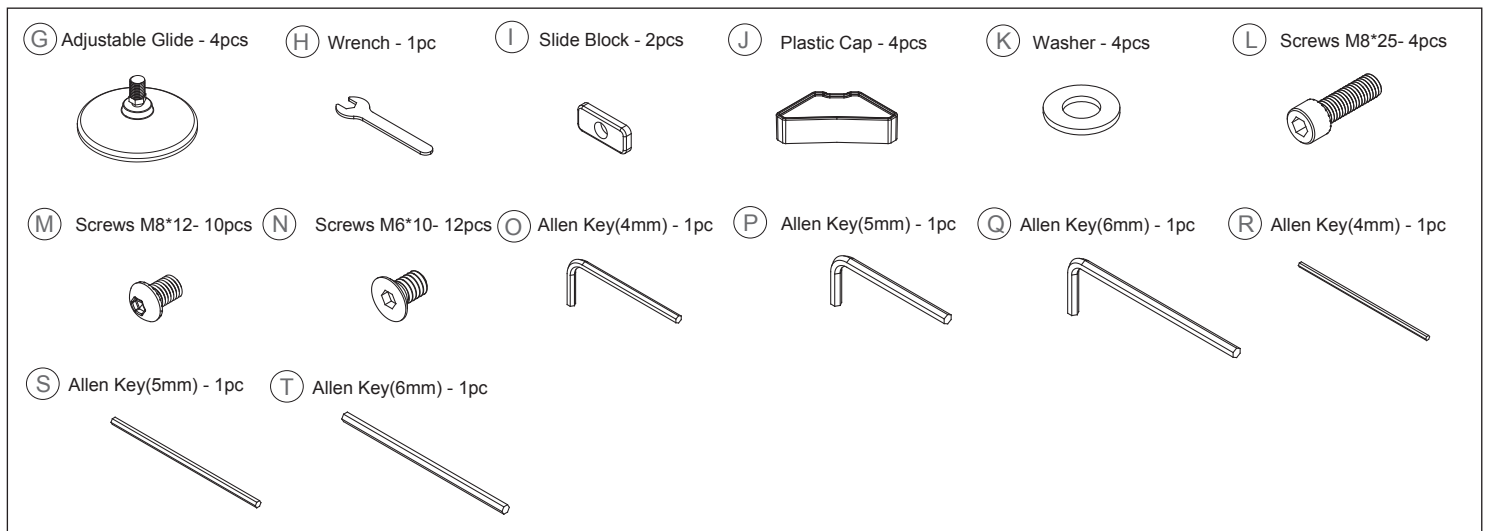
95"x47" Glass Top Frame/Legs for 95"Conference Table ASSEMBLY INSTRUCTIONS

Congratulations on the purchase of your new *Signature Series* product!

COMPONENTS

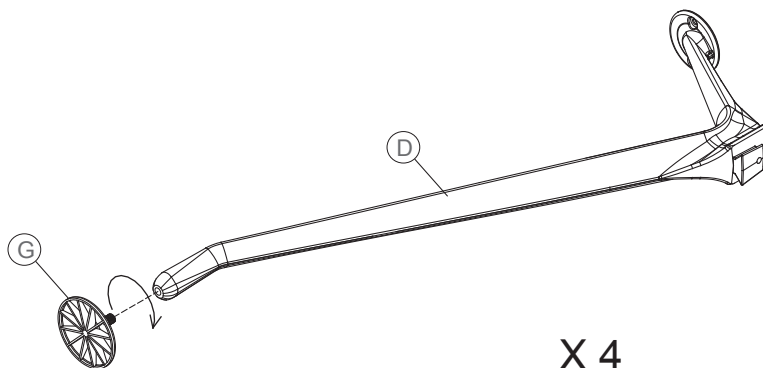


HARDWARE & TOOLS

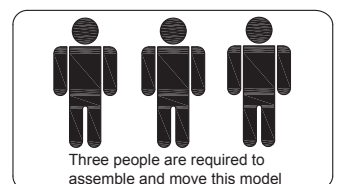


INSTRUCTIONS

STEP 1



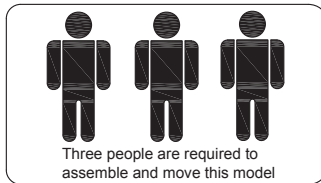
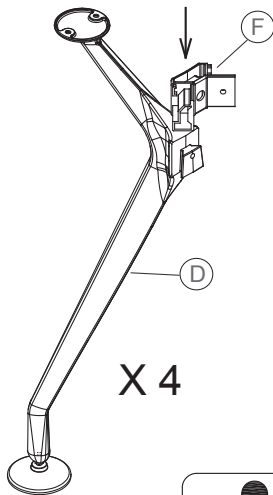
X 4



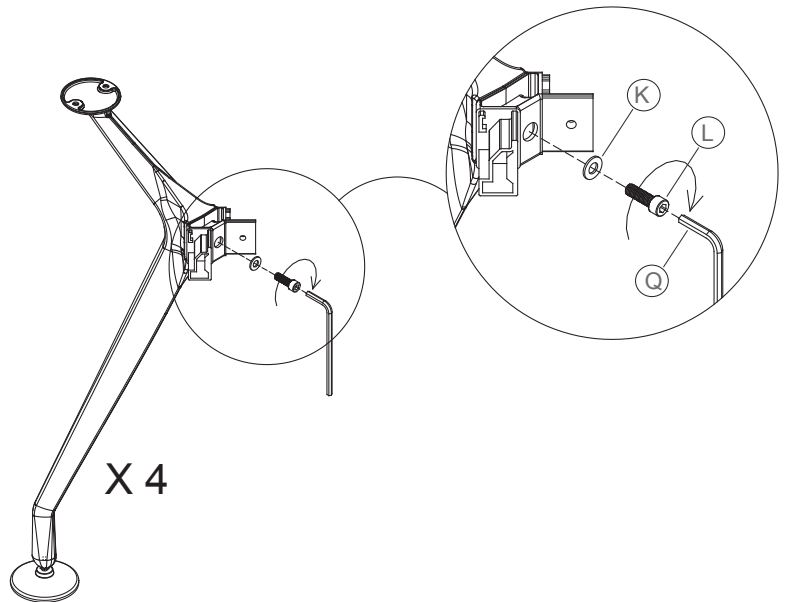
Congratulations on the purchase of your new *Signature Series* product!

INSTRUCTIONS

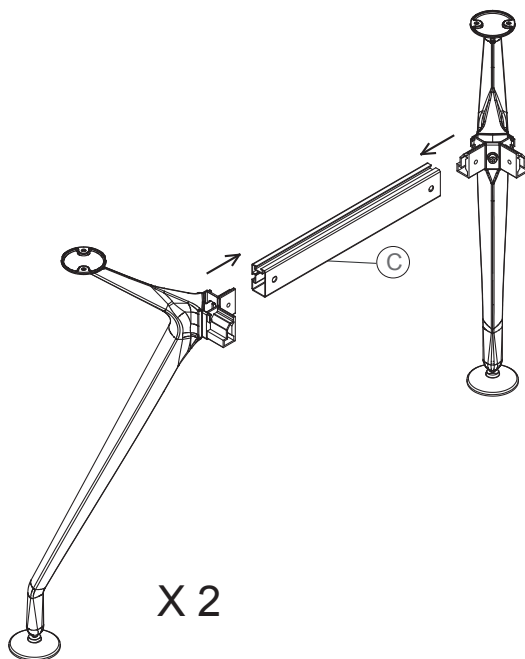
STEP 2



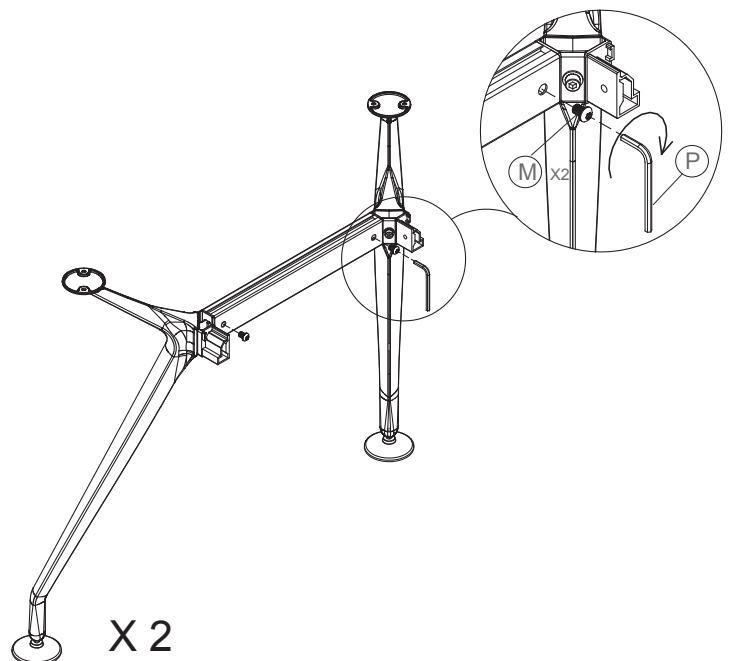
STEP 3



STEP 4



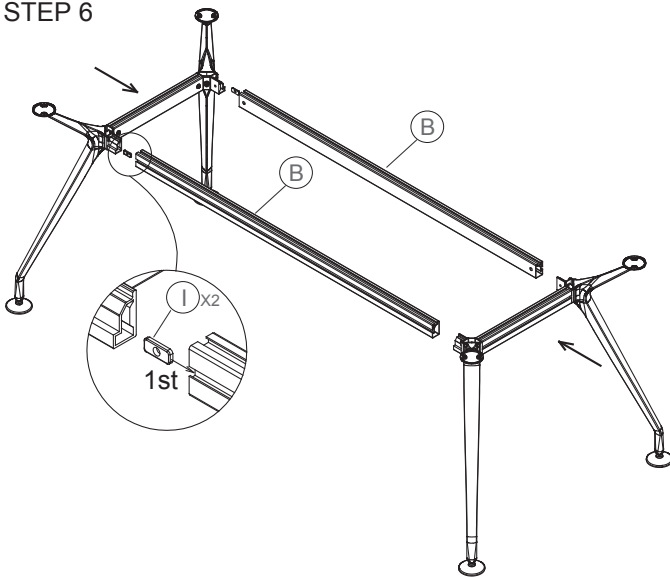
STEP 5



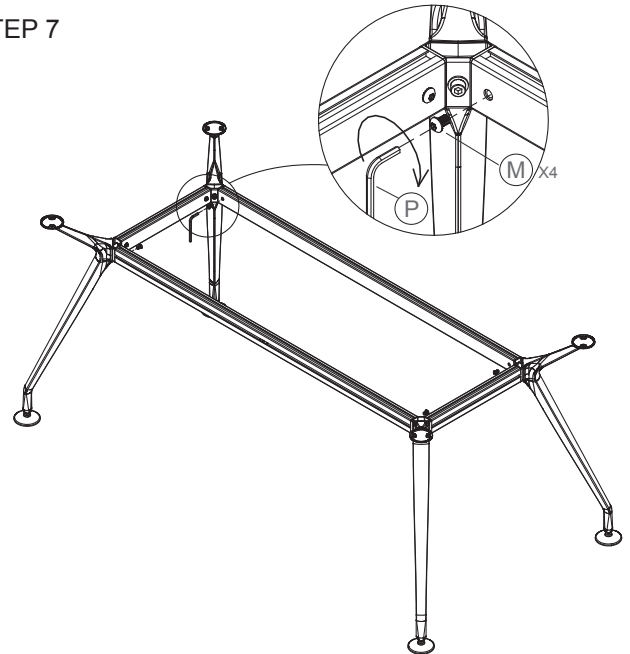
Congratulations on the purchase of your new *Signature Series* product!

INSTRUCTIONS

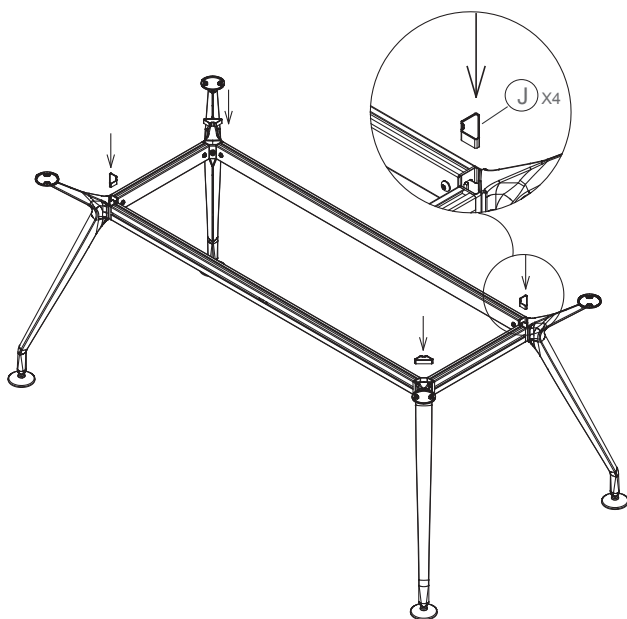
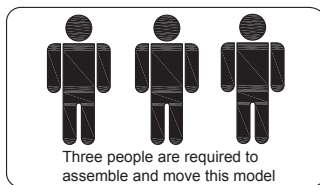
STEP 6



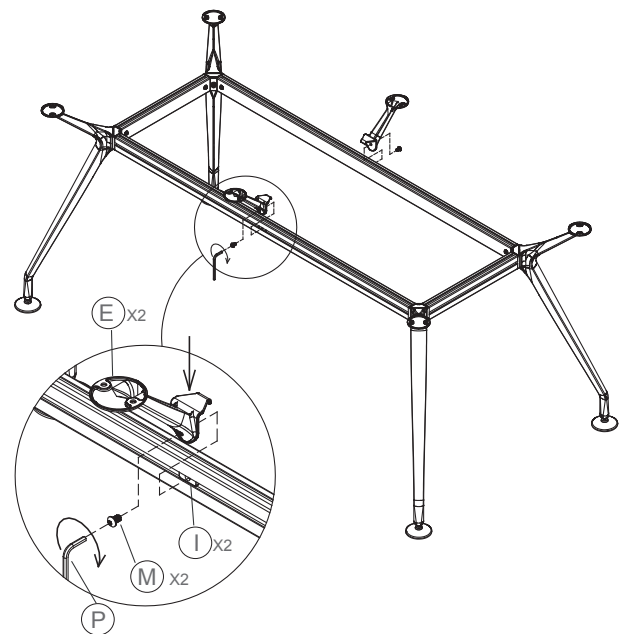
STEP 7



STEP 8



STEP 9

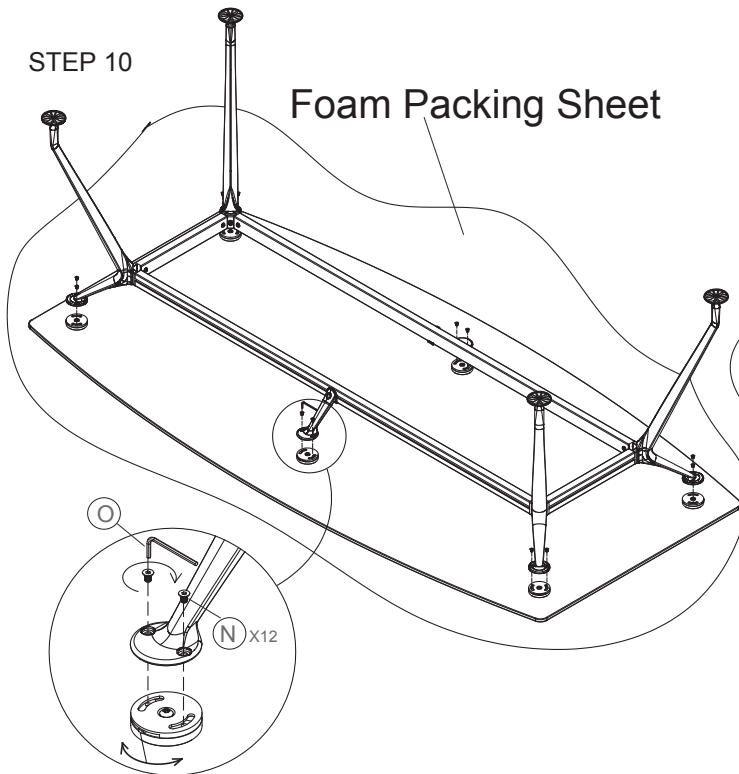


Do not tighten

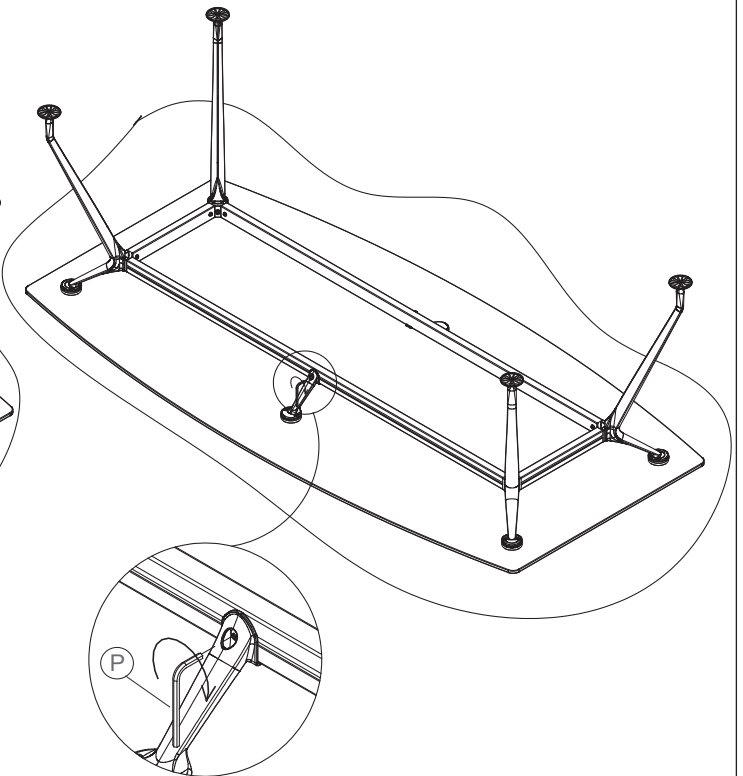
Congratulations on the purchase of your new *Signature Series* product!

INSTRUCTIONS

STEP 10

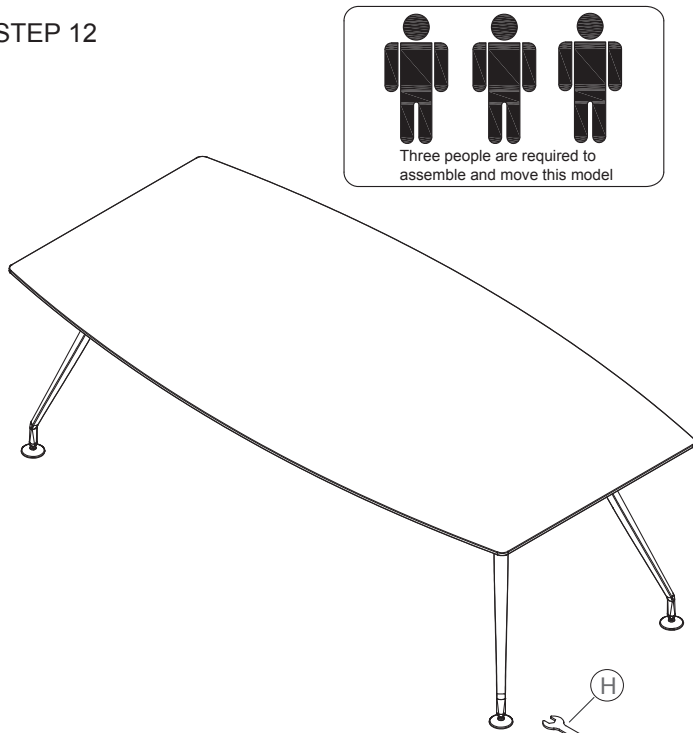


STEP 11



Tighten the screws

STEP 12



Use H to adjust
the height

