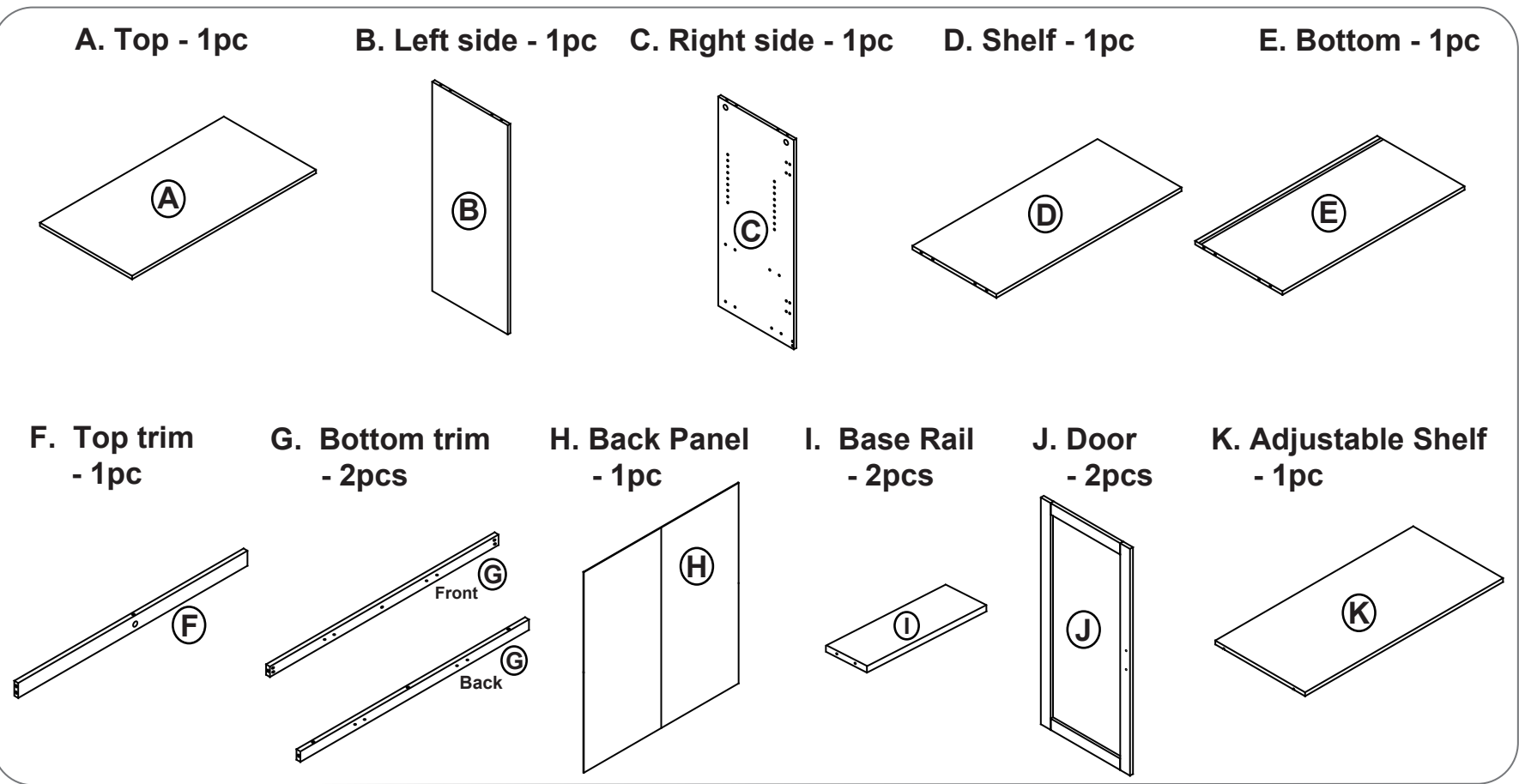


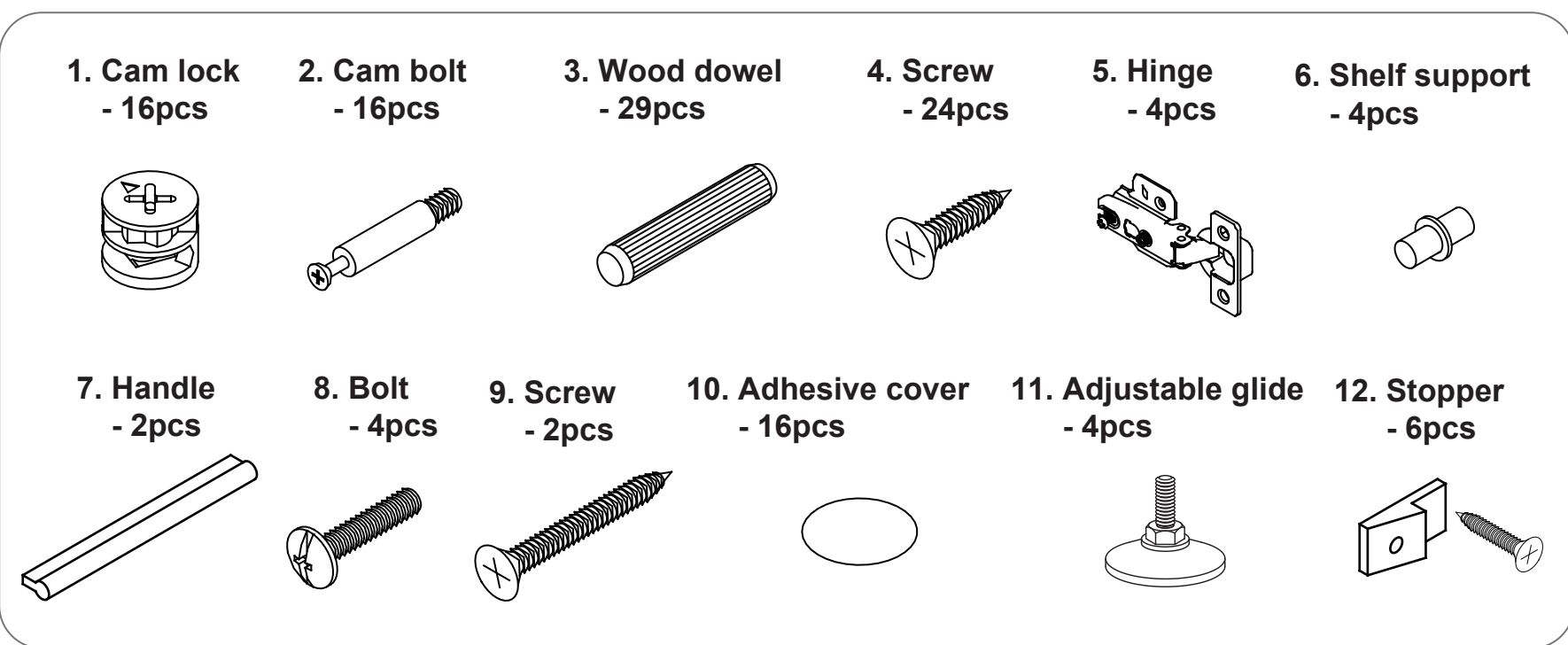
ATWORK Wall storage cabinet

with frosted glass doors Model# AW-50168N

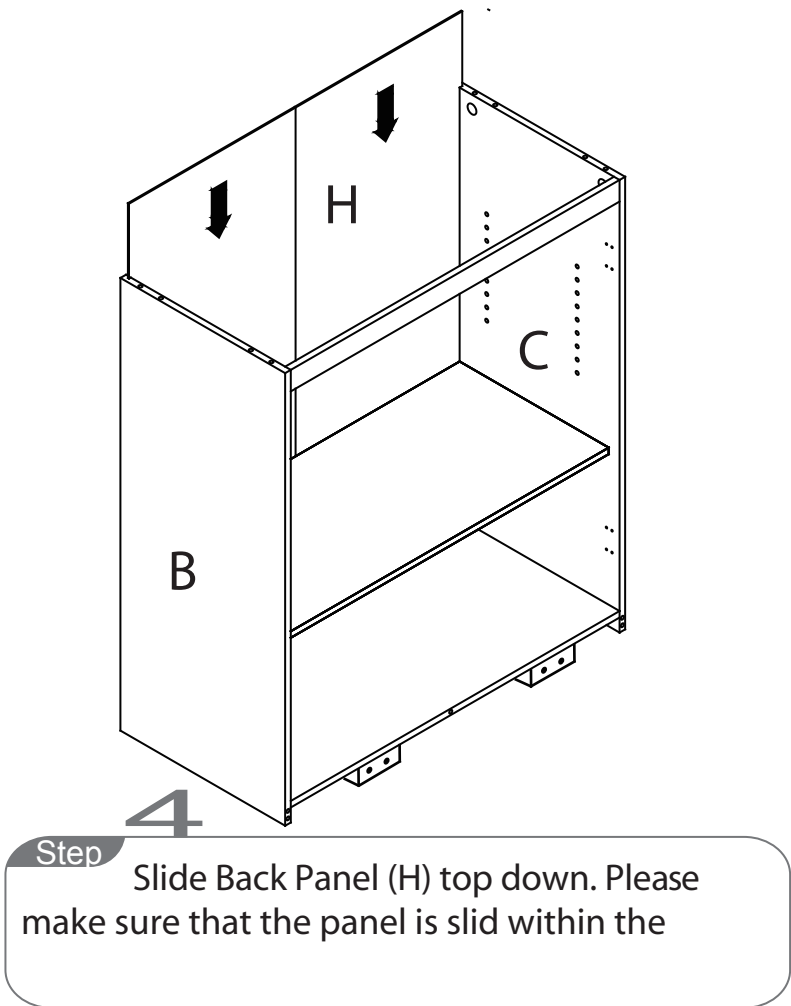
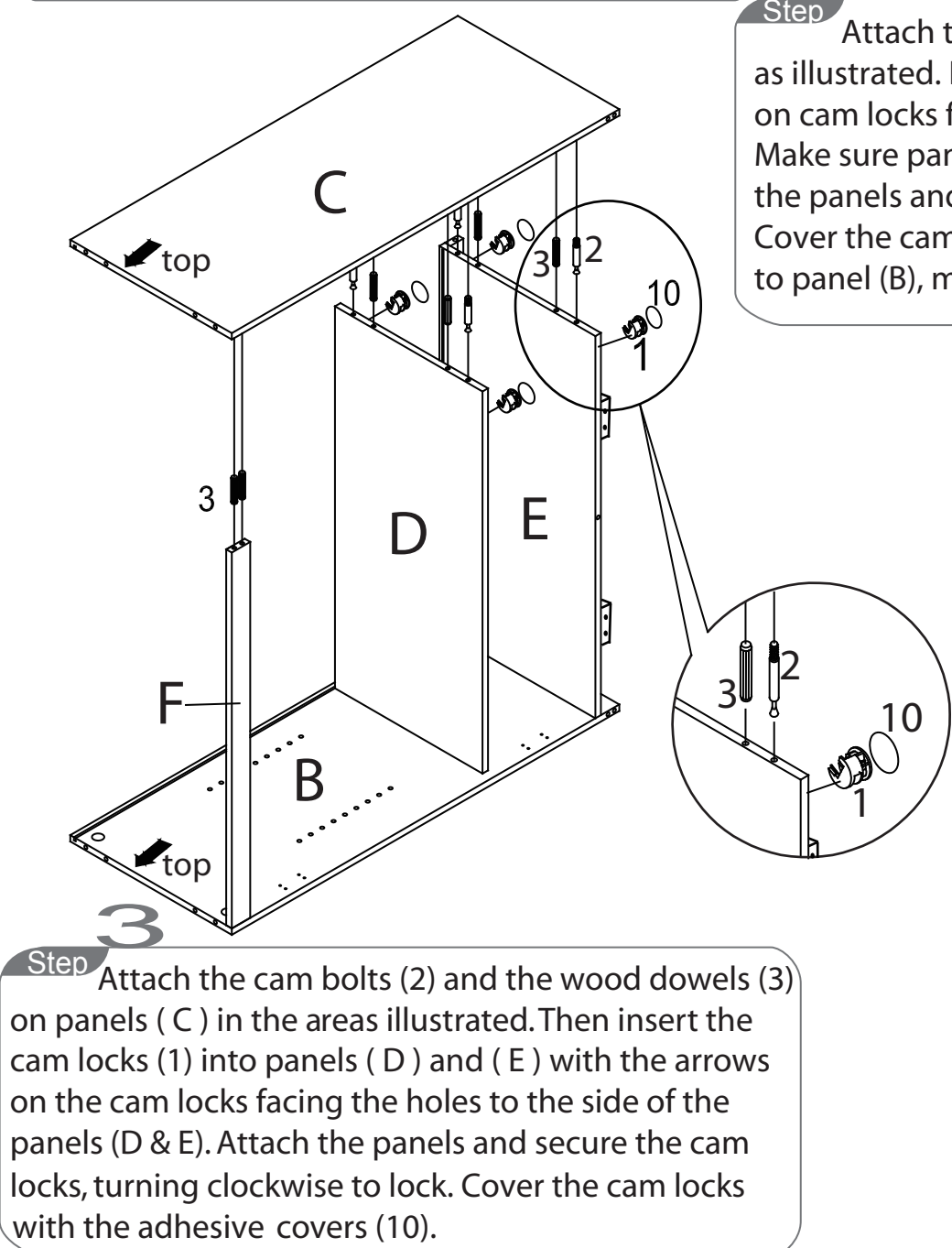
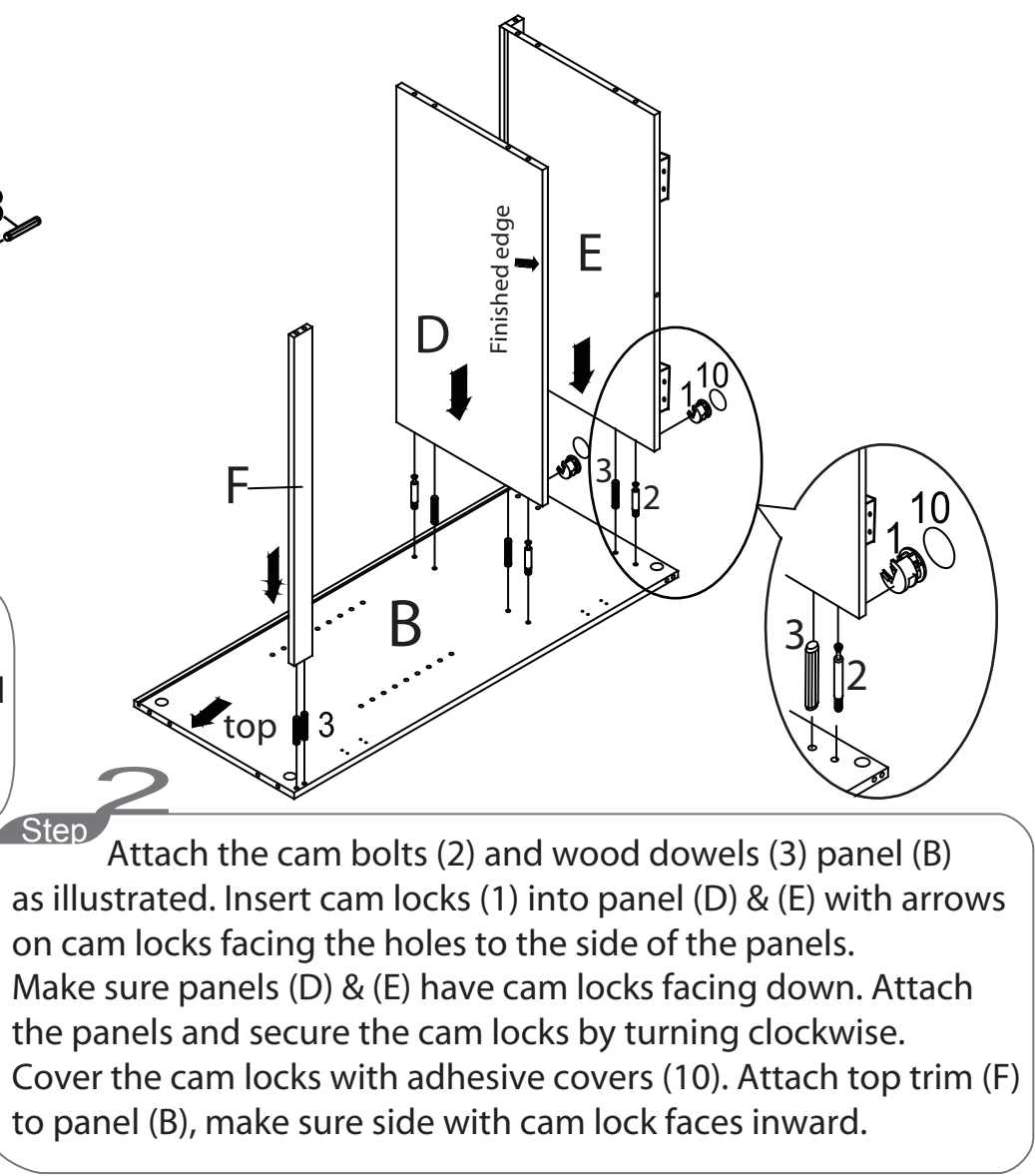
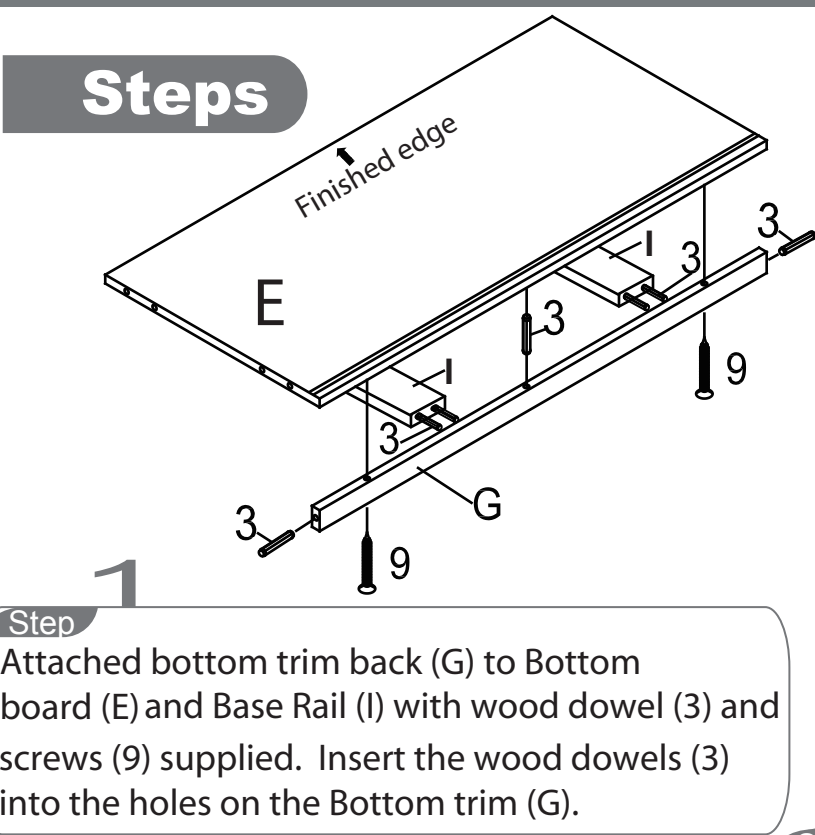
Identify all the components



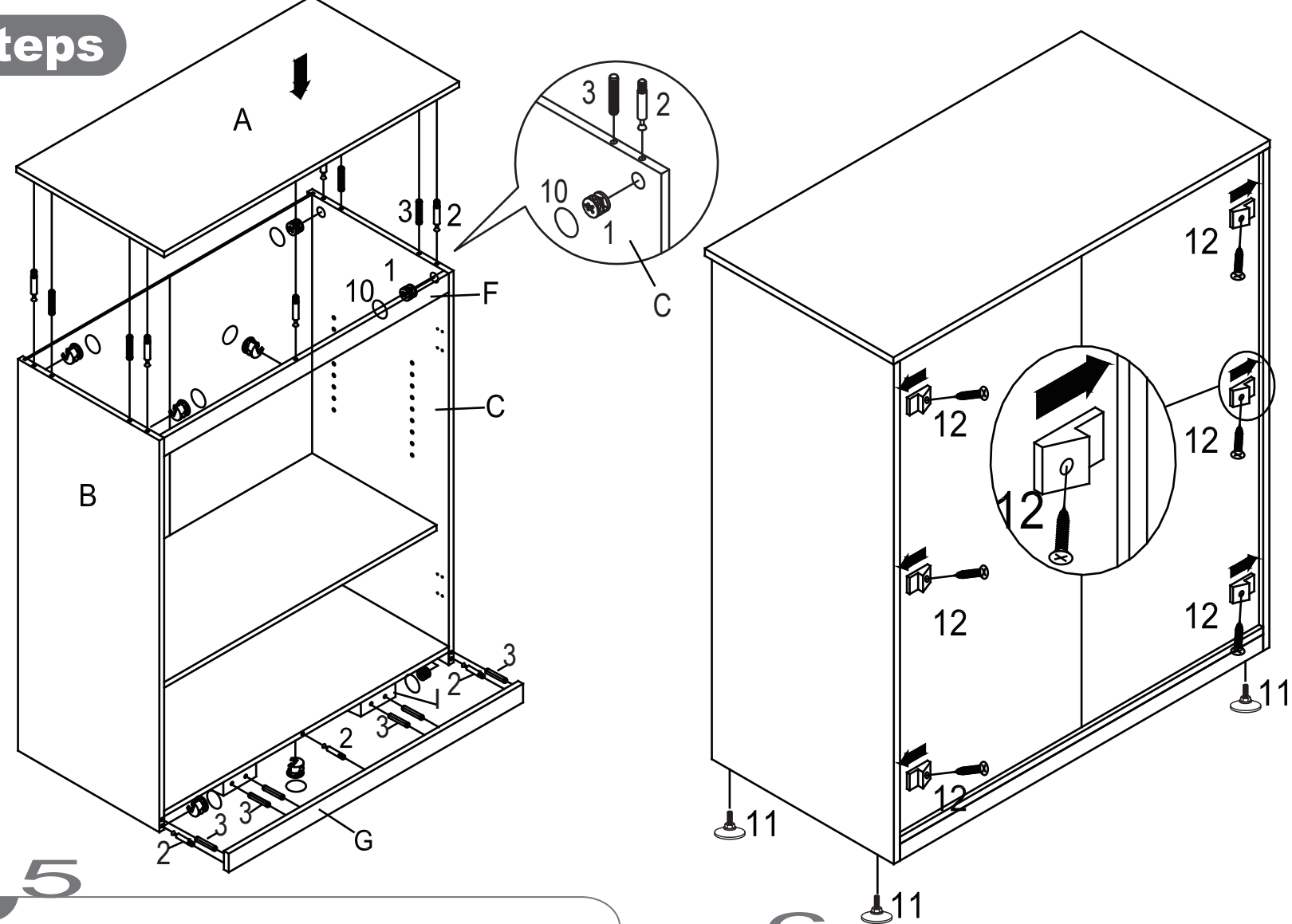
Hardware identification



Steps

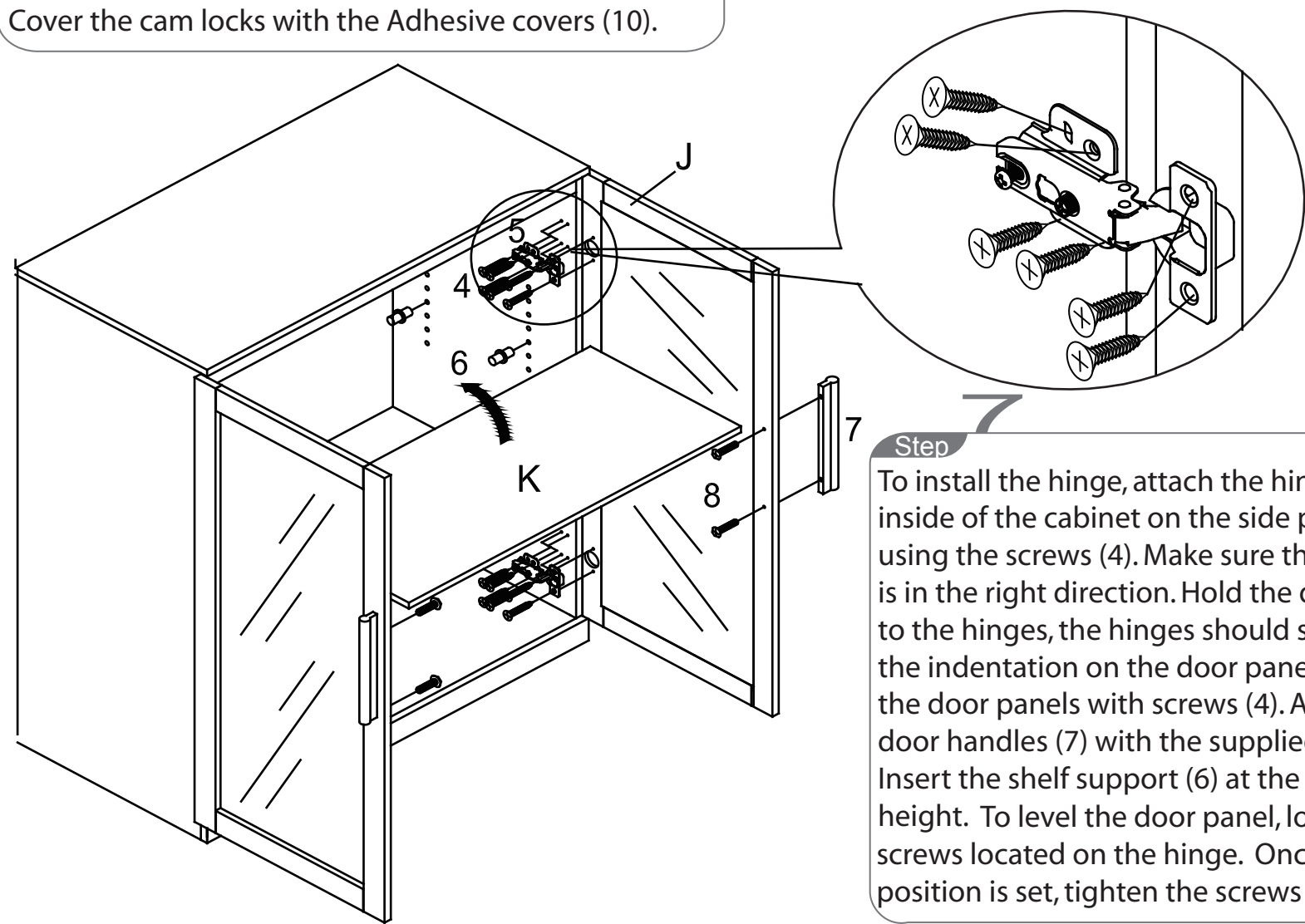


Steps



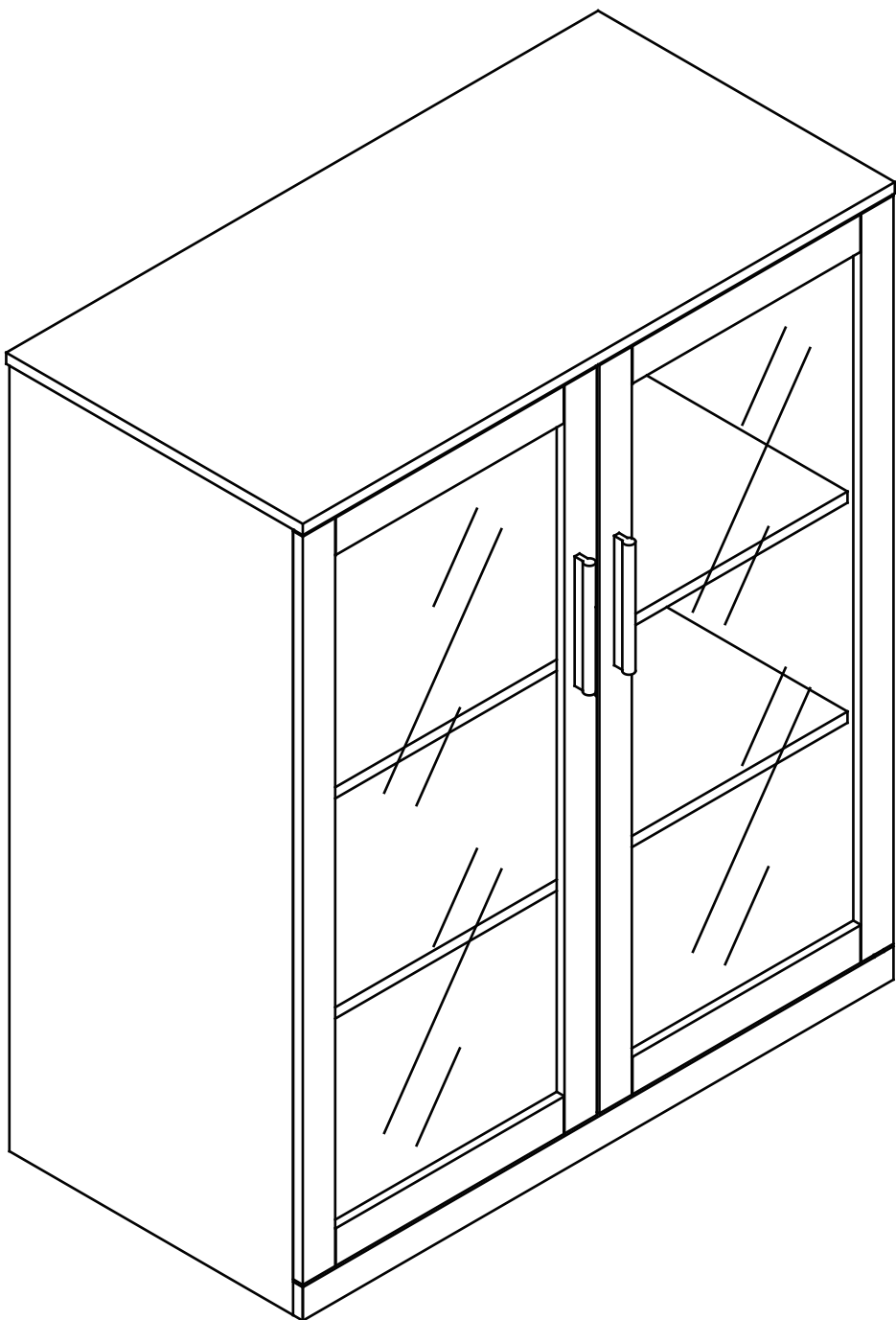
Step 5
Attach the cam bolts (2) and the wood dowels (3) on panels (A) and (G) & (I) in the areas illustrated. Then insert the cam locks (1) into panels (B) and (C) with the arrows on the cam lock facing the holes to the side of the panels. Attach the panels and secure the cam locks,turning clockwise to lock. Cover the cam locks with the Adhesive covers (10).

Step 6
To secure Back Panel (H),insert Stoppers (12) as illustrated.Insert screw supplied into the stopper and slowly tighten it. Attach adjustable glides (11) to the bottom of the cabinet.



Step 7
To install the hinge,attach the hinge to the inside of the cabinet on the side panels using the screws (4). Make sure the hinge is in the right direction.Hold the door up to the hinges,the hinges should slot into the indentation on the door panels. Secure the door panels with screws (4). Attach the door handles (7) with the supplied bolts (8). Insert the shelf support (6) at the desired height. To level the door panel,loosen 2 screws located on the hinge. Once desired position is set,tighten the screws to secure.

ATWORK Wall storage cabinet w/ frosted glass doors



Model# AW-50168N

Assembly
Instruction