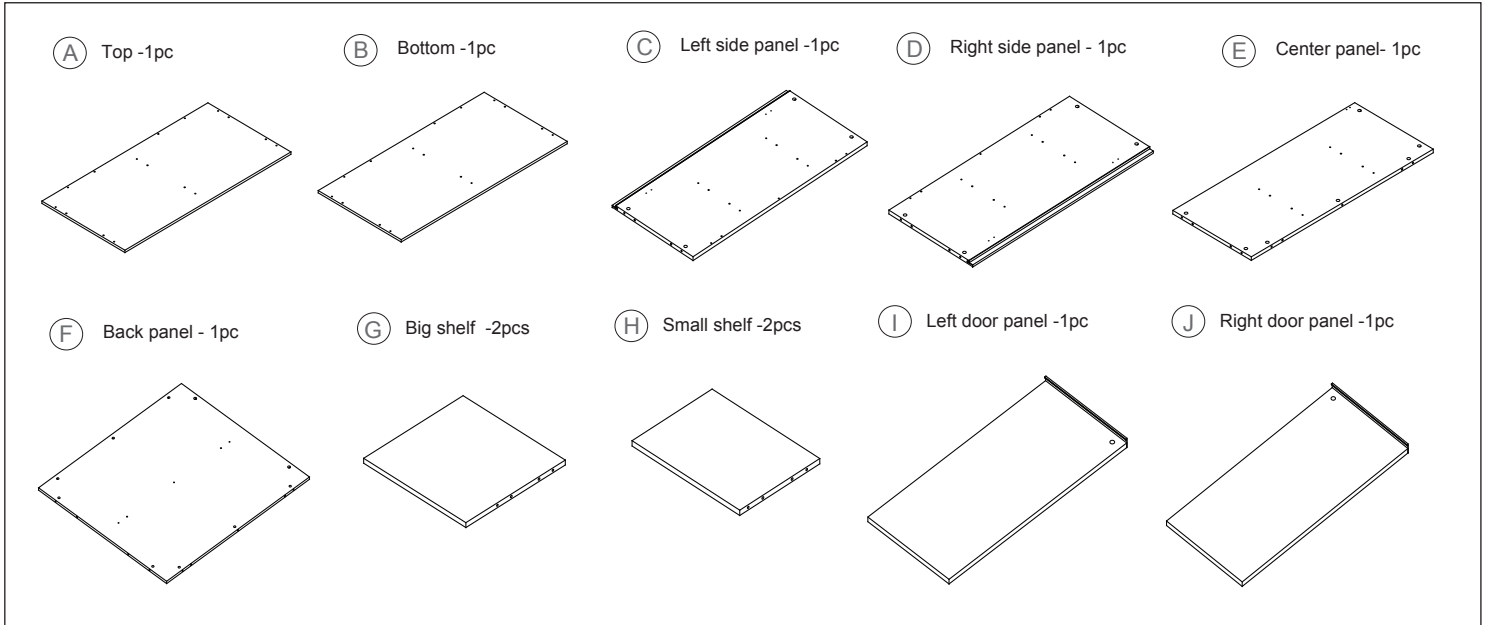
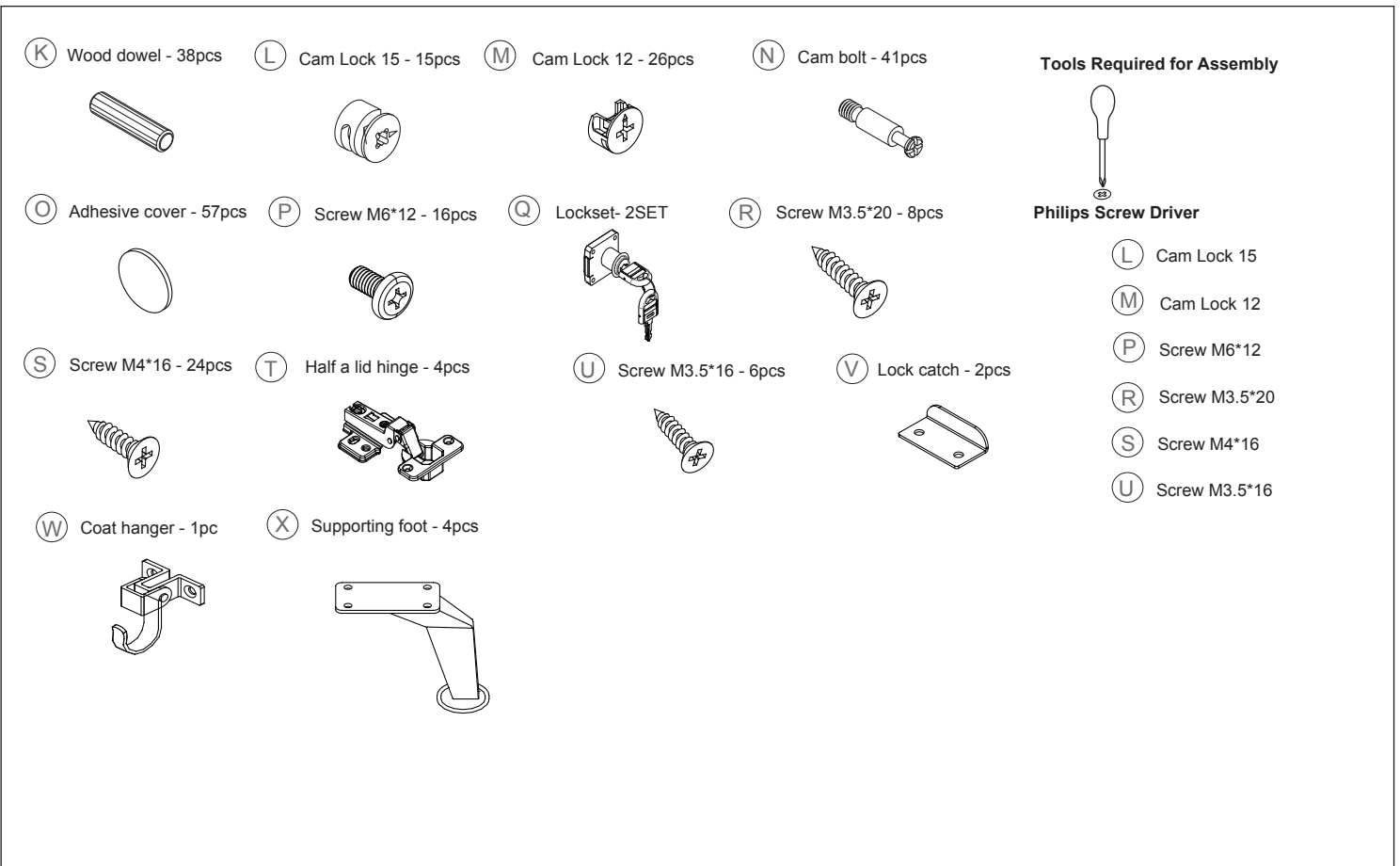


Congratulations on the purchase of your new *Signature Series* product!

COMPONENTS



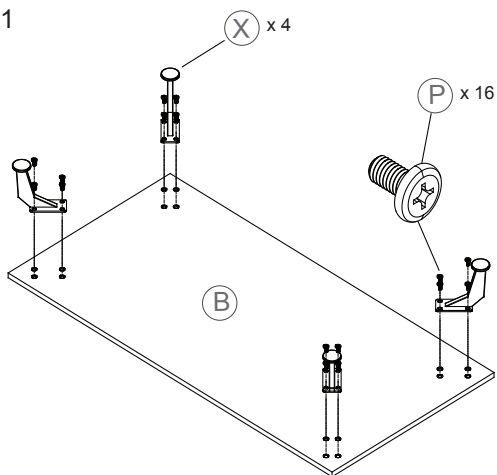
HARDWARE & TOOLS



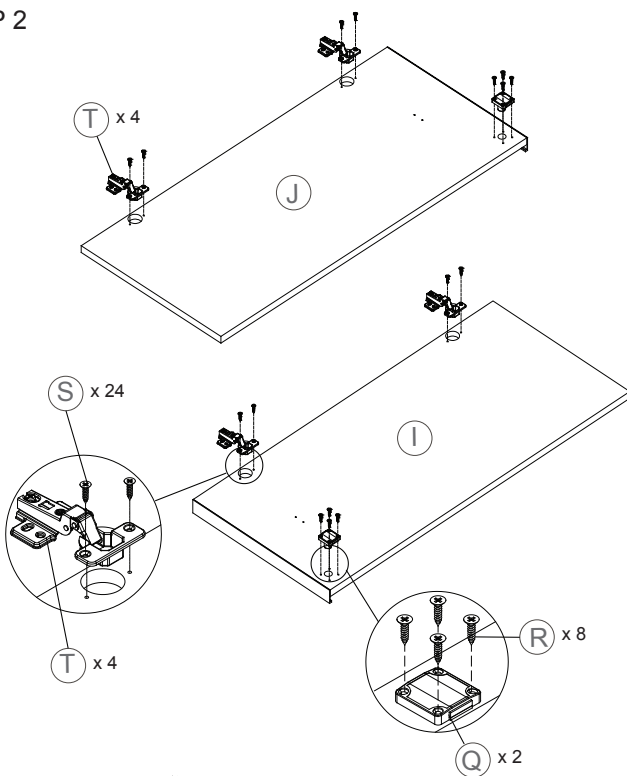
Congratulations on the purchase of your new *Signature Series* product!

INSTRUCTIONS

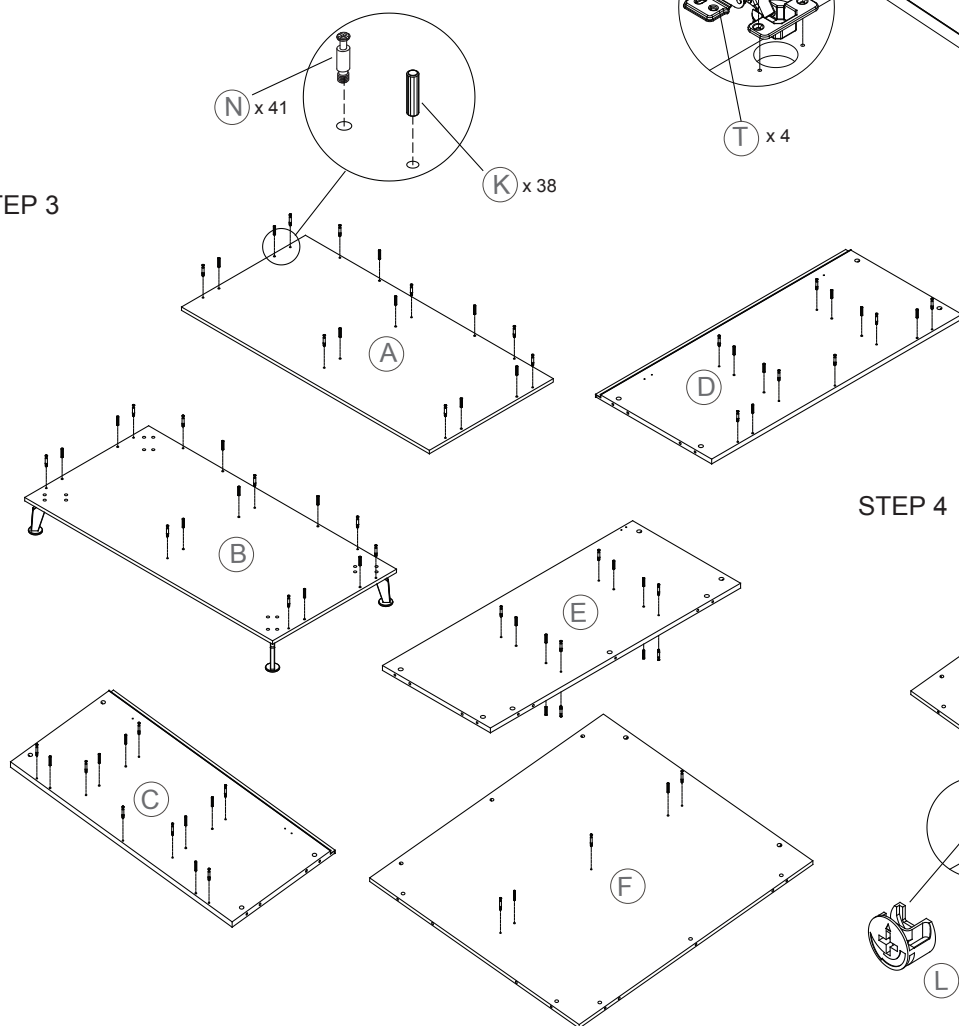
STEP 1



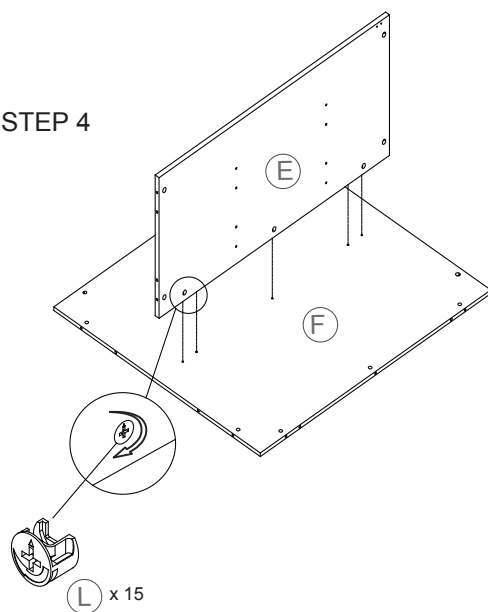
STEP 2



STEP 3



STEP 4

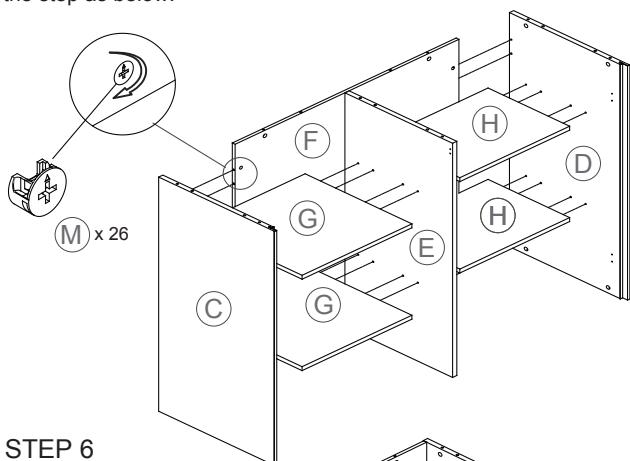


Congratulations on the purchase of your new *Signature Series* product!

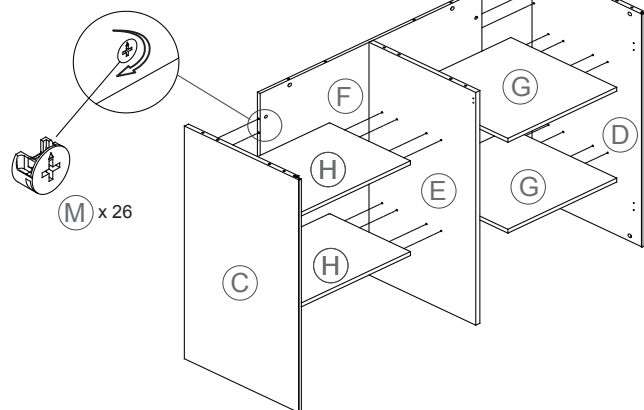
INSTRUCTIONS

STEP 5

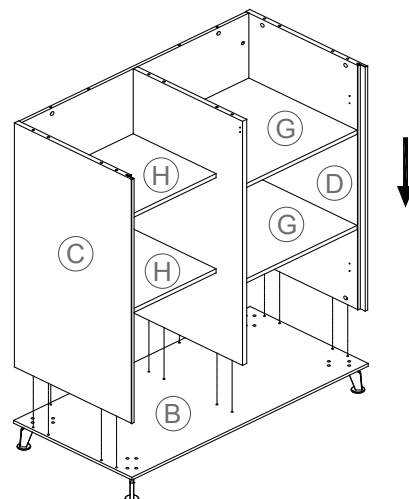
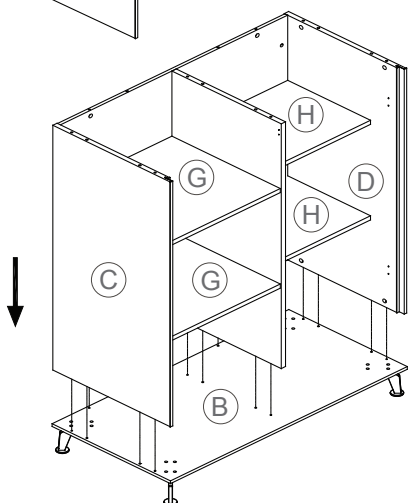
The Coat hanger installed on the right of the door, the step as below:



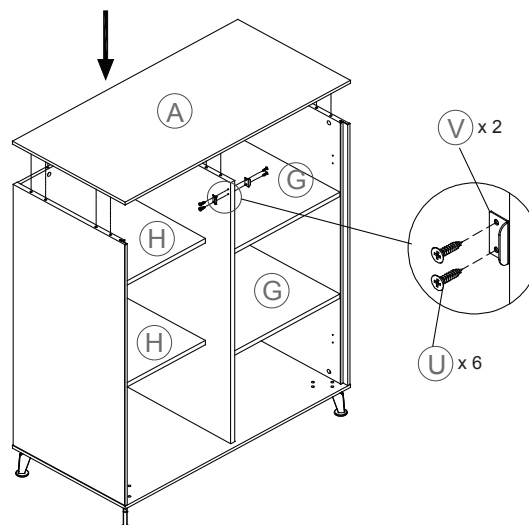
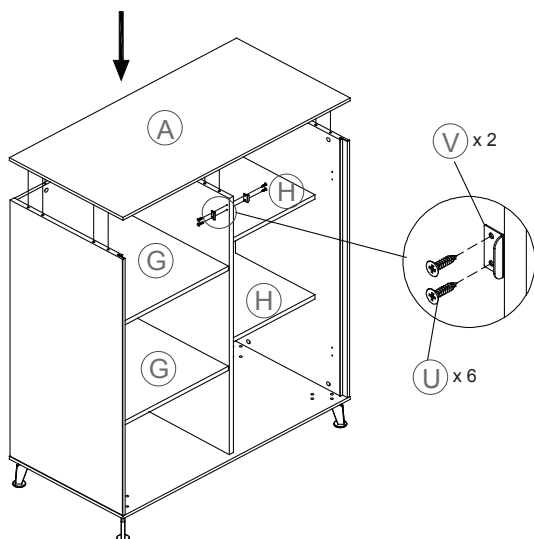
The Coat hanger installed on the left of the door, the step as below:



STEP 6



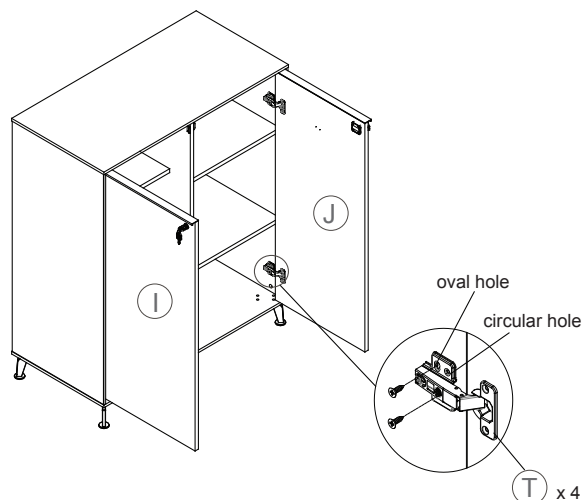
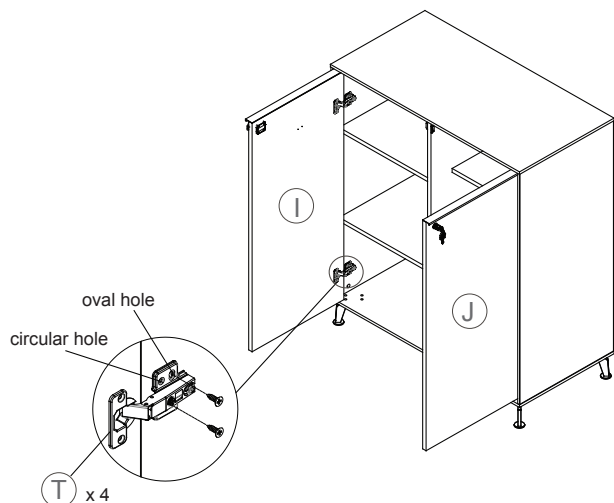
STEP 7



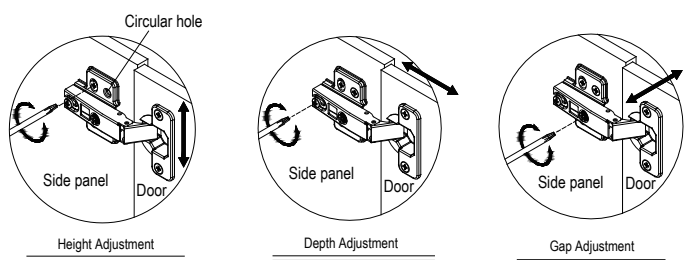
Congratulations on the purchase of your new *Signature Series* product!

INSTRUCTIONS

STEP 8



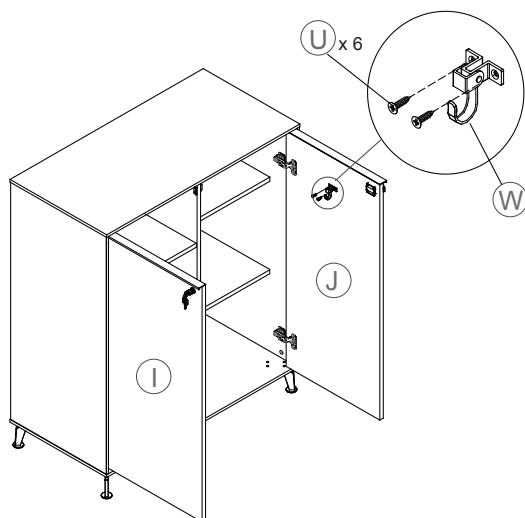
STEP 9



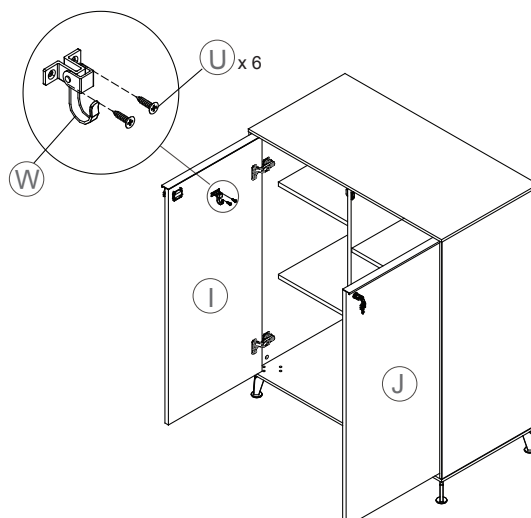
Once the height is adjusted, attach the hinge using screw **S** in the circular hole

STEP 10

The Coat hanger installed on the right of the door,



The Coat hanger installed on the left of the door,



Congratulations on the purchase of your new *Signature Series* product!

INSTRUCTIONS

STEP 11

