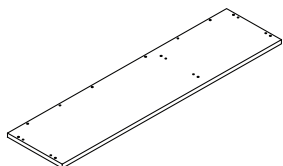


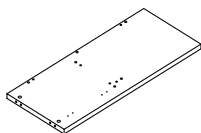
**Congratulations on the purchase of your new *Signature Series* product!**

## COMPONENTS

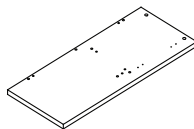
(A) Top -1pc



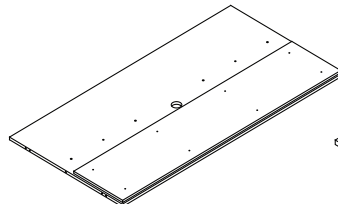
(B) Left side panel -1pc



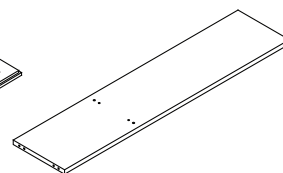
(C) Right side panel -1pc



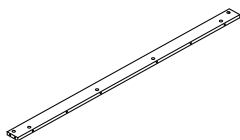
(D) Back panel with tackboard -1pc



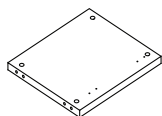
(E) Bottom- 1pc



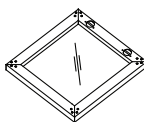
(F) Support bar - 1pc



(G) Center panel- 1pc



(H) Glass door -3pcs



## HARDWARE & TOOLS

(I) Cam bolt - 32pcs



(J) Cam lock - 32pcs



(K) Wood dowel - 24pcs



(L) Screw M4\*15.5 - 36pcs



### Tools Required for Assembly

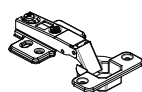


**Phillips Screw Driver**

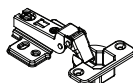
(M) Adhesive cover - 32pcs



(N) Full cover hinge - 2pcs



(O) Embedded hinge - 4pcs



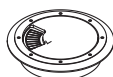
(P) Screw M4\*40 - 2pcs



(Q) Screw M4\*16 - 2pcs



(R) Grommet - 1pc



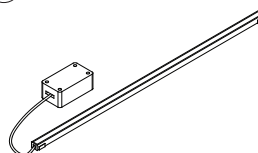
(S) Door bumper - 3pcs



(T) Double-sided EVA tape - 2pcs



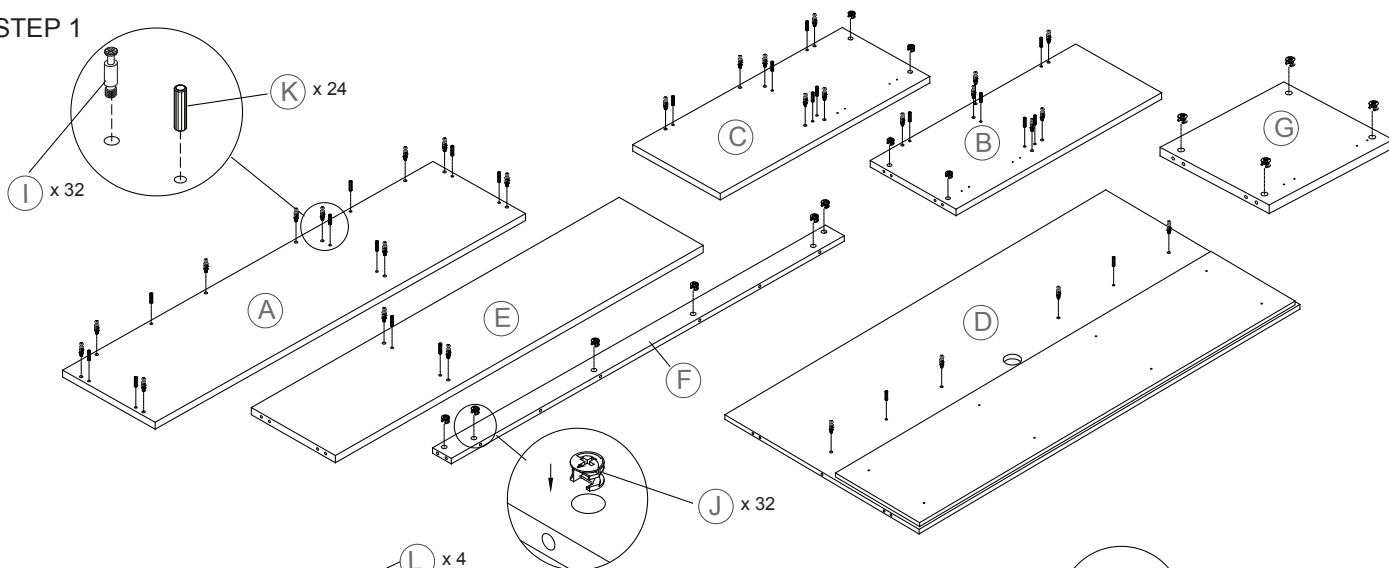
(U) LED Lamps - 1set



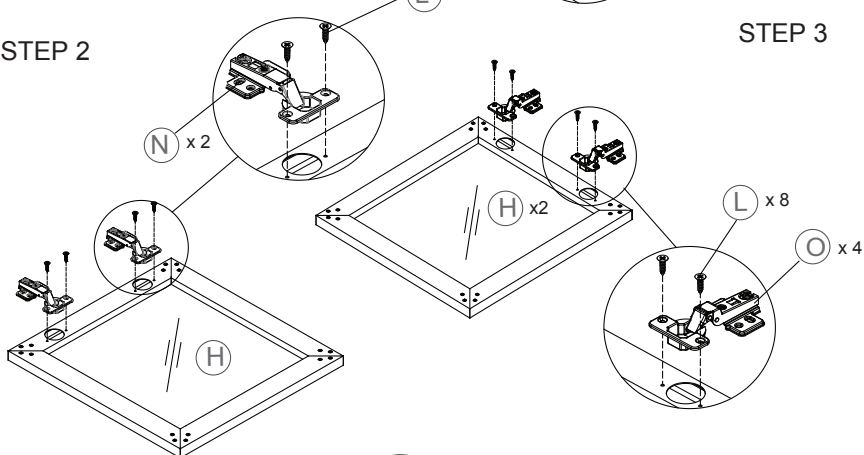
**Congratulations on the purchase of your new *Signature Series* product!**

INSTRUCTIONS

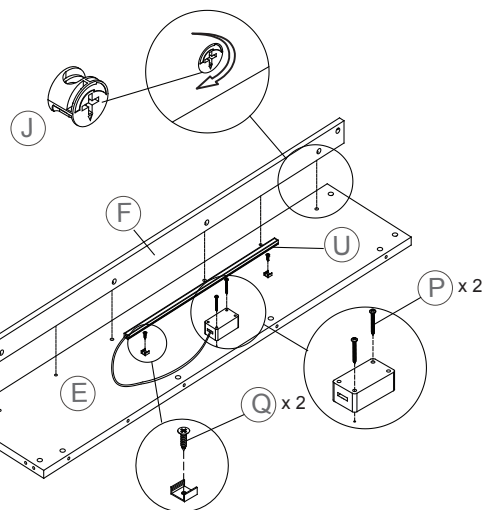
STEP 1



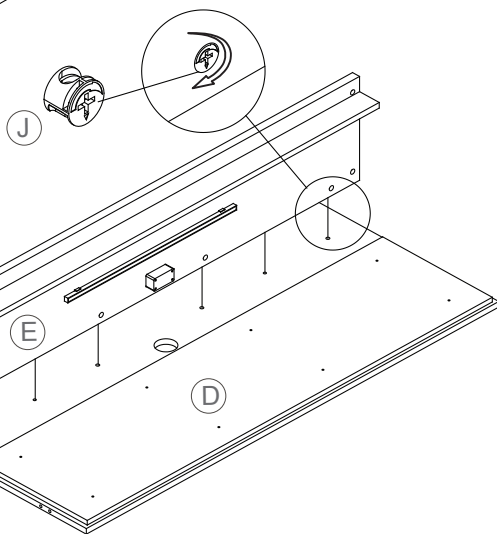
STEP 2



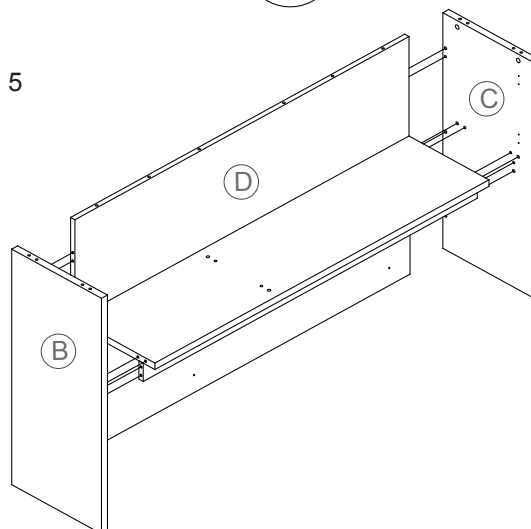
STEP 3



STEP 4



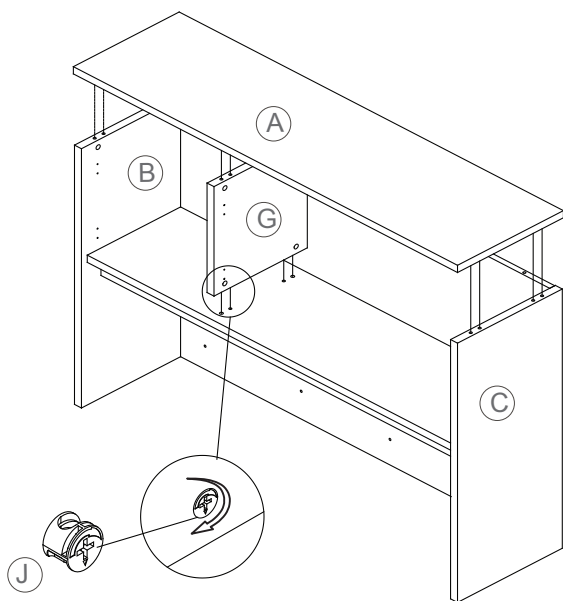
STEP 5



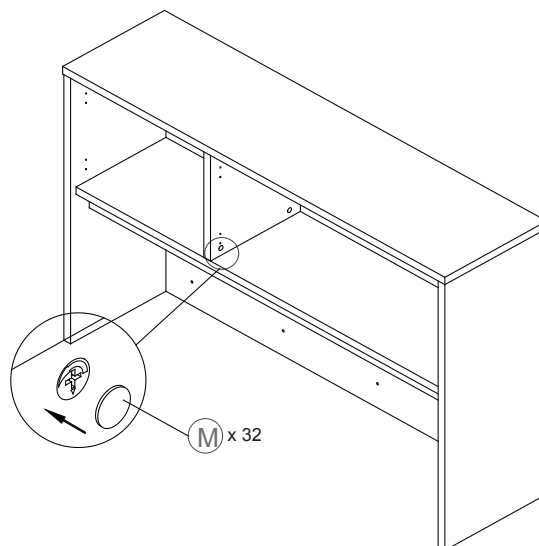
**Congratulations on the purchase of your new *Signature Series* product!**

## INSTRUCTIONS

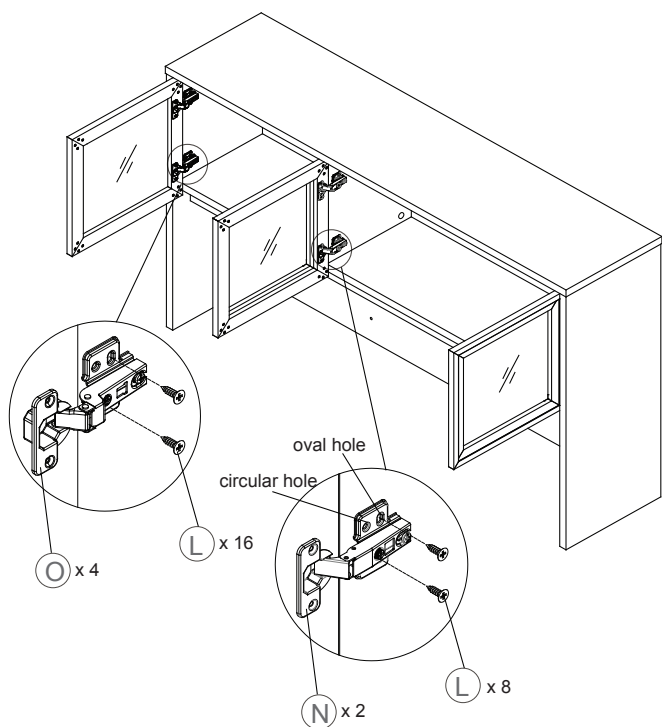
### STEP 6



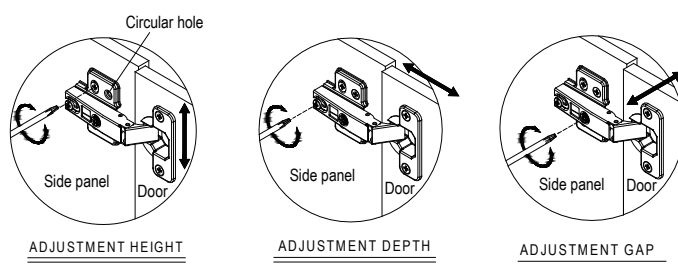
### STEP 7



### STEP 8



### STEP 9

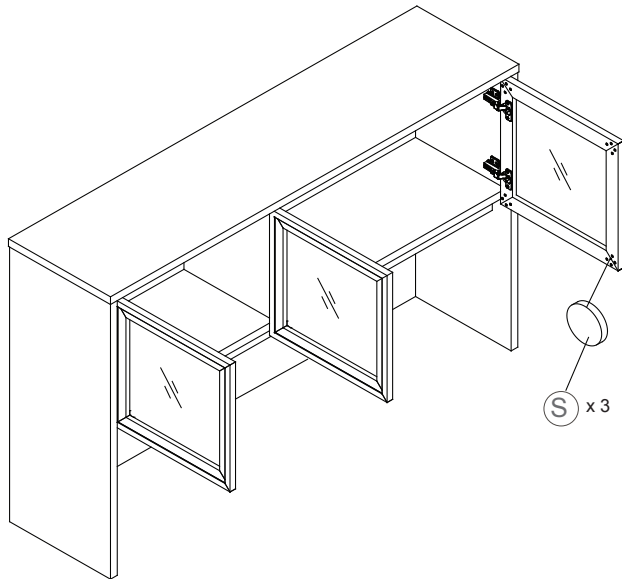


Once height adjustment is complete, insert screw (L) into the circular hole to attach the hinge.

**Congratulations on the purchase of your new *Signature Series* product!**

INSTRUCTIONS

STEP 10



STEP 11

