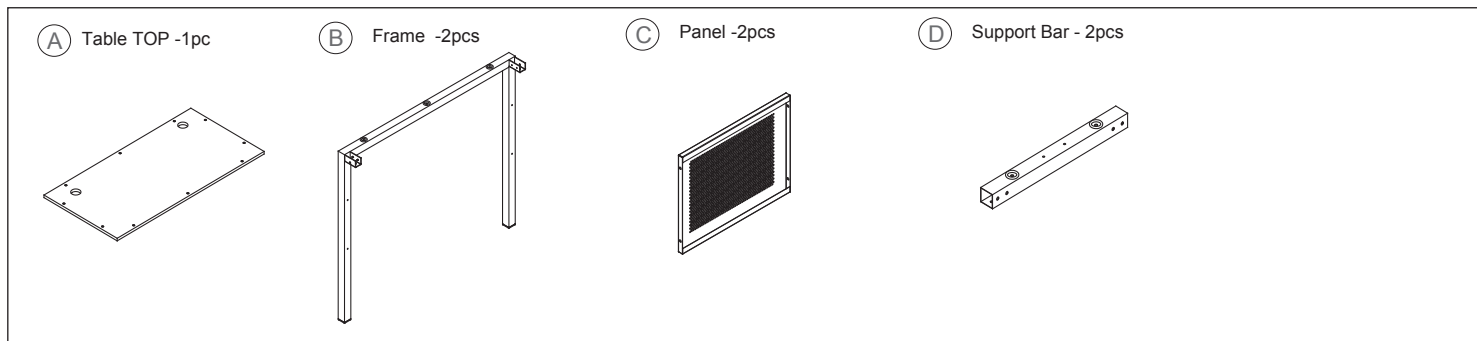
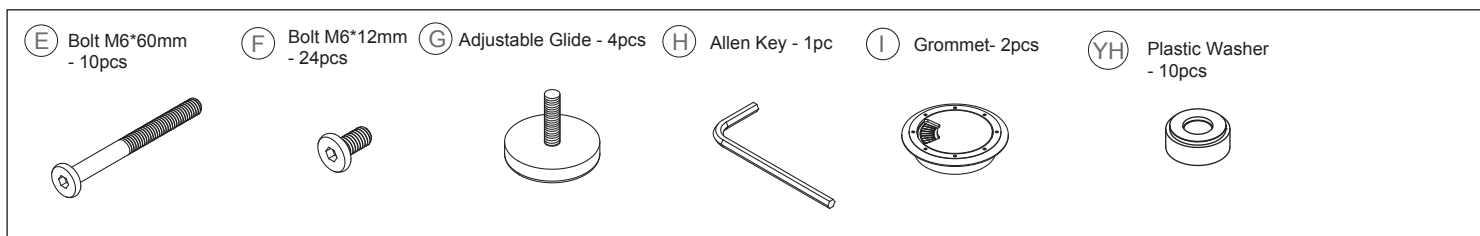


**Congratulations on the purchase of your new *Signature Series* product!**

## COMPONENTS

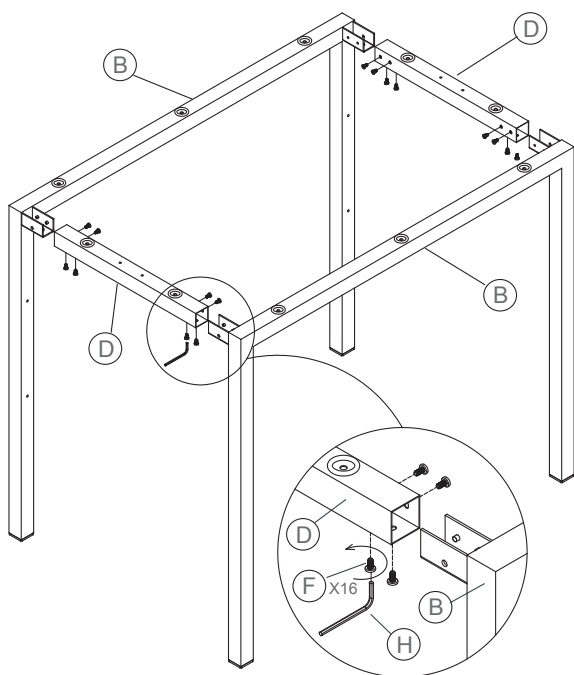


## HARDWARE & TOOLS



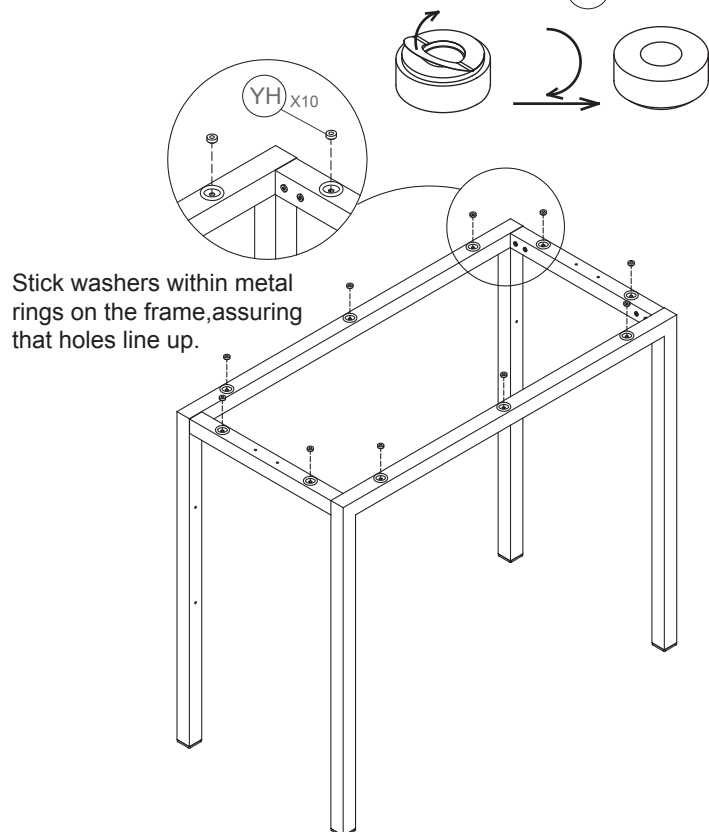
## INSTRUCTIONS

**STEP 1** **Note:** Do not tighten screws until all screws have been hand-started.



**STEP 2**

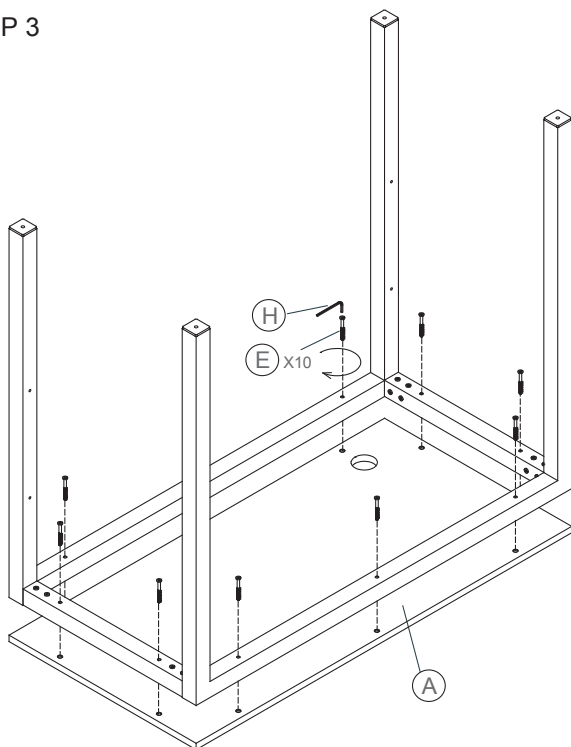
Peel off the film of (YH) Washers



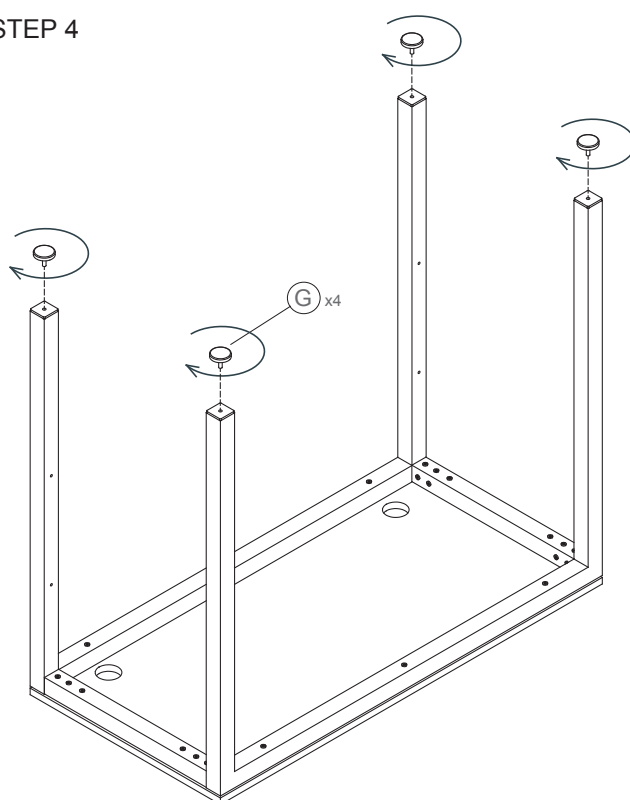
**Congratulations on the purchase of your new *Signature Series* product!**

## INSTRUCTIONS

STEP 3



STEP 4



STEP 5

