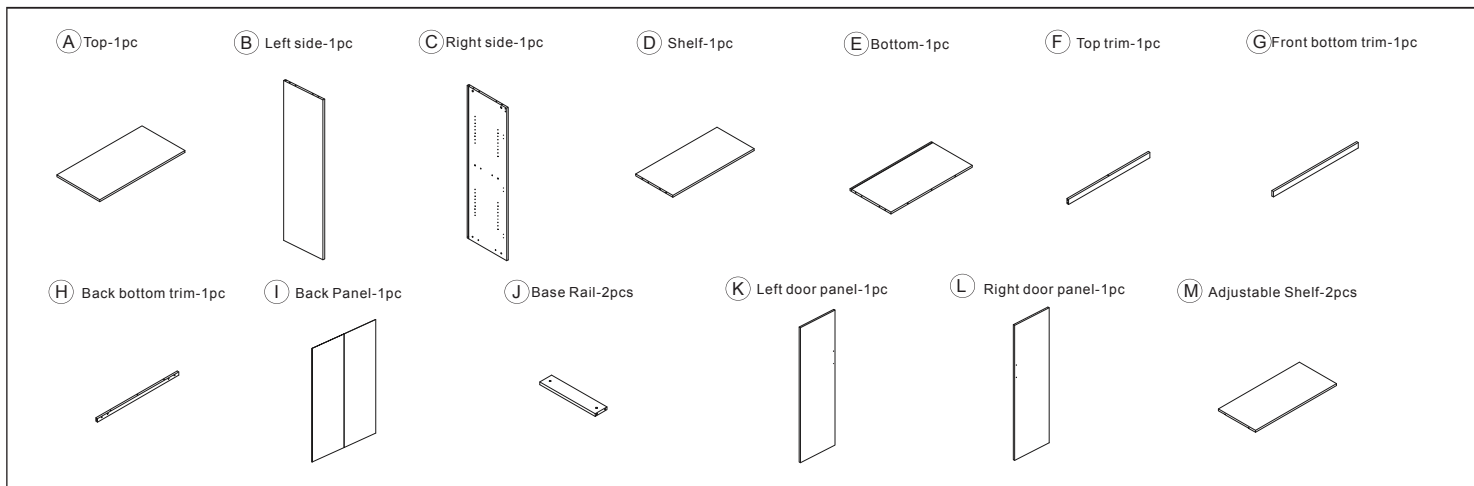
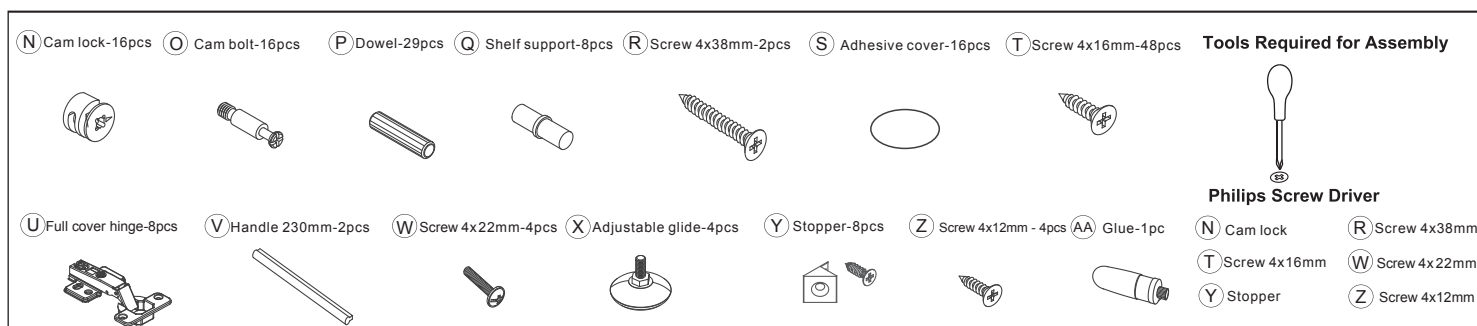


**Congratulations on the purchase of your new *Signature Series* product!**

## COMPONENTS

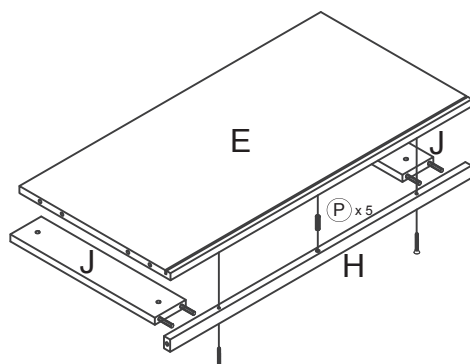


## HARDWARE & TOOLS

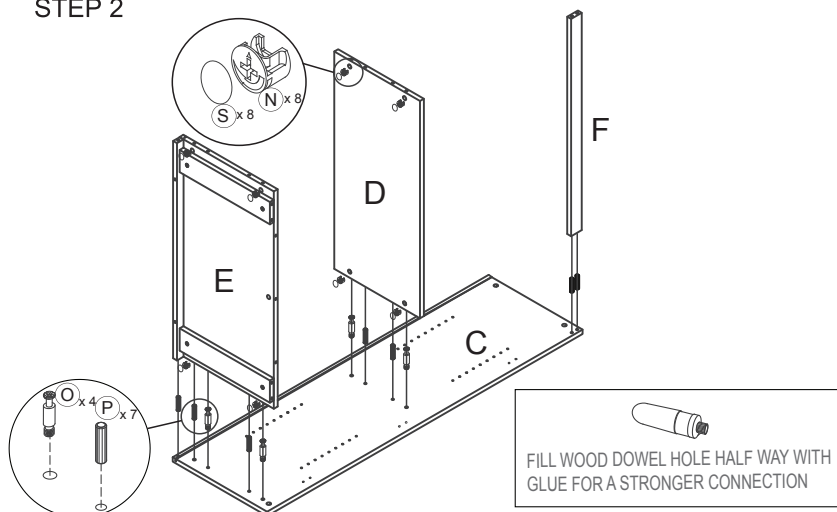


## INSTRUCTIONS

### STEP 1



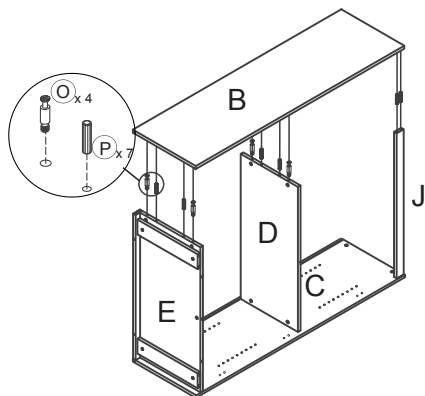
### STEP 2



**Congratulations on the purchase of your new *Signature Series* product!**

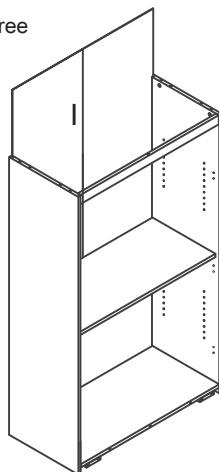
## INSTRUCTIONS

### STEP 3

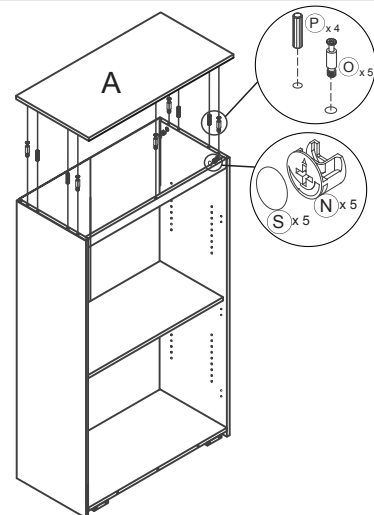


### STEP 4

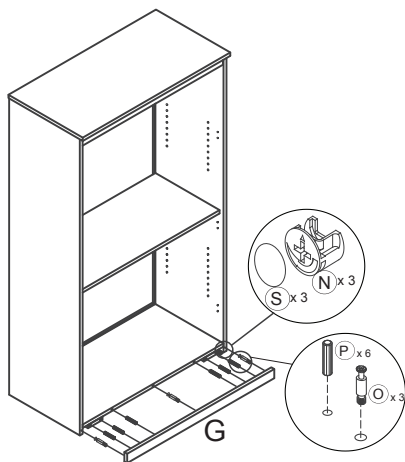
It need turn 90 degree  
from STEP 3



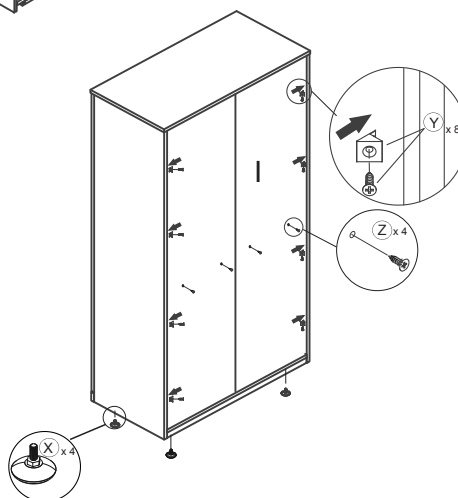
### STEP 5



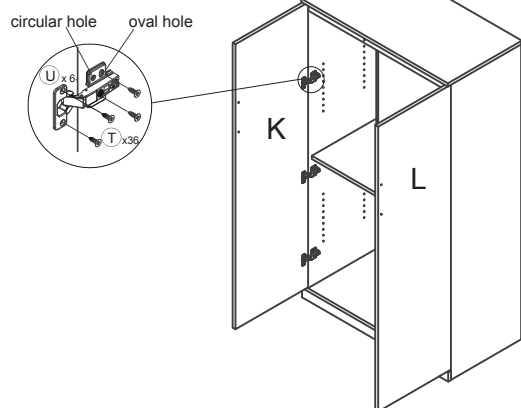
### STEP 6



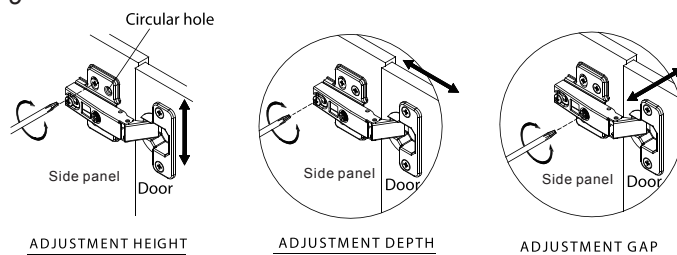
### STEP 7



### STEP 8



### STEP 9

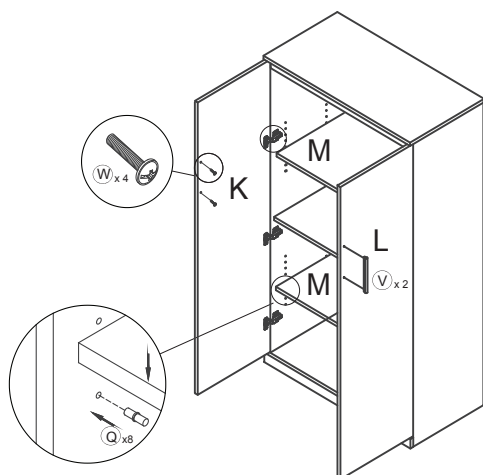


When adjustment height is OK,  
Then use screw T to fix the hinge  
in the circular hole

**Congratulations on the purchase of your new *Signature Series* product!**

## INSTRUCTIONS

### STEP 10



### COMPLETED

