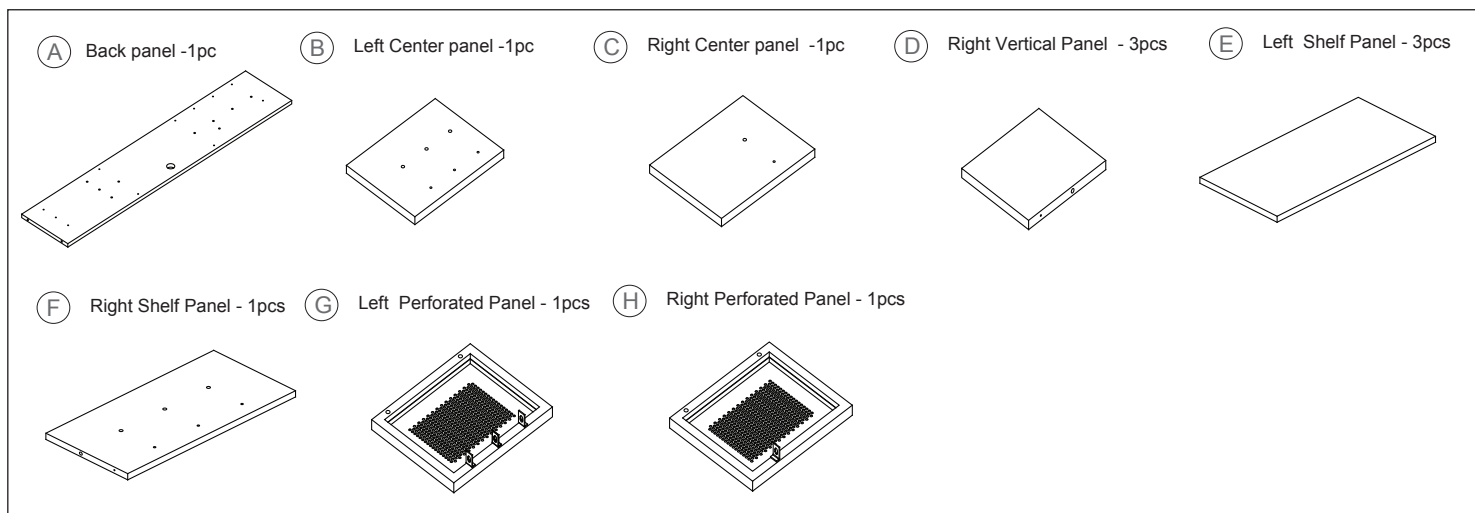
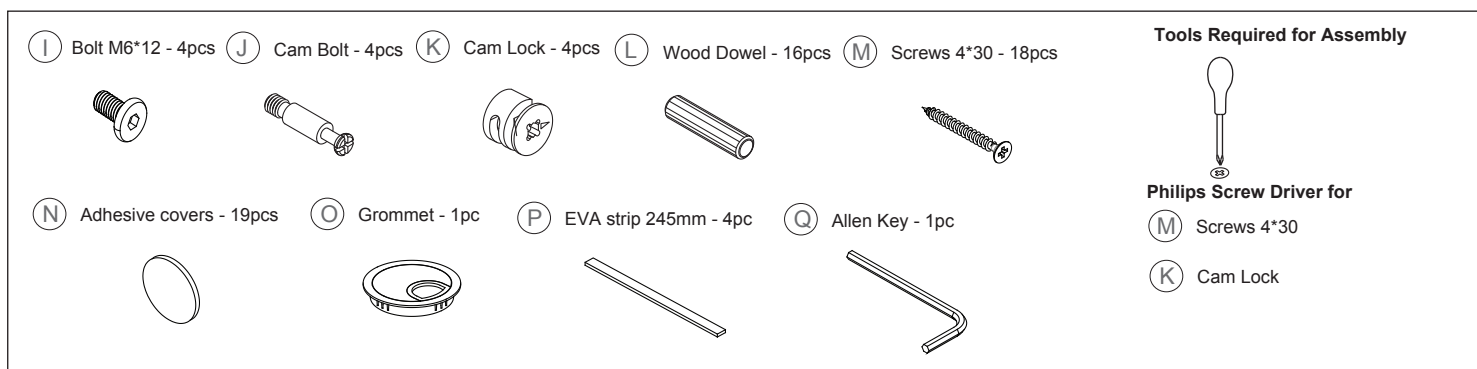


Congratulations on the purchase of your new *Signature Series* product!

COMPONENTS

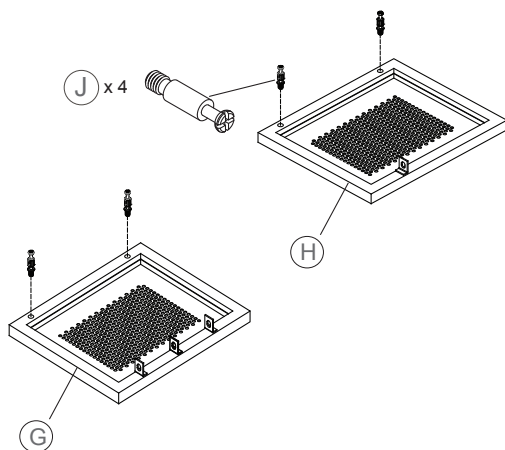


HARDWARE & TOOLS

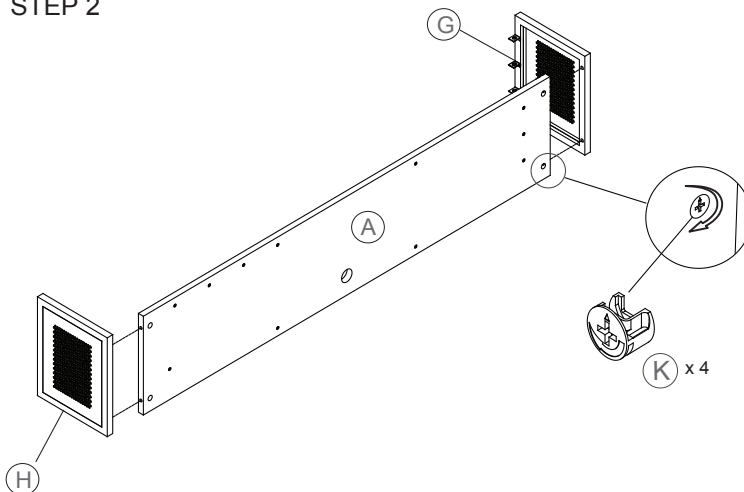


INSTRUCTIONS

STEP 1



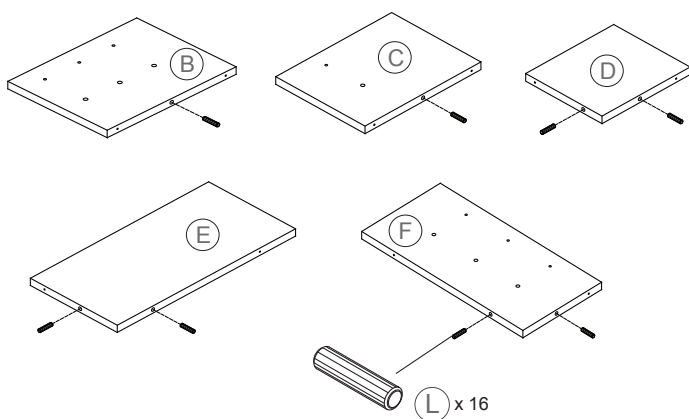
STEP 2



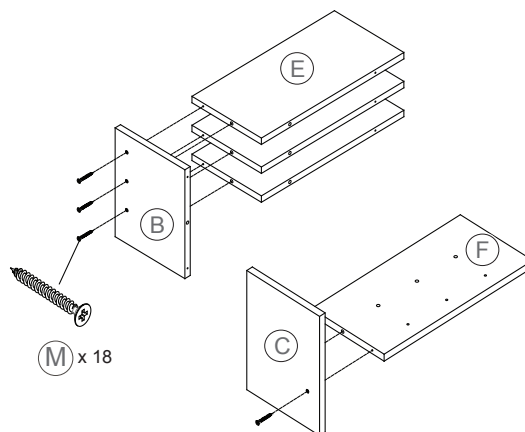
Congratulations on the purchase of your new *Signature Series* product!

INSTRUCTIONS

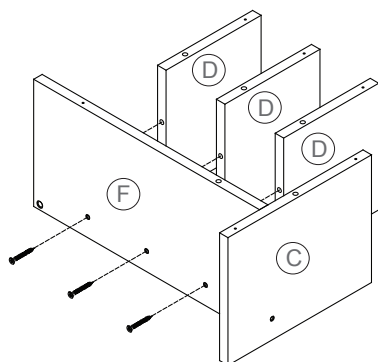
STEP 3



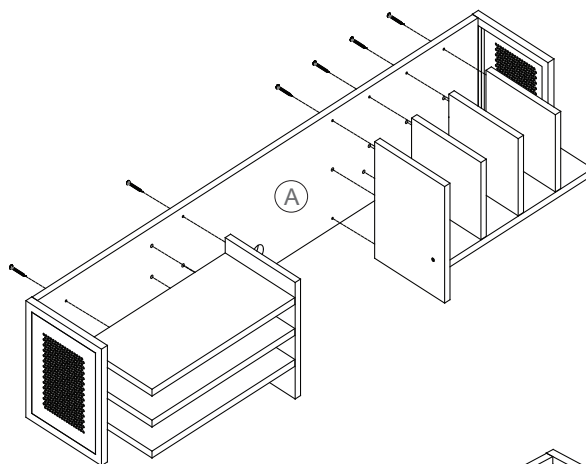
STEP 4



STEP 5

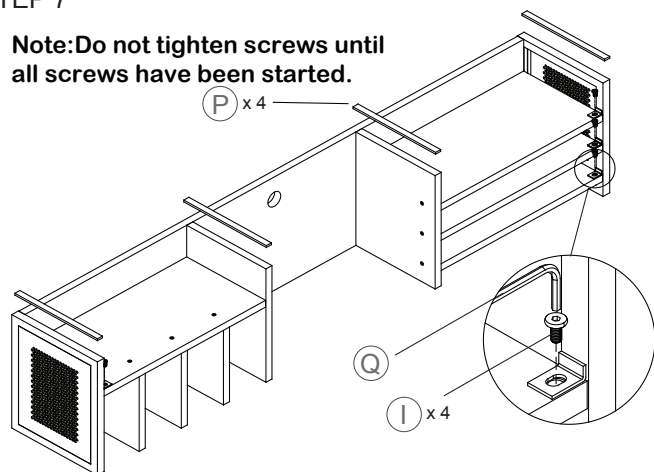


STEP 6



STEP 7

Note: Do not tighten screws until all screws have been started.



STEP 8

