

LE9406

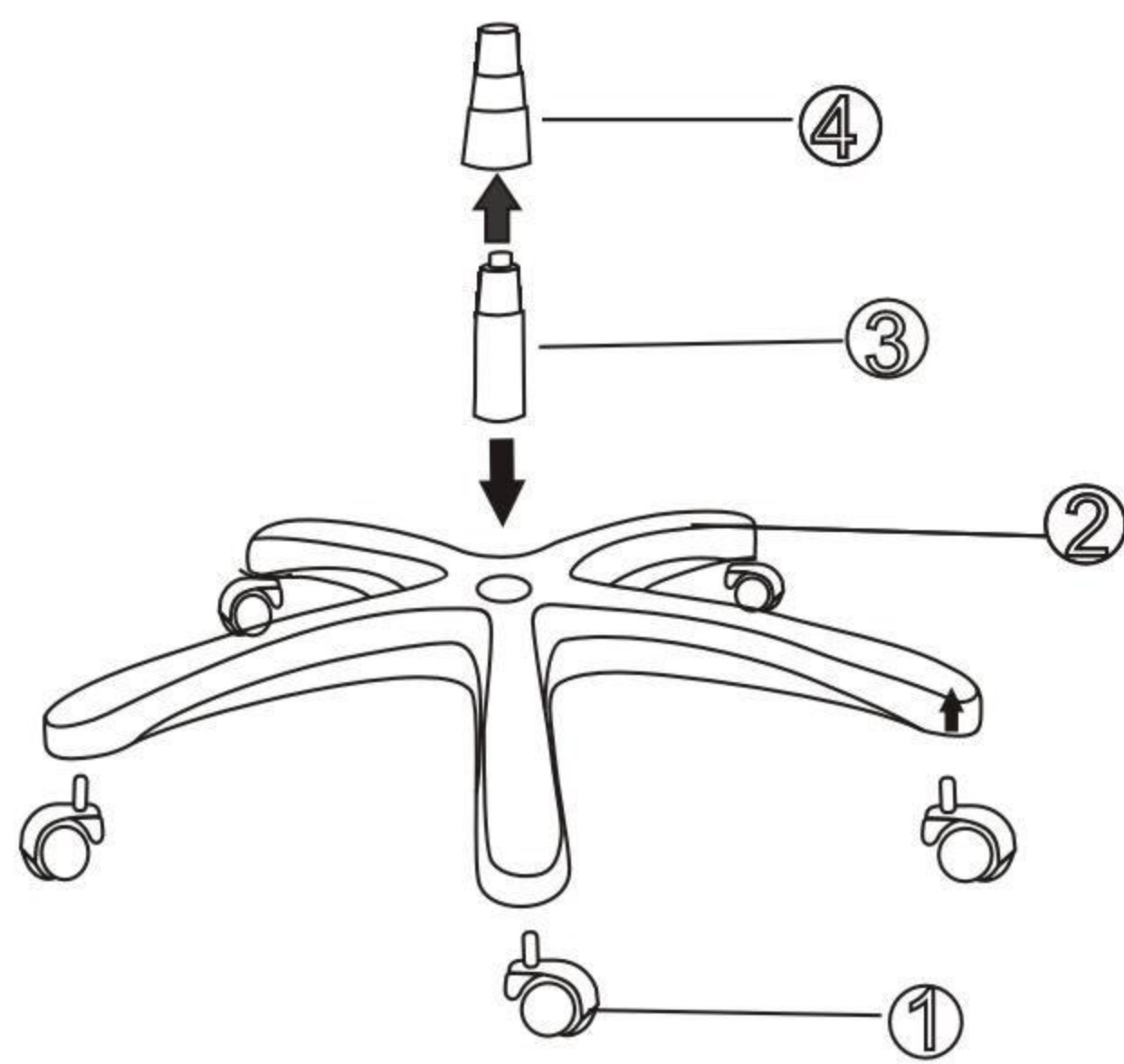
ASSEMBLY INSTRUCTION

REMOVE ALL ITEMS FROM THE CARTON .VERIFY ALL PIECES BEFORE ASSEMBLY.

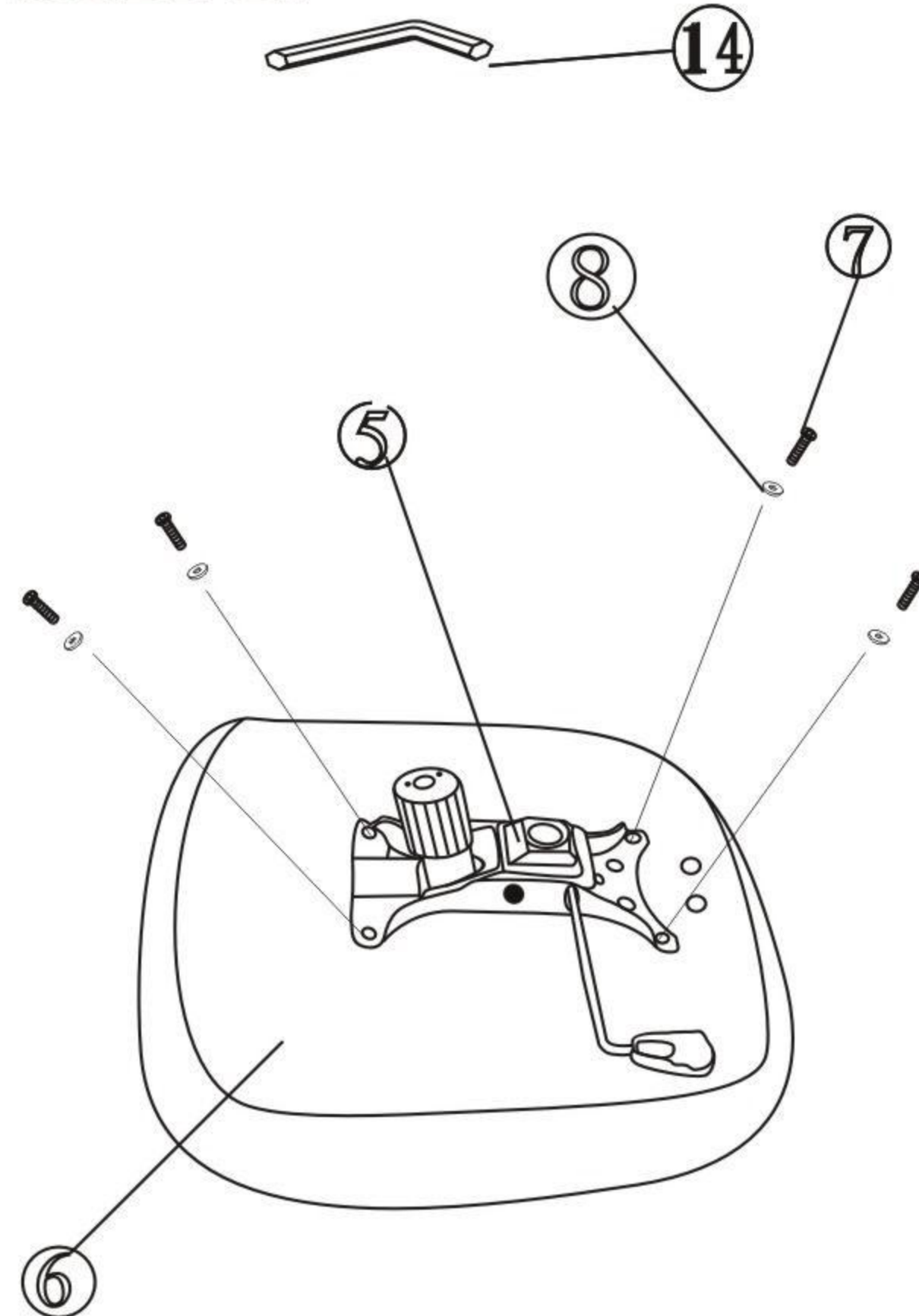
PARTS LIST

KEY	QTY	DESCRIPTION	KEY	QTY	DESCRIPTION	KEY	QTY	DESCRIPTION
1	5	CASTER	6	1	SEAT CUSHION	11	4	SCREWM8*60
2	1	BASE	7	5	SCREWS 1/4"X3/4"	12	5	SCREWS 1/4"X1"
3	1	SEAT POST	8	10	SMALL WASHER	13	1	BACK CUSHION
4	1	SEAT POST COVER	9	1 SET	RIGHT AND LEFT ARM	14	1	ALLEN WRENCH
5	1	SEAT PLATE	10	4	ARM COVER			

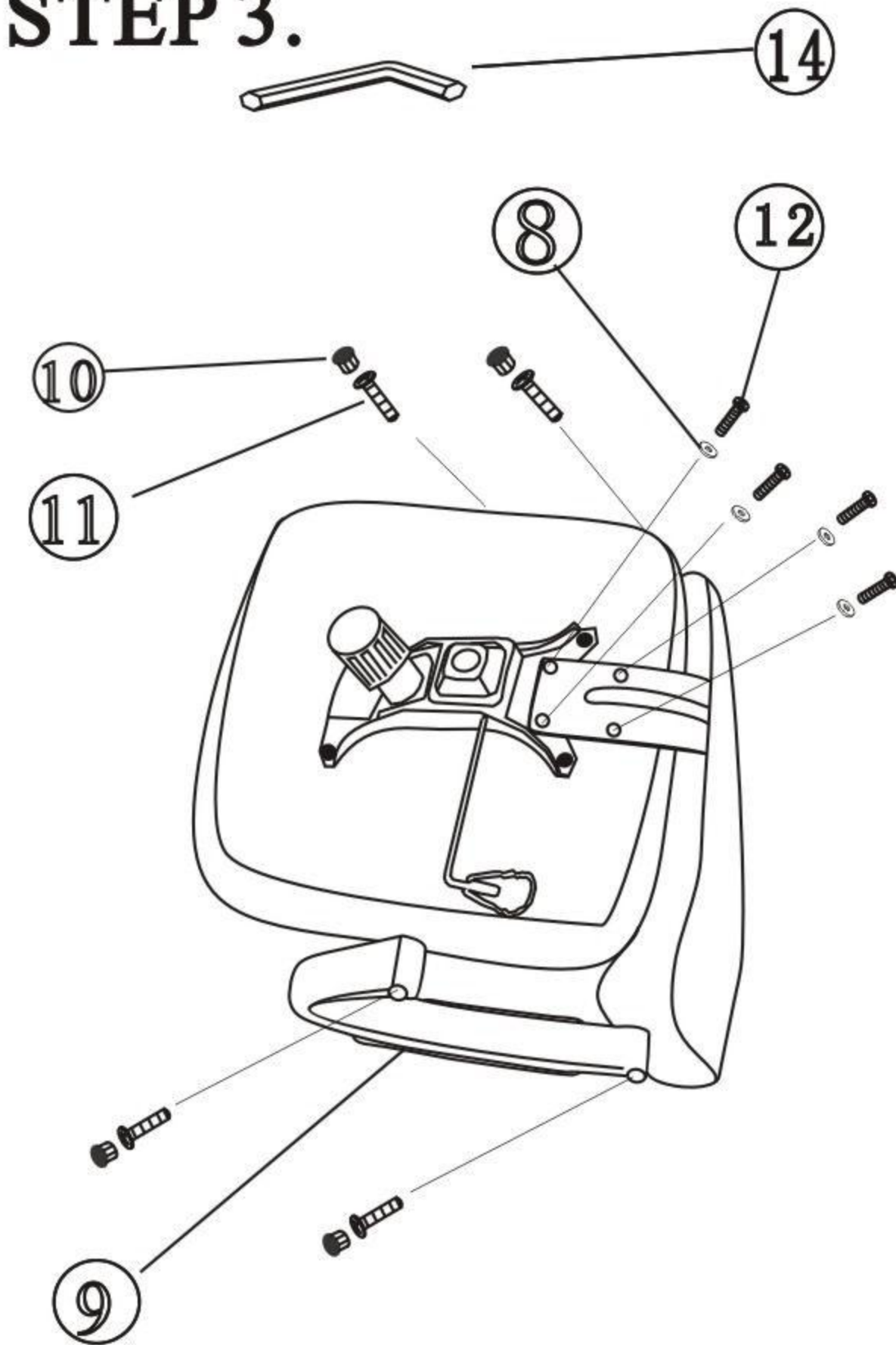
STEP 1.



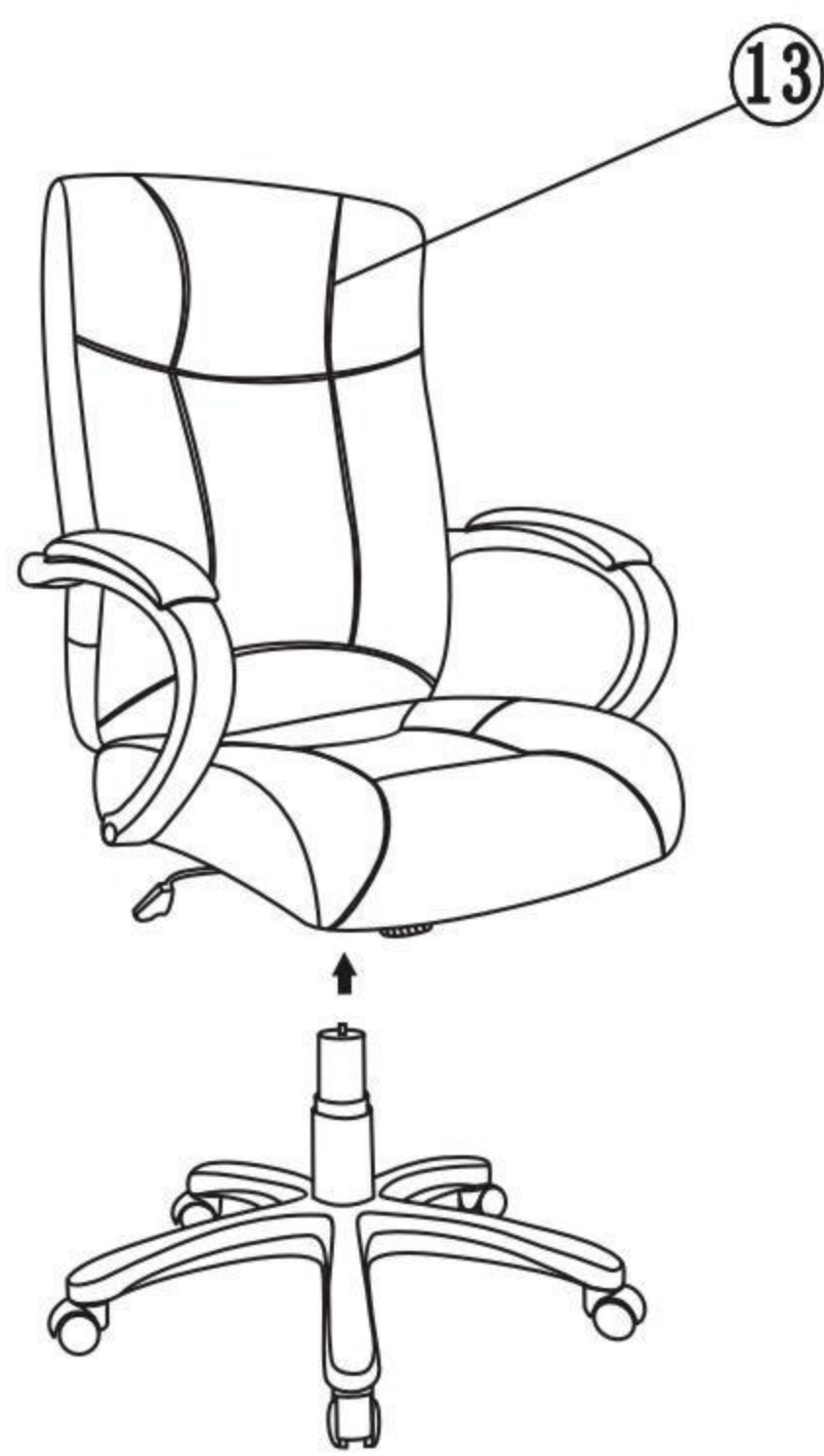
STEP 2.



STEP 3.



STEP 4.



STEP 5.



PREVENTIVE MAINTENANCE AND WARNING

- USE THIS PRODUCT ONLY FOR SEATING ONE PERSON AT A TIME.
- DO NOT USE CHAIR AS STEP STOOL/LADDER.
- DO NOT USE CHAIR UNLESS ALL BOLTS,SCREWS ARE TIGHT.AT LEAST EVERY SIX MONTHS, CHECK ALL BOLTS,SCREWS TO BE SURE THEY ARE TIGHT.
- IF ANY PARTS ARE MISSING,BROKEN,DAMAGED OR WORN,STOP USE OF THE PRODUCT UNTIL REPAIRS ARE MADE USING FACTORY AUTHORIZED PARTS.
- FAILURE TO FOLLOW THESE WARNINGS CAN RESULT IN SERIOUS INJURY.