


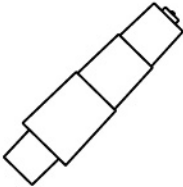



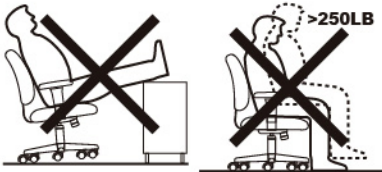
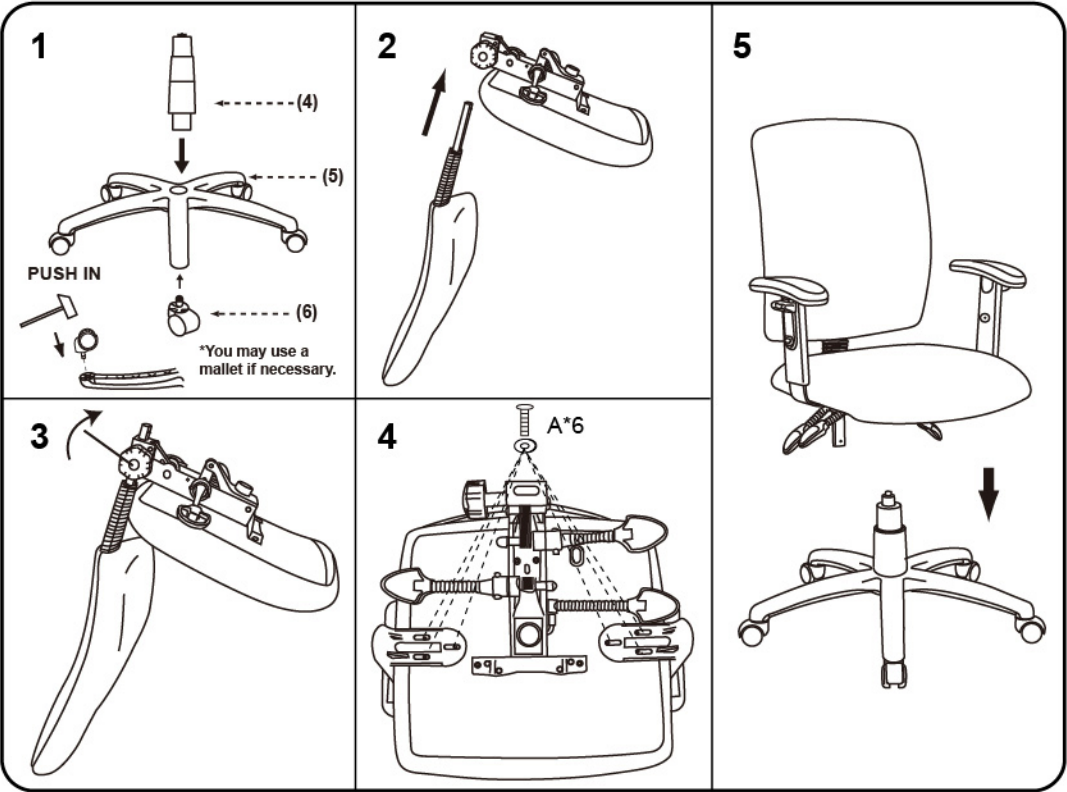


**IMPORTANT NOTICE:**  
**HARDWARE PACKAGE IS ATTACHED**  
**ON THE BOTTOM OF SEAT CUSHION.**

MODEL:B3035 3036 3037 B3045 3046 3047

(1)x1	(2)x1	(3)x1 (L)x1 (R)
 Back Cushion	 Seat Cushion	 Left-Arm-L Right-Arm-R
(4)x1	(5)x1	(6)x 5
 Gas Lift W/ Cover	 Base	 Caster
<div>(A)x6  M6 X 28 Arm Screws</div>		



Insert and loosely tighten all screws. When assembly is completed, fully tighten all screws before using. This chair is only intended for sitting. Any other use will void the warranty.