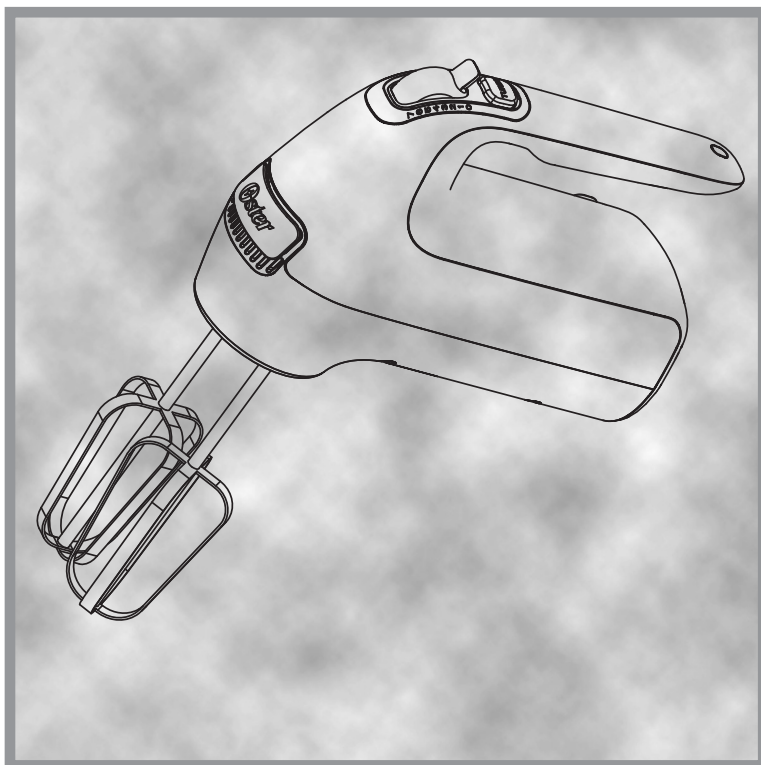


Oster®



MODEL **FPSTHMTJ-S**

INSTRUCTION MANUAL
HAND MIXER

READ ALL INSTRUCTIONS BEFORE USING THIS APPLIANCE

IMPORTANT SAFEGUARDS

When using electrical appliances, basic safety precautions should always be followed, including the following:

1. Read all instructions before using this product.
2. To protect against electric shock, do not place or immerse cord, plugs, or appliance in water or other liquid.
3. This appliance is not intended for use by persons (including children) whose physical, sensory or mental capabilities are reduced or lack of experience or knowledge, unless such persons are supervised or trained to operate the appliance by a person responsible for their safety. Close supervision is necessary if you use the appliance near children or people with disabilities. Children should be supervised to ensure that they do not play with the appliance.
4. Never leave appliance unattended when in use.
5. Unplug from outlet when not in use, before putting on or taking off parts and before cleaning. Allow to cool before putting on or taking off parts, and before cleaning. To disconnect, turn any control to OFF, then unplug power cord from outlet. Do not disconnect by pulling on cord. To unplug, grasp the plug and pull from the outlet.
6. Avoid any contact with moving parts. Keep hands, hair, clothing, as well as spatulas and other utensils away from beaters during operation to reduce the risk of injury to persons or damage to the mixer.
7. Remove beaters from mixer before washing.
8. Do not operate any appliance with a damaged cord or plug or after the appliance malfunctions, or has been damaged in any manner. Do not attempt to replace or splice a damaged cord. Return appliance to the manufacturer (see warranty) for examination, repair or adjustment.
9. For appliances with markings on plug blade: This appliance has important markings on the plug blade. The attachment plug or entire cordset (if plug is molded onto cord) is not suitable for replacement. If damaged, the appliance shall be replaced.
10. The use of attachments not recommended or sold by the manufacturer may cause fire, electric shock or injury.
11. Do not use outdoors or for commercial purposes.
12. Do not let cord hang over edge of table or counter, or touch hot surfaces, including the stove.
13. Do not use appliance for other than intended use. Misuse can cause injuries. Always use appliance on a dry, stable, level surface.
14. Do not place appliance on or near a hot burner or in a heated oven.

THIS UNIT IS FOR HOUSEHOLD USE ONLY.

SAVE THESE INSTRUCTIONS

North American models with polarized plugs:



POLARIZED PLUG

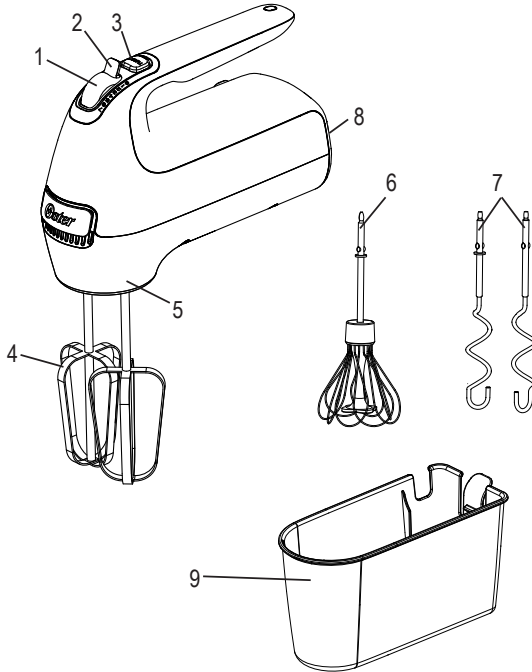
This appliance has a polarized plug (one blade is wider than the other). To reduce the risk of electric shock, this plug is intended to fit into a polarized outlet only one way. If the plug does not fit fully into the outlet, reverse the plug. If it still does not fit, contact a qualified electrician. Do not attempt to modify the plug in any way. If the plug fits loosely into the AC outlet or if the AC outlet feels warm do not use that outlet.

WELCOME

Congratulations on your purchase of an OSTER® Hand Mixer!

To learn more about OSTER® products, please visit us at www.oster.com (U.S.A.)

DESCRIPTION OF THE APPLIANCE



- | | |
|--|------------------------|
| 1. On/Off Speed Control – Beater
Eject Button | 6. Super Aerator Whisk |
| 2. Thumb Tab | 7. Dough Hooks |
| 3. Burst of Power Button | 8. Heel Rest |
| 4. Beaters | 9. Storage Case |
| 5. Large Drive Hole | |

LEARNING ABOUT YOUR HAND MIXER

The OSTER® Hand Mixer has been designed to assist you in preparing delicious foods.

TURBO FEATURE

The turbo feature allows for an added boost to the selected speed setting at the press of the button. During especially heavy mixing tasks, press the button to drive through the mixture with ease. Once the button is released, the mixer will return to the original speed setting.

7-SPEED CONTROL - BEATER EJECT BUTTON

This OSTER® Hand Mixer features a combination 7-speed control - beater eject button. This design allows for easy speed selection and ejection of beaters or other attachments. Press forward on the thumb tab to turn the mixer on and to select the desired speed setting (Speed Settings 1-7). When the speed control is in the OFF position you can push down on the beater eject button to release the beaters or other attachments. There may not be a noticeable click.

CAUTION: Make sure hand mixer is unplugged before removing or inserting any attachments.

BEATERS

The beater design allows for thorough, fast mixing results for all types of batters. (See Fig. A)

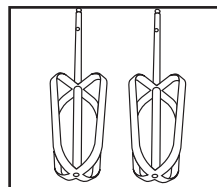


Fig. A

DOUGH HOOKS

Ideal for dry ingredients or when folding two portions of a recipe together, such as a beaten egg white into a batter or when directions call for LOW speed. (See Fig. B)

NOTE: That the beaters are interchangeable but dough hooks are not. When using dough hooks, the dough hook with the collar on the stem fits into the larger drive hole on the mixer.

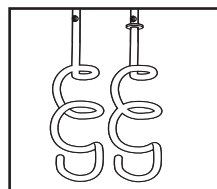


Fig. B

COMFORT HANDLE

The handle has been designed for comfort to prevent hand fatigue during heavy or long mixing tasks. (See Fig. C)

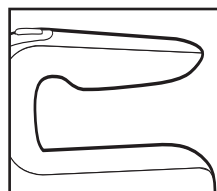


Fig. C

SUPER AERATOR WHISK

The whisk is used to beat air into mixtures such as egg whites, yolks, or cream. Super Aerator Whisk is specially designed for 30% faster whipping compared to a standard Oster balloon whisk.

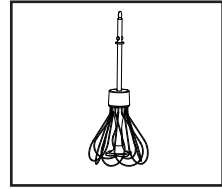


Fig. D

STORAGE CASE

Lets you store your hand mixer and accessories conveniently together for easy access and travel.

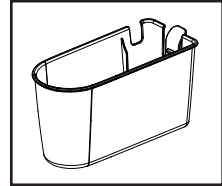


Fig. E

USING YOUR HAND MIXER

Before using your mixer for the first time, wash the beaters in hot/soapy water, or the dishwasher. Rinse and dry.

Be sure speed control is in the "OFF" or "0" position and unplugged from an electrical outlet. Insert beaters one at a time, by placing stem end of beaters into the opening drive holes on the bottom of the mixer. Turn beater slightly and push in until beater clicks into position. Beaters are interchangeable.

MIXING

To avoid splatters start unit on lowest speed and slowly increase to desired speed setting. Slowly guide mixer around sides and through center of bowl, going in the same direction. Be careful not to overbeat the mixture. Overbeating tends to make some mixtures tough.

Whenever scraping of the bowl is required, stop the mixer and scrape sides and bottom of bowl with a rubber spatula as needed. Turn speed control to "OFF" or "0" and rest mixer on its heel rest while adding ingredients. Be sure to position beaters over mixing bowl so any dripping will fall back into mixing bowl.

When mixing is complete, set the control to "1", and raise beaters slowly from batter to clean off clinging food. Be sure to set the unit to "0" before raising beaters completely out of mixing bowl.

NOTE: The hand mixer should not be operated for more than 5 minutes. After this time, let it cool for at least 5 minutes before using again.

EJECTING BEATERS

Be sure the control is in the "OFF" or "0" position and cord is removed from electrical outlet. Scrape off any excess batter with a rubber spatula. Grasp the stems of the beaters with your hand and press the beater eject button. Beaters will release into your hand.

SPEED GUIDE FOR HAND MIXER

SPEED

MIXING TASKS

1	Stir, fold, knead	Use when stirring liquid ingredients or when mixing dry and liquid ingredients together alternately in a recipe. Use when preparing any of the ready-prepared or packaged instant puddings.
2	Mix	Use when a recipe calls for combining ingredients together. Use for quick breads or muffins that require a brisk action, just enough to blend.
3	Blend	Use when preparing cake mixes or for directions calling for medium speed. Use to cream butter and sugar together.
4-5	Beat	Use when preparing a frosting from a recipe or package. Use when whipping cream for desserts.
6-7	Whip	Use to mash potatoes to develop a light and fluffy texture. Use when whipping egg whites.
Turbo Feature		During especially heavy mixing tasks, press the button to drive through the mixture with ease.

CARING FOR YOUR MIXER

CLEANING

Wash the beaters and attachments before and after every use. Beaters and attachments are dishwasher safe. After removing the cord from the electrical outlet, clean the mixer head with a damp cloth then wipe dry.

CAUTION: To protect against electric shock, do not place or immerse cord, plugs, or appliance in water or other liquid.

Avoid the use of abrasive cleaners that will damage the finish of your mixer. The motor of your mixer has been carefully lubricated at the factory and does not require any additional lubricant.

STORAGE

Place all accessories inside of the storage box orienting the stem of the beaters, dough hooks and whisk towards the back of the container. Finally insert the hand mixer in the storage container making sure the lock tab in the back locks into the rear cap of the hand mixer.

MAINTENANCE

This appliance has no user serviceable parts. Any servicing beyond that described in the Cleaning Section should be performed by an Authorized Service Representative only. See warranty section.

1 YEAR LIMITED WARRANTY

Sunbeam Products, Inc., or if in Canada, Newell Brands Canada ULC, (collectively “Sunbeam”) warrants that for a period of one year from the date of purchase, this product will be free from defects in material and workmanship. Sunbeam, at its option, will repair or replace this product or any component of the product found to be defective during the warranty period. Replacement will be made with a new or remanufactured product or component. If the product is no longer available, replacement may be made with a similar product of equal or greater value. This is your exclusive warranty. Do NOT attempt to repair or adjust any electrical or mechanical functions on this product. Doing so will void this warranty.

This warranty is valid for the original retail purchaser from the date of initial retail purchase and is not transferable. Keep the original sales receipt. Proof of purchase is required to obtain warranty performance. Sunbeam dealers, service centers, or retail stores selling Sunbeam products do not have the right to alter, modify or any way change the terms and conditions of this warranty.

This warranty does not cover normal wear of parts or damage resulting from any of the following: negligent use or misuse of the product, use on improper voltage or current, use contrary to the operating instructions, disassembly, repair or alteration by anyone other than Sunbeam or an authorized Sunbeam service center. Further, the warranty does not cover: Acts of God, such as fire, flood, hurricanes and tornadoes.

What are the limits on Sunbeam’s Liability?

Sunbeam shall not be liable for any incidental or consequential damages caused by the breach of any express, implied or statutory warranty or condition.

Except to the extent prohibited by applicable law, any implied warranty or condition of merchantability or fitness for a particular purpose is limited in duration to the duration of the above warranty.

Sunbeam disclaims all other warranties, conditions or representations, express, implied, statutory or otherwise.

Sunbeam shall not be liable for any damages of any kind resulting from the purchase, use or misuse of, or inability to use the product including incidental, special, consequential or similar damages or loss of profits, or for any breach of contract, fundamental or otherwise, or for any claim brought against purchaser by any other party.

Some provinces, states or jurisdictions do not allow the exclusion or limitation of incidental or consequential damages or limitations on how long an implied warranty lasts, so the above limitations or exclusion may not apply to you.

This warranty gives you specific legal rights, and you may also have other rights that vary from province to province, state to state or jurisdiction to jurisdiction.

How To Obtain Warranty Service In the U.S.A.

If you have any question regarding this warranty or would like to obtain warranty service, please call 1-800-334-0759 and a convenient service center address will be provided to you.

PLEASE DO NOT RETURN THIS PRODUCT TO ANY OF THESE ADDRESSES OR TO THE PLACE OF PURCHASE.



Oster[®]

© 2021 Sunbeam Products, Inc. All rights reserved. Distributed by Sunbeam Products, Inc., Boca Raton, Florida 33431.

For product questions contact:
Sunbeam Consumer Service
USA : 1.800.334.0759

www.oster.com

Printed in China

P.N. NWL0001306795
GCDS-OST-SL

