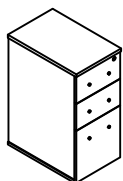


Congratulations on the purchase of your new *Signature Series* product

COMPONENTS

A BBF Pedestal-1pc



HARDWARE & TOOLS

K Wrench-1pc



C Screw Ø4 x 16mm-22pcs



D plastic rim Ø16 x15mm-2pcs



E Screw Ø5 x 20mm-2pcs



Tools Required for Assembly



Philips Screw Driver for

F Keys-1pc



G Caster with Lock-2pcs



H Caster with no Lock-2pcs



I Caster with no Lock-1pcs



C Screw Ø4 x 16mm

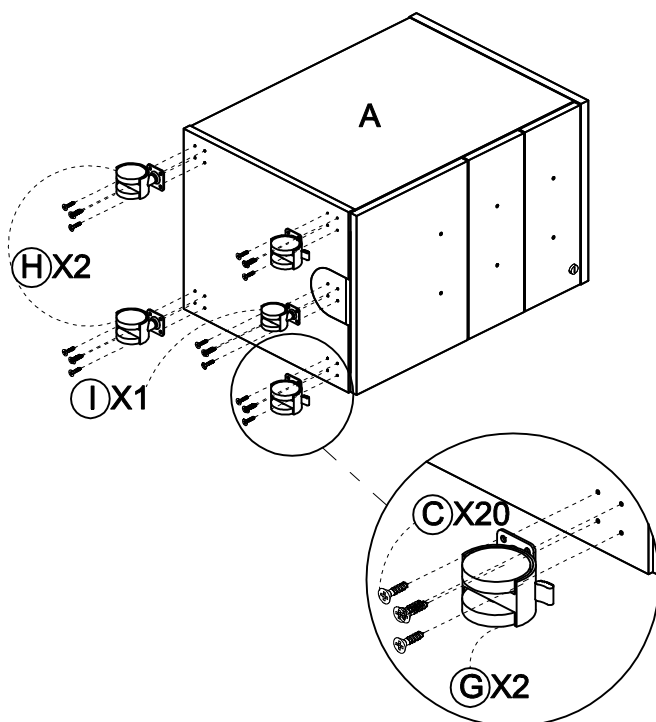
E Screw Ø4 x 25mm

INSTRUCTIONS - Do not use power tools to assemble

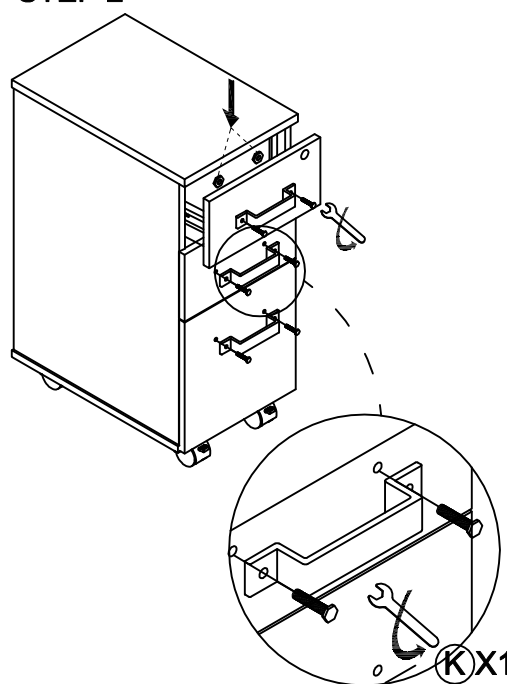
STEP 1

Note:

Install the handle from the inside of the drawer to the outside.



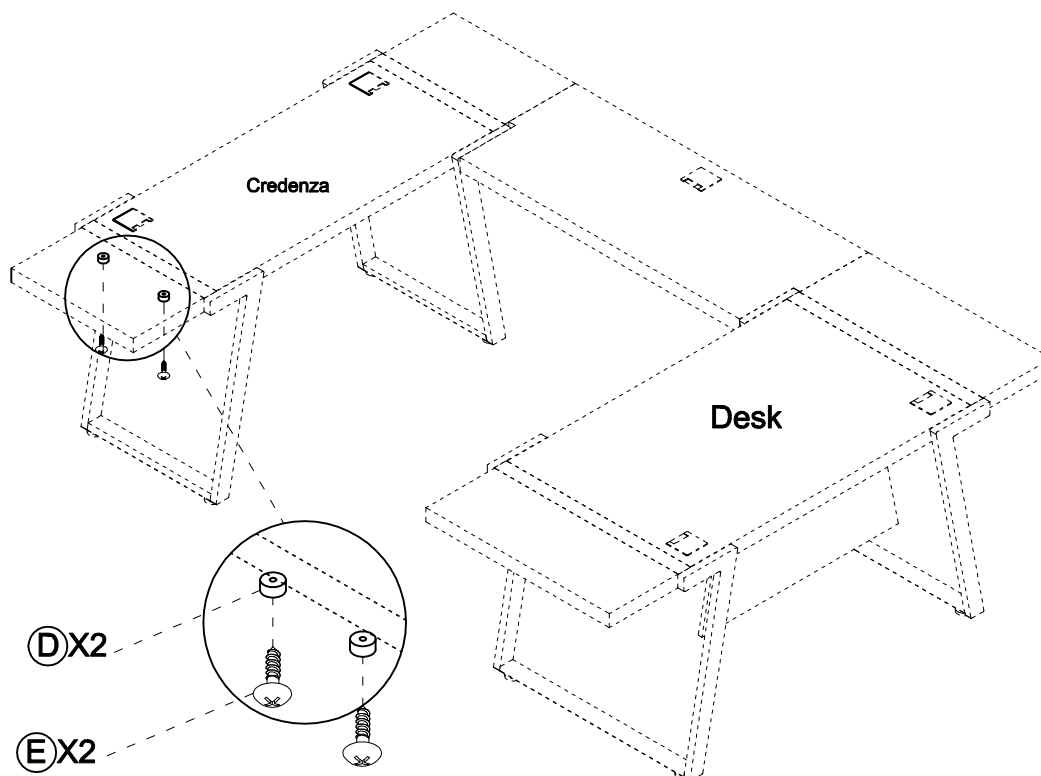
STEP 2



Congratulations on the purchase of your new *Signature Series* product

INSTRUCTIONS

STEP 3 Install Underside of Desk or Height Adjustable Desk or Credenza



COMPLETED

