

ATWORK Wall storage cabinet

with frosted glass doors Model# AW-50168N



800-558-1010
www.NBF.com

Identify all the components

A. Top - 1pc

B. Left side - 1pc

C. Right side - 1pc

D. Shelf - 1pc

E. Bottom - 1pc

F. Top trim - 1pc

G. Bottom trim - 2pcs

H. Back Panel - 1pc

I. Base Rail - 2pcs

J. Door - 2pcs

K. Adjustable Shelf - 1pc

Hardware identification

1. Cam lock - 16pcs

2. Cam bolt - 16pcs

3. Wood dowel - 29pcs

4. Screw - 24pcs

5. Hinge - 4pcs

6. Shelf support - 4pcs

7. Handle - 2pcs

8. Bolt - 4pcs

9. Screw - 2pcs

10. Adhesive cover - 16pcs

11. Adjustable glide - 4pcs

12. Stopper - 6pcs

Steps

Step 1

Attached bottom trim back (G) to Bottom board (E) and Base Rail (I) with wood dowel (3) and screws (9) supplied. Insert the wood dowels (3) into the holes on the Bottom trim (G).

Step 2

Attach the cam bolts (2) and wood dowels (3) panel (B) as illustrated. Insert cam locks (1) into panel (D) & (E) with arrows on cam locks facing the holes to the side of the panels. Make sure panels (D) & (E) have cam locks facing down. Attach the panels and secure the cam locks by turning clockwise. Cover the cam locks with adhesive covers (10). Attach top trim (F) to panel (B), make sure side with cam lock faces inward.

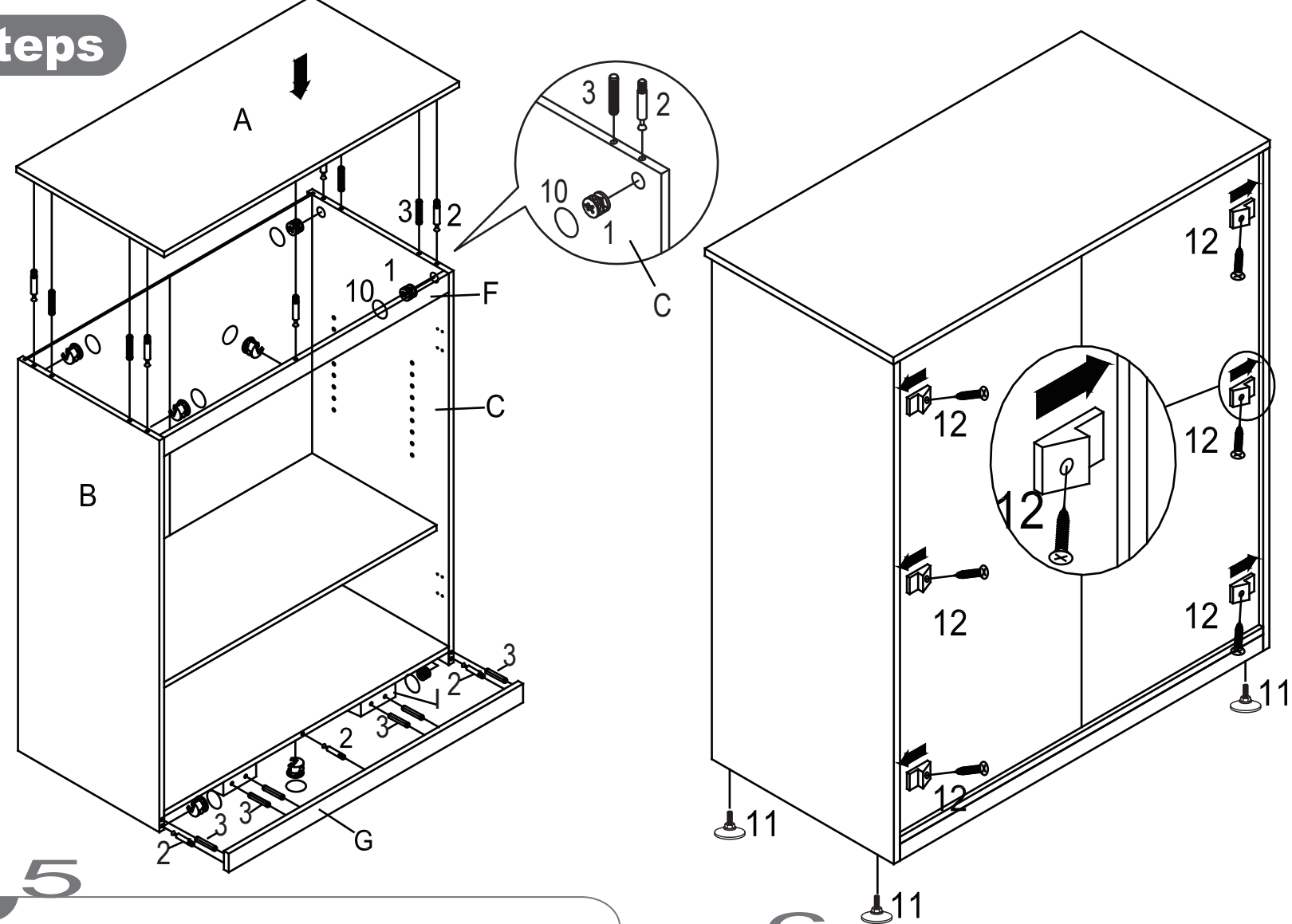
Step 3

Attach the cam bolts (2) and the wood dowels (3) on panels (C) in the areas illustrated. Then insert the cam locks (1) into panels (D) and (E) with the arrows on the cam locks facing the holes to the side of the panels (D & E). Attach the panels and secure the cam locks, turning clockwise to lock. Cover the cam locks with the adhesive covers (10).

Step 4

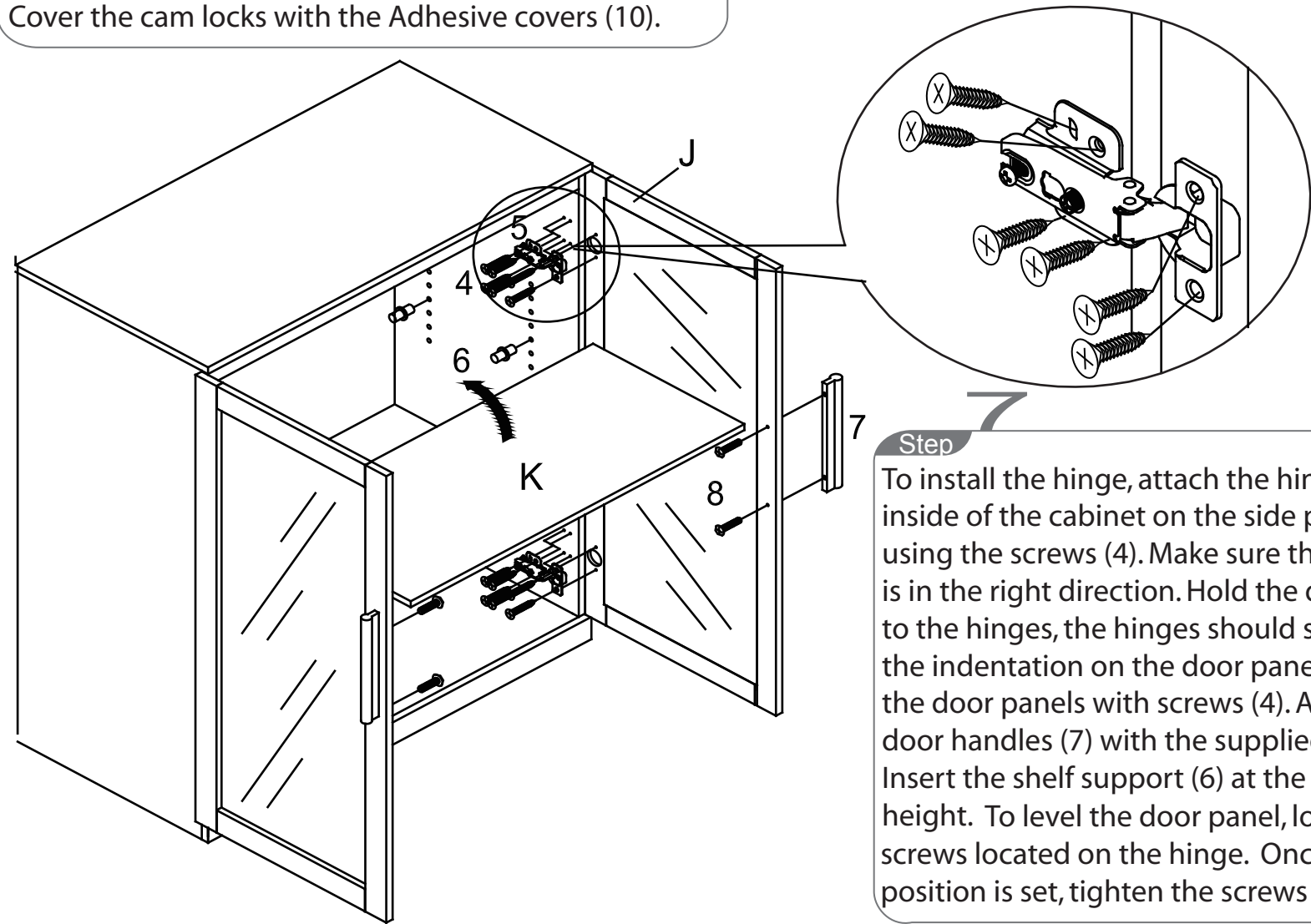
Slide Back Panel (H) top down. Please make sure that the panel is slid within the

Steps



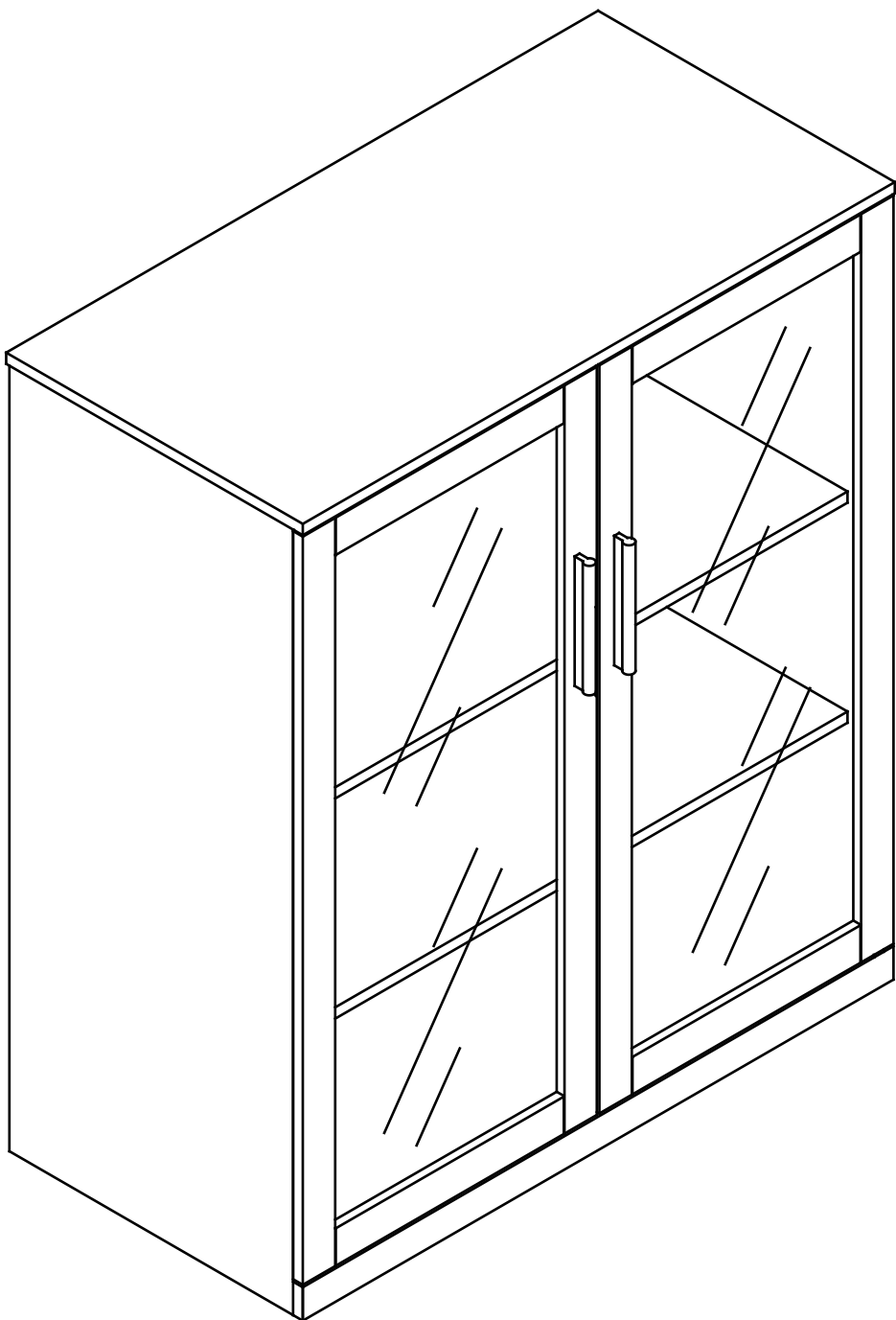
Step 5
Attach the cam bolts (2) and the wood dowels (3) on panels (A) and (G) & (I) in the areas illustrated. Then insert the cam locks (1) into panels (B) and (C) with the arrows on the cam lock facing the holes to the side of the panels. Attach the panels and secure the cam locks, turning clockwise to lock. Cover the cam locks with the Adhesive covers (10).

Step 6
To secure Back Panel (H), insert Stoppers (12) as illustrated. Insert screw supplied into the stopper and slowly tighten it. Attach adjustable glides (11) to the bottom of the cabinet.



Step 7
To install the hinge, attach the hinge to the inside of the cabinet on the side panels using the screws (4). Make sure the hinge is in the right direction. Hold the door up to the hinges, the hinges should slot into the indentation on the door panels. Secure the door panels with screws (4). Attach the door handles (7) with the supplied bolts (8). Insert the shelf support (6) at the desired height. To level the door panel, loosen 2 screws located on the hinge. Once desired position is set, tighten the screws to secure.

ATWORK Wall storage cabinet w/ frosted glass doors



Model# AW-50168N

Assembly
Instruction