










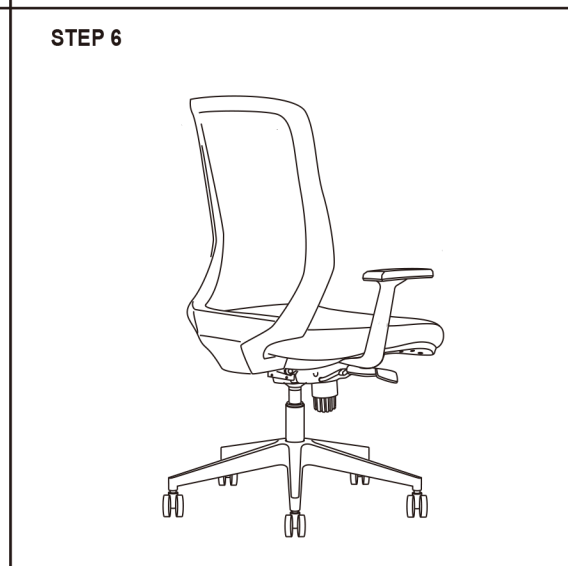
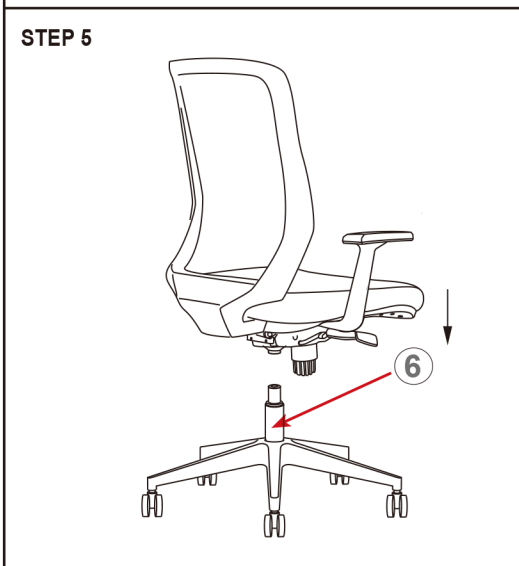
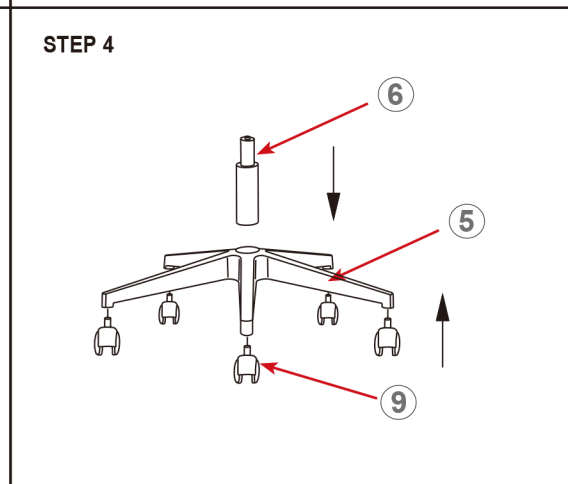
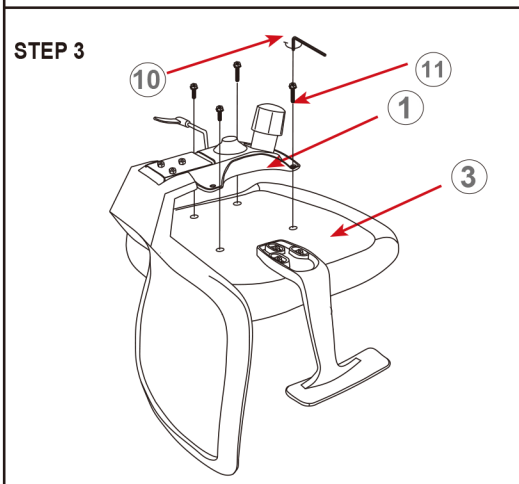
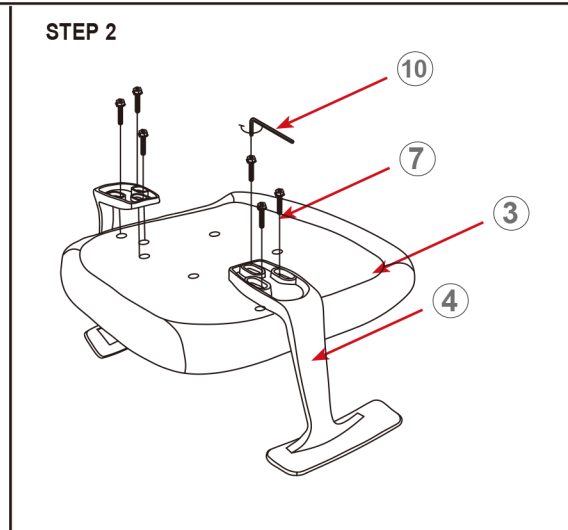
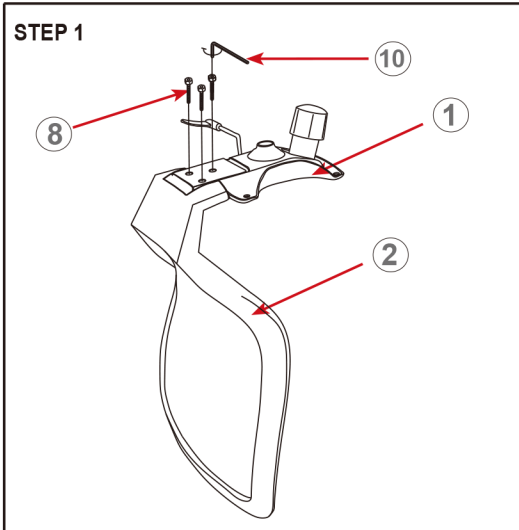


800-558-1010  
www.NBF.com

**Congratulations on the purchase of four new *Signature Series* chair!**

**PARTS** – remove all the parts from the carton and verify part quantities as indicated on this parts list.

①	
②	
③	
④	
⑤	
⑥	
⑦	 6DIA*L35mm
⑧	 8DIA*L 18mm
⑨	
⑩	
⑪	 6DIA*L 20mm



**IMPORTANT:** This chair is to be used by one person at a time. Be sure all screws are securely tightened. Save the wrench and periodically tighten the screws. Do not lean the chair back on 2 wheels or use the chair as a stepladder. Use this chair for its intended purpose only.

CUSTOMER SERVICE HOTLINE  
800-626-6060