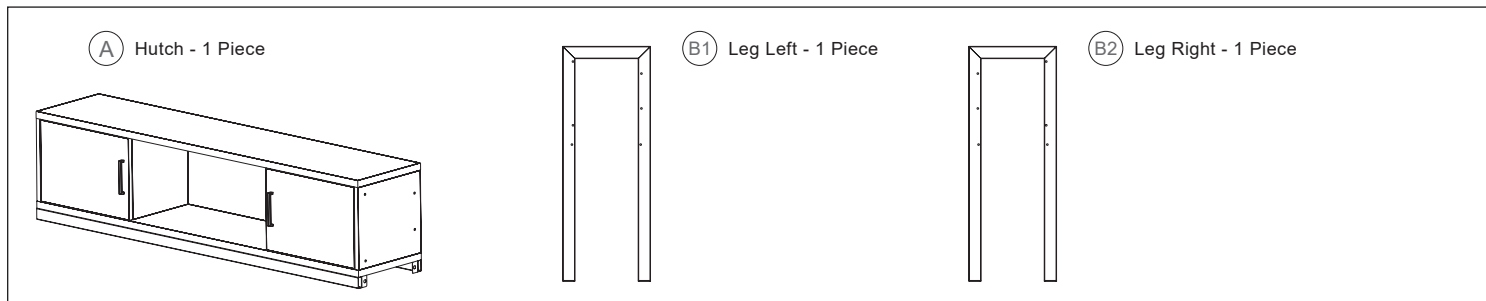
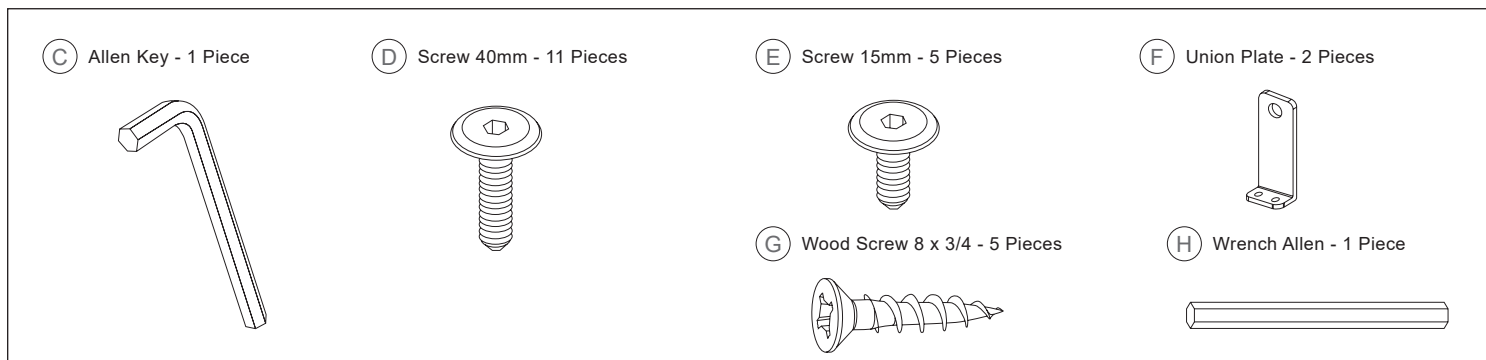


Congratulations on the purchase of your new *Signature Series* product!

COMPONENTS

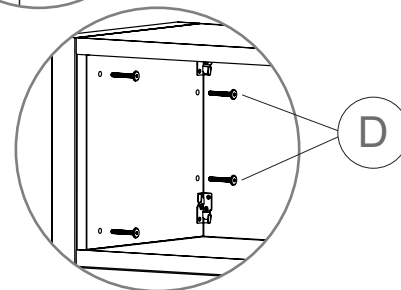
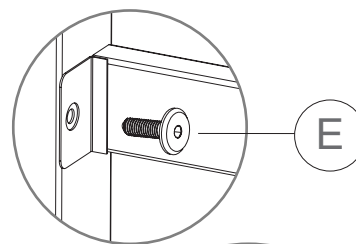
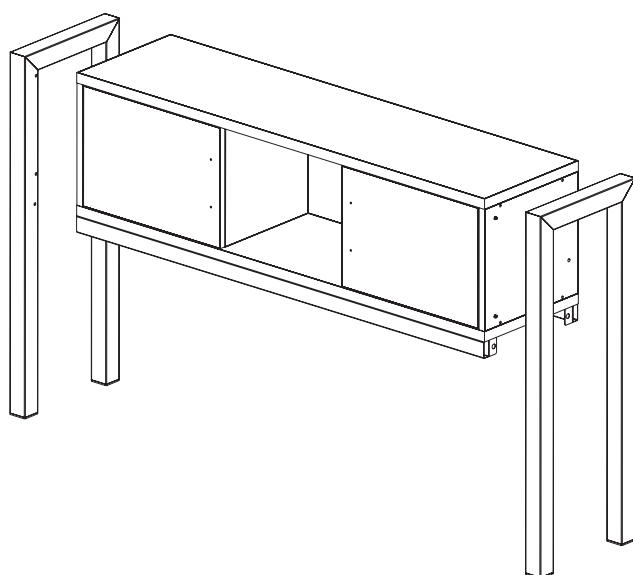


HARDWARE & TOOLS



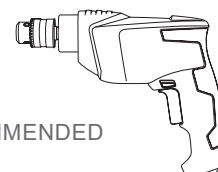
INSTRUCTIONS

STEP 1



Position the Hutch (A) between Legs (B1) & (B2) and secure with Screws (D) & (E) using the Allen Key (C).

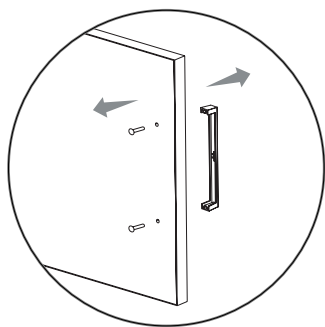
DRILL RECOMMENDED



Congratulations on the purchase of your new *Signature Series* product!

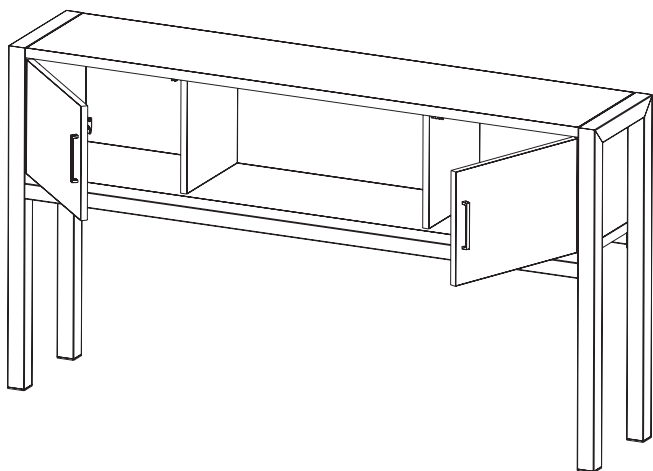
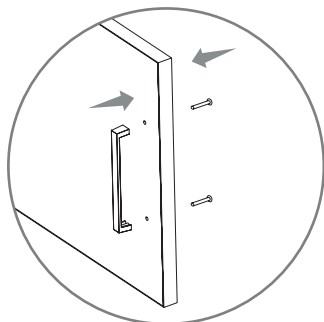
INSTRUCTIONS

STEP 2

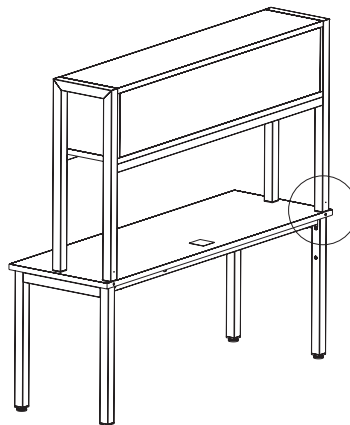
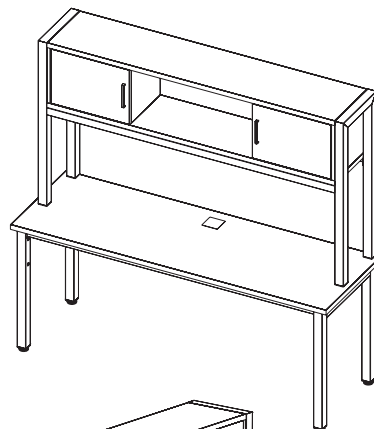


Remove the handles located inside the left and right door.

Install handles on the Hutch doors in the front



STEP 3



***Note:** Use the Union Plate (F) and Screws (E & G) attach Hutch to Credenza.

