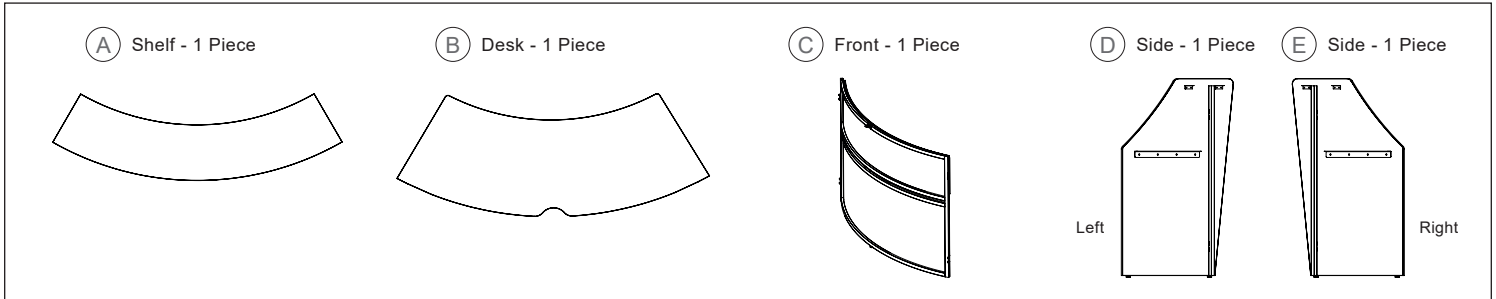
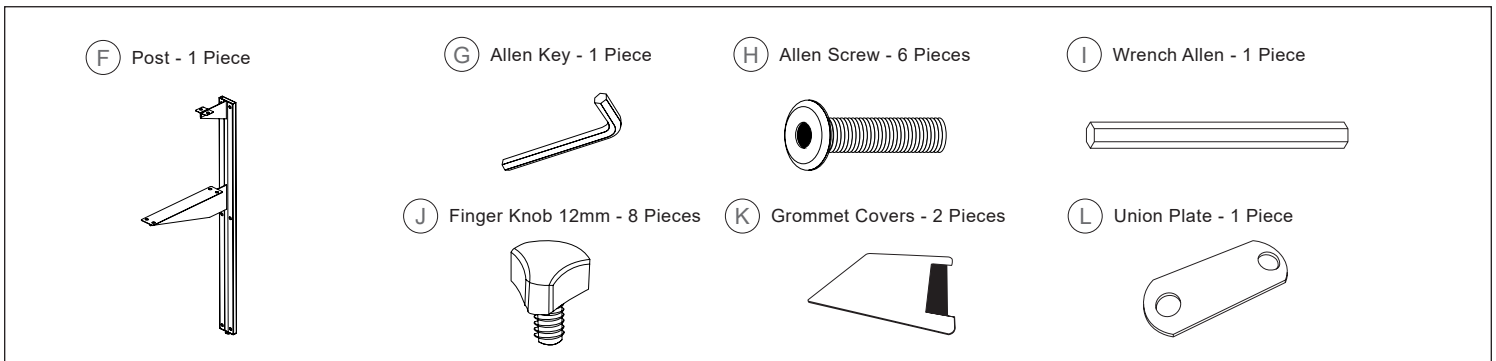


Congratulations on the purchase of your new *Signature Series* product!

COMPONENTS



HARDWARE & TOOLS

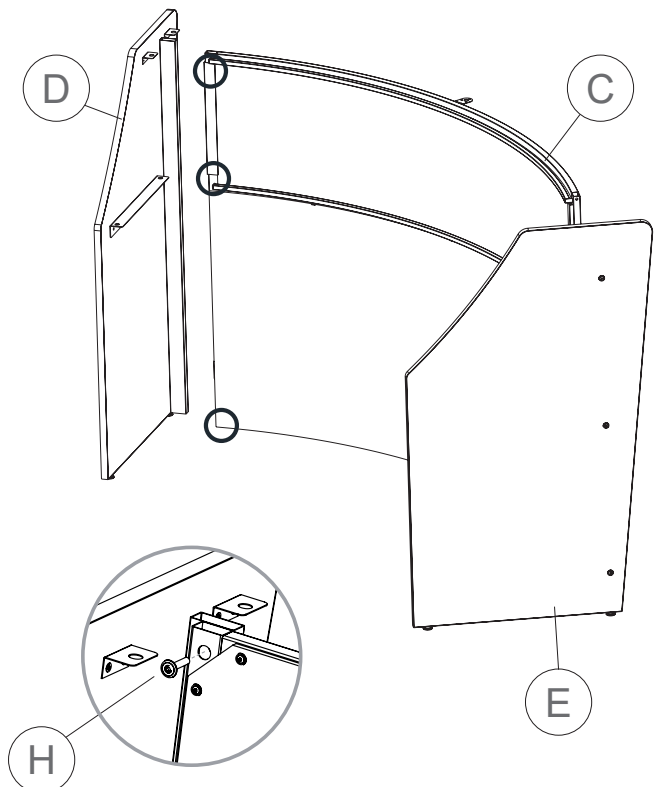
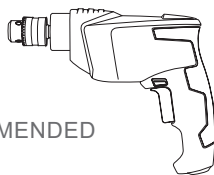


INSTRUCTIONS

STEP 1

Assemble the left side panel (D) and the right side panel (E) with the front panel (C) using the Allen screws (H) in upper corner, middle and bottom corner of the front panel (C).

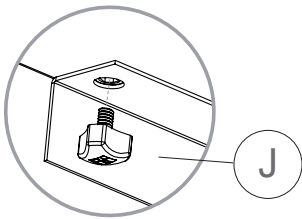
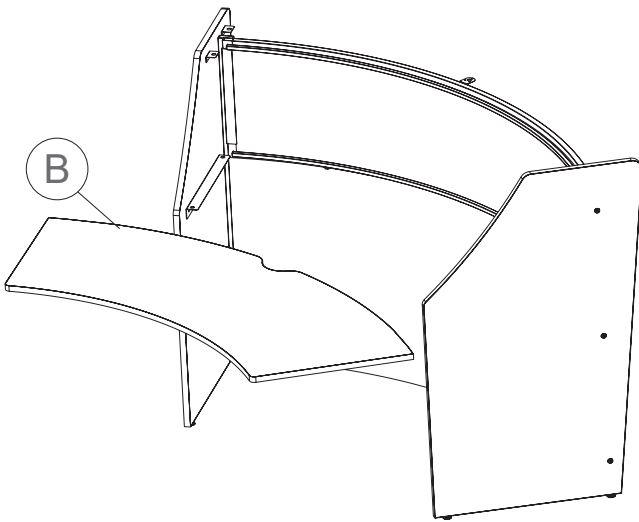
DRILL RECOMMENDED



Congratulations on the purchase of your new *Signature Series* product!

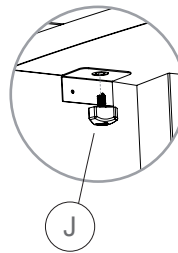
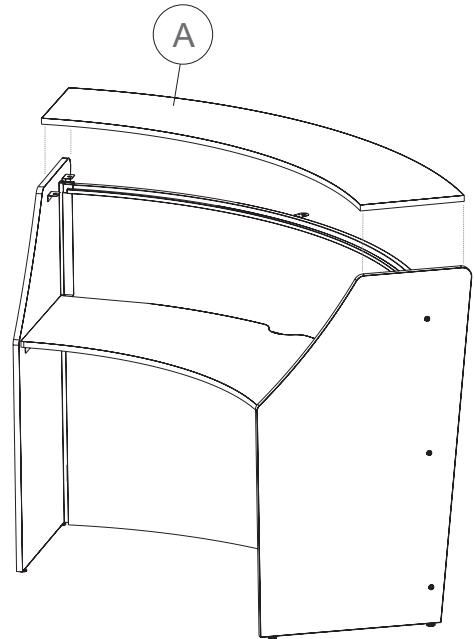
INSTRUCTIONS

STEP 2



Place the desk (B) and secure with the side panels (D) & (E) using four Finger Knobs (J) on the slots underneath the desk.

STEP 3



Place the shelf (A) on the top of the side panels (D) & (E) and the front curved panel (C) using four Finger Knobs (J) on the slots underneath the shelf.