

BHP-3BAR Behavioral Health Specific Recliner Specifications



Bariatric 29" Wide Seat
Standard 24" Wide Seat

Model # BHP-3BAR

Dimensions:

- Width Overall - 37"
- Depth Overall - 36"
- Height Overall - 48"
- Seat Height - 20.75"
- Arm Height - 27.5"
- Seat Width - 29"
- Seat Depth - 22"
- Lay Flat - 72" Long

Unit Weight - 200 lbs.

COM Yardage - 8 yds

Weight Rating - 750 lbs.

Warranty - 5 Years

Made in the USA

Fully Concealed Hardware & Mechanical Components

Absent of Any Handles or Finger Pull Loops

Reinforced Stitching on all Upholstery

750 lb. Weight Capacity

Multi Position Footrest

Lay Flat Design

Recliner Weighs 200 lbs. for Safety

Solid Surface Arm Caps

Standard Size Version Available

Details:

Finishes - Grade A Stinson Core Vinyl as Standard (COM available option)

Options:

- Staff Only Lock Box to Lock all 4 casters
- Standard Casters with Foot Lock (No Lock Box)
- Stationary Recliner - No Casters
- Arm Caps come Standard - Option for no Arm Caps

Assembly - None Required

Maintenance and Cleaning - See Document

Hardware - Tamper Resistant Pin in Head Torx



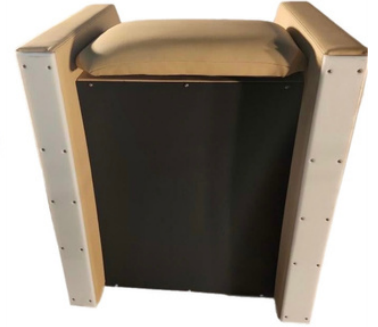
BHP-3BAR Behavioral Health Specific Recliner Features & Options



Standard Version Available



Standard Locking Casters Available - No Lock Box



Stationary Recliner Available - No Casters All Hardware Tamper Resistant and Counter Sunk



EASILY OPERATE BACKREST & FOOTREST WITH THE PUSH OF A BUTTON NO HANDLES



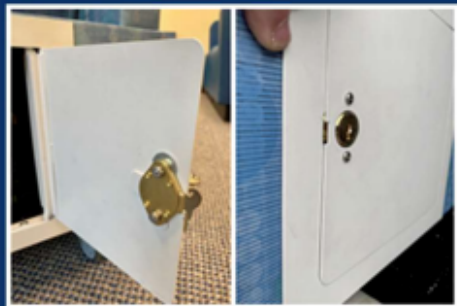
BACK SEALED TO LIMIT ACCESS TO COMPONENTS LOCK BOX AVAILABLE ON BACK OR SIDE OF RECLINER



LOCK AND UNLOCK ALL FOUR CASTERS WITH CONCEALED LEVER



UNDERSIDE OF FOOTREST COMPLETELY SEALED



COMPONENTS & CASTER LEVER ONLY ACCESSIBLE THROUGH SECURE LOCK BOX



WIDE RANGE OF SITTING & LAYING POSITIONS WITH INDEPENDENT CONTROLS FOR FOOTREST & BACKREST



BOTTOM OF CHAIR COMPLETELY SEALED AND SECURED



Phone

336-884-0046



Website

www.hcfbysolace.com



Email

Sales@hcfbysolace.com