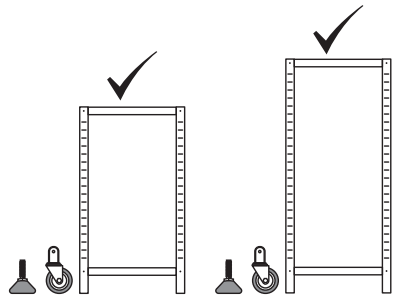
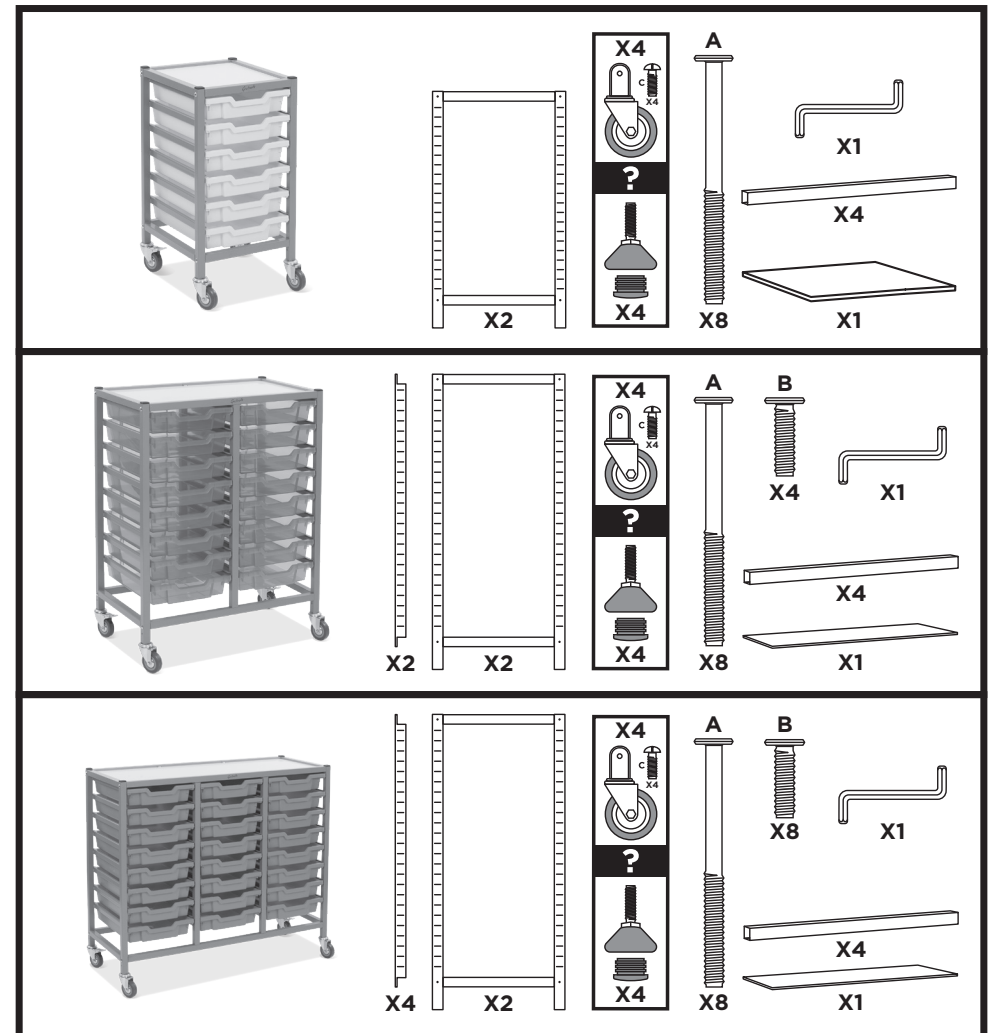
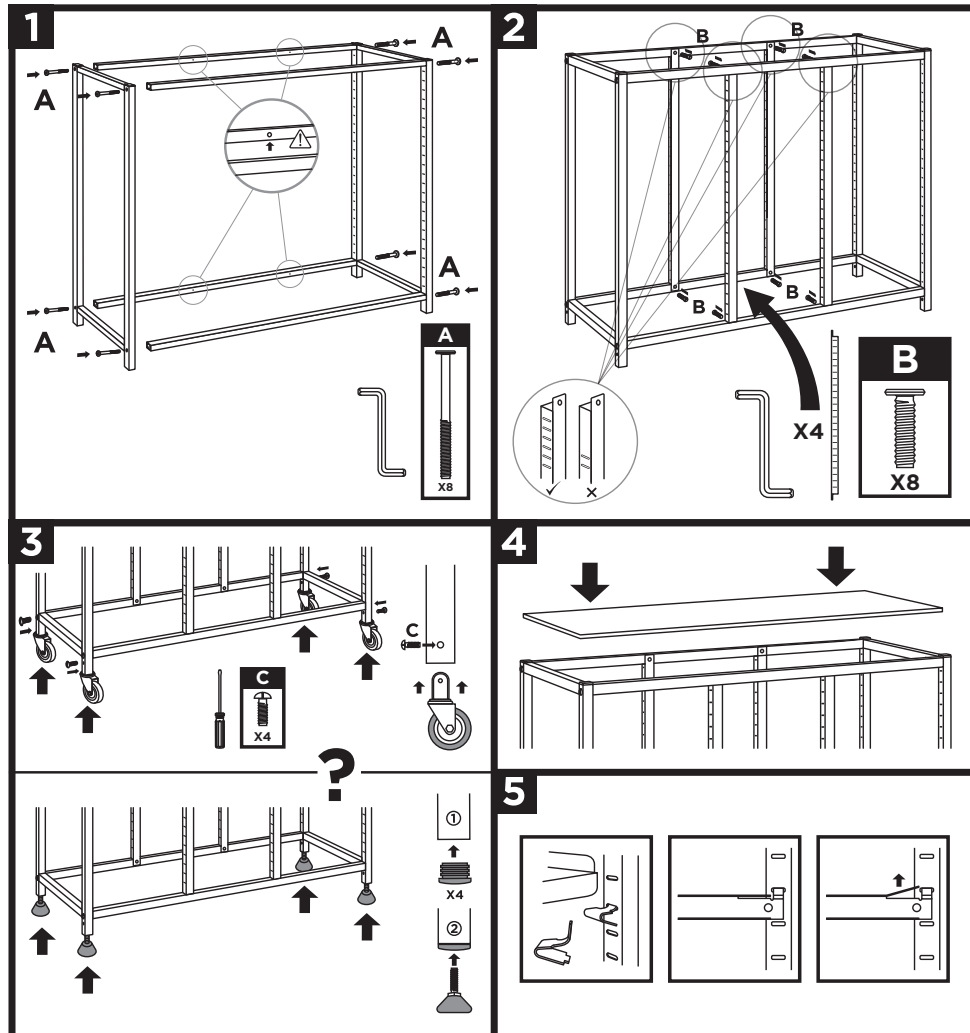
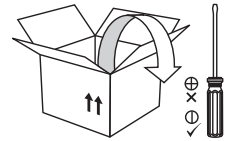


Treble Column



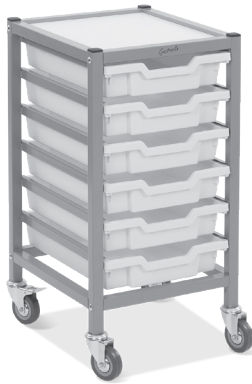
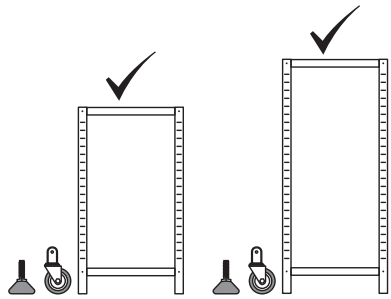
www.gratnells.com

Standard Frames & Trolleys

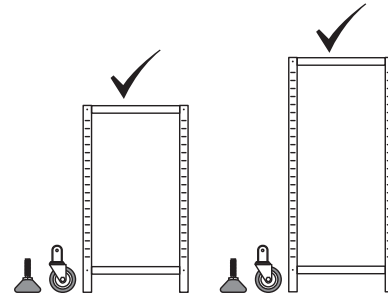


*Frames supplied without tops.

Single Column



Double Column



1

2

3

4

Assembly instructions for the single column cart, showing four steps: 1. Assembling the main frame with screws labeled 'A'. 2. Attaching casters to the bottom rail using screws labeled '1' and '2'. 3. Attaching casters to the front rail using screws labeled 'C'. 4. Attaching the top tray to the frame.

1

2

3

4

Assembly instructions for the double column cart, showing four steps: 1. Assembling the main frame with screws labeled 'A'. 2. Attaching casters to the bottom rail using screws labeled '1' and '2'. 3. Attaching casters to the front rail using screws labeled 'C'. 4. Attaching the top tray to the frame.