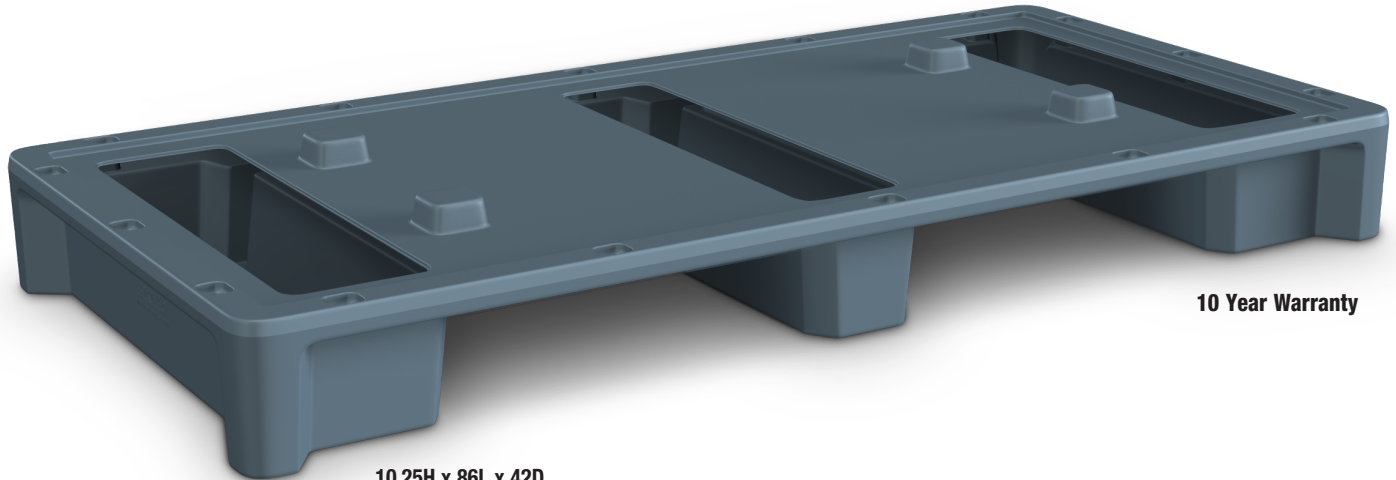
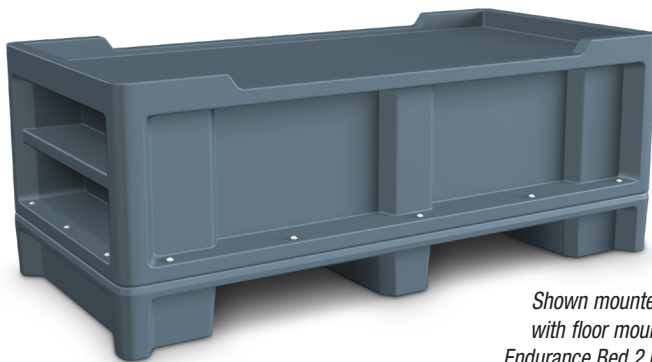


# The Endurance Bed Riser




**10 Year Warranty**

**10.25H x 86L x 42D**



*Shown mounted  
with floor mount  
Endurance Bed 2.0.*

## FEATURES:

- Designed for use with The Endurance Bed 2.0. It bolts into it through existing mounting holes.
- Can be weighed down with sand bags on site.
- Durable, one piece, rotationally molded design for increased strength. Constructed of high impact "no break" polyethylene.
- Can be bolted to the floor via concealed pilot holes with hardware of your choice.
- Stain resistant.
- Easy to clean and maintain.
- Flame Retardant (passes Cal 133). Test reports available upon request.
- Manufactured to ISO Quality Standards in the USA. 

## QUICK SPECS

- 42"D x 86"L x 10.25"H
- Designed for use with The Endurance Bed 2.0 / Riser bolts into bed through existing mounting holes
- Can be weighed down with sand bags on site
- One piece rotationally polyethylene material
- Can be bolted to the floor with concealed mounting holes
- Flame Retardant (passes Cal 133) / No foam
- Virtually unbreakable / 10 year warranty / Stain resistant
- Owner specified color from 7 standard options

ITEM	DESCRIPTION
7606BK	Black FR
7606BG	Blue Gray FR
7606BN	Brown FR
7606GN	Green FR
7606GY	Gray FR
7606SB	Slate Blue FR
7606SD	Sand FR

Available in



Custom colors available upon request. Call Cortech for details.

**Ideal For Use In: Correctional Facilities, Behavioral/Mental Health Facilities & Law Enforcement/Security.**

Our Intense Use and Correctional Specific products contribute to a safe and humane environment.  
For Full Specifications Call Toll Free 800-571-0770 / Fax: 630-455-0813 / or Visit [www.cortechusa.com](http://www.cortechusa.com)

### OVERVIEW

The Endurance Bed Riser is designed to be combined with the Endurance 2.0 Bed for increased bed height for easier patient care, easier patient entry and exit, as well as allowing for mechanical lift device use. **Manufactured to ISO Quality Standards in the USA.**

**Designed for use with the Endurance Bed 2.0.**

### FABRICATION/MATERIAL

Durable, one piece, rotationally molded design for increased strength. Constructed of high impact polyethylene. No steel or wood components. Flame Retardant (as shown passes Cal 133). Test reports available upon request.

**COLOR** See Chart, custom colors available upon request.

**WEIGHT** 70 lbs.

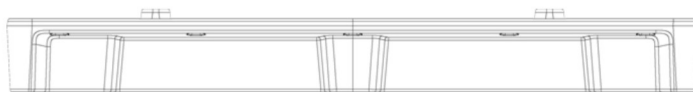
**OPTIONS** Can be easily filled with sand through ballast door on site to weigh down.

**ASSEMBLY** Bolt to the floor via concealed pilot holes with hardware of your choice.

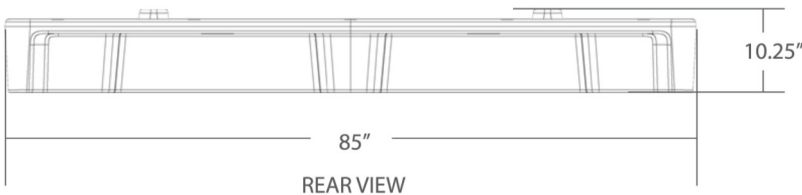
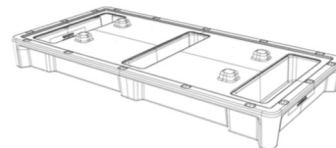
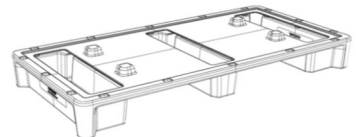
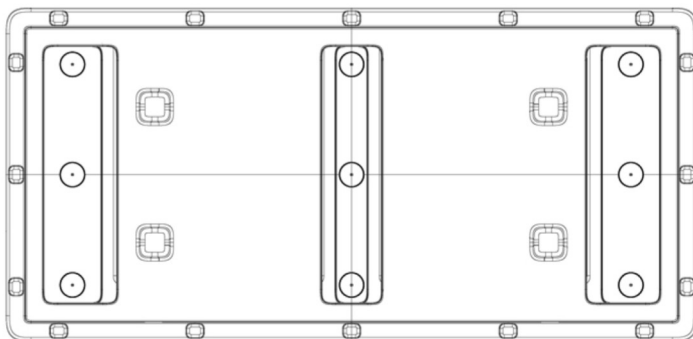
**WARRANTY** 10 Year Warranty.

**MAINTENANCE** Easy to clean and maintain with damp cloth. Resistant to stains.

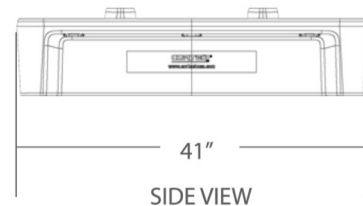
FRONT VIEW



TOP VIEW



REAR VIEW



SIDE VIEW