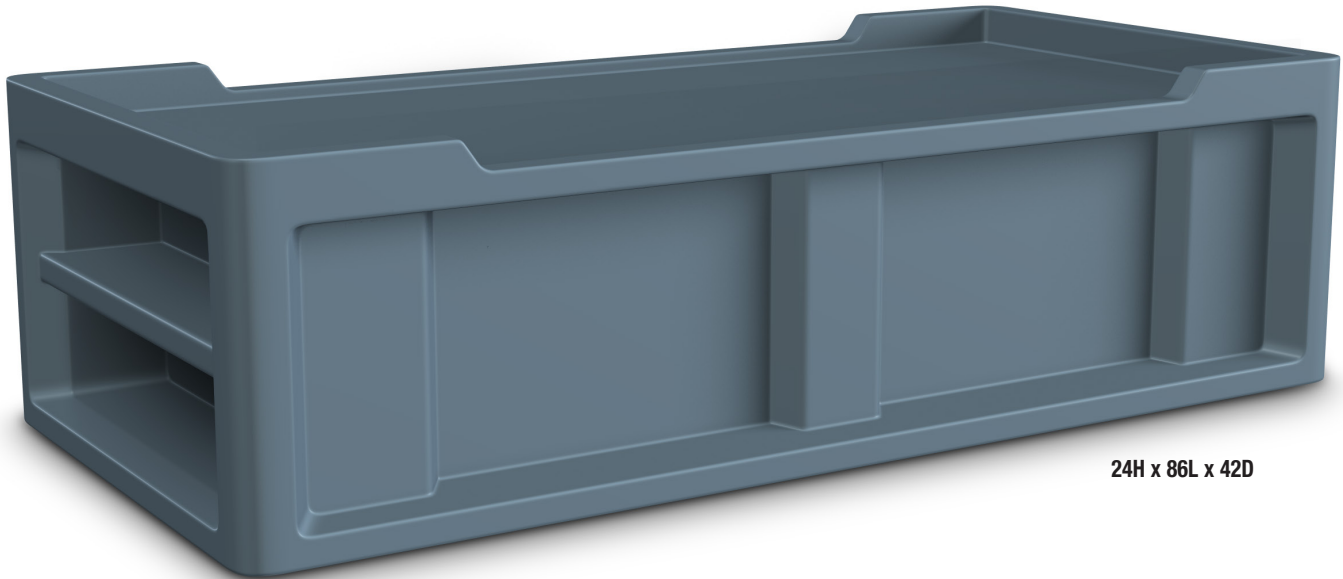
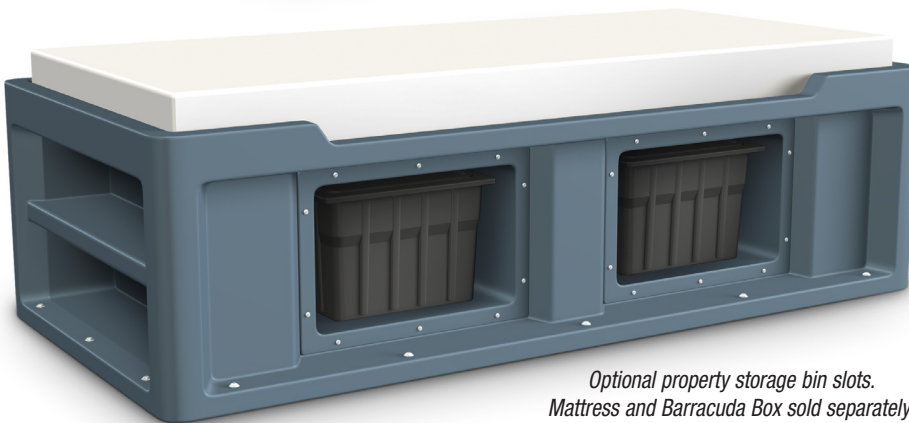


The Endurance Bed 2.0




24H x 86L x 42D



*Optional property storage bin slots.
Mattress and Barracuda Box sold separately.*

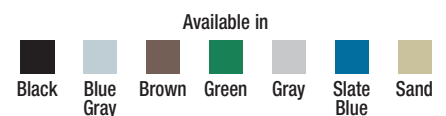
FEATURES:

- Designed for use with **36" x 80"** mattress.
- Angled lowered side rail for easier entry and exit.
- Molded in end shelving for open storage of personal items.
- Easy to clean and maintain.
- Stain resistant.
- Durable, one piece, rotationally molded design for increased strength. Constructed of high impact "no break" polyethylene.
- Can be bolted to the floor via concealed pilot holes with hardware of your choice.
- Field installed restraint rings available.
- Optional side slots for property box storage.
- Flame Retardant (passes Cal 133). Test reports available upon request.
- Manufactured to ISO Quality Standards in the USA. 

QUICK SPECS

- Size: 42"D x 86"W x 24"H - Bed Deck 36" x 80"
- One piece rotationally anti-ligature molded polyethylene bed
- Can be bolted to the floor with concealed mounting holes
- Flame Retardant (passes Cal 133) / No foam
- Virtually unbreakable / 10 year warranty / Stain resistant
- Owner specified color from 7 standard options

ITEM	DESCRIPTION
7801BK	Black FR
7801BG	Blue Gray FR
7801BN	Brown FR
7801GN	Green FR
7801GY	Gray FR
7801SB	Slate Blue FR
7801SD	Sand FR



Custom colors available upon request. Call Cortech for details.

Ideal For Use In: Correctional Facilities, Behavioral/Mental Health Facilities & Law Enforcement/Security.

Our Intense Use and Correctional Specific products contribute to a safe and humane environment.
For Full Specifications Call Toll Free 800-571-0770 / Fax: 630-455-0813 / or Visit www.cortechusa.com

OVERVIEW

The Endurance Bed 2.0 is a versatile, heavy duty sleep surface and is ideal for continuous, intensive use in correctional or institutional environments. Optional molded in side slots for property box storage and increased structural span strength. Angled lowered side rail for easier entry and exit. Molded in end shelving for open storage of personal items. **Manufactured to ISO Quality Standards in the USA.**

Designed for use with 36" x 80" mattress.

FABRICATION/MATERIAL

Durable, one piece, rotationally molded design for increased strength. Constructed of high impact polyethylene. No steel or wood components. Flame Retardant (as shown passes Cal 133). Test reports available upon request.

COLOR See Chart, custom colors available upon request.

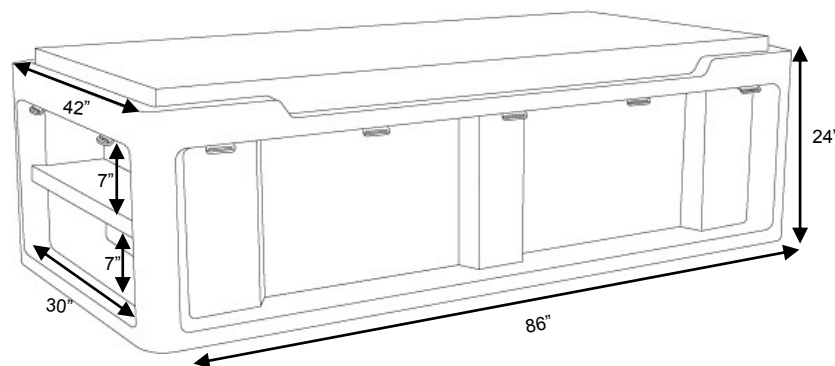
WEIGHT 145 lbs.

OPTIONS N/A

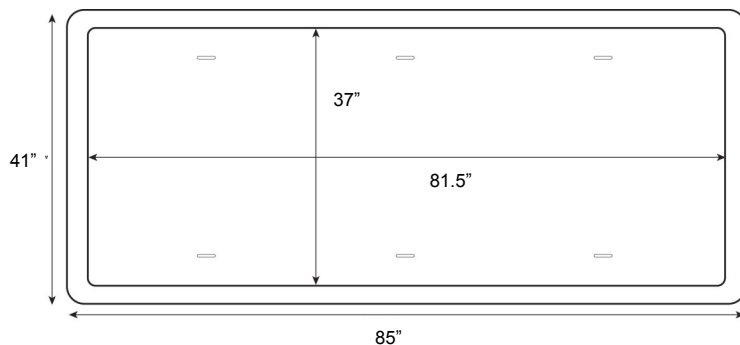
ASSEMBLY Bolt to the floor via concealed pilot holes with hardware of your choice.

WARRANTY 10 Year Warranty.

MAINTENANCE Easy to clean and maintain with damp cloth. Resistant to stains.



TOP



OPTIONAL PROPERTY BOX SIDE

