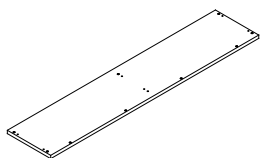


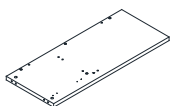
**Congratulations on the purchase of your new *Signature Series* product!**

## COMPONENTS

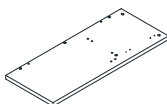
(A) Top -1pc



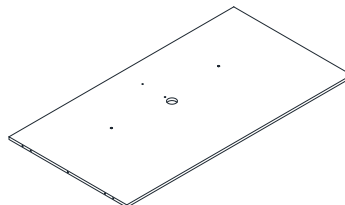
(B) Left side panel -1pc



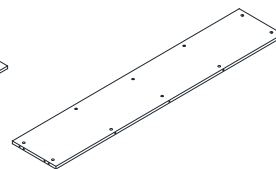
(C) Right side panel -1pc



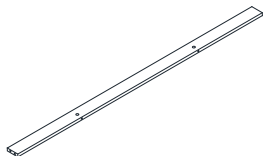
(D) Back panel with tackboard -1pc



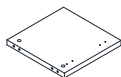
(E) Bottom- 1pc



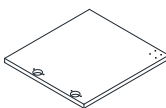
(F) Support bar - 1pc



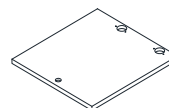
(G) Center panel- 1pc



(H) Left door panel -2pcs



(I) Right door panel -2pcs



## HARDWARE & TOOLS

(J) Cam bolt - 24pcs



(K) Cam lock - 24pcs



(L) Wood dowel - 20pcs



(M) Screw M4\*16- 48pcs

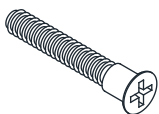


### Tools Required for Assembly



**Phillips Screw Driver**

(N) Screw M7\*50 - 2pcs



(O) Camlock cap - 18 pcs



(P) Deep camlock cap-6 pcs



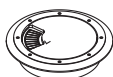
(Q) Side Door hinge - 4pcs



(R) Center door hinge - 4pcs



(S) Grommet - 1pc



(T) Door bumper - 4pcs



(U) Double-sided EVA tape - 2pcs



(V) Door Latch - 2pcs



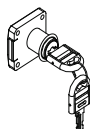
(W) Lock catch - 2pcs



(X) Screw M3.5\*16- 12pcs



(Y) Lockset- 2sets

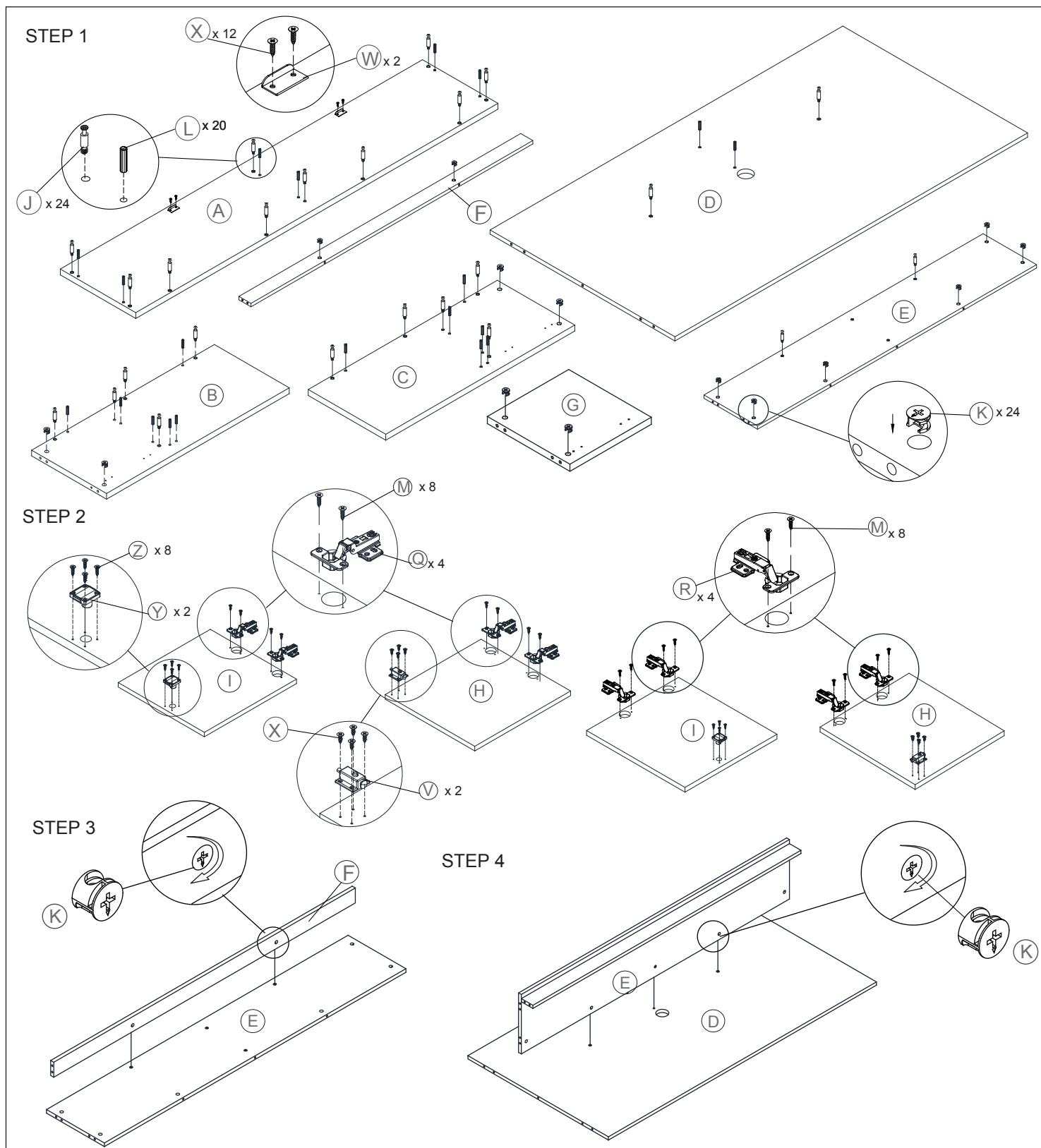


(Z) Screw M3.5\*20- 8pcs



**Congratulations on the purchase of your new *Signature Series* product!**

INSTRUCTIONS

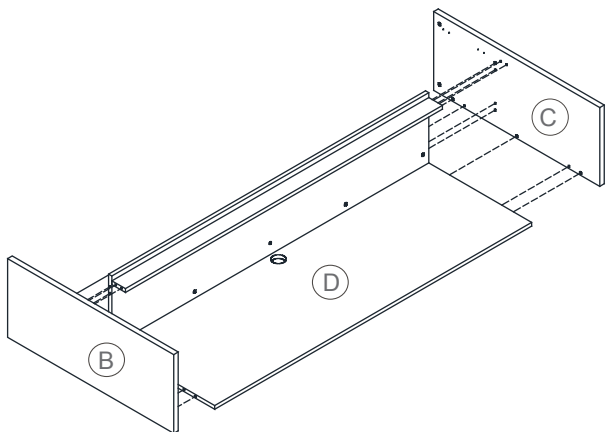


# 71" Hutch with Laminate Doors ASSEMBLY INSTRUCTIONS

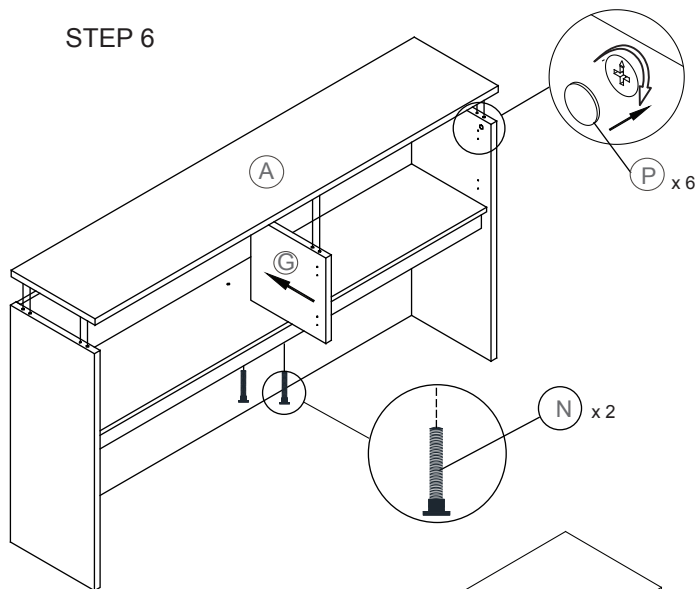
**Congratulations on the purchase of your new *Signature Series* product!**

## INSTRUCTIONS

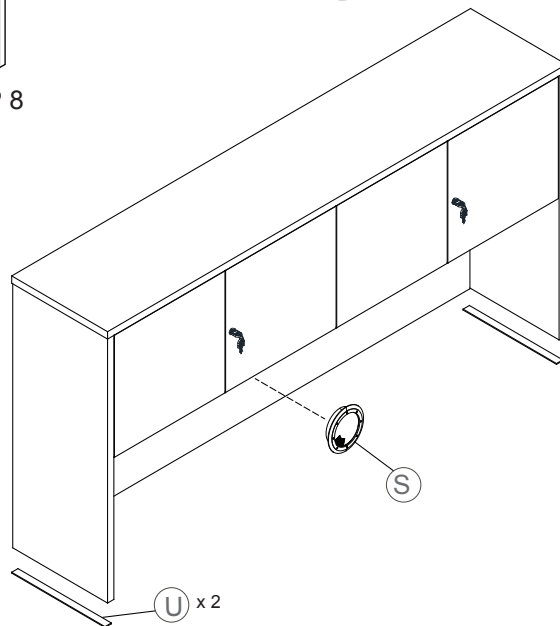
### STEP 5



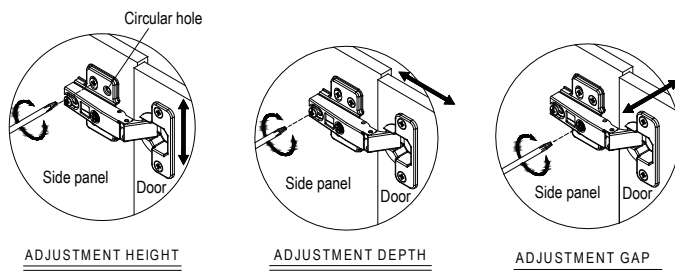
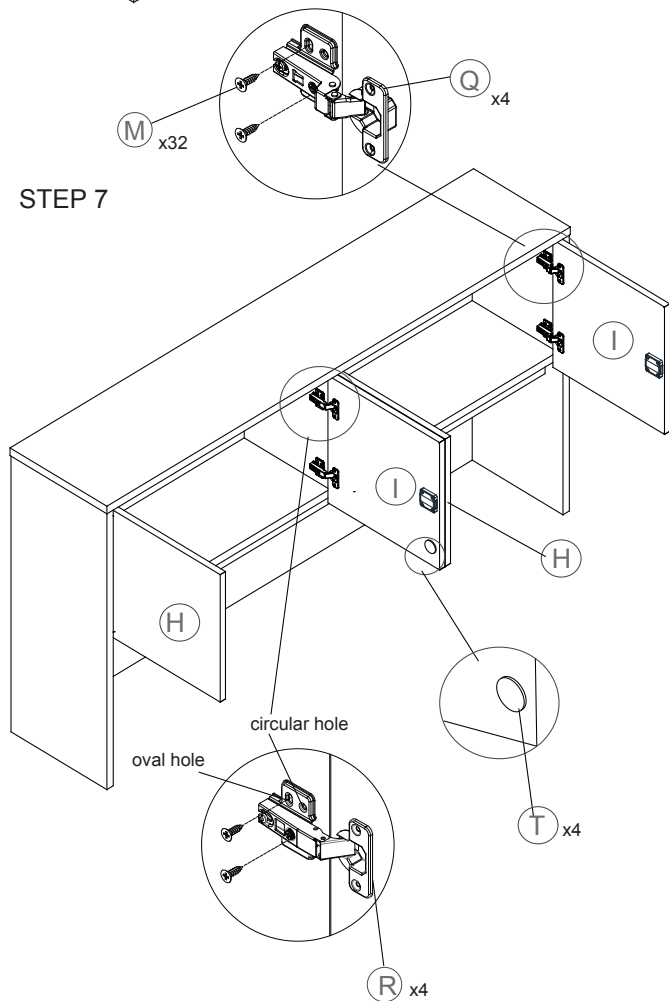
### STEP 6



### STEP 8



### STEP 7



ADJUSTMENT HEIGHT

ADJUSTMENT DEPTH

ADJUSTMENT GAP

Once height adjustment is complete, insert screw (M) into the circular hole to attach the hinge.