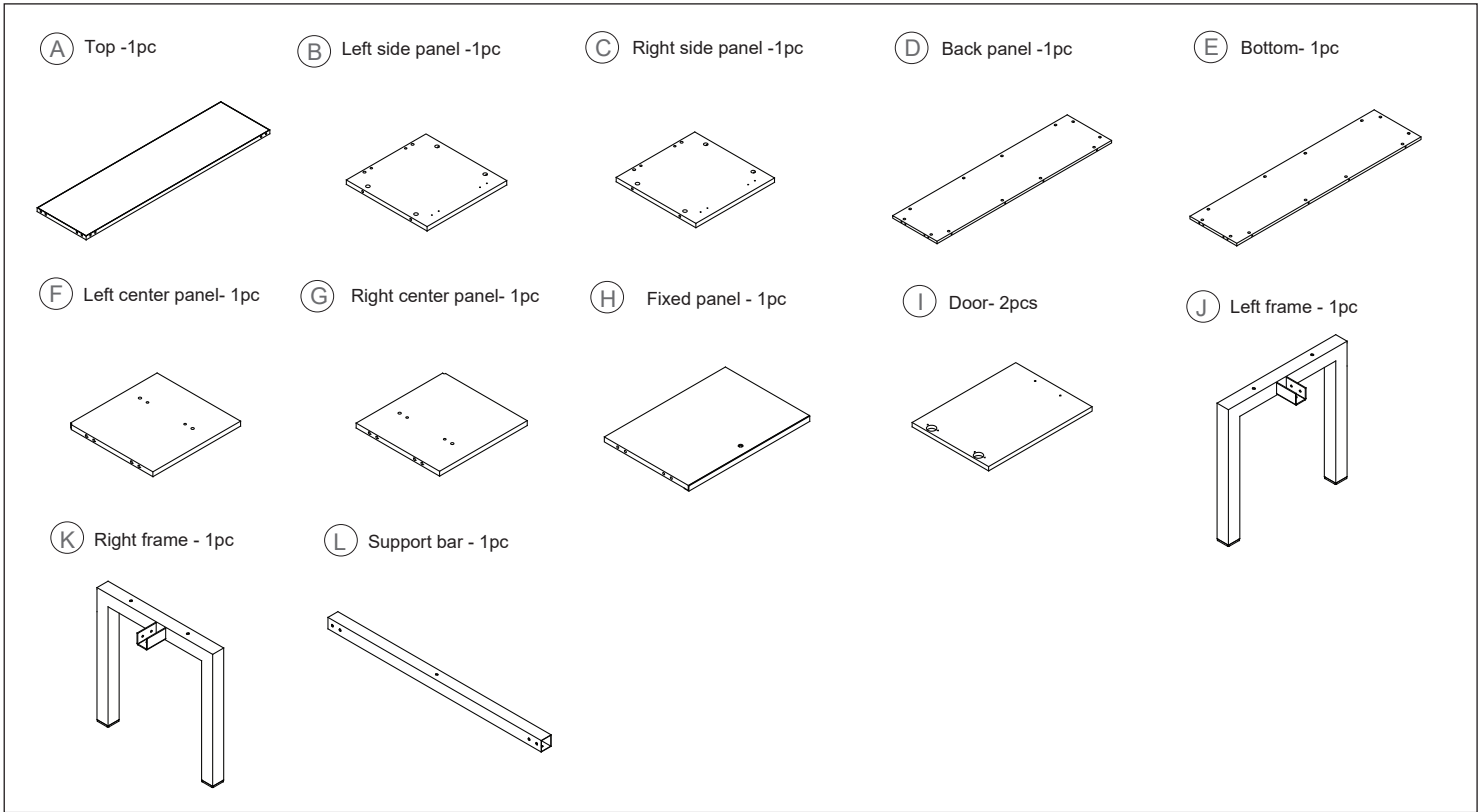




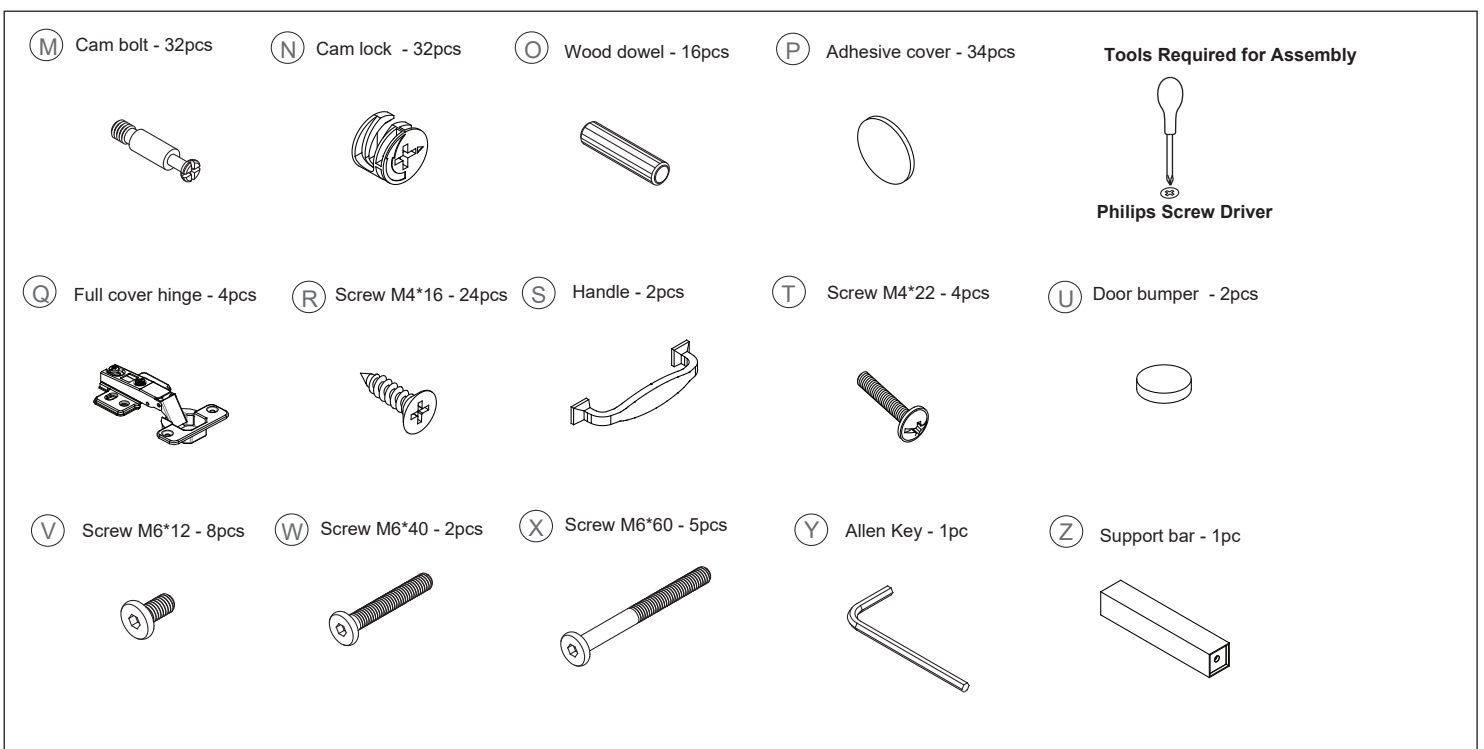
Rivet- 60/72" Hutch

Assembly Instructions

COMPONENTS



HARDWARE & TOOLS



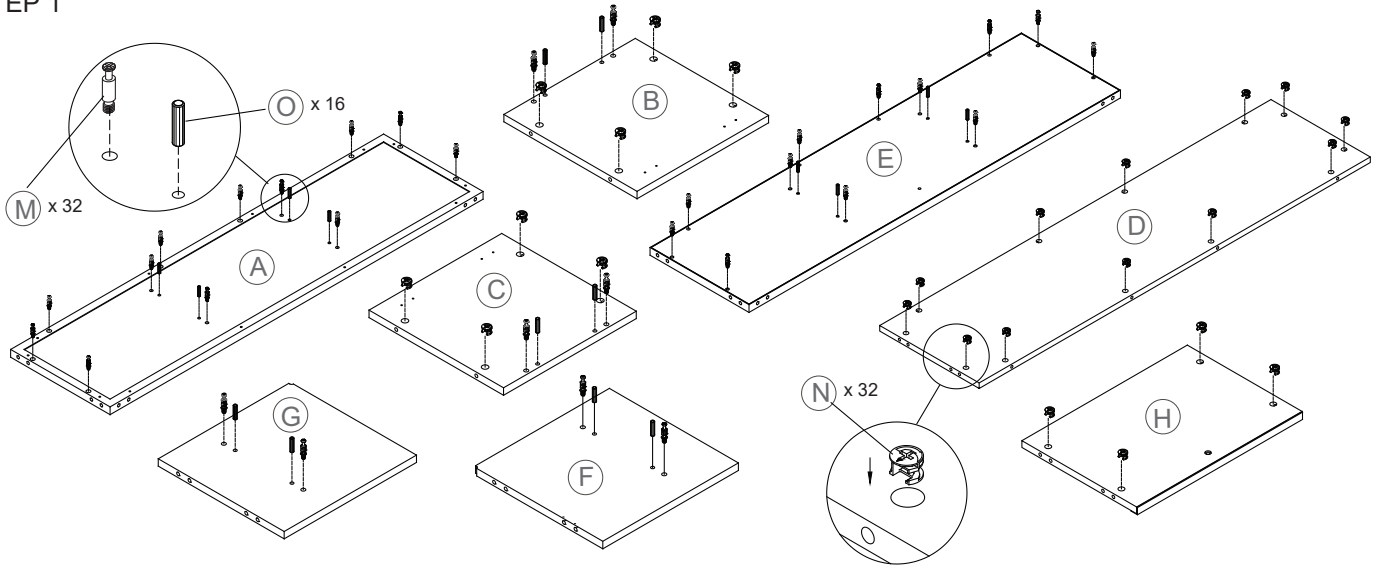


Rivet- 60/72" Hutch

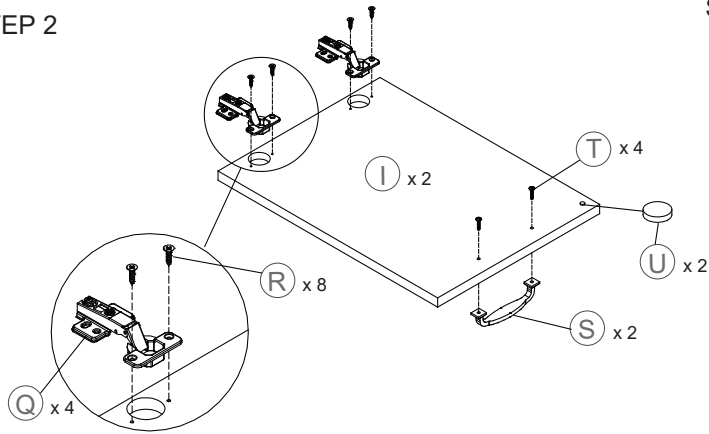
Assembly Instructions

INSTRUCTIONS

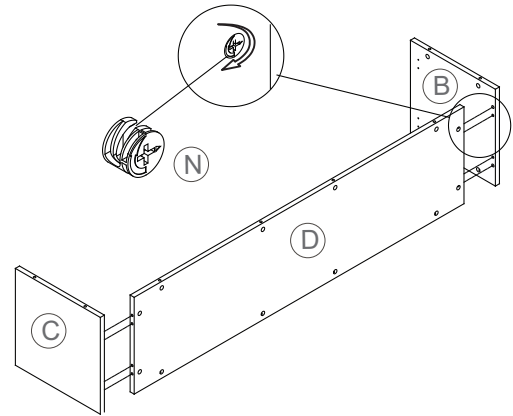
STEP 1



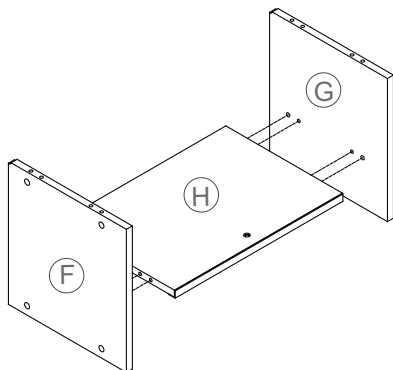
STEP 2



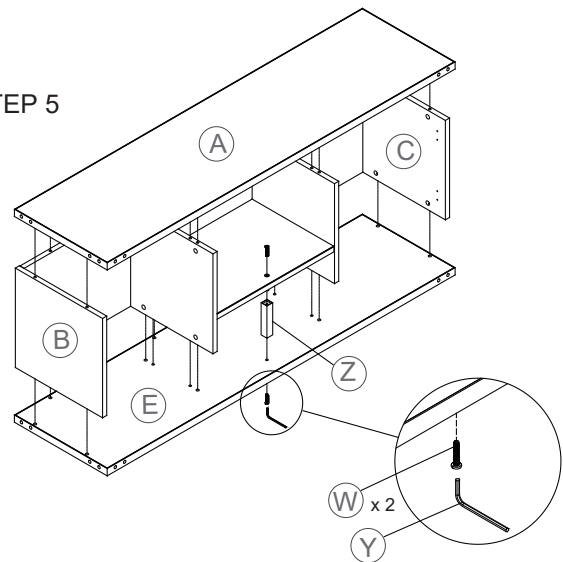
STEP 3



STEP 4



STEP 5



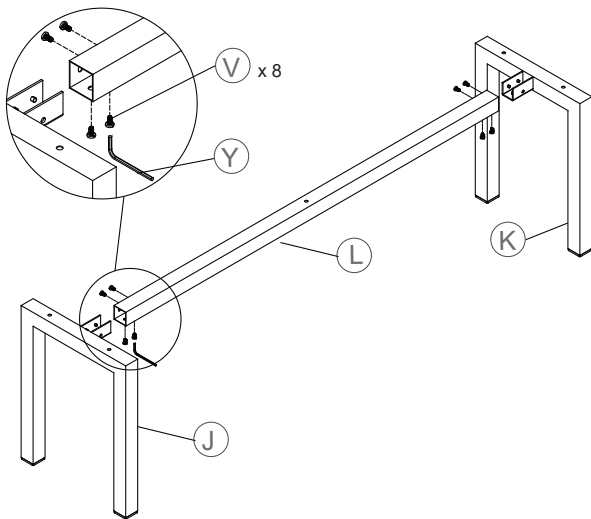


Rivet- 60/72" Hutch

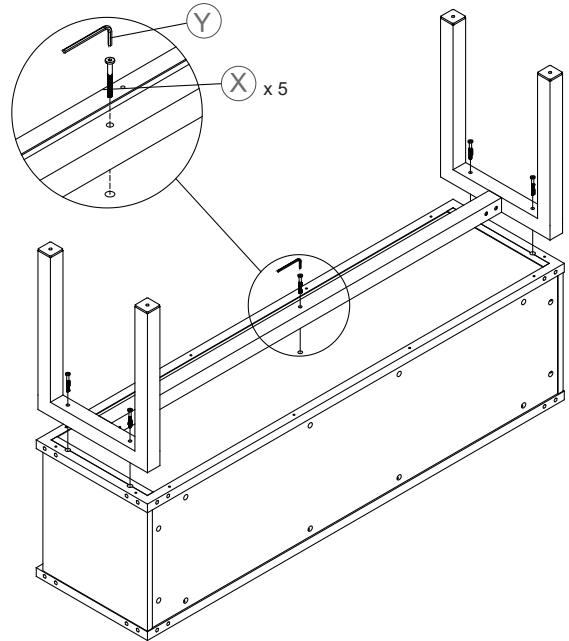
Assembly Instructions

INSTRUCTIONS

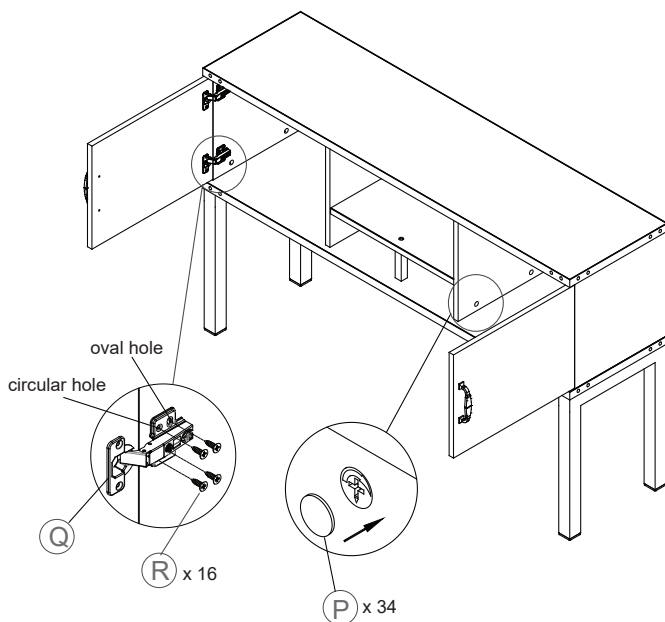
STEP 6



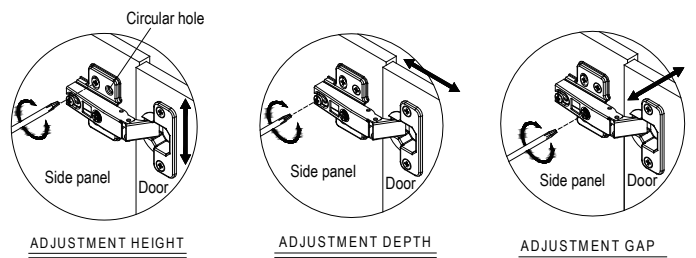
STEP 7



STEP 8



STEP 9



Once height adjustment is complete, insert screw (R) into the circular hole to attach the hinge.