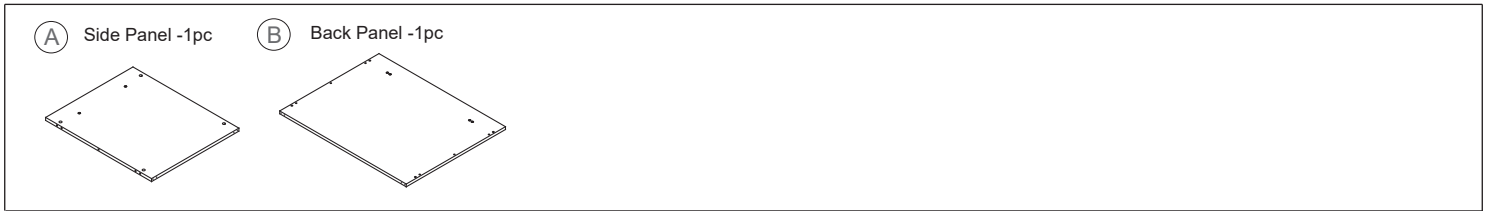


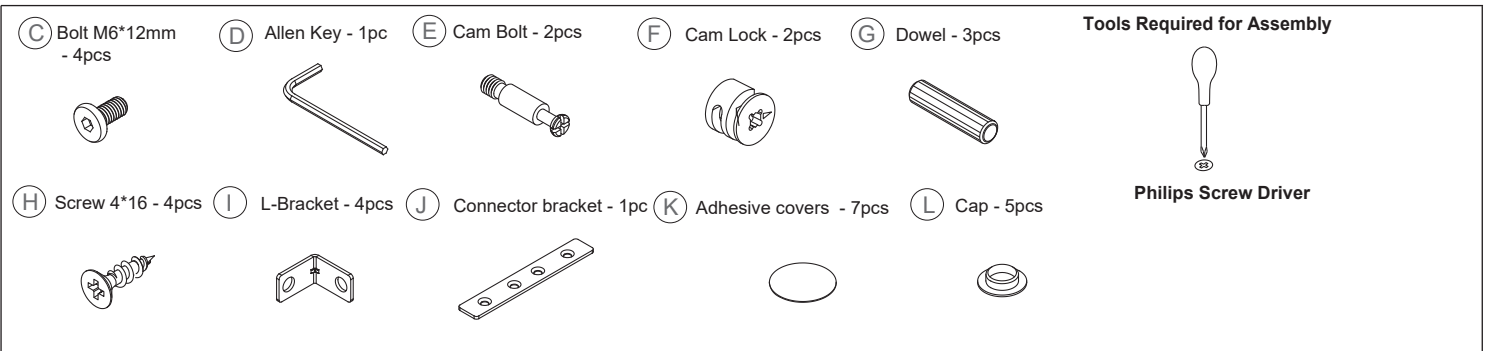


# At Work- The Panels for 37" x 25" Reception Return Assembly Instructions

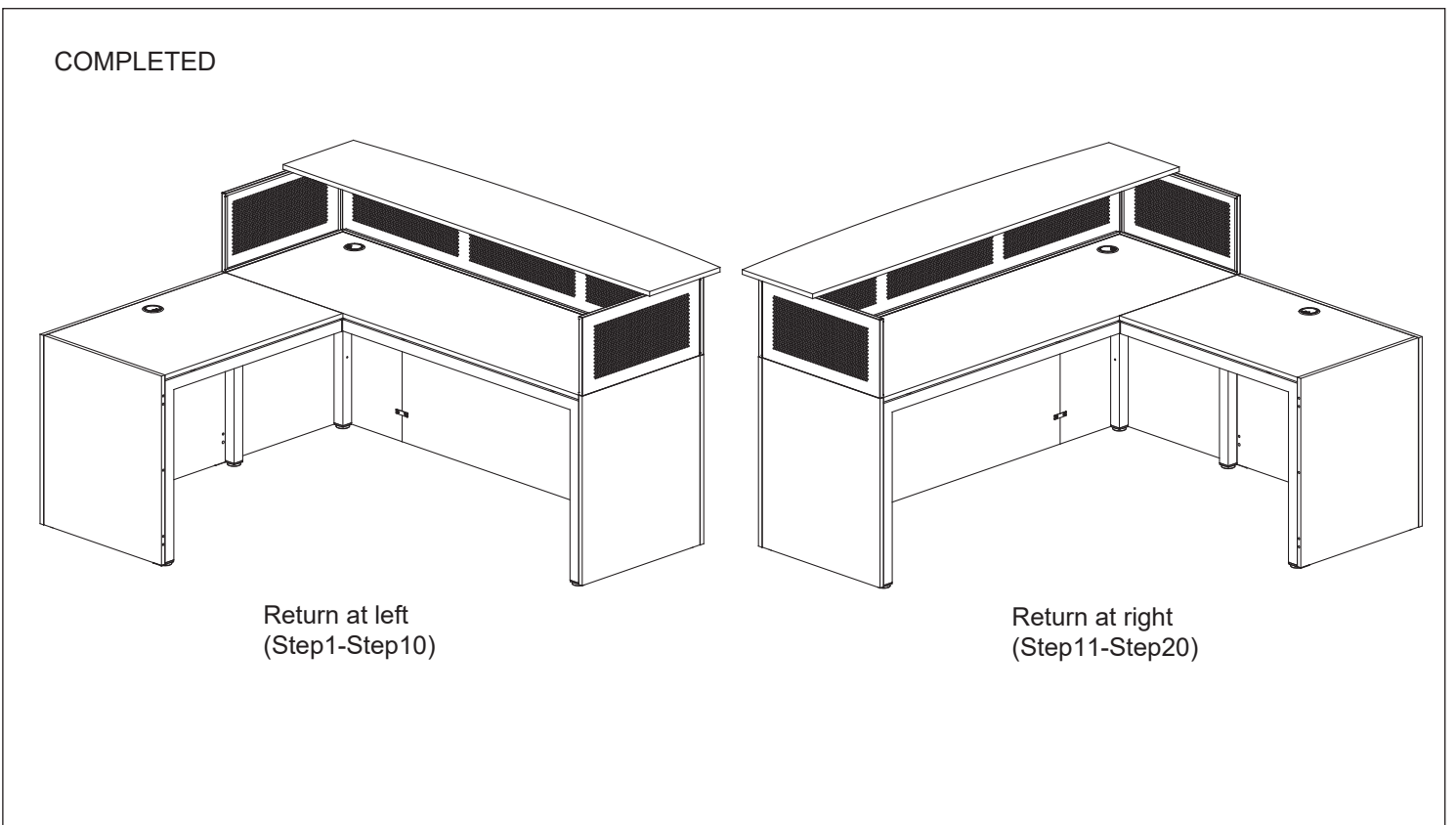
## COMPONENTS



## HARDWARE & TOOLS



## INSTRUCTIONS

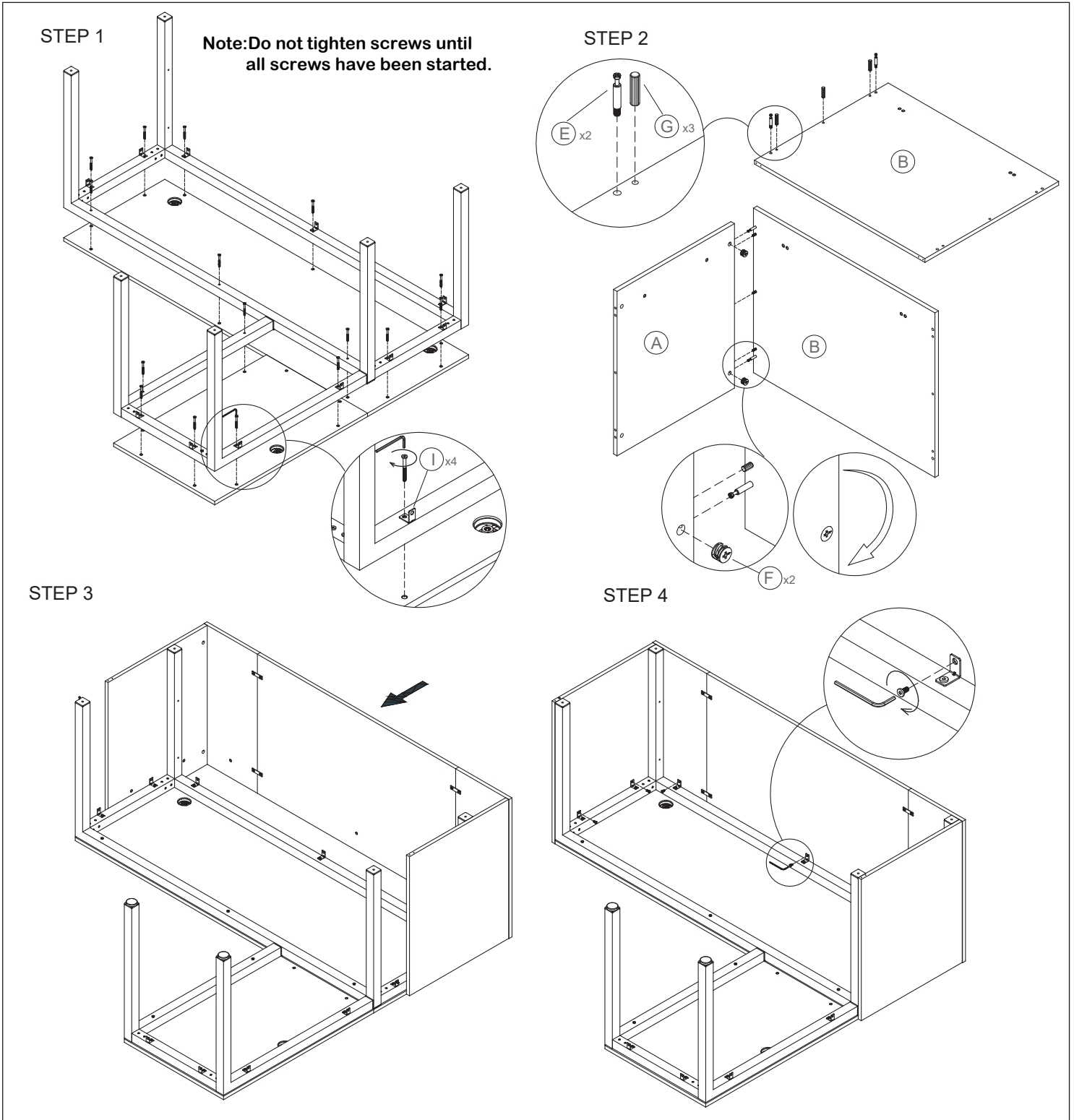




# At Work- The Panels for 37" x 25" Reception Return

Assembly Instructions

## INSTRUCTIONS



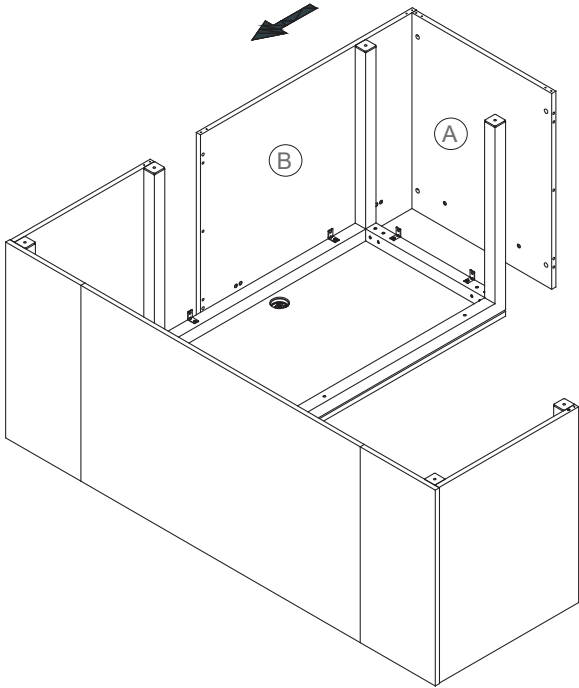


# At Work- The Panels for 37" x 25" Reception Return

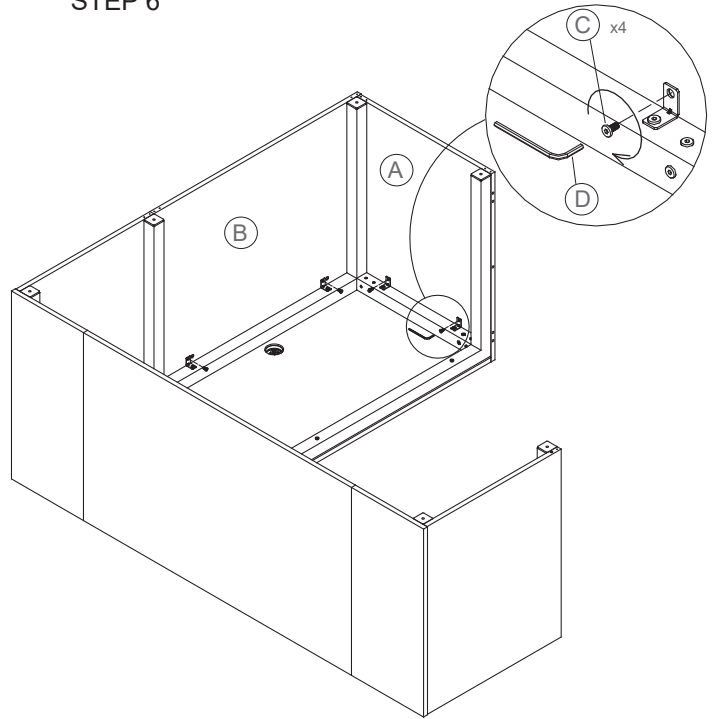
Assembly Instructions

## INSTRUCTIONS

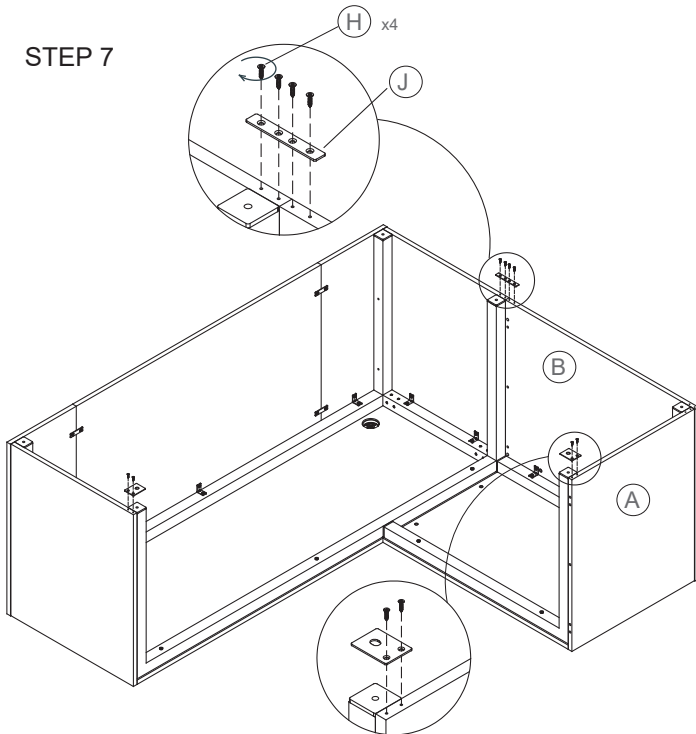
STEP 5



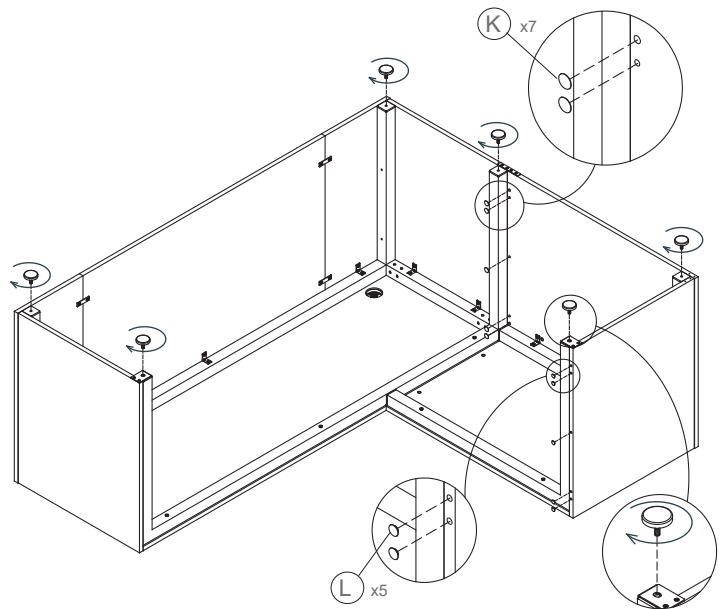
STEP 6



STEP 7



STEP 8



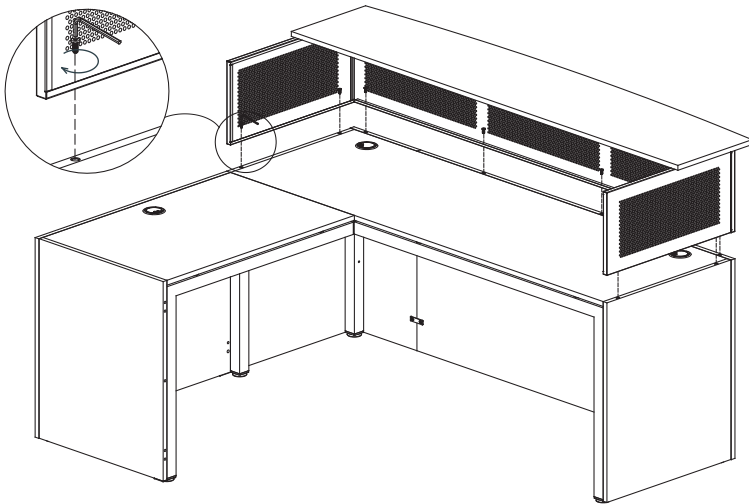


# At Work- The Panels for 37" x 25" Reception Return

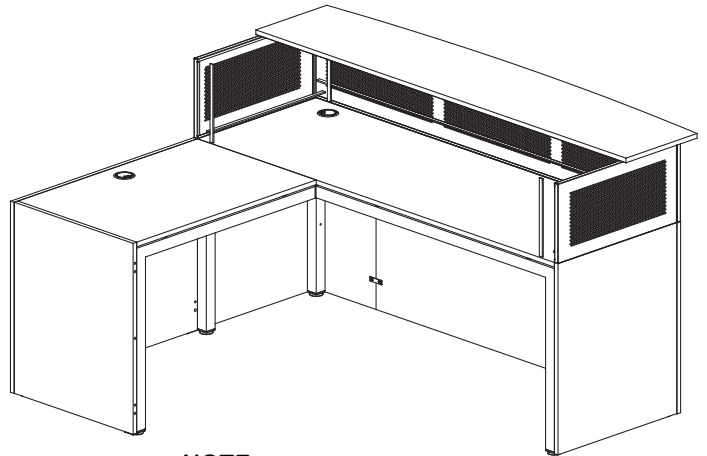
Assembly Instructions

## INSTRUCTIONS

STEP 9



STEP 10

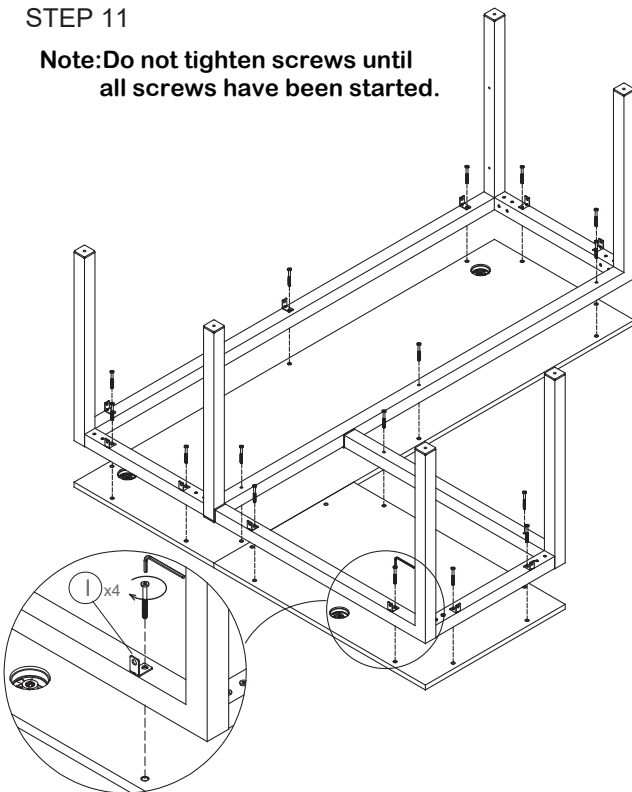


**NOTE**

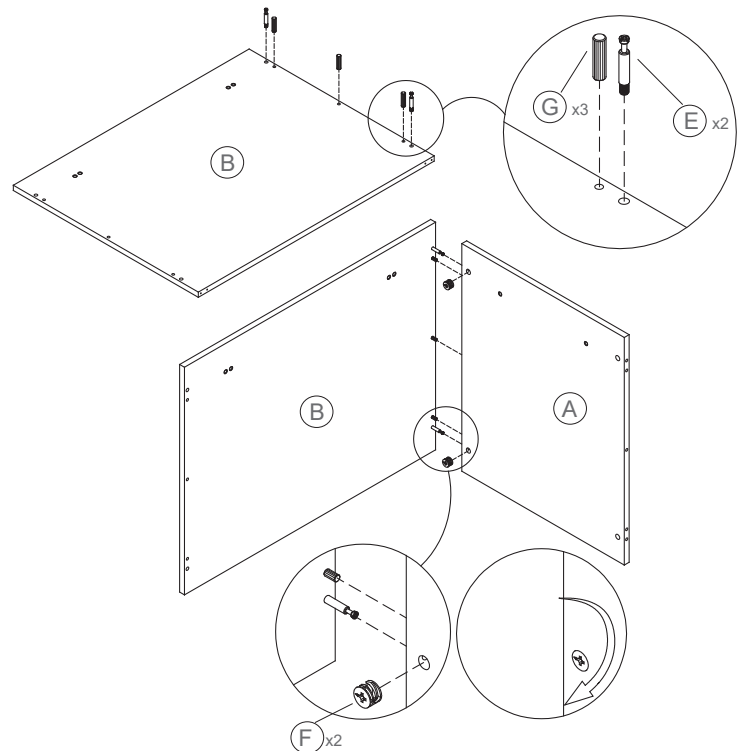
Peel off the backing of the EVA strips and place the strip in the grooves of the panels.

STEP 11

**Note: Do not tighten screws until all screws have been started.**



STEP 12



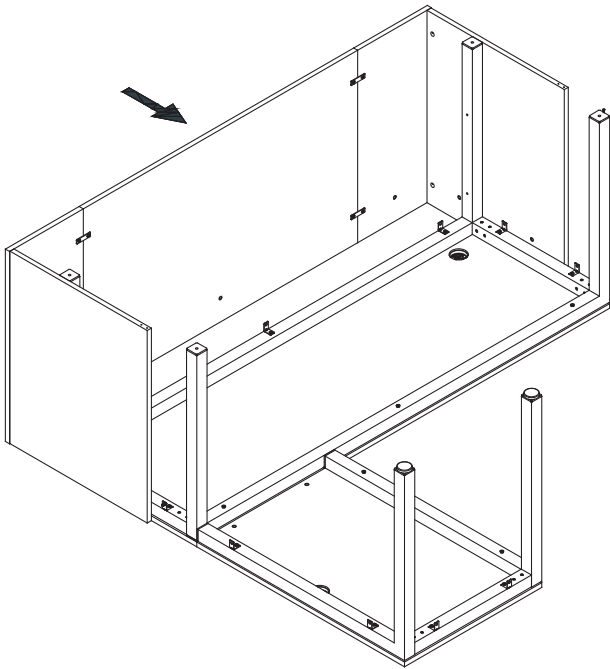


# At Work- The Panels for 37" x 25" Reception Return

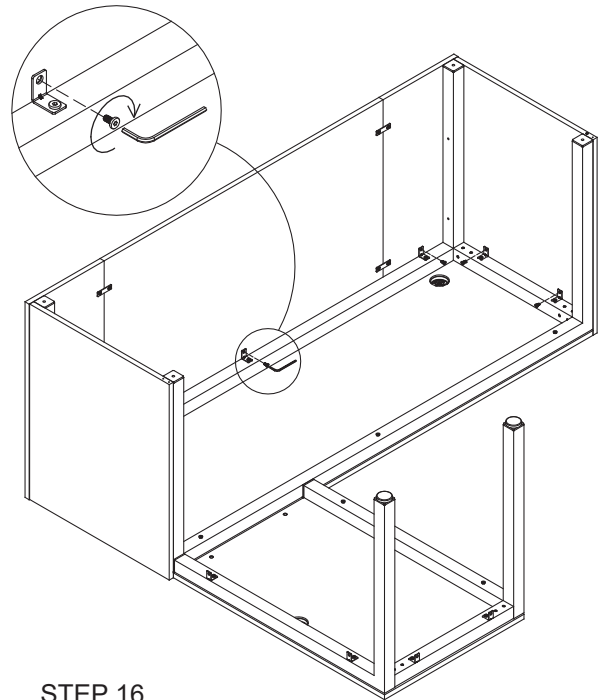
Assembly Instructions

## INSTRUCTIONS

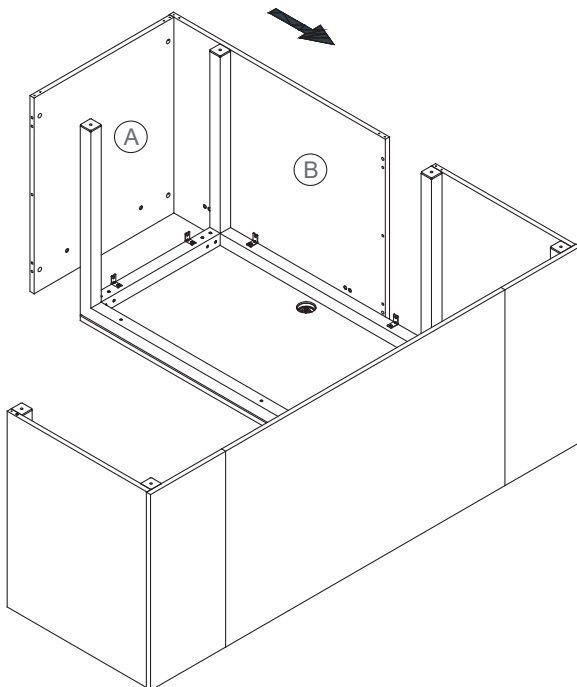
STEP 13



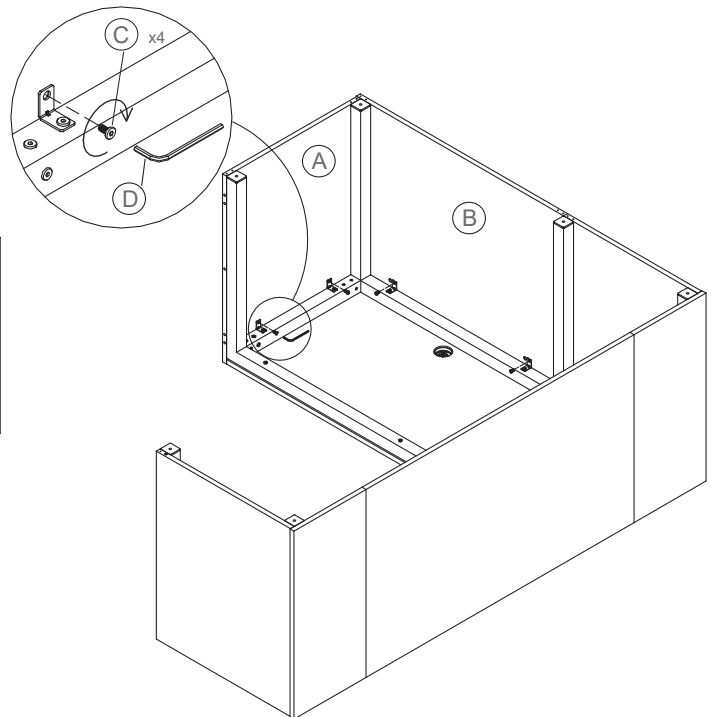
STEP 14



STEP 15



STEP 16



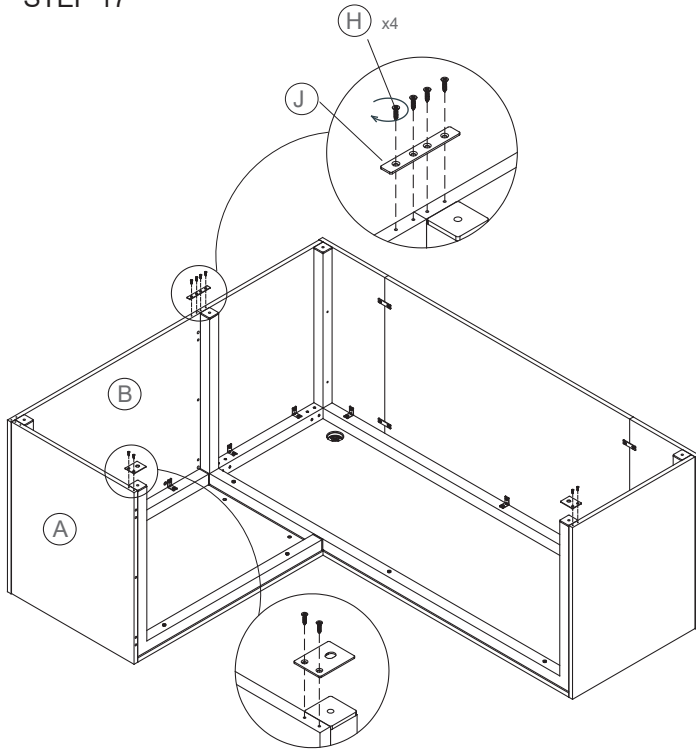


# At Work- The Panels for 37" x 25" Reception Return

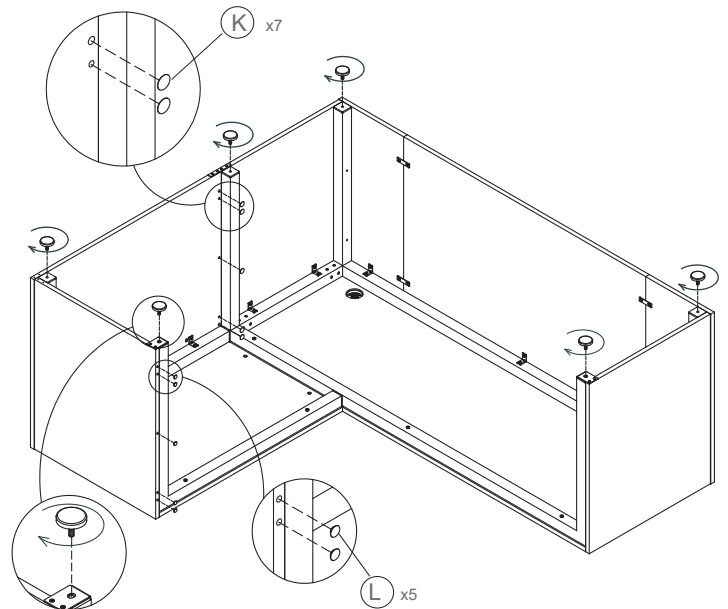
Assembly Instructions

## INSTRUCTIONS

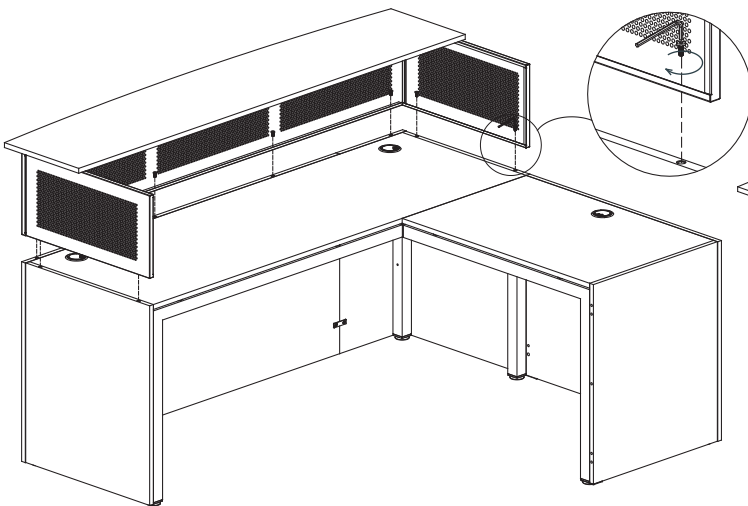
STEP 17



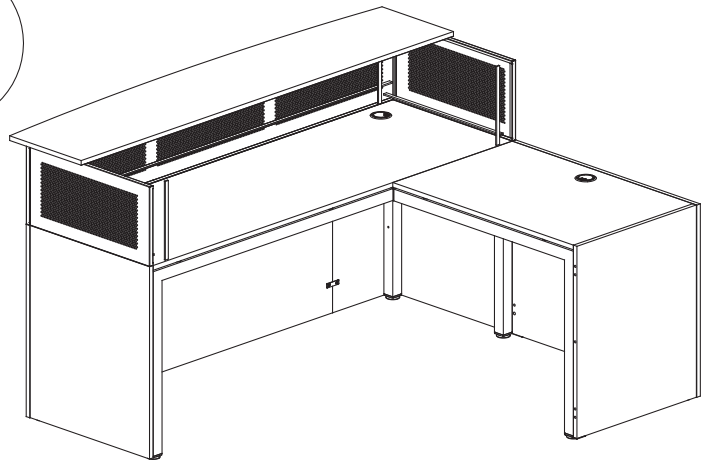
STEP 18



STEP 19



STEP 20



**NOTE**

Peel off the backing of the EVA strips and place the strip in the grooves of the panels.