



User Manual for Mail and Parcel Drop Box

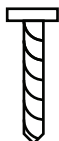
Read all instructions before using drop box.

Mounting Instructions

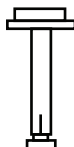
The parcel drop box mounted to a floor. Be aware of the load bearing. Failure to do so can result in personal injury and/or damage to property. Use appropriate tools when performing work and always use eye protection floor Mounting

Mounting Screws:

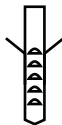
For Wood x 4



For Concrete x 4

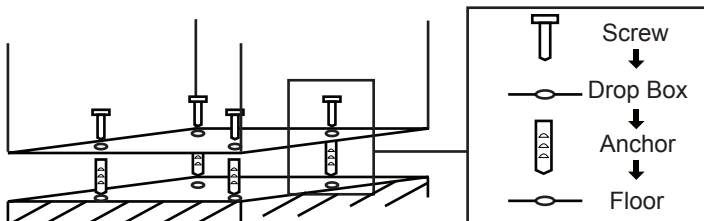
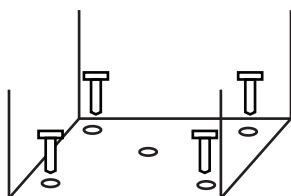


x4



Floor Mounting

- Mark the exact position onto the floor.
- Use proper drill tools depending on the type of floor you are mounting the drop box (wood, tile, or concrete).
- Drill the appropriate size holes for the anchors you are using.
- Carefully press the anchor into the holes at this time.



- Mount the safe by running screws from inside of the safe and securing to anchors; ensure the parcel drop box mounted securely.

Plate

Optional

Hole Plate

Propose is fixed hole. It can be place under the drop box.



How To Lock Mail Box

After closing the mail box door, push the left side button to lock the mail box door.

