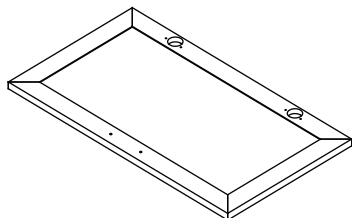


**Congratulations on the purchase of your new *Signature Series* product!**

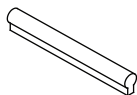
## COMPONENTS

(A) Door panel-2pcs



## HARDWARE & TOOLS

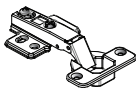
(B) Handle- 2pcs



(C) Screw M4\*22 - 4pcs



(D) Hinge - 4pcs



(E) Screw M4\*16 - 24pcs



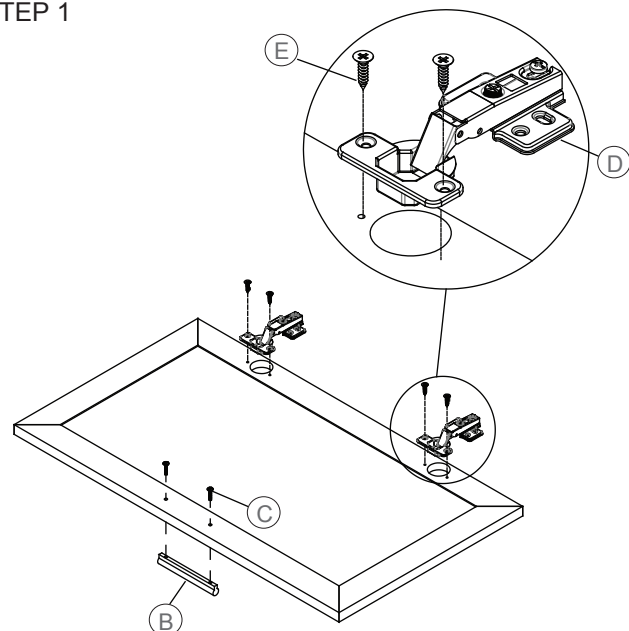
### Tools Required for Assembly



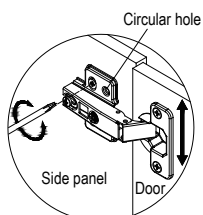
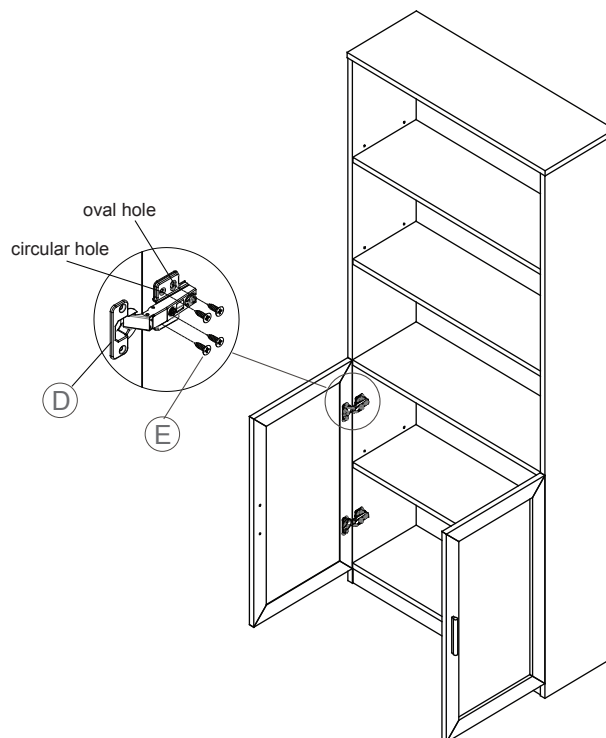
Philips Screw Driver

## INSTRUCTIONS

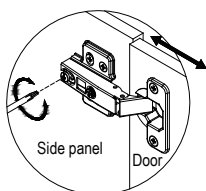
### STEP 1



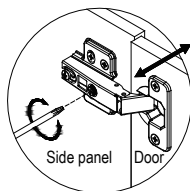
### STEP 2



ADJUSTMENT HEIGHT



ADJUSTMENT DEPTH



ADJUSTMENT GAP

Once height adjustment is complete, insert screw (E) into the circular hole to attach the hinge.