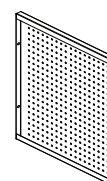
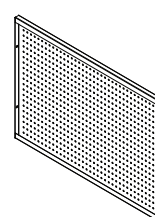
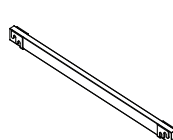
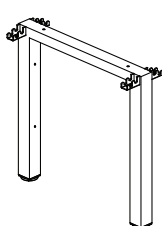
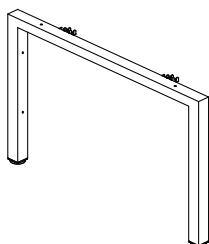
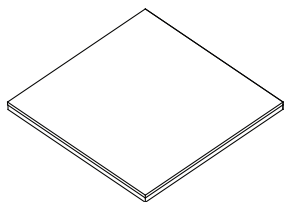


Congratulations on the purchase of your new *Signature Series* product!

COMPONENTS

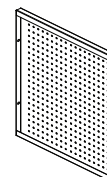
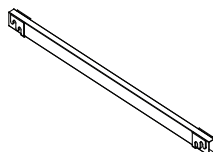
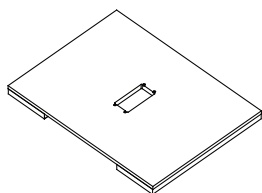
Starter Unit (AW-CFSU-H4830)

- (A) Desk Top -1pc (B) Side frame(1) -1pc (C) Side frame(2) -1pc (D) Rail -2pcs (E) Side Panel(1)- 1pc (F) Side Panel(2)- 1pc

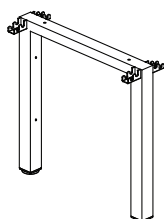


Center Add-on Unit (AW-CFAU-H3630/AW-CFAU-H4830)

- (G) Desk Top -1pc (For AW-CFAU-H3630) (H) Rail -2pcs (For AW-CFAU-H3630) (F) Side Panel(2)- 1pc
(I) Desk Top -1pc (For AW-CFAU-H4830) (J) Rail -2pcs (For AW-CFAU-H4830)



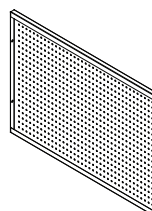
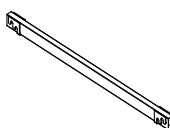
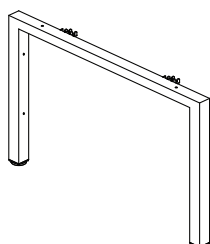
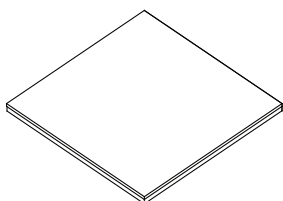
- (C) Side frame(2) -1pc



NOTE:Center Add-on unit parts are only used on tables larger than 8'.

End Unit (AW-CFEU-H4830)

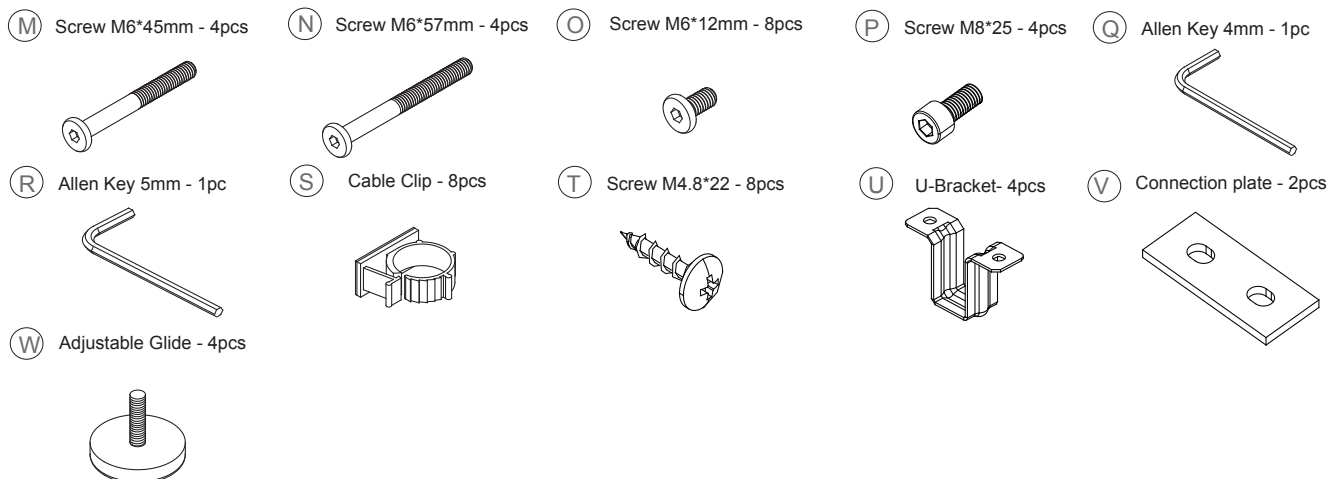
- (K) Desk Top -1pc (B) Side frame(1) -1pc (L) Rail -2pcs (E) Side Panel(1)- 1pc



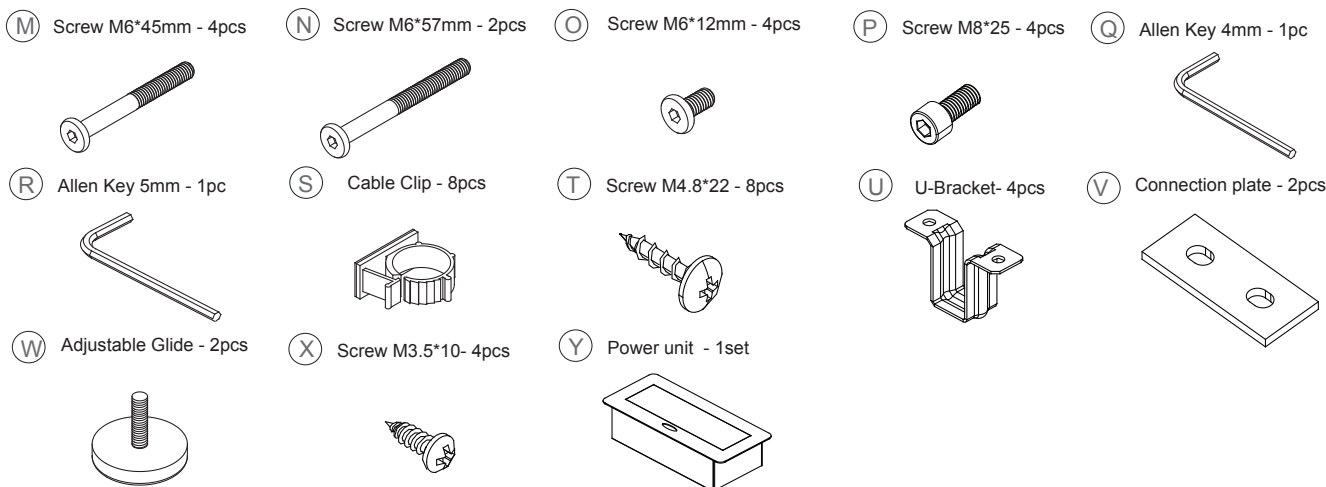
Congratulations on the purchase of your new *Signature Series* product!

HARDWARE & TOOLS

Starter Unit (AW-CFSU-H4830)

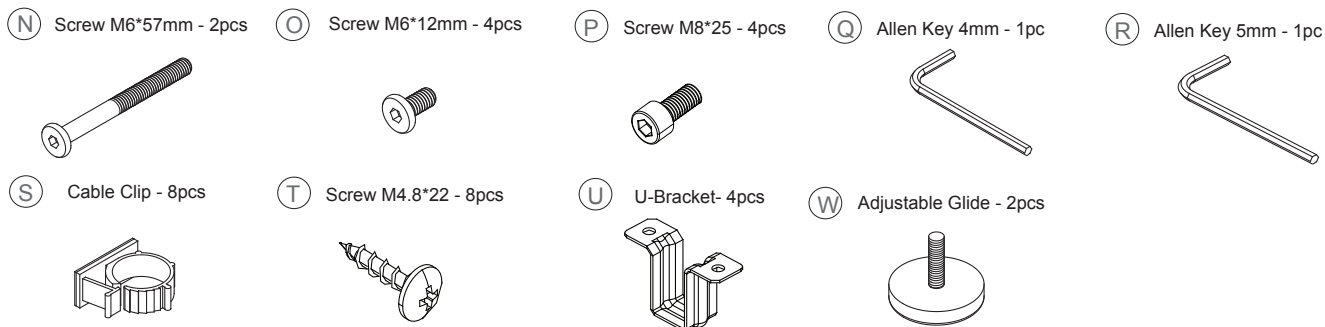


Center Add-on Unit (AW-CFAU-H3630/AW-CFAU-H4830)



NOTE: Center Add-on unit parts are only used on tables larger than 8'.

End Unit (AW-CFEU-H4830)

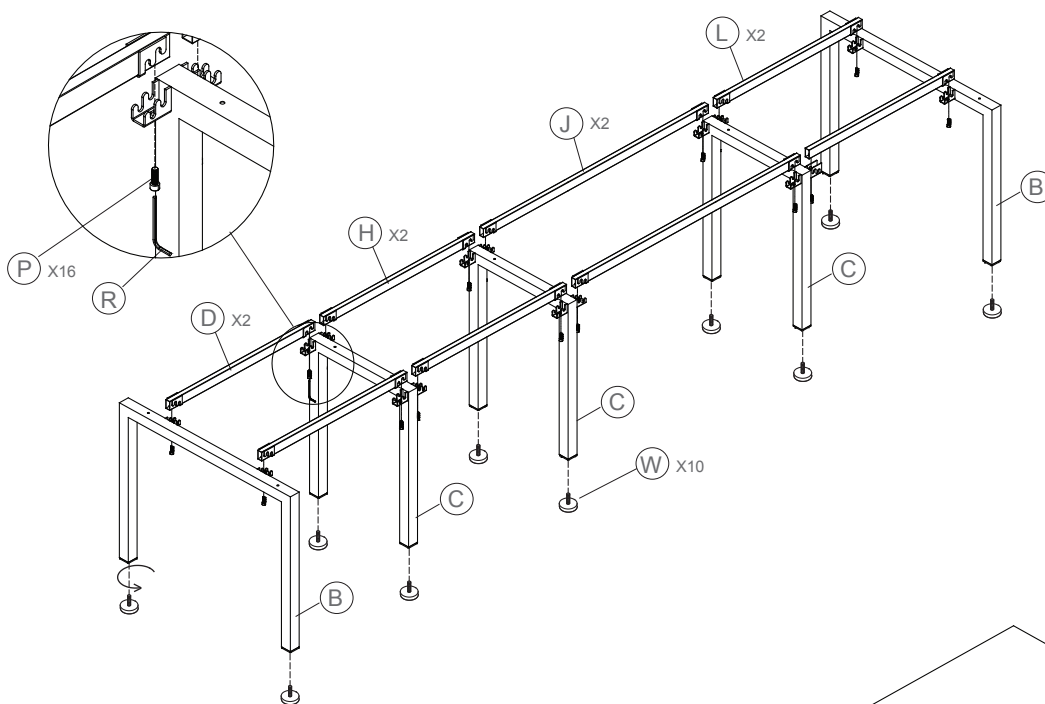


Congratulations on the purchase of your new *Signature Series* product!

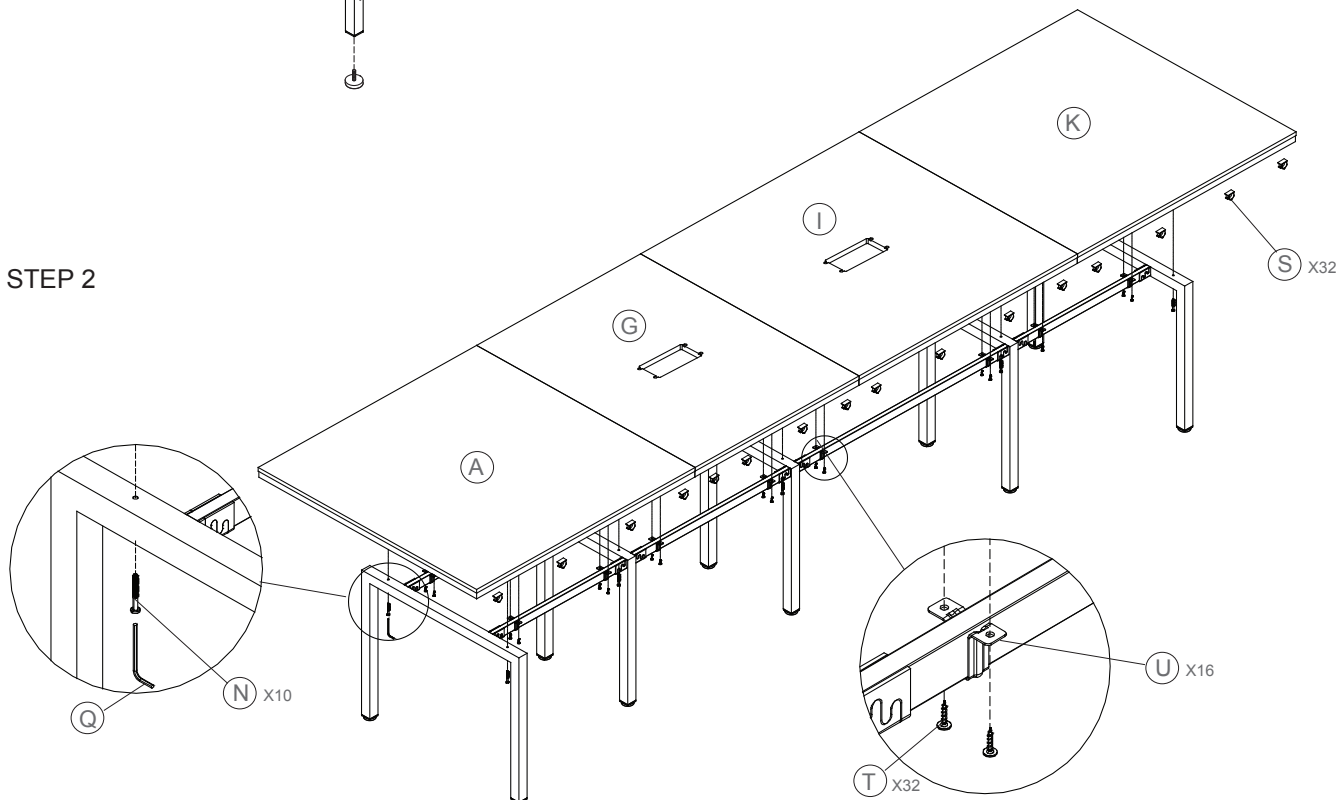
INSTRUCTIONS

Notice: Do not drag the tables or lift the tables after assembled.
Please disassemble to move.

STEP 1



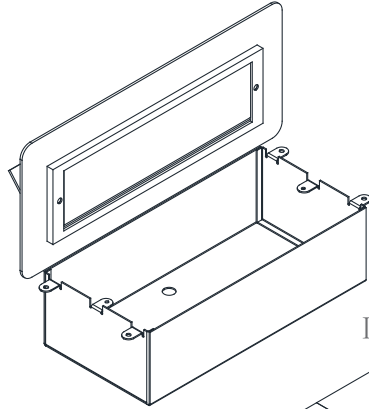
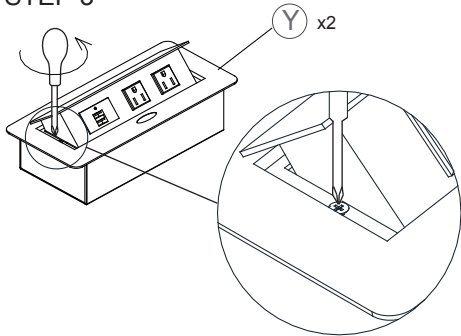
STEP 2



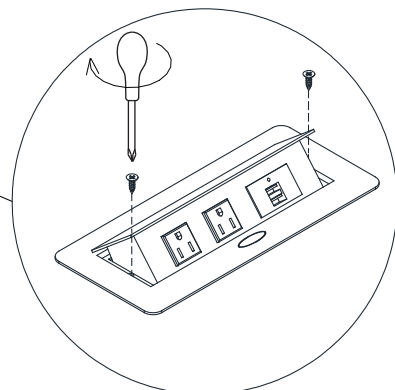
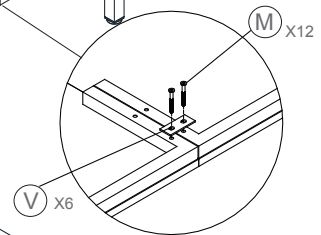
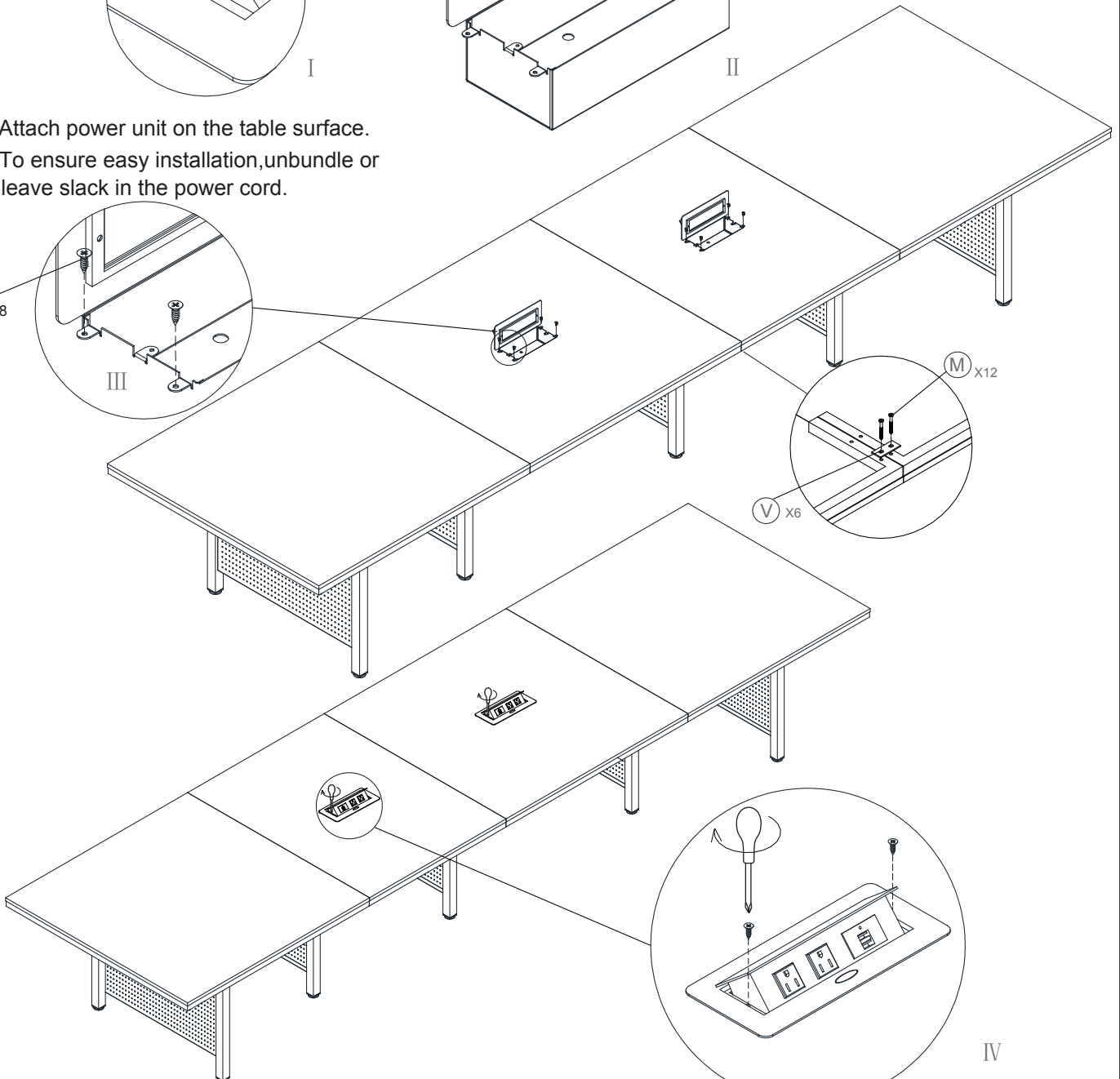
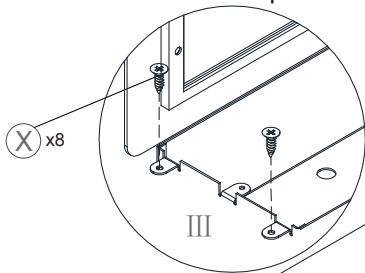
Congratulations on the purchase of your new *Signature Series* product!

INSTRUCTIONS

STEP 3



Noted: Attach power unit on the table surface.
To ensure easy installation, unbundle or leave slack in the power cord.



Congratulations on the purchase of your new *Signature Series* product!

INSTRUCTIONS

STEP 4

