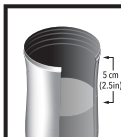


contigo®

West Loop Tea Infuser Care and Use Instructions



⚠ WARNING

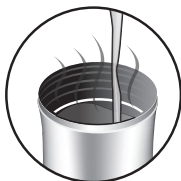
Hot water can cause burns. Fill the travel mug with hot water, leaving at least 5 cm (2.5 in) room from top of mug. Insert infuser slowly into the mug to avoid overflow.

⚠ WARNING

- The Tea Infuser is designed to fit ONLY into your Contigo AUTOSEAL West Loop Travel Mug. Not for use with other products.

To properly use your West Loop Tea Infuser:

- If filling with boiling liquid, allow liquid to cool down WITH THE LID OFF for at least 3 minutes before attaching lid.



Fill the travel mug with hot water, leaving at least 5 cm (2.5 in) room from top of mug.



Fill the tea basket with desired amount of loose leaf tea or a tea bag.



Close the tea basket by screwing on the cover, and attach the infuser to lid.

- Lower the travel mug lid with Tea Infuser slowly into the water, taking care to ensure hot water does not overflow.
- Close the travel mug securely and brew tea as desired.
- After brewing, open lid and allow liquid to fully drain from infuser into the travel mug.
- Remove tea infuser from the lid and attach drip cup. Keep drip cup in upright position to avoid leakage.
- DO NOT use drip cup inside the travel mug when beverage is hot.
- DO NOT place wet tea infuser with drip cup into bag or carrying case as contents may leak.



CLEANING INSTRUCTIONS:

- Wash thoroughly before the first use.
- The tea infuser basket as well as the cover and the drip cup are top-rack dishwasher safe.
- To wash by hand, soak the tea infuser, the cover and the drip cup in warm, soapy tap water for 10 minutes. Use a soft sponge on surfaces and then rinse using clean warm water.



www.GoContigo.com

©2015 Ignite USA, LLC. All Rights Reserved.

Should you have any questions about your purchase, please contact us at 1-888-262-0622 or GoContigo.com.