

contigo®



AUTOSPOUT® Glass Water Bottle Care and Use Instructions

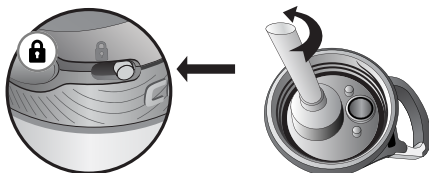
⚠ CAUTION

- Product is **NOT** designed for hot liquids. Use only with cold liquids.
- Not for use with carbonated or pulpy beverages.
- Prior to drinking, make sure the lid is properly threaded to the body and screwed on completely.
- Avoid accidental depressing of the AUTOSPOUT® button by keeping the button free and clear of other objects.
- **DO NOT** overfill. Fill liquids to just below the threading in the body.
- **DO NOT** microwave or freeze.
- **DO NOT** use cleaners containing bleach, chlorine, abrasives and/or other harsh chemicals.
- **DO NOT** continue to use product if damaged.
- **DO NOT** carry bottles containing liquid in bags to help prevent accidental opening.

USAGE RECOMMENDATIONS:

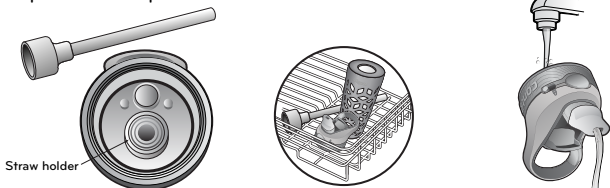


- Do not pull or rotate the spout shield as it may cause damage to the lid.
- Silicone drink spout is **NOT** removable.
- When using the water bottle at high altitudes, such as during an airplane flight or when bottle is exposed to prolonged hot temperatures, such as in an enclosed car, twist the lid a quarter turn to relieve pressure, then reseal the lid before use.
- The AUTOSPOUT® lid that came with your new purchase is designed to only fit your Contigo® water bottle. Not for use with other products.
- Use the bottle's lock feature to avoid unintended depressing of the AUTOSPOUT® button.
- To remove straw twist to the left. Do not try to pull the straw off.

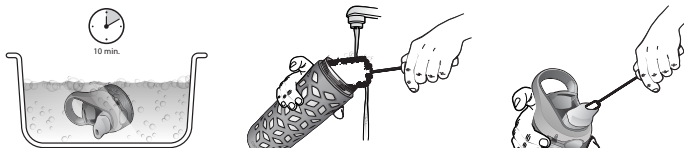


CLEANING INSTRUCTIONS:

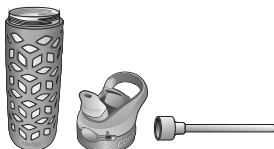
- Wash thoroughly before first use.
- **RINSE IMMEDIATELY AFTER EACH USE** with warm water and spout in the open position.
 - Remove straw for best results.
- All components are top-rack dishwasher safe.



- If washing by hand, soak lid for 10 minutes in hot, soapy water. Hand wash body with warm water and a mild detergent. Rinse both lid and body thoroughly before use.
- For best cleaning results, use a Contigo® bottle + spout brush, www.GoContigo.com.



- **ALWAYS STORE BOTTLE WITH LID REMOVED** to allow parts to dry completely.



For complete warranty information, see www.GoContigo.com.
www.GoContigo.com

©2016 Ignite USA. All Rights Reserved.

Should you have any questions about your purchase, please contact us at 1-888-262-0622 or GoContigo.com.