



23817



LOW PROFILE LED BEACON

Features

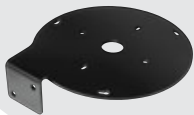
- Permanent mount
- Durable Polycarbonate Flanged Base
- Polycarbonate lens and dome with UV inhibitors
- Magnetic and vacuum magnet mounting available on some models
- Available in other colours and clear lenses
- 12-24 Volts DC operation



Switch 766163
(sold separately)

Recommended Mounting Solution

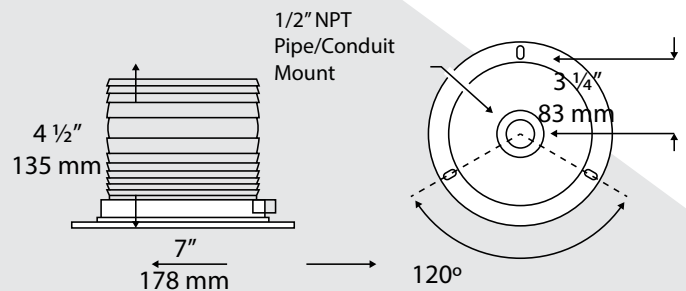
Installation accessories sold separately.
All metal brackets are powder coated and come with stainless steel hardware.



98018
Passenger Side



98017
Driver Side



FLEET

- 5 year warranty

Part #	Lens	SAE	# Patterns
--------	------	-----	------------

27006	Amber	Class 2	3
-------	-------	---------	---



FLEETPLUS

- BatteryCheck™
- AutoDim™
- Synchronization
- 10 year warranty

Part #	Lens	SAE	# Patterns
--------	------	-----	------------

23817	Amber	Class 1	15
-------	-------	---------	----