



# ***GOLF CART BATTERIES***

*More power on the green.  
Less maintenance in-between*

NAPA Golf Cart batteries are built with more deep cycle power for longer times on the green than similar designs. Durability enhancements, high-density components, and an electrical short protection system ensure less maintenance in-between times of demanding use. Special manufacturing features significantly reduce time-consuming battery maintenance and frequent watering while delivering the industry's most trusted performance.



## **Key Features and Benefits of the NAPA Series of Golf Cart Batteries.**

- Heavy-Duty DeepCycle Service  
High-density plates and reinforced grid design withstand continual deep cycling
- Electrical Short Prevention System  
Protects power-producing components from life-robbing electrical shorts
- Special alloy and separator material reduces water consumption.
- Outdoor-tough polypropylene case and cover  
Resist breakage to protect equipment and extend service life
- Rugged vibration resistant construction  
Reinforced internal design withstands heavy-duty use
- Premium glass mats  
Protect battery's ability to store energy (less recharging)
- Less watering, less maintenance design

---

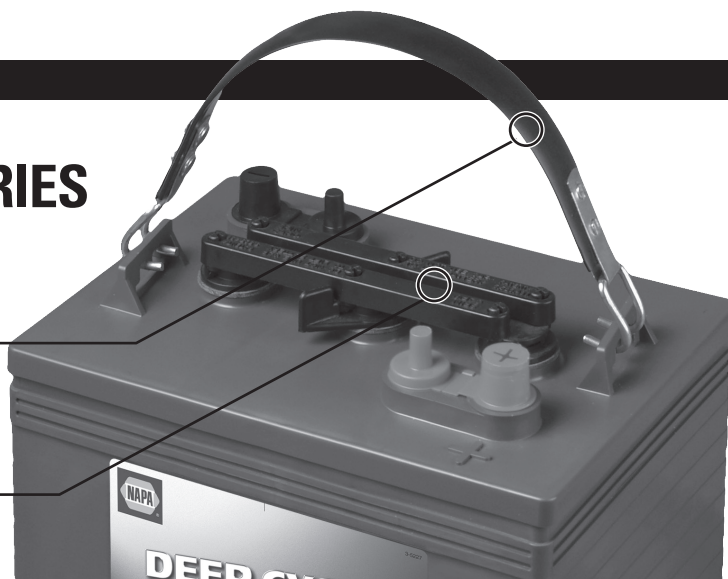
*Backed by NAPA's Nationwide Warranty*



# GOLF CART BATTERIES

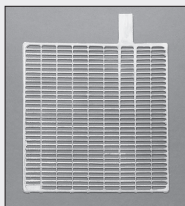
**Ergonomic lift handles**  
reduces the risk of slippage.  
Designed for easier installation

**Integrated “twist-and-release”  
vent cap “quick fill” system**  
releases vent caps in a single motion  
design, making maintenance a snap

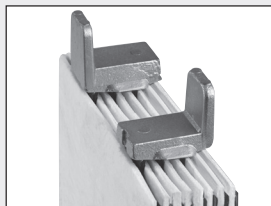


NAPA PART NUMBER	Volts	20 HR. CAP.	MINUTES OF DISCHARGE @ 75 AMP DRAW	APPROX. WEIGHT LB / KG	MAXIMUM DIMENSIONS						FOOTNOTES
					INCHES	MM	INCHES	MM	INCHES	MM	
					LENGTH		WIDTH		HEIGHT		
FLOODED TECHNOLOGY											
GC2-110	6	230 min.	120 min.	64 / 29	10-1/4	260	7-1/8	181	10-7/8	276	4,11,27,36,U
GC25	6	235 min.	132 min.	68 / 30.8	10-1/4	260	7-1/8	181	10-7/8	276	4,11,27,36,U
GC45	6	255 min.	145 min.	77 / 34.9	10-1/4	260	7-1/8	181	11-7/8	302	4,11,27,36,U
GC8V	8	165 min.	85 min.	68 / 30.8	10-1/4	260	7-1/8	181	11-1/8	283	4,11,27,36,U
GC12T	12	150 min.	70 min.	85 / 38.5	13	329	7-1/8	181	11	280	11,17,27,N

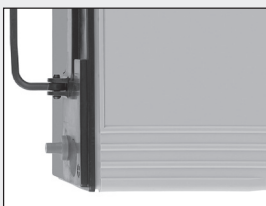
## AGM Features and Benefits



Thicker full-frame positive and negative grid delivers dependable power.



Electrolyte absorbed glass mats completely protect the plates for premier cycle service power and longer life.



Even if turned on its side, advanced AGM technology will not spill and has superior resistance to vibration damage.

## GEL Construction

Thick, shock absorbing gel and high density plates provide superior resistance to vibration and deep cycle damage.



NAPA PART NUMBER	Volts	20 HR. CAP.	MINUTES OF DISCHARGE @ 75 AMP DRAW	APPROX. WEIGHT LB / KG	MAXIMUM DIMENSIONS						FOOTNOTES
					INCHES	MM	INCHES	MM	INCHES	MM	
					LENGTH		WIDTH		HEIGHT		
SEALED VALVE REGULATED TECHNOLOGY - MAINTENANCE FREE											
8AGC2	6	190 min.	94 min.	68 / 30.8	10-1/4	260	7-1/8	181	10-7/8	276	2,13,U
8GGC2	6	180 min.	92 min.	69 / 31.2	10-1/4	260	7-1/8	181	10-7/8	276	4.38.39.58,U

## FOOTNOTES:

2. Black cover / Gray case
4. Gray cover / Gray case
11. Low maintenance - low antimony grids
13. Absorbed Glass Mat Technology (AGM)
17. Includes handle
27. Quick Release one-quarter turn gang vent caps

36. Peak Performance Capacity
38. “Non-spillable” defined by DOT (Department of Transportation) definitions
39. “Non-spillable” defined by ICAO (International Civil Aviation Organization) and IATA (International Airline Transport Association) definitions

58. Gel Technology
- U. Molded-in offset SAE post and vertical 5/16” POS. and NEG. stainless steel studs with hex nuts
- N. Vertical Stainless Steel 5/16 “ - 18 studs (THPT)

Weights are approximate  
Batteries manufactured in polypropylene cases & covers  
Ratings confirm to B.C.I. Specifications

