

1400 Slack Reducing Coupling

ORDERING INFORMATION



OPERATION WITH OR
WITHOUT AIR SERVICE
CHAMBER



The **NEW 1400** replaces the discontinued 100-4 used in heavy duty applications. Using the latest technology, engineers reduced the weight while increasing the surface hardness and raising the latch capacity to 60,000 lbs.

Coupling Only:

- 1400 & 271 Thimble

Standard Installation Kit:

- **1400A:** 1400 Coupling, 508 Bolt Kit, 281 Air Chamber, 467 Air Chamber Adapter Bracket, 271 Thimble

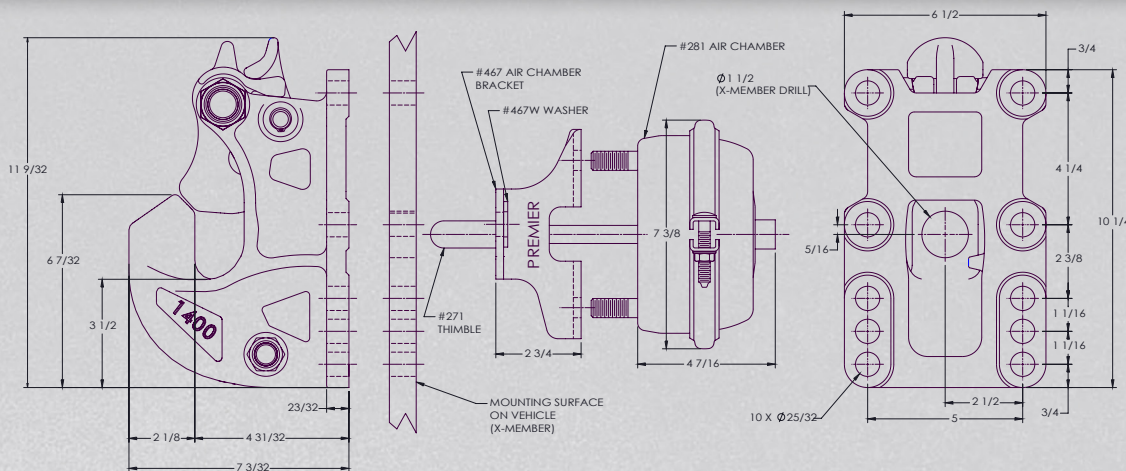
Optional Accessories:

- **Air Chamber 282 Type-30 (pg 74):** Provides a larger diaphragm for greater shoe force compared to 281 Air Chamber
- **Air Chamber Brackets (pg 74):** 467H (3/4 in. / 19 mm), 467F (5 1/2 in. / 140 mm)
- **Thimbles (pg 74):** 271B (4 3/8 in. / 111 mm), 271C (5 1/2 in. / 140 mm)
- **Wear Gage 14014 (pg 73):** To determine hook wear limits
- **Latch Gage 14026 (pg 73):** To determine latch gap limit
- **Bolt Kit 508 (pg 75):** Bolts (6) 2 1/2 in. (2) 2 3/4 in., Locknuts (8)
- **438 Drawbar Guides:** Helps guide drawbar eye into coupling.

SPECIFICATIONS

Maximum Gross Trailer Weight:	110,000 lbs.	(49,895 kg)
Maximum Tongue Weight:	20,000 lbs.	(9,072 kg)
Ultimate Latch Capacity:	60,000 lbs.	(27,216 kg)
Maximum Eye X-Section:	1 13/16 in.	(46 mm)
Minimum Eye Opening:	2 3/8 in.	(60 mm)
Unit Weight:	31.6 lbs.	(14.3 kg)

STANDARD INSTALLATION DRAWING



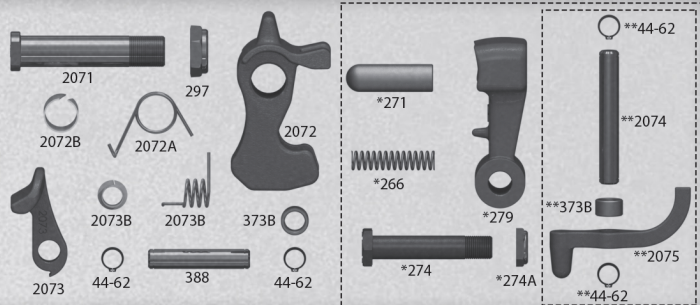
Pushrod length is 3 5/8 in. (92 mm) plus thickness of mounting structure for standard installations as illustrated.

REPLACEMENT PART INFORMATION

2000PK Parts Kit Includes:

44-62: Retaining Ring (2)	2073A: Spring
297: Locknut	2073B: Bushing
373B: Spacer	*266: Spring
388: Pin	*271: Thimble
2071: Bolt	*274: Bolt
2072: Latch	*274A: Locknut
2072A: Spring	*279: Shoe
2072B: Bushing	**2075: Lever
2073: Latch Lock	**44-62: Retaining Ring (2)
	**2074: Pin
	**373B: Spacer

*Not included in 2000PK Parts Kit,
available as 279PK Parts Kit.
**Available as a separate kit (2075K).



IMPORTANT GUIDELINES THAT APPLY TO ALL PREMIER SLACK REDUCING COUPLINGS

- Do not weld on any coupling assembly
- Always use Grade-8 fasteners properly torqued
- Do not apply lubricants to the coupling hook
- Air service chamber must be Type-24 or Type-30 with 90-120 PSI air supply
- Clean & inspect coupling for damage & excessive wear prior to each and every use
- Lubricate all coupling components at a minimum of 90 day intervals
- Do not bind-up (Jackknife) any application as stresses can cause damage to products or components, resulting in failure and detachment of the trailer while in use



Exploded view diagram of the front suspension assembly, showing various components and their part numbers:

- 2071
- 2072B
- 2072A
- 2073B
- 2073B
- 2073
- 44-62
- 388
- 297
- 2072
- 373B
- 44-62
- *271
- *266
- *274
- *279
- *274A
- **44-62
- **2074
- **373B
- **2075
- **44-62

13