



TECHNICAL DATA SHEET

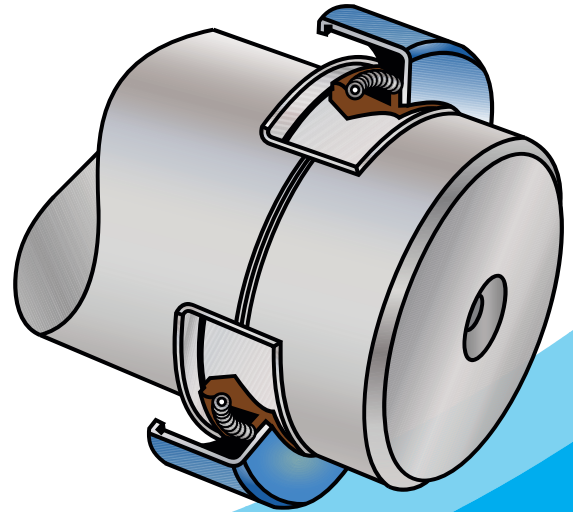
DESCRIPTION

The Durasleeve is a high performance thin-walled sleeve designed to be installed over a worn or damaged area of a shaft seal surface, utilizing the same seal size.

Its unique hard chrome surface significantly increases its longevity due to superior corrosion resistance, low friction, and high wear resistance. This is a dramatic technological improvement compared to your average wear sleeve.

The Durasleeve significantly reduces down-time, does not require full disassembly, and needs only minimal equipment to install.

Shaft Repair Sleeve



PRODUCT SPECIFICATIONS:

Material	SAE / ANSI 304 Stainless Steel with Hard Chrome surface	
Properties	Superior Corrosion Resistance, Low Friction, High Wear Resistance	
Surface roughness	10 μ " -20 μ "	0.25 μ m - 0.51 μ m
Lead Specifications	0.0 +/- .05 degrees	
Surface finish	Hard Chrome	
Surface hardness	68 Rockwell C	HV 940
Wall thickness	.009" +/- .001"	.23mm +/- .025mm
Size range	5/8" to 7"	15.82mm to 177.93mm
Features	Removable flange	



Contact Us

Dura Sleeve Inc.

📍 9785 192 St #303, Surrey, BC V4N 4C7

☎ 604-888-9098

✉ sales@durasleeve.com

