

EZTRAC™

EZ TRAILER TRACKING LIKE NO OTHER

One step tech is here. Minimal install, maximum value with real-time trailer tracking that is built to take abuse.

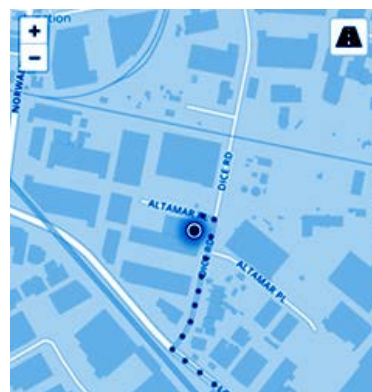


77-6280

HIGHLIGHTS

- Theft recovery device (concealed placement)
- Minimum install hassle, plugs into standard ABS harness
- 4G cellular LTE with nationwide coverage (includes Canada & Mexico)
- IP67 waterproof with STA-DRY® harness
- Can be powered by ABS or brake
- Simple to activate in 2 steps

**24/7/365 FOR ALL ASSETS ON
THE PCT WEB PORTAL**



**4G LTE NATIONWIDE
COVERAGE**

*Note: Hardware warranties, account subscriptions, and user interface services are provided through Phillips Connect Technologies (PCT), an SBU of Phillips Industries. End users should contact PCT at 833.213.5839 or www.phillips-connect.com for inquiries related to these matters.

For new and innovative products, visit www.phillipsind.com

EZTRAC™



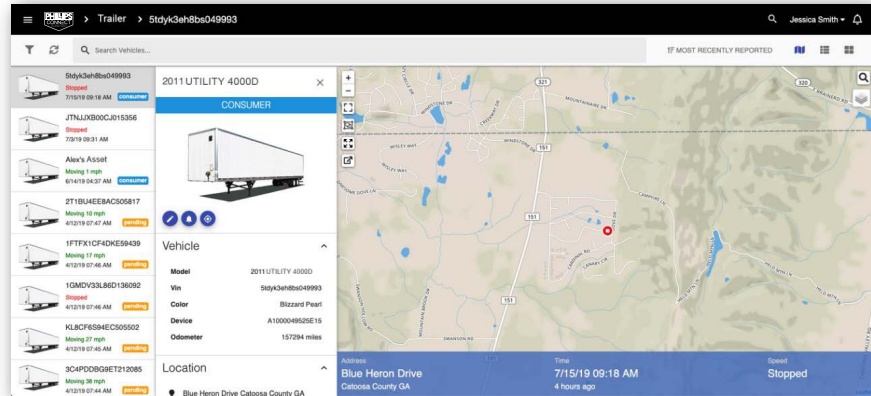
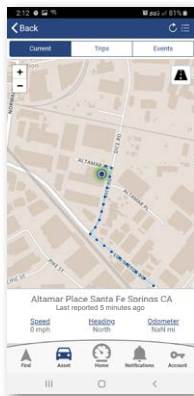
Download App



Scan Barcode



Fill in Information



SPECIFICATIONS

CELLULAR

- LTE Cat.1
- HSPA fallback bands 2, 5 (TMO)
- Integrated high sensitivity antenna
- Auto register to packet network

GPS

- Channels: 56
- Tracking sensitivity: -162 dBm
- Acquisition sensitivity: -148 dBm
- Location accuracy: 2.5 CEP

BLUETOOTH

- Low Energy (BLE)
- Version: 4.2

INTERFACE CONNECTOR (GPS Device to Harness)

- PWR (ABS/Brakes), GND

BATTERY

- Internal battery: 80mAh
- Operating voltage: 6V – 28V
- Voltage over-protected TVS 36V and fused

- Power consumption:
Sleep: less than 60mW
Tracking: less than 400mW

ENVIRONMENTAL

- IP67 Enclosure
- Operation temperature: -20°C to +60°C w/BBU
- Storage temperature: -40°C to +85°C
- Operation humidity: 20% to 90% (non-condensing)
- Storage humidity: 10% to 95% RH (non-condensing)

APPROVALS

- FCC 47 CFR part 15, part 22, and part 24; IC
- RoHS2 and WEEE
- PTCRB

*Note: Hardware warranties, account subscriptions, and user interface services are provided through Phillips Connect Technologies (PCT), an SBU of Phillips Industries. End users should contact PCT at 833.213.5839 or www.phillips-connect.com for inquiries related to these matters.

For new and innovative products, visit www.phillipsind.com

12070 Burke Street, Santa Fe Springs, CA 90670
800.423.4512 Fax 800.597.7757

PHILLIPS