

Putting wheel ends back in service

Tech tip

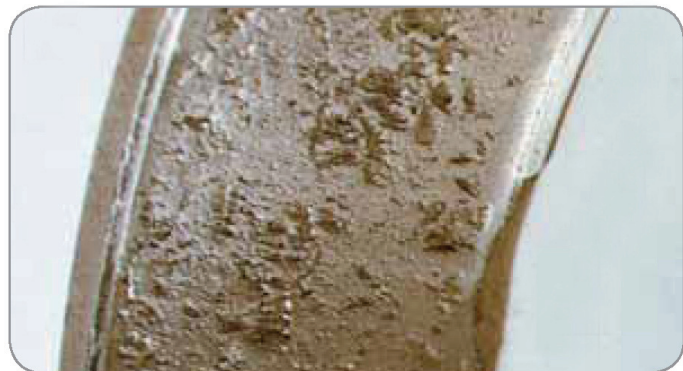
Many trucks have been sidelined during the recent recession. So that you'll be ready to roll when the economy does, wheel ends that have not moved for an extended period of time will need careful inspection and service. Here are some helpful tips to help you be ready to roll:

Bearings

- Inspect bearings for rust or corrosion and spalling (wearing away of the surface).
 - Replace if these conditions exist



Etching



Spalling

Seals

- Inspect seals. When idle, the upper half of the seal and bearing do not have contact with the lubricant.
 - Seal rubber will dry out and become stiff, losing its ability to seal.
 - Replace the seals before putting a vehicle back in service.

(cont.)

Putting wheel ends back in service—cont.

Lubricants

- Inspect lubricant for presence of hard particle contaminants and water contaminants (milky or discoloration).
- Thoroughly clean hub and spindle and inspect for signs of corrosion.
- Service as needed.
 - Replace bearings.
 - Refill new lubricant to proper levels with manufacturer's specified lubricant. Do not mix lubricants.
 - For greased wheel end, repack lubrication to manufacturer's specifications.

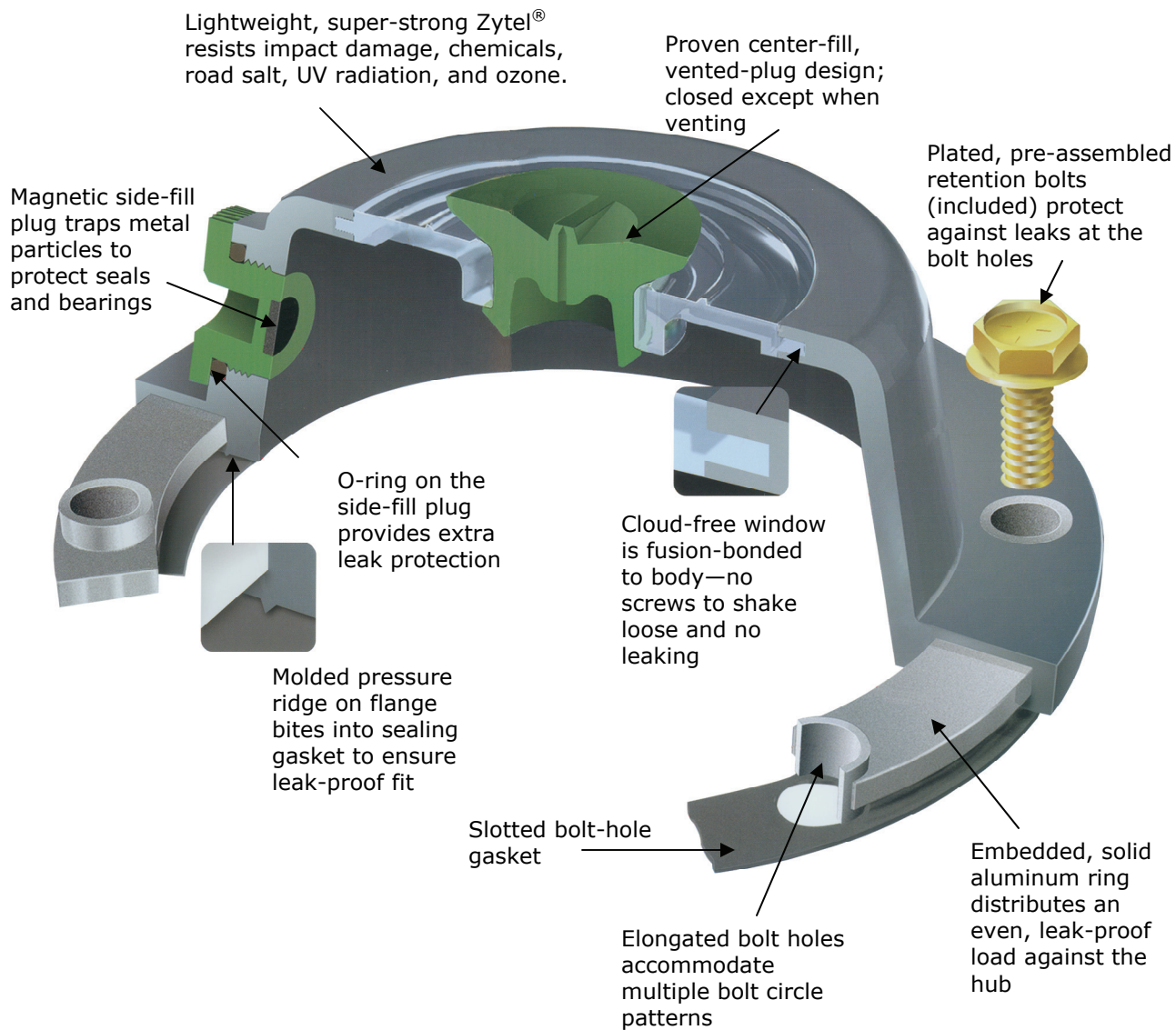
Hubcaps

- Inspect rubber components of hubcap.
- Remove center fill plug and flex.
 - Replace if not pliable or if vent does not open.
- Inspect side fill o-ring.
 - Remove side fill, remove o-ring and inspect for cracks and pliability.
 - Replace as needed.
- Inspect flange for flatness.
 - Replace hubcap as needed.

(See hubcap cutaway with call-outs on next page)

(cont.)

Putting wheel ends back in service-cont.



(cont.)



Putting wheel ends back in service-cont.

The following ATA TMC Recommended Practices contain additional information related to wheel end maintenance and service:

- RP624 Fundamentals of Lubrication
- RP644 Wheel End Conditions Analysis Guide

These may be found at: <http://www.atabusinesssolutions.com/p-20-ata-tmc-2008-2009-recommended-practices.aspx>

You can also find additional vehicle maintenance tips may also be found in SKF's Trouble Free Operation Guide #457975 which can be found on the VSM web site at: www.vsm.skf.com