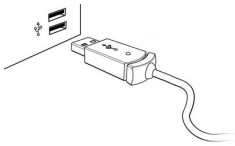
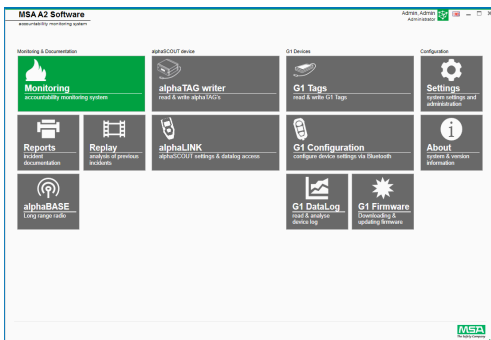


1. Connect the alphaTAG writer to the Computer



2. Change to alphaLINK module



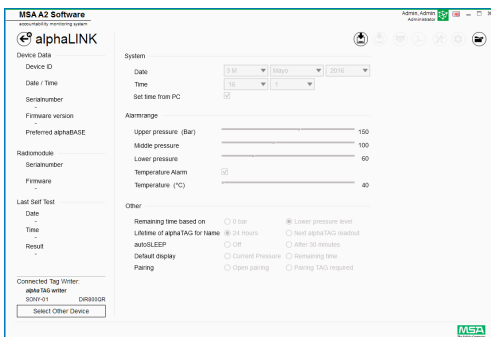
3. Press green button on alphaSCOUT until Data displayed



4. Press read out button on Software

Read firmware settings (depending on the installed firmware, some features might not be displayed)

5. Change setting for alphaTAG Lifetime



6. Write back information to alphaSCOUT

Transfer changes from computer to alphaSCOUT