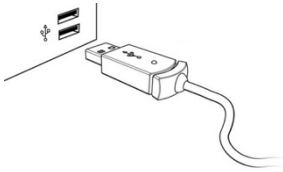
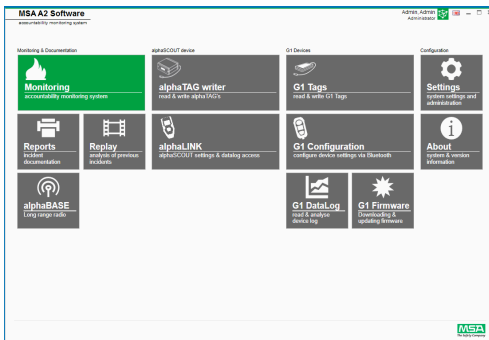


1. Connect the alphaTAG writer to the Computer



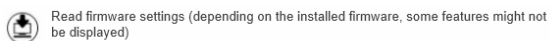
2. Change to alphaLINK module



3. Press green button on alphaSCOUT until Data displayed

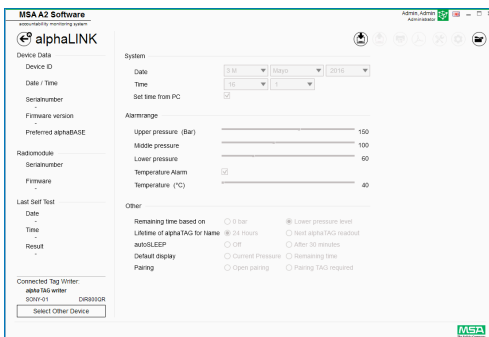


4. Press read out button on Software



Read firmware settings (depending on the installed firmware, some features might not be displayed)

5. Activate setting for autoSLEEP after 30 Minutes



6. Write back information to alphaSCOUT



Transfer changes from computer to alphaSCOUT