

SUPREMA® Control System

Innovation in gas measuring technology



Suprema Control System

Modular flexibility for individual solutions

The Suprema Control System offers the new standard in fire and gas measuring technology.

The Suprema System's modular redundancy design provides adapted flexibility to virtually any monitoring system and safety requirement.

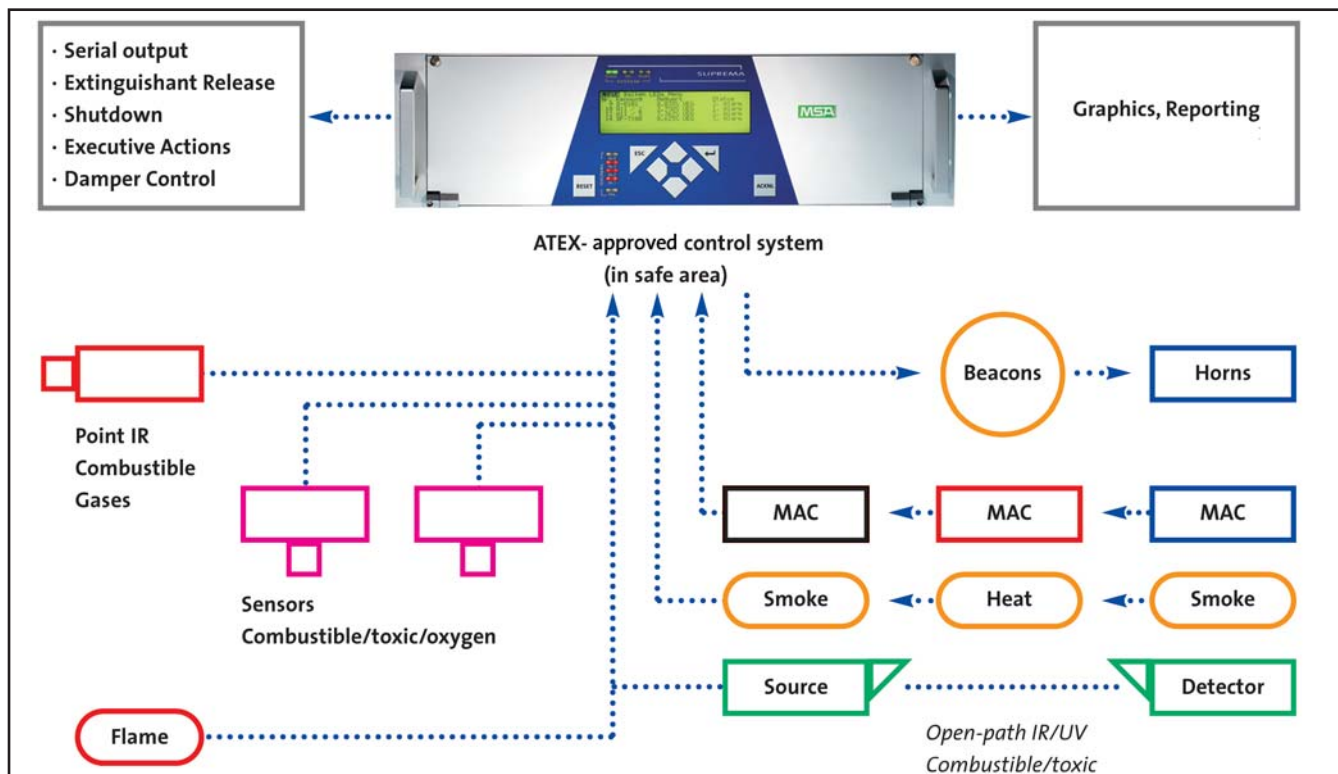
Designed around industrial 19" rack standards, the Suprema System offers signal processing for up-to 256 inputs and will provide up-to 512 relay and 4-20mA outputs.

The Suprema System is compatible with all of the MSA fire and gas products; including the **Ultima® X Series Gas Monitors**, the **SafEye Open Path Gas Detection System** and the **FlameGard® Flame Detector**. In addition, the Suprema System accommodates a variety of third-party devices such as 4-20 mA output sensors and heat and smoke sensors.

The Suprema Control System's modular, intelligent safety system is field configurable and provides a distributed bus technology ensuring fail-safe internal data transfer.

Features

- ➔ ATEX approved
- ➔ TUV approved SIL3 rating (IEC61508)
- ➔ Available in redundant system versions
- ➔ Receives 4-20mA output sensors; 2-wire and 3-wire
- ➔ Receives switched output sensors (smoke, fire, heat)
- ➔ Optional electrically-isolated analog outputs
- ➔ System and signal status LEDs
- ➔ User-friendly graphical user interface (GUI)
- ➔ Simple system operation with graphic display, text readouts, cursor keys and function keys
- ➔ Internal power supply (150W, 85-265 VAC)
- ➔ Battery connections for emergency power operation (24V)
- ➔ Interfaces to external Modbus and Profibus protocols

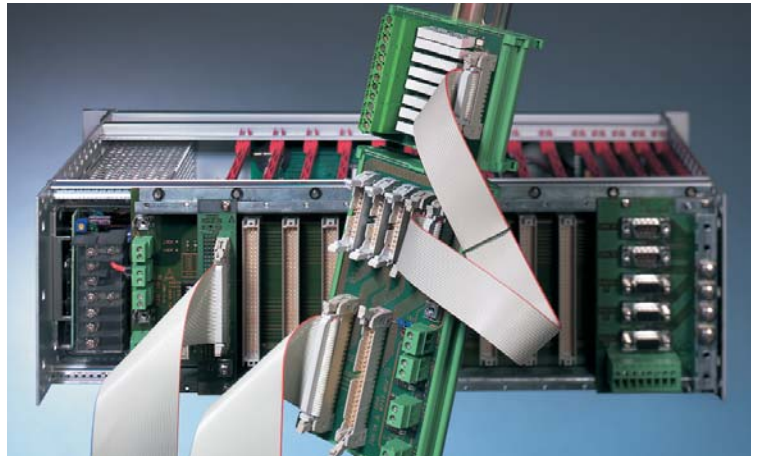


The Suprema Control System

provides a tailor-made control system ensuring fit, form and function that meet individual safety needs. The new modular system allows for I/O connections to be mounted to the back plane or rail mounted and can be configured as desired and adapted to meet each specific monitoring task.

The Suprema System is capable of controlling all system required functions, including inhibiting I/O, alarm-tripping analog signals, handling I/O faults, managing voting allocation of status signals and switched outputs, control of annunciation panels and other outputs devices such as fans and dampeners, along with interfacing to other systems (HVAC, ESD, etc.) through digital buscommunications.

The digital bus technology ensures reliable communication between racks and allows for system flexibility with satellite monitoring racks – up to 8 per system – to be located at distances up-to 1 mile apart. This provides the most flexibility and ensures system wiring is minimized and overall system costs are as low as possible. The Suprema System also interfaces to external bus systems such as Modbus and Profibus.



Modular flexibility for individual solutions

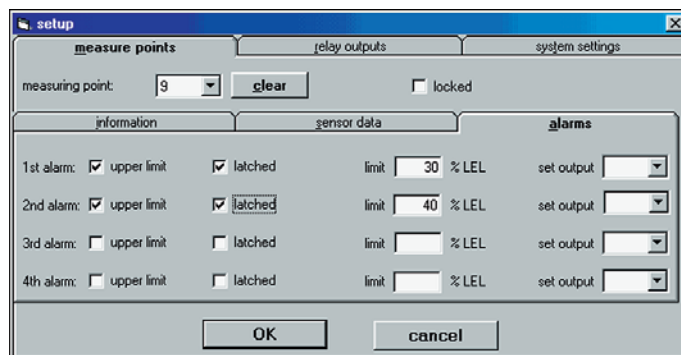
Benefits

- ➔ Space-saving compact modular design
- ➔ Easy installation with plug-in ribbon cables
- ➔ Flexible planning with integrated modules
- ➔ Straightforward system expansion
- ➔ Simple mouse-click configuration for voting, alarm grouping and multiple task activations
- ➔ Minimal cost of ownership



- Large control keys
- Large graphic back-lit display with plain-text readout
- Easy-to-see LED arrays for system and input status

- Menu-driven, self-explanatory user interface
- Detailed diagnosis and event recording
- Simple parameter setting and calibration



System configuration can be done at the Suprema panel with the function keys or through a menu-driven PC interface.

Safety System Solutions

Fire and Gas Systems to Suit Virtually Any Safety Philosophy



MSA designs, builds and integrates fire and gas detection systems – providing reliable turn-key solutions for projects of any size. MSA can offer stand-alone or integrated solutions tailored to your specific safety philosophy and plant requirements.

Select the appropriate method for your needs – a simple system or one with double or triple redundancy. The extensive experience of MSA allows us to recommend the best combination of detectors, field devices, components and systems to meet your safety needs.

Specifications

Operating	Temperature Range: 23° to 131° F (-5° to 55° C) Power (optional): 85 – 265 VAC, 50/60 Hz, 150W Humidity: 0 – 95% RH noncondensing
Relays	19.0 x 7.0 x 15.0 inches (48.2cm x 17.8cm x 38.1 cm) Switched outputs as open-collector driver (24V, 0.3A)
Key Features	System LED status indicator: Green (power), Orange (fail and inhibit) Signal LED status indicator: Red (four levels of alarm), Orange (fail) Signal processing for up to 64 inputs in one 19" rack Hot swap replacement Operating voltage range: 18-32V Key switch or password for secure access control Key operated switch for relay inhibit 2 x RS-232 electrically isolated interfaces for data transfer to PC/ laptop/ printer

Note: This bulletin contains only a general description of the products shown. While uses and performance capabilities are described, under no circumstances shall the products be used by untrained or unqualified individuals and not until the product instructions including any warnings or cautions provided have been thoroughly read and understood. Only they contain the complete and detailed information concerning proper use and care of these products.



Corporate Headquarters
P.O. Box 426, Pittsburgh, PA 15230 USA
Phone 412-967-3000
www.MSAnet.com

U.S. Customer Service Center
Phone 1-800-MSA-INST
Fax 724-776-3280

MSA Canada
Phone 1-800-MSA-INST
Fax 1-905-238-4151

MSA Mexico
Phone 52-55 21 22 5770
Fax 52-55 5359 4330

MSA International
Phone 412-967-3354
FAX 412-967-3451

Offices and representatives worldwide
For further information: