

SkyLink™ Stanchion

- FEATURE:** Lightweight stanchion weighs only 21 pounds.
- BENEFIT:** Easily installed, removed, and handled by 1 person
- FEATURE:** Only a 24 hour cure time required for pour-in-place Pigtail anchor (min. 3,000 psi concrete)
- BENEFIT:** Won't hold up a job or slow down your crew.
- FEATURE:** No tools required for installation when using pour-in-place anchor
- BENEFIT:** Easy to install - sets up in minutes!

- FEATURE:** Stanchion can be used as single point anchor attachment
- BENEFIT:** Provides fall protection for workers while installing horizontal lifelines
- FEATURE:** Offers two installation methods to concrete, a pour-in-place anchor for new construction or Hilti bolts for existing construction
- BENEFIT:** The SkyLink Stanchion has the versatility to meet the requirements of your application

- FEATURE:** Detachable feet
- BENEFIT:** Feet can remain attached to structure in applications where repeated access is required

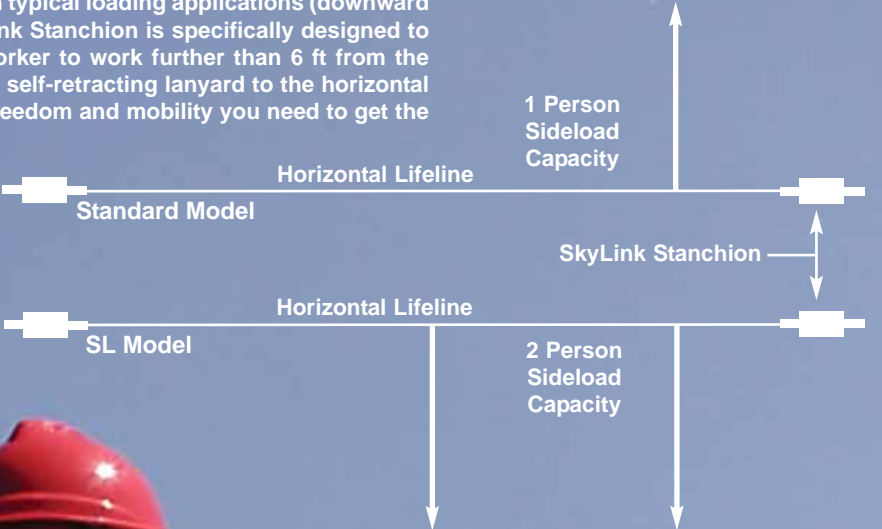
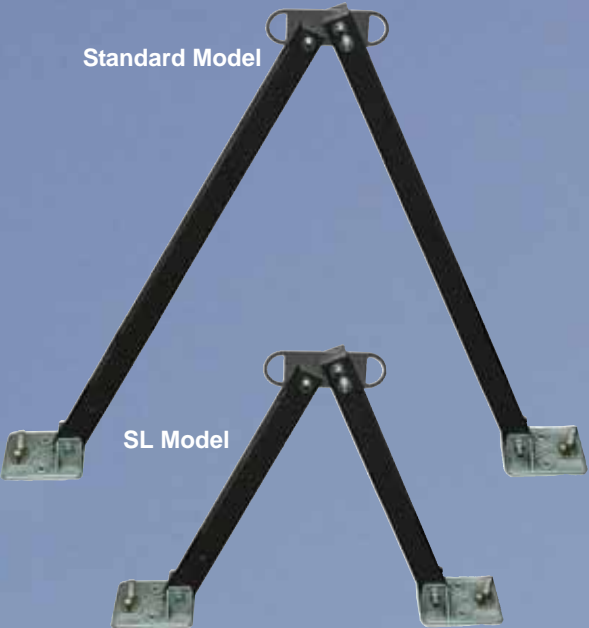
- FEATURE:** Aluminum and steel construction
- BENEFIT:** Increases durability to ensure long service life

- FEATURE:** Folding leg stanchion design
- BENEFIT:** Easy to carry and convenient to store

- FEATURE:** No tie-back line required
- BENEFIT:** Reduces trip hazards

SkyLink™ Sideload Capabilities

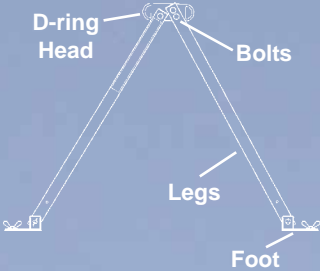
Only the SkyLink Stanchion offers the versatility you need for your concrete work environments. In addition to both models being rated for two workers in typical loading applications (downward direction working 6 ft or less from the lifeline) the Skylink Stanchion is specifically designed to handle fall arrest forces from the side, allowing the worker to work further than 6 ft from the horizontal lifeline. This means that you can attach your self-retracting lanyard to the horizontal lifeline and walk away in any direction, giving you the freedom and mobility you need to get the job done.



Designed to support horizontal lifelines in two directions (in-line with D-ring head)



Can be used as single point anchor while connecting lifeline



SkyLink™ Stanchion Specifications

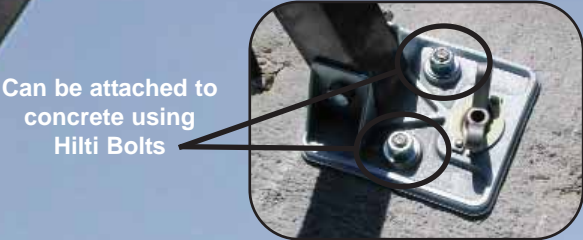
- D-RING HEAD:** (FALL ARREST ATTACHMENT ELEMENT)
- Minimum Breaking Strength:** 5,000 pounds (22.2 kN)
- Dimensions:** 9" X 3" X 1/4"
- Material:** Steel
- LEGS:**
- Minimum Breaking Strength:** 5, 000 pounds (maintains minimum 2:1 Safety Factor in all directions of intended loading)
- Dimensions:**
- Standard model:** 44" X 2" X 2"
- SL model:** 23" X 2" X 2"
- Material:** Aluminum
- FOOT:**
- Minimum Breaking Strength:** 5,000 pounds (22.2 kN)
- Dimensions:** 6-1/2" X 6" X 2-5/8"
- Material:** Zinc coated Steel
- Speed Nut Material:** Stainless Steel
- Speed Nut Retainer Material:** Zinc coated Steel

- BOLTS:**
- Minimum Breaking Strength:** 5,000 pounds (22.2 kN)
- Material:** Steel, Grade 5 or better

- WEIGHT:**
- Standard model:** 21 pounds
- SL Model:** 17 pounds

Ordering Information

PART NO.	DESCRIPTION
10055659	Skylink Stanchion, Standard model - 44" height (pour-in-place Pigtail or HILTI anchors must be ordered separately)
10055660	Skylink Stanchion, SL model - 23" height (pour-in-place Pigtail or HILTI anchors must be ordered separately)
10055721	3.25" HILTI anchor with nut and washer
10059805	0.5" x 12" pour in place "Pigtail" anchor with washer and vinyl cap
10059806	Skylink Stanchion Kit including 2 - Standard stanchions with 60' 2- worker Dyna-Line 10013151 (without anchor straps) and 4 Pigtail anchors
10059807	Skylink Stanchion Kit including 2 - Standard stanchions with 60' Sure-Line for Iron Workers (p/n SHL2009060IW), and 4 Pigtail anchors
10059808	Skylink Stanchion Kit including 2 - SL stanchions with 60' 2- worker Dyna-Line 10013151 (without anchor straps) and 4 Pigtail anchors
10059809	Skylink Stanchion Kit including 2 - SL stanchions with 60' Sure-Line for Iron Workers (p/n SHL2009060IW), and 4 Pigtail anchors



Can be attached to concrete using Hilti Bolts



Can be attached to concrete using integral Speed Nut and Pig-tail anchor

Two possible methods of securing stanchion feet to concrete

Easy to Use

Accommodates two workers per system

Versatile & Economical

Meets OSHA and ANSI requirements

TEMPORARY HORIZONTAL LIFELINES FROM MSA

Designed for easy installation and removal, these temporary horizontal lifeline systems were created for a wide range of applications. The system may be mounted to any suitable 5,000 lb rated anchorage.

TEMPORARY SYNTHETIC HORIZONTAL LIFELINES



Sure-Line Temporary Horizontal Lifeline for Two Workers
Part No. SHL1009060BLK



Dyna-Line Temporary Horizontal Lifeline
for Two Workers Part No. 10013152

TEMPORARY CABLE HORIZONTAL LIFELINES

Sure-Line Steel Cable System
Part No. SHL2009040



Sure-Line Iron Worker
Cable System
Part No. SHL2009040IW



Ordering Information

Part No.	Description
10013150	Dyna-Line Temporary Horizontal Lifeline for single worker, 30 ft rope
10013151	Dyna-Line Temporary Horizontal Lifeline for single worker, 60 ft rope
10013152	Dyna-Line Temporary Horizontal Lifeline for two workers with integral shock absorber, two (2) polyester anchorage straps, 30 ft rope
10013153	Dyna-Line Temporary Horizontal Lifeline for two workers with integral shock absorber, two (2) polyester anchorage straps, 60 ft rope
SHL1009060BLK	Sure-Line Temporary Horizontal Lifeline for Two Workers with integral shock absorber, two (2) anchorage cable slings, 60 ft black rope, and storage bag
SHL2009060	Steel Cable Horizontal Lifeline System for Two Workers with turnbuckle and integral shock absorber, two (2) anchorage cable slings, 60 ft (18 m) of 6X36 galvanized cable
SHL2009060IW	Iron Worker Cable Horizontal Lifeline System for Two Workers with integral shock absorber, without turnbuckle, 60 ft (18 m) of 6X36 galvanized cable

Note: This Bulletin contains only a general description of the products shown. While uses and performance capabilities are described, under no circumstances shall the products be used by untrained or unqualified individuals and not until the product instructions including any warnings or cautions provided have been thoroughly read and understood. Only they contain the complete and detailed information concerning proper use and care of these products.



ID 2300-81 /August 2004
© MSA 2004 Printed in U.S.A.

Corporate Headquarters
P.O. Box 426, Pittsburgh, PA 15230 USA
Phone 412-967-3000
www.MSAnet.com

U.S. Customer Service Center
Phone 1-800-MSA-2222
Fax 1-800-967-0398

MSA International
Phone 412-967-3354
Fax 412-967-3451

Offices and representatives worldwide
For further information:



SkyLink™ Stanchion

