

# MSA Latchways Personal Rescue Device® (PRD®)

Integrated harness system for self rescue



*Because every life has a **purpose...***



## MSA Latchways Personal Rescue Device® (PRD®)

*MSA has revolutionized the rescue process with the development of the Latchways PRD – an integrated harness system allowing self-rescue. The lightweight, unobtrusive rescue device is contained in a small ‘backpack’ attached to a full body harness and is designed to be used in conjunction with a fall protection system or anchor point.*

*In the event of a fall the Latchways PRD harness suspends the user and then allows a gentle lowering to the ground in a controlled descent. The device features a 20 m spool of Aramid rope which is released at a controlled rate through an integral braking mechanism. The innovative design uses quality components and a limited number of moving parts to enable 100% mechanical integrity.*

### The Need for a Rescue Plan

There is a legal obligation to have a full and comprehensive rescue plan in place when individuals are working at height.

# MSA Latchways Personal Rescue Device (PRD)

## Ease of Use

The PRD's patented components have been designed to fit neatly into the 'backpack' to ensure the worker can safely go about their daily work. The backpack zips onto the harness so that it becomes part of everyday wear for those who work at height. The harness is lightweight and unobtrusive but also robust, ensuring it can withstand the rigours of the harshest working environments.



### Rescue Benefits

- Significantly reduces rescue time
- Always available
- Self-activated
- Intuitive use
- Clear rescue plan
- Improves user safety



## The Latchways PRD range

The Latchways PRD range now also includes the Workman Premier and Workman Utility Full-body Harnesses.



Latchways PRD  
Workman Premier  
Full-body Harness



Latchways PRD  
Workman Utility  
Full-body Harness

## Rescue Pole

The Latchways Rescue Pole is designed to be used by a third party. Should the user be unable to conduct a self-rescue, the third party can activate the Latchways PRD's built-in secondary descent release mechanism. The overall length of the pole is 800 mm when retracted and 3400 mm when extended.



# Minimal Training and Fast Rescue

## User Training

Unlike all other rescue kits, no specialist training is required as the Latchways PRD is worn in place of a standard full body harness and activation is achieved by simply pulling the release cord.

## Pre-use Checks

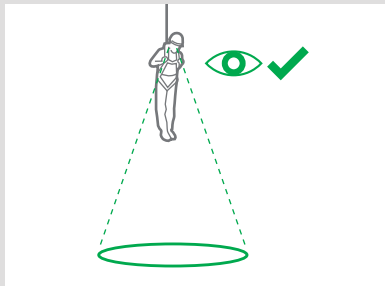
The Latchways PRD has been designed to be user-friendly so pre-use checks are minimal. The descent device, harness and backpack should be checked for any signs of:

- use (a descent has been performed)
- damage
- corrosion
- chemical attack

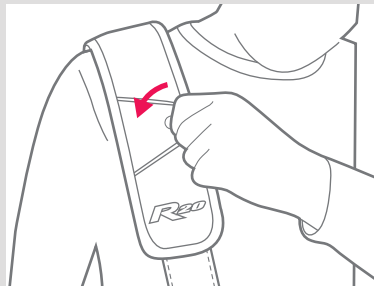
Periodic examination is required at least annually or more frequently to adhere with corporate PPE inspection schedules.



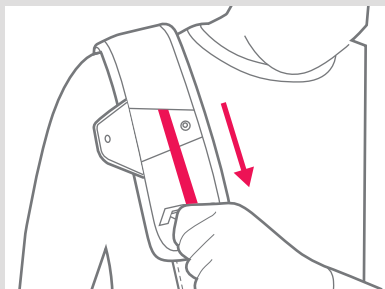
## User Instructions



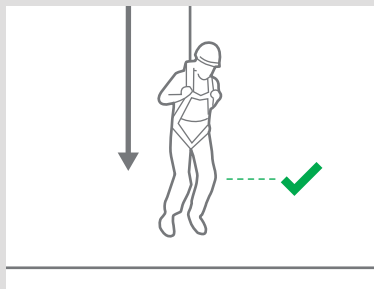
- ① Check the ground below to ensure descent path is clear and a safe landing is possible.



- ② Open the flap on the right shoulder strap to access the release cord.



- ③ Pull sharply on the release cord.



- ④ Prepare for landing by bending knees.

## Key facts

**Descent Height:** 20 m

### Complete Weight

Workman Premier Harness: 1.3 kg

Workman Utility Harness: 1.5 kg

PRD rescue device: 2.6 kg

**User Weight:** 59–140 kg

**Descent Speed:** 0.5–2 m per second

**Secondary Release Mechanism:** Should the user not be able to rescue themselves, the device can be activated by a third party

**Component Parts:** Descent line made from Aramid rope (UHMwPE rope with Aramid overbraid)

**Training:** Minimal user training required – no annual user refresher training required

**Maintenance:** Periodic examination limited to a series of visual inspections carried out by a competent person (full instructions provided)

## Standards

The Latchways PRD consists of a full body harness and integral descender device that conforms to all required standards.

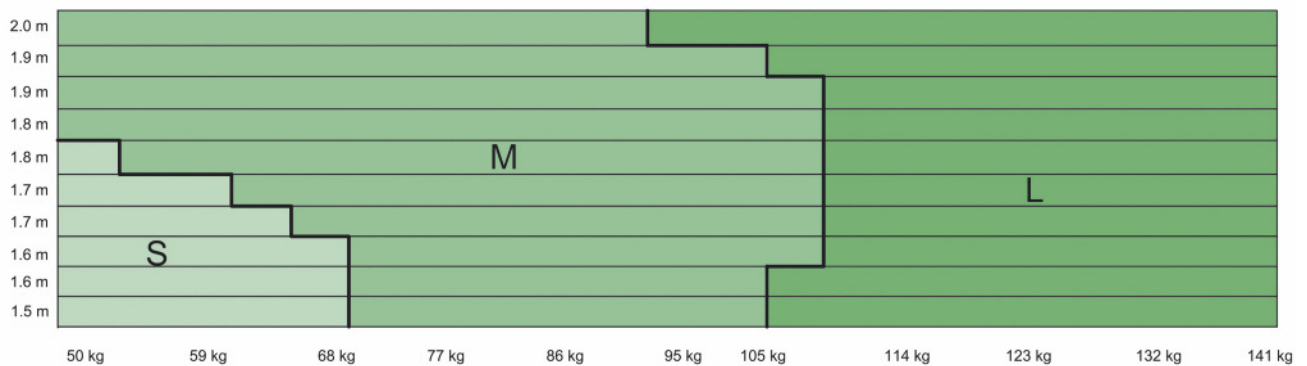
**The harness conforms to:**

- EN361:2002 and EN 358:1999 (depending on model)

**The descender device conforms to:**

- EN 341: 2011 Type 1, Class D

## Workman Harnesses Sizing Guide



## Ordering Information

PRD with Workman Premier Harness	Small	Medium	Large
Workman Premier, Qwik-fit leg straps	68215-00S	68215-00M	68215-00L
Workman Premier, Bayonet leg straps	68216-00S	68216-00M	68216-00L
PRD with Workman Utility			
Workman Utility, Bayonet leg straps	68217-00S	68217-00M	68217-00L





## Trust & Durability

---

For more than 100 years our passionate mission of safety empowers us, "The Safety Company", to protect lives.

We are committed to providing the latest in innovative, best-in-class safety solutions that feature integrated systems capability and allow our customers to return safely to their families and friends.

Every day our customers place their lives in our hands. In response, we provide them with protection they can trust, and their stories become our stories. Hand in hand we partner with our customers to earn that trust.

**At MSA, every life has a purpose.**

### Your direct contact



**MSA Australia**  
11 Columbia Way  
Baulkham Hills NSW 2153  
Customer Service: 1300 728 672  
Fax: (02) 9896 1835  
Email: [aus.customerservice@MSAsafety.com](mailto:aus.customerservice@MSAsafety.com)

**MSA New Zealand**  
Customer Service: 0800 441 335  
Email: [nz.customerservice@MSAsafety.com](mailto:nz.customerservice@MSAsafety.com)



Subject to change without notice  
ID 46-402.2 UK/01



For contact details of your local MSA affiliate, please visit our website.