

# Luminator Cap Lamp

Rugged Simplicity



In rough terrain and complete darkness, you need to rely on perfect vision. In 1914 MSA revolutionized the mining industry with the world's first electrical miner cap lamp. A century later we designed the **Luminator Cap Lamp** working hand-in-hand with miners in the roughest environments resulting in one of the most durable and high-performing cap lamp in the market place today.



*Because every life has a **purpose...***

# Ultimate Safety in the **Toughest Environments**

## Rugged Design

The Luminator Cap Lamp has one of the most rugged design in the market. The combination of impact-resistant polycarbonate and elastic over molded TPE ensures dust and water tightness meeting IP68 and can withstand multiple drops of 3 m on concrete without any loss of performance. All cable connections protect against bends and strains to provide everlasting light.

The maintenance-friendly headpiece, one of the smallest in the market, is equipped with a self-adjusting lens and an easy to find button to quickly switch between the three operation modes. The LED and the corrosion-free lens without any plating are float-mounted on the PCB to prevent mechanical stress.

## High Performance

The Luminator Cap Lamp features a high-performing, homogeneous LED light with extended walking light and a battery with more than 36 hours run time. The extremely bright LED light has the best color rendering index in the market. It emits no distracting halo rings and offers a consistent and superior light output – all with an unprecedented 2-year warranty.

## Increased Safety

With it's innovative cable management system, the Luminator Cap Lamp increases the safety of the worker while at the same time reducing maintenance time and costs. By adjusting the cable lenght to the comfort of the user and positioning the cable between the top and the side of the helmet, working accidents caused by cable hooking/cut or damage from the ceiling can be easily eliminated.

The extended walking light helps to reduce injuries due to trips and slips. With the warm working light, the user can easily find cracks and follow layers and seams.



## Applications

The Luminator Cap Lamp is designed and approved for use in mining and industrial applications up to Zone 0.

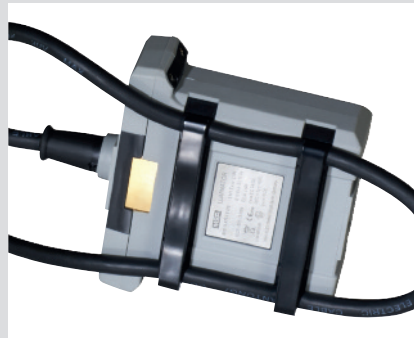
### Applications for mining market:

- Maintenance work
- Drilling
- Rock blasting
- Transportation
- Safety inspections
- Mine rescue

### Applications for industrial market:

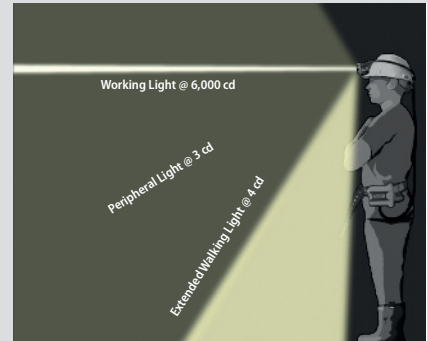
- Tunneling
- Underground construction work
- Confined space work (tanks, silos, etc.)
- Night-time work





### Cable Management

The unique cable management solution allows easy adjustment of the cable between 1 and 1.6 m length. The extremely safe and innovative cable positioning on the helmet prevents any damage to the cable that might occur due to varying height conditions. Furthermore, the positioning allows enough clearance to attach accessories, such as ear muffs, to your helmet.



### Light

#### Walking Light

The walking light illuminates the 2-step walking area in front of you reducing slip and trip accidents. Furthermore, it lights up your nearby work area decreasing the risk of high-intensity reflections.

#### Working Light

The Luminator lens generates a halo ring-free light through the combination of total internal reflection and refraction. The warm light enables easy identification of cracks in the ceiling and allows to follow layers and seams. The homogeneous and strong light ensures true color fidelity (CRI) in all circumstances.



### Battery / Run Time

Lithium Iron Phosphate is the latest and safest battery technology in the market today. Exceptional performance with a 36-hour run time and more than 1,000 re-charges ensures functionality even for unexpected underground stays and provides an emergency light for more than 100 hours after an 8-hour shift.



### RFID Tag

Every Luminator Cap Lamp is equipped with an IEC and ATEX approved RFID Tag on 13.56 MHz technology. This functionality integrates and enables access control and/or fleet management immediately.

Luminator Cap Lamp



## Technical Specifications

Head Piece	
Dimensions	64 x 65 mm (WxD)
Weight	< 160 g
Battery Pack	
Charging time 12 hours for a fully discharged pack, under 6 hours following a 12 hour shift.	
Type	LiFePO <sub>4</sub>
Width	119 x 111 x 41 mm (WxHxD)
Weight	≤ 550 g
Universal charge rack	5 VDC – 7VDC at up to 1 A
Light	
Narrow beam	≤ 8°
Intensity	6000 cd
Peripheral light	120°
Intensity	3 cd
Walking light	
Intensity	4.0 cd
Correlated Color Temperature (CCT)	4,000 K
Color Rendering Index (CRI)	> 93 %
Ingress Protection	IP 68
Cable length	1.60 m
Run time	36 h
Emergency light after 8 h shift	100 h

## Approvals

Directive 94/9/EC (ATEX)	
Type of protection	EN 60079-0:2012 EN 60079-11:2012
Marking	I M1 Ex ia Ma II 1G Ex ia IIC T4 Ga -20 °C ≤ Ta ≤ +60 °C
IECEx	
Marking	Ex ia I Ma Ex ia IIC T4 Ga -20 °C ≤ Ta ≤ +60 °C
SANS	
Marking	Ex ia I / IIC T4 -20 °C ≤ Ta ≤ +60 °C

## Ordering Information

Description	Part No.
Luminator, Cap Lamp, Heavy Duty	10155397
Single unit charger stand, Luminator	10153261
Single unit charger power supply, Luminator	10153262
Multi-station charger	Available in all markets. Call for quote



### Your direct contact

**MSA Australia – Head Office**  
MSA (Aust.) Pty. Limited  
137 Gilba Road  
Girraween NSW 2146  
Australia  
Phone Toll Free: 1300 728 672  
Fax (02) 9896 3224  
info.au@MSAsafety.com

**MSA Australia – Perth Office**  
MSA (Aust.) Pty. Limited  
4 Iron Road  
Malaga WA 6090  
Australia  
Phone (08) 9247 8900  
Fax (08) 9248 3287  
info.au@MSAsafety.com

**MSA New Zealand**  
The Gate, Unit E  
373 Neilson Street, Onehunga  
Auckland  
New Zealand  
Phone 0800 441 335  
Fax 0800 441 329  
info.nz@MSAsafety.com

**MSA International**  
1000 Cranberry Woods Drive  
Cranberry Township, PA 16066  
USA  
Phone +1-724-776-8626  
Fax +1-724-741-1559  
E-mail msa.international@MSAsafety.com