

MSA Latchways® Attachment Devices Operation & Selection Guide

Horizontal, vertical and inclined systems





Latchways Attachment Devices

All Latchways attachment devices are designed to connect the user, wearing a full body harness, to a Latchways cable system.

Common to all devices, patented starwheel mechanism rotates freely over intermediate cable supports and around corner brackets without need to disconnect the unit, allowing hands-free operation for system users.

Device types for varied applications

Horizontal use

Transfastener™
and Removable Transfastener



Vertical use

LadderLatch®
and TowerLatch®



Inclined use

ClimbLatch™



Other attachment device types for various applications are available. For more details visit www.latchways.com.

Horizontal Systems

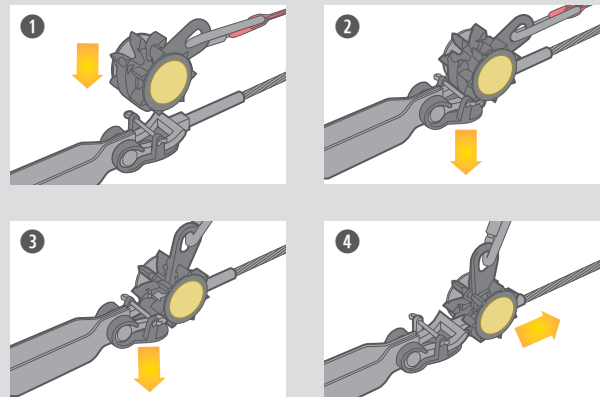
Transfastener and Removable Transfastener

- Universal device for use on all Latchways horizontal systems, suitable for both fall restraint and arrest systems.
- Incorporates unique starwheel, allowing unit to pass over cable supports and corners without need to detach.
- Connects to user at dorsal point.
- Transfastener requires specific entry point; Removable Transfastener can attach or detach at any safe point.



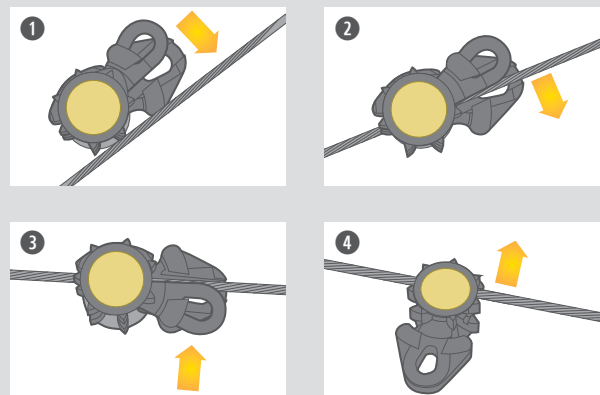
Connecting with a Transfastener

- 1 Specific entry terminal is required to connect Transfastener.
- 2 Rest device onto entry terminal and push slipper downwards through terminal fork. Plastic gate will push open to allow this action.
- 3 When slipper has passed underneath terminal, device can be pulled along cable.
- 4 With plastic gate closed, device is now fully connected and ready for use.



Connecting Removable Transfastener

- 1 Slide link cover to one side and move slipper to same side of unit.
- 2 Place unit onto cable so that cable is positioned between two starwheels and is also located within recess of link body.
- 3 Move link body and cover across to unit's other side, ensuring that slipper is fully engaged onto cable.
- 4 Removable Transfastener now hangs on cable and is safe for attachment.



Vertical Systems

LadderLatch and TowerLatch

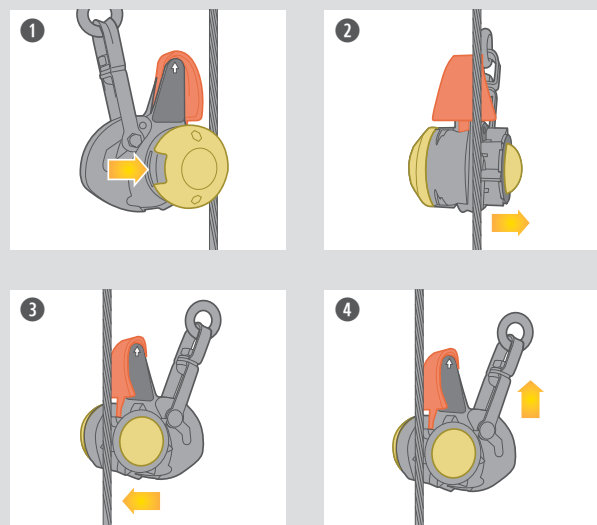
- Universal device for use on all Latchways vertical systems.
- Incorporates unique starwheel, allowing unit to pass over cable supports without need to detach.
- Anti-inversion mechanism; device cannot be connected to cable upside down.
- Connects to user at chest point.
- Able to attach or detach at any safe system point.
- In event of a fall, unit locks onto cable and arrests fall.

TowerLatch device has also been designed with integral webbing strap to provide fast post-fall rescue.



Connecting with LadderLatch or TowerLatch Device

- 1 With attachment links in vertical plane, press release catch on side of unit.
- 2 With your other hand, pull starwheel away from body of device.
- 3 Lift unit to cable and position cable to sit within device body cavity.
- 4 Remove your thumb from release catch. Allow starwheel to return to original position; this action locates cable correctly within device.



Vertical/Inclined Systems

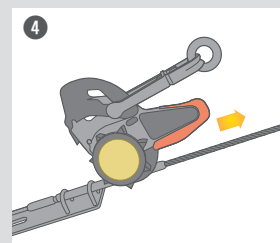
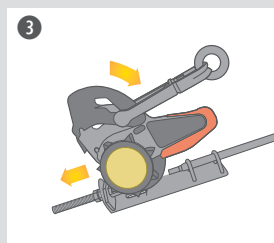
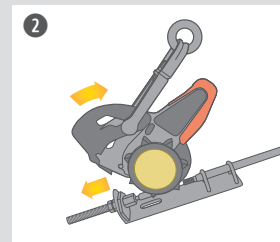
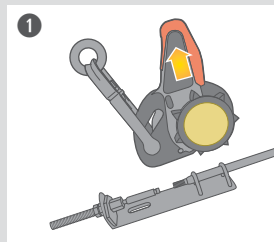
ClimbLatch

- ClimbLatch device has features similar to those of LadderLatch and TowerLatch, but is also designed for use on an inclined system—suitable for use between 0° and 40° incline.
- ClimbLatch requires specific entry point for system attachment.



Connecting with ClimbLatch Device

- 1 Specific entry terminal is required to connect ClimbLatch unit to system. ClimbLatch must be attached with arrow indicating correct direction of movement/incline.
- 2 Hold device in vertical plane to open unit; with entry point gate open, push slipper downwards through entry point gate.
- 3 When slipper has passed through gate, device can then be pulled along cable.
- 4 With gate closed, device is now fully connected and ready for use.





Our Mission

MSA's mission is to see to it that men and women may work in safety and that they, their families and their communities may live in health throughout the world.

MSA: Because every life has a purpose.

Note: This Bulletin contains only a general description of the products shown. While uses and performance capabilities are described, under no circumstances shall the products be used by untrained or unqualified individuals and not until the product instructions including any warnings or cautions provided have been thoroughly read and understood. Only they contain the complete and detailed information concerning proper use and care of these products.



ID 4600-026-MC / August 2016
© MSA 2016 Printed in U.S.A.

MSA – The Safety Company

MSA Singapore
MSA S.E Asia Pte Ltd
35 Marsiling Industrial Estate Road 3,
#04-01, Singapore 739257.
Phone: +65 6350 4500
Fax: +65 6350 4505
Email: msa.singapore@MSAsafety.com

MSA Indonesia
Kompleks Multiguna Kemayoran No 1-K
Jl. Rajawali Selatan Raya Block C5 No. 2
Jakarta Utara 14410, Indonesia
Phone: +62 21 6409 000
Fax: +62 21 641 2831
Email: msa.indonesia@MSAsafety.com

MSA Australia
11 Columbia Way
Norwest Business Park
Baulkham Hills NSW 2153
Phone: 1300 728 672
Fax: +61 2 9896 1835
Email: aus.customerservice@MSAsafety.com

MSA Malaysia
No.5, Jalan P4/8A, Crest Hill Industrial Park
Bandar Teknologi Kajang, Semenyih
43500 Selangor, Malaysia
Phone: +603 8724 8208/9208
Fax: +603 8724 2208
Email: msa.malaysia@MSAsafety.com

MSA New Zealand
Customer Service
Phone: 0800 441 335
Email: nz.customerservice@MSAsafety.com

MSA (Thailand) Ltd.
28th Floor Suntower Bldg. B, No. 2801
123 Vibhavadi-Rangsit Rd., Chompon
Chatuchak, Bangkok 10900, Thailand
Phone: +66 2617 8211
Fax: +66 2617 8214
Email: msa.thailand@MSAsafety.com

MSA Philippines
Unit 2309 Jollibee Plaza
Condominium Building
F. Ortigas Jr. Road, Ortigas Center
Pasig City, Philippines
Phone: +63 9209 742 191

For sales enquiry, contact us [here](http://MSAsafety.com).

MSAsafety.com