

[illegible]

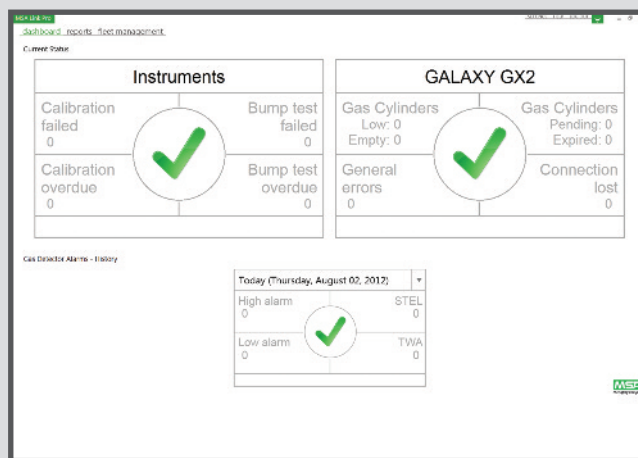
PRO

Because every life has a **purpose**...

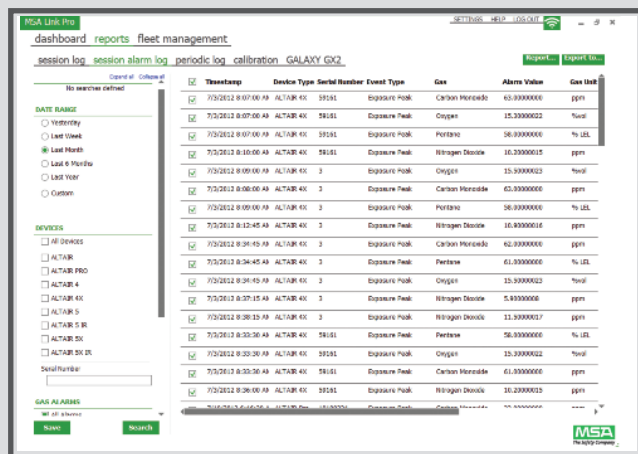
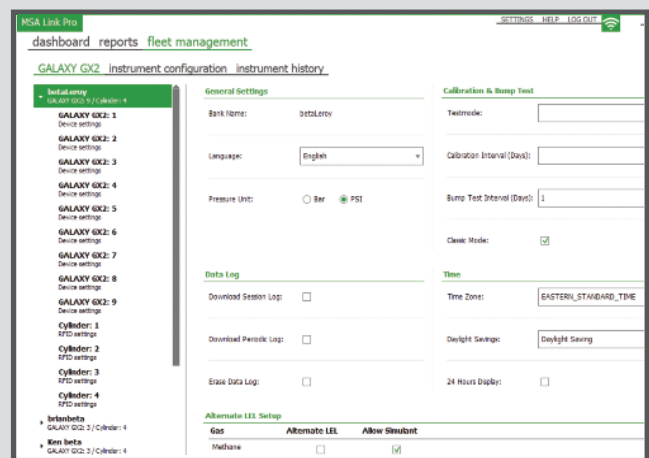
Proactive Safety: Keep Your Workers Protected

MSA Link Pro Software lets you easily and proactively manage your gas detection fleet. Program offers efficient setup and configuration with dashboard alerts as to all conditions, as well as calibration gas and expiration warnings. Query data, print or save reports including gas exposures incidents; system can be set up to automatically send email alerts. Generate session logs, including periodic as well as calibration and GALAXY® GX2 System bank data. Notifications could be triggered by Test Stand for live events and scheduled emails could be sent by an email service; both information would come from the LinkPro server.

View test and exposure data, session and periodic logs at a glance. Dashboard displays live status of GALAXY System test stand banks



System manages test stand configuration



Live filtering can be viewed, printed and saved as PDF document

GALAXY GX2 Test Report

Test Date/Time: 21 May 2012 02:57:08 PM

Test Type: Calibration

Instrument: ALTAIR 4X

Test Result: **Passed**

Serial Number: 14

GX2 S/N: 1

User: SAM

Company: Company

Department: ENG

Instrument Set Points:

Sensor	Low	High	STEL	TWA	Range
COMB	10 % LEL	20 % LEL	0 % LEL	0 % LEL	0-100 % LEL
O2	19.5 %vol	23 %vol	0 %vol	0 %vol	0-30 %vol
CO	25 ppm	100 ppm	100 ppm	25 ppm	0-2000 ppm
H2S	10 ppm	15 ppm	15 ppm	10 ppm	0-200 ppm

Test Results:

Sensor	Target Value	Found Value	Test Result	Notes
COMB	58 % LEL	58 % LEL	Passed	Methane as % LEL Pentane

Print and save detailed calibration, bump test and exposure reports

The MSA Commitment

From the latest in sensor technology to instrument design and manufacturing, MSA has the capabilities and expertise to support your portable gas detection challenges.

Four Easy Ways to Access Data

Dashboard – Live System View

Single-glance notification of instruments that are overdue for calibration or bump test

Reports – View at your convenience

Database storage of instrument Periodic and Session data logs and customizable reports

Email Alerts – Instant alerts

Email notifications of GALAXY GX2 System and instrument warnings and error messages

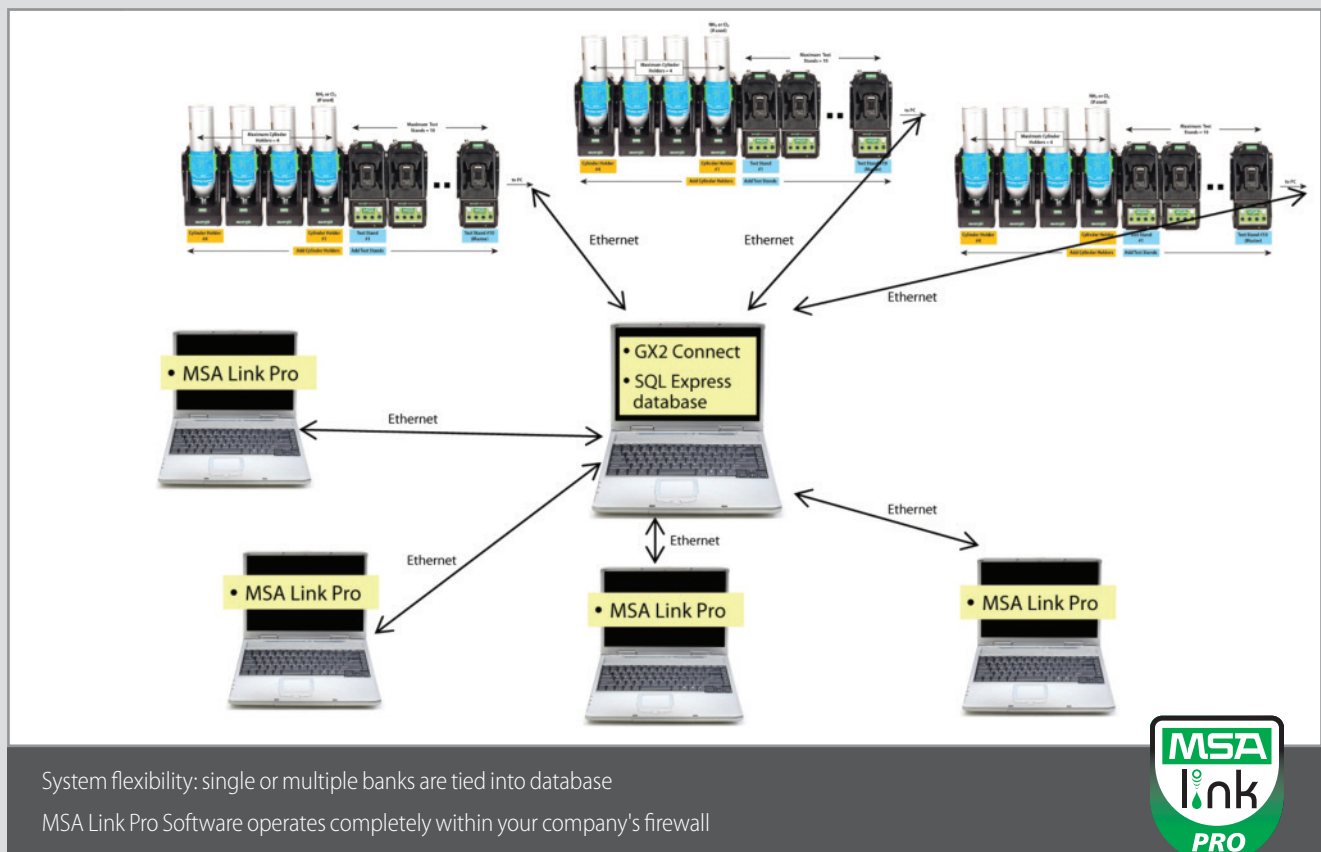
Fleet Management – Configure and Audit Systems

Configure banks, instruments and audits fleet settings



Setup, Network and User Flexibility

- System can be set up with either static or DHCP connections, offering wide flexibility.
- Access flexibility: administrator assigns several levels of user rights.
- Users can access software from any computer that is directed to main database.
- Database exists on one computer or server; multiple end user PCs can access database to use program.
- Network can be as simple as one test stand bank, one router and one laptop computer, or have one or many test stand banks exist within a corporate intranet structure.



What Makes MSA Stand Out

Save time with MSA's faster testing and calibration instruments. Save money with the reduced calibration gas use. Exceed 50% reduction in cost of ownership with MSA, where you see savings on calibration gas expense when combined with high-performance MSA XCell Sensors.

Stand-alone or networked

Networking is not required, and yet provides full functionality

Up to 10 test stands share 4 cylinders; and test all instruments simultaneously

Provides a flexible docking of instruments. Unlimited number of Banks. Limited only by the existing technologies. Manages virtually unlimited number of instruments

No annual subscription fee

No hidden fee

Data saved to client's own database

Customer manages its own data and security. Data are secured at its own premises

Internet connection is not required to operate

This eliminates issues in remote locations where Internet connection is still a problem or expensive.

Note: This bulletin contains only a general description of the products shown. While uses and performance capabilities are described, under no circumstances shall the products be used by untrained or unqualified individuals and not until the product instructions including any warnings or cautions provided have been thoroughly read and understood. Only they contain the complete and detailed information concerning proper use and care of these products.



ID 08-541.2 UK/00

Subject to changes without notice

MSA – The Safety Company

1000 Cranberry Woods Drive
Cranberry Township, PA 16066 USA
Phone 724-776-8600
www.MSAsafety.com

U.S. Customer Service Center

Phone 1-800-MSA-2222
Fax 1-800-967-0398

Pacific Asia Region

MSA Singapore

MSA S.E Asia Pte Ltd
35 Marsiling Industrial Estate Road 3,
#04-01, Singapore 739257
Phone: +65 6350 4500
Fax: +65 6350 4505

MSA Australia

Phone: 1300 728 672 / +61 02 9688 0333
Fax: +61 2 9896 1835

MSA Indonesia

Phone: +62 21 6409 000
Fax: +62 21 641 2831

MSA Malaysia

Phone: +603 8724 8208/9208
Fax: +603 8724 2208

MSA New Zealand

Customer Service
Phone: 0800 441 335

MSA Philippines

Phone: +63 9209 742 191

MSA Thailand

Phone: +66 2617 8211
Fax: +66 2617 8214

For sales enquiry, contact us [here](http://www.MSAsafety.com).