

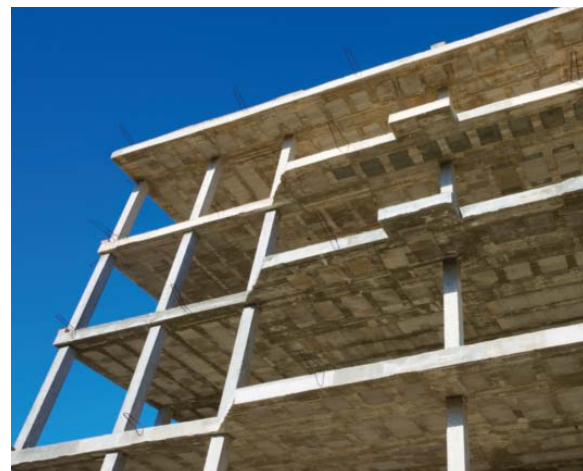
MSA Latchways® Leading Edge SRL

Self-retracting lifeline for horizontal and vertical use



Advanced fall protection for leading edge applications including roofing, wooden beams and leading edge construction.



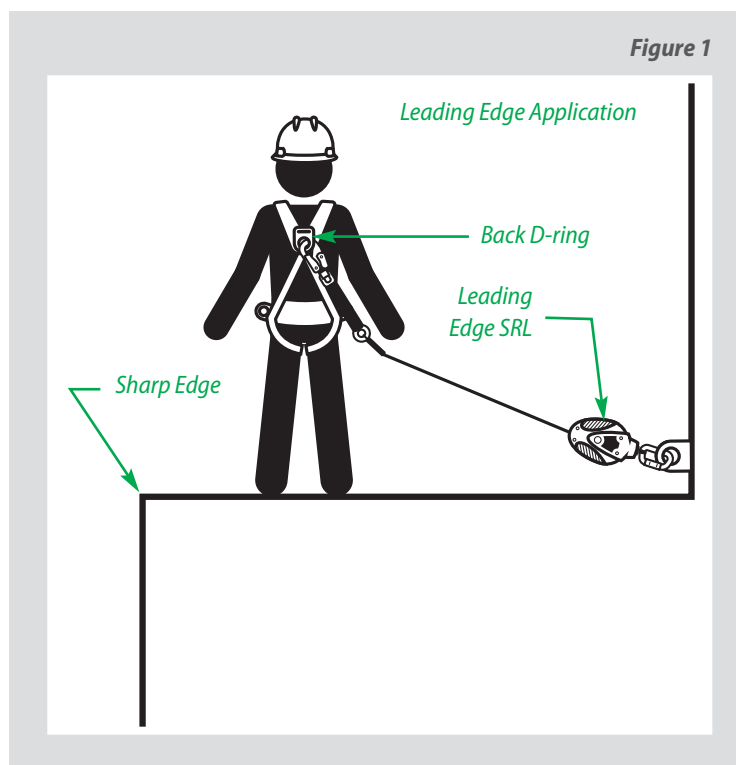


Understanding Leading Edge

Leading Edge vs. Sharp Edge

Leading Edge: A work practice where the SRL is anchored below the harness back D-ring and a fall potential exists over a *sharp edge*. Typically the SRL is mounted at foot level. (Figure 1)

Sharp Edge: Any edge that comes into contact with the lifeline and in the event of a fall, has the potential to cut the lifeline. SRL can be overhead or at foot level.



When to Use an LE SRL Compared to an Overhead SRL

- When it is possible for the line to come into contact with a sharp edge (Figure 2)
- When you need to anchor the SRL below the D-ring level of your harness (Figure 3)

Figure 2

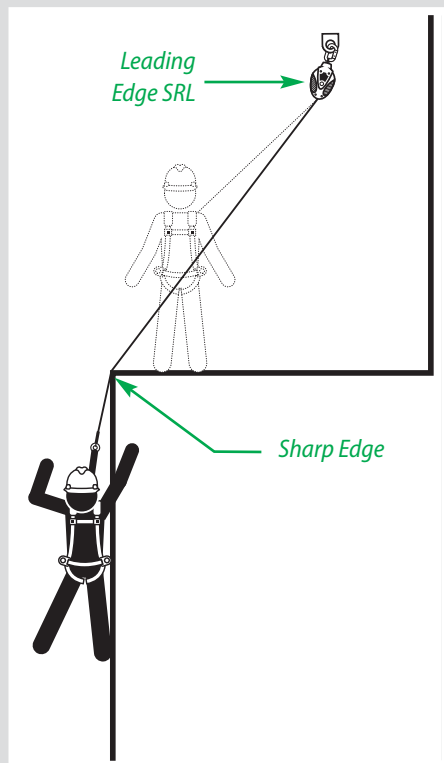


Figure 3

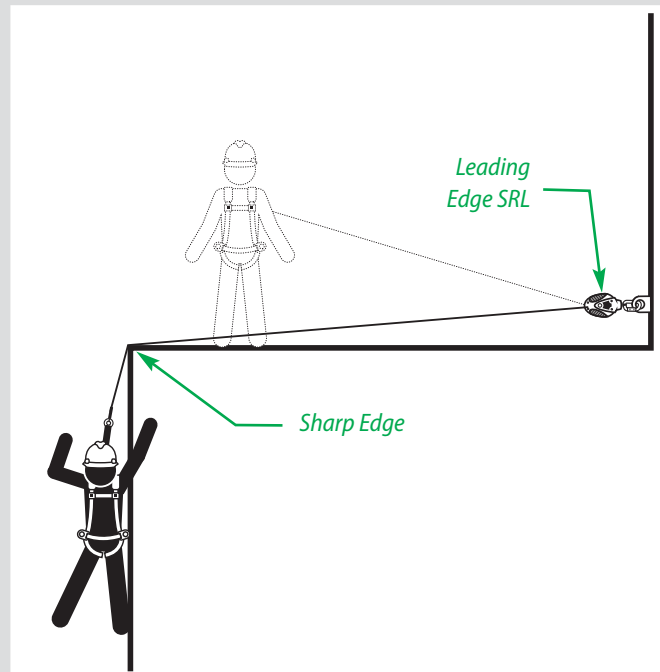
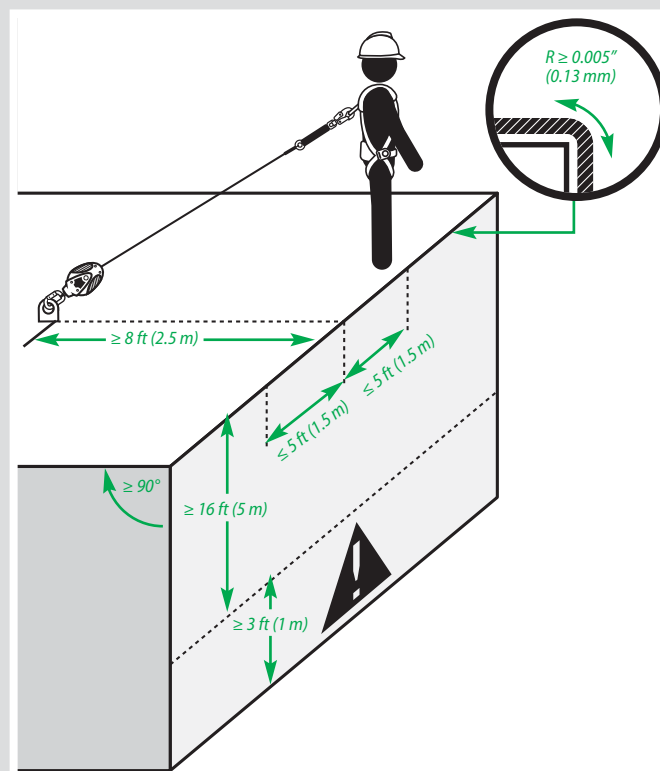


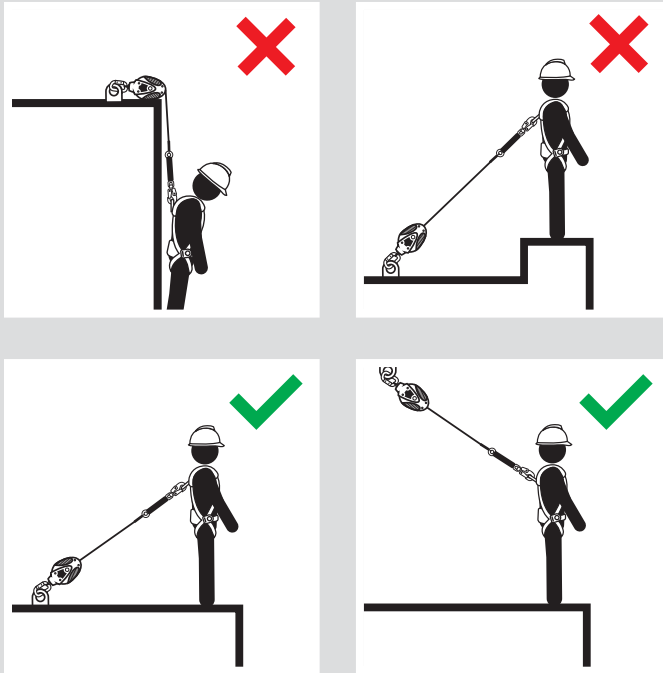
Figure 4



ANSI Z359.14 Test Criteria for Leading Edge (LE) SRLs

- Test must be performed over sharp edge material with radius of 0.005" (0.13 mm) or less.
- Leading edge test includes drop tests from different angles to ensure lifeline does not fail if it slides along sharp edge.
- User instructions and product labels must provide guidance as to product use in leading edge applications.
- An energy absorber is required and must be integral to SRL.

Figure 5



Be Aware of These Additional Hazards/Warnings When Using LE SRLs

- Set back distance if mounted at foot level (Figures 4 & 5)
- Fall clearance required if not directly overhead (Figure 6)
- Increased potential for swing hazards (Figure 7)

Figure 6

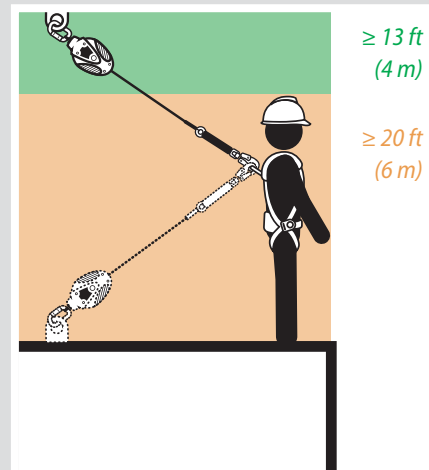
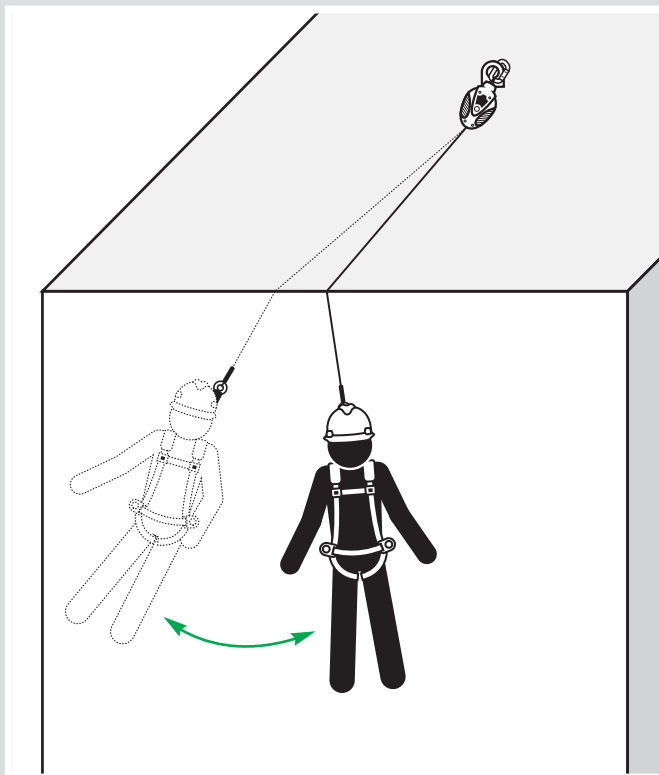


Figure 7



Common Applications and Materials for Acceptable Use

Use of the Latchways Leading Edge SRL is acceptable around the following applications and materials.

Applications:

- Roof decking
- Concrete decking
- Pre-cast bridge assembly
- Aerial lift work

Materials:

- Metal roofing materials
- Finished concrete with rounded edge
- Wood

Latchways Leading Edge SRL

Expansive mobility

With easy-to-use self-locking function, the Latchways Leading Edge SRL automatically extends and retracts during use for freedom to move over large working areas.

Reliable technology

Latchways Leading Edge SRL features patented Constant Force® technology controls the load in the event of a fall; Full Contact™ locking mechanism helps to ensure that the device will not freeze, hang up or corrode.

Versatile connection

Latchways Leading Edge SRL easily connects to many personal fall arrest systems for optimum compatibility with both vertical and horizontal applications.

Strong and tested

Compliant with strict MSA quality-control procedures, the Latchways Leading Edge SRL features a toughened case to prevent impact damage, plus advanced premium quality materials for superior resistance to corrosion and abrasion. Additionally, Latchways Leading Edge SRLs are third-party-tested for contact with a 0.005" (0.13 mm) radius steel edge.

The Latchways Leading Edge SRL has been tested to meet:

- ANSI Z359.14



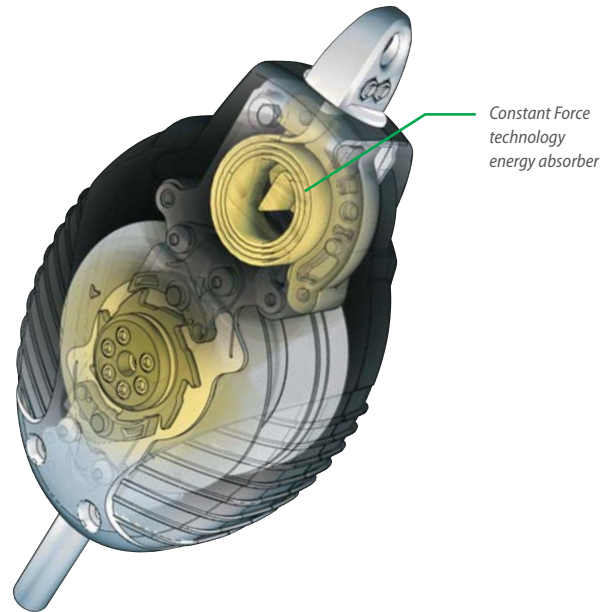
Latchways Leading Edge SRL

The trusted self-retracting lifeline for work on the edge

- 1 **Energy absorption**—integral, in-line, patented Constant Force technology energy absorber methodically absorbs force generated in a fall and gives true deployment indication.
- 2 **Manufacturer identification**—individually serial numbered to ensure full traceability.
- 3 **Color safety**—bright yellow toughened case resists impact damage to protect internal chassis and to stand out when used at foot level to minimize trip hazard.
- 4 **Thorough protection**—incorporates secondary unique shock pack to assist with energy absorption.

Materials

CASE	Impact modified nylon
PAWL & RATCHET MODULE	Stainless steel
CHASSIS	Stainless steel
MOTOR SPRING	Stainless spring steel
DRUM MODULE	Aluminum
FASTENERS	Stainless steel
CABLE	Ø 0.25" (6 mm) 7 x 19 galvanized cable
CF® ABSORBER MODULE	Stainless steel and impact modified nylon
SNAPHOOK	Forged steel/stainless steel
CONNECTING RING	Aluminum
SHOCK PACK	Polyester webbing with neoprene cover



Ordering Information

Part Number	Description	Length	Line Type	Size (L x W x D)	Net Weight	Weight Capacity
62707-00US	23 ft (7 m) Leading Edge Cable SRL	23 ft (7 m)	Ø 0.25" (6 mm) 7 x 19 galvanized cable	36.5" x 7.3" x 5" (927 x 185 x 127 mm)	13.2 lb (6 kg)	310 lb (140 kg)
62710-00US	33 ft (10 m) Leading Edge Cable SRL	33 ft (10 m)	Ø 0.25" (6 mm) 7 x 19 galvanized cable	38" x 8.5" x 5" (965 x 216 x 127 mm)	17.6 lb (8 kg)	310 lb (140 kg)

Our Mission

MSA's mission is to see to it that men and women may work in safety and that they, their families and their communities may live in health throughout the world.

MSA: Because every life has a purpose.

Note: This bulletin contains only a general description of the products shown. While uses and performance capabilities are described, under no circumstances shall the products be used by untrained or unqualified individuals and not until the product instructions including any warnings or cautions provided have been thoroughly read and understood. Only they contain the complete and detailed information concerning proper use and care of these products.



ID 4600-014-MC / October 2016

© MSA 2016 Printed in U.S.A.
Subject to changes without notice

MSA – The Safety Company
1000 Cranberry Woods Drive
Cranberry Township, PA 16066 USA
Phone 724-776-8600
www.MSAsafety.com
U.S. Customer Service Center
Phone 1-800-MSA-2222
Fax 1-800-967-0398

Pacific Asia Region
MSA Singapore
MSA S.E Asia Pte Ltd
35 Marsiling Industrial Estate Road 3,
#04-01, Singapore 739257
Phone: +65 6350 4500
Fax: +65 6350 4505

MSA Australia
Phone: 1300 728 672 / +61 02 9688 0333
Fax: +61 2 9896 1835

MSA Indonesia
Phone: +62 21 6409 000
Fax: +62 21 641 2831

MSA Malaysia
Phone: +603 8724 8208/9208
Fax: +603 8724 2208

MSA New Zealand
Customer Service
Phone: 0800 441 335

MSA Philippines
Phone: +63 9209 742 191

MSA Thailand
Phone: +66 2617 8211
Fax: +66 2617 8214

For sales enquiry, contact us [here](http://www.MSAsafety.com).

MSAsafety.com