



Calibration Kit

P/N 32575-x

The portable purge calibrator is a compact, accurate and safe system containing a non-explosive gas concentration. The lecture bottle is filled with a standard 50% LEL mixture of gas/air. Using a known gas/air mixture reduces the likelihood of error in field calibration. The hose and cup adapter (P/N 32554-1) that are included allow for quick calibrations and gas checks. Premixed calibration gases at approximately 50% LEL are available in lecture bottles.

Butane	C ₄ H ₁₀	Methane	CH ₄
Ethane	C ₂ H ₆	Pentane	C ₅ H ₁₂
Ethylene	C ₂ H ₄	Propane	C ₃ H ₈
Hexane	C ₆ H ₁₄		



Remote Gas Calibrator

P/N 32541-1

The remote gas calibrator, RGC-IR, is designed to be permanently installed on an IR gas detector. The RGC-IR provides protection from outside elements and allows the user to apply calibration gas (@ 50 psi) to the detector from a remote source. See RGC-IR manual for specifications.





Splash Guard

P/N 32545-1

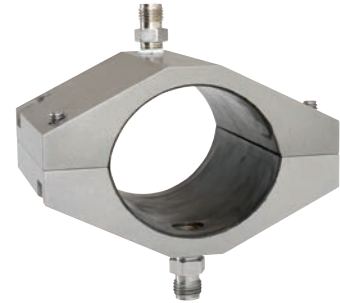
The IR Splash Guard protects the sensor cavity from water spray, wind, and dust.



Rain Guard

P/N 31545-1

The IR Rain Guard is recommended for installation where the IR detector is directly exposed to the elements or where frequent drenching with water is practiced, such as offshore platforms.



Flow Block (P/N 31420-1)

P/N 31420-1

Flow block assembly can be used to connect the IR400 to a gas sampling system.



Duct Mount Kit

P/N 31483-1

The Duct Mount Kit is used to mount IR detectors in HVAC systems, turbine intakes, and other air handling applications.



Zero Switch Junction Box

P/N 31305 – CSA
P/N 31421 – ATEX

The junction box used with the IR400 is fitted with or without a zero switch for baseline zeroing or calibration.

P/N 31305-1 is pictured with zero switch.

Note: This Bulletin contains only a general description of the products shown. While uses and performance capabilities are described, under no circumstances shall the products be used by untrained or unqualified individuals and not until the product instructions including any warnings or cautions provided have been thoroughly read and understood. Only they contain the complete and detailed information concerning proper use and care of these products. Specifications subject to change without notice.



ID 1465-016-MC / Nov 2017

© MSA 2017 Printed in U.S.A.

Corporate Headquarters:
MSA – The Safety Company
1000 Cranberry Woods Drive
Cranberry Township, PA 16066
United States
+1-724-776-8600
info.us@MSAsafety.com

Design Center:
General Monitors
26776 Simpatca Circle
Lake Forest, CA 92630
United States
+1-949-581-4464
info.gm@MSAsafety.com

Additional locations can be found on our web site:
www.MSAsafety.com