

# INTEGRATED TIC QUICK START GUIDE

## Power on the G1 SCBA

### TO BEGIN:

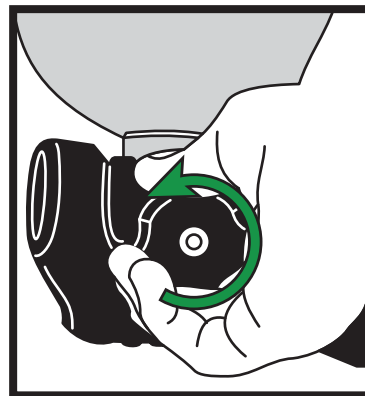
Insert the G1 battery into the Backplate & Power Module Assembly



**Note:** For options 1 and 2, the G1 battery must be installed

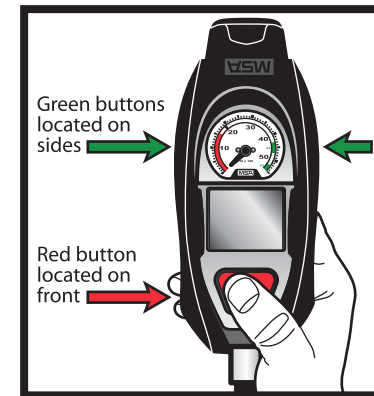
### OPTION 1:

Pressurize the SCBA



### OPTION 2:

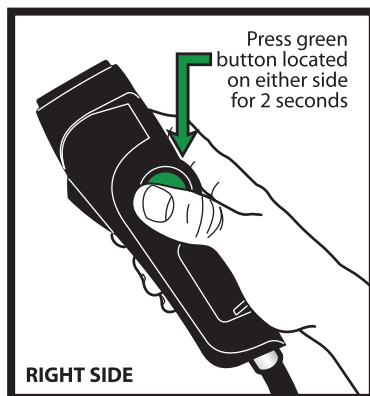
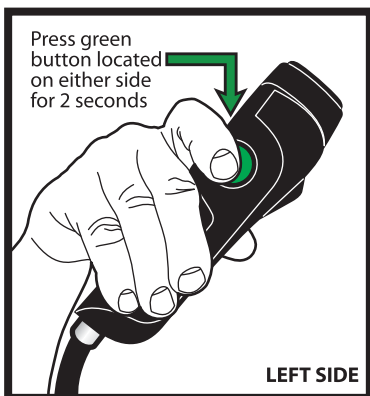
Press & hold the red manual alarm button



**Note:** To clear the alarm double press the green buttons

## Enter / Exit TIC Mode

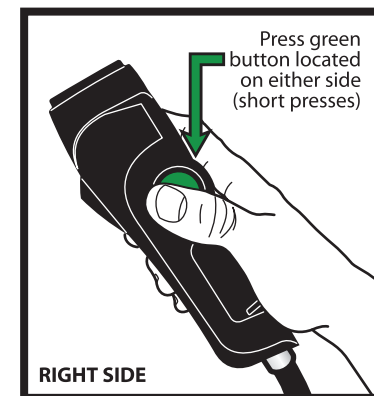
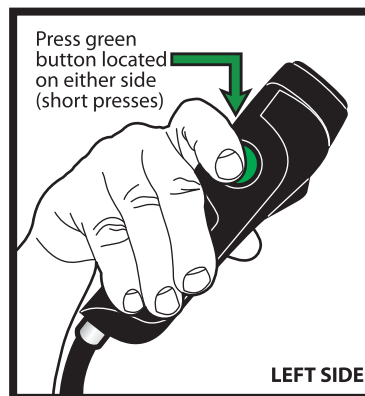
Enter or Exit TIC mode by pressing & holding either of the 2 green buttons (long press for approximately 2 seconds)



**Note:** G1 can be configured to enter TIC Mode automatically when the SCBA is powered on via the A2 Software. Powering off the G1 SCBA will also exit TIC Mode

## Changing TIC Palettes

When in TIC mode, change palettes by pressing either of the 2 green buttons (short presses)



**Note:** Integrated TICs are preconfigured with 5 default palettes; alternative palettes and palette order can be configured via the A2 Software