




F2 TREM[®] Helmet

[Advanced Protection Helmets]

[Hazardous Environment Protection]

The mountaineer version of the F2  TREM[®] is a great compromise between lightness and mechanical performance : lightness is necessary while climbing to reach hazardous areas to find the people to rescue, while shock and penetration performance is critical to protect the wearer from all unexpected hazards (fall, falling rocks). The high comfort retention system truly makes the helmet a part of the rescue person, eliminating any inconvenience. Fitted with additional protection equipment (eye or face protection, hearing protection, communication system), it is the best available solution when facing great rescue operations and all hazardous challenges.

MSA GALLET



GA3300 [Hazardous Environment Protection]

[Application]

High angle Rescue in mountain environment
 Rescue Operations after **natural disaster**
 Forest work operations after storm

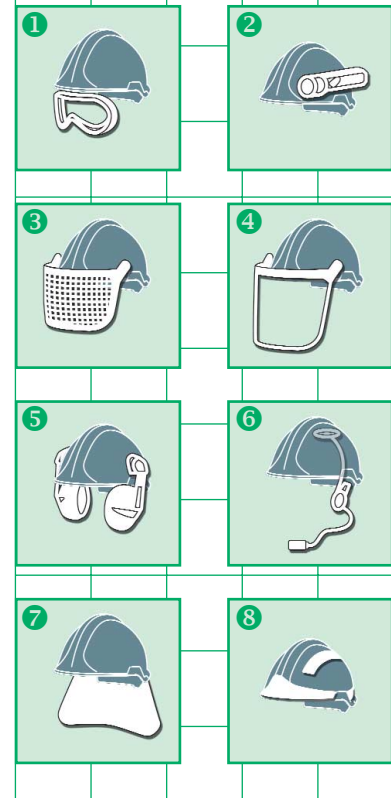


[Technical specifications]

Product Reference	GA3300*xx (according to color)
Certifications	EN12492 : 2000
Outer shell	Vented, Injected high temperature thermoplastic material
Cradle	Quick adjustment, high comfort Ratchet patented cradle
Chinstrap	3 point non fire chinstrap with integrated chincup
Head Sizes	52 to 64 cm
Weight	650 g (± 30 g)
Available colors	White, red, yellow, orange fluo, black, blue, green, grey, yellow fluo, photoluminescent

[Options and Accessories]

1 Protection goggles (EN166)	GA3007NA (clear) GA3007OB (tinted)
2 XP Lamp with adapter	GA1457 + GA1426
3 Mesh Visor (EN1731)	SOR60060 (metal mesh) SOR60065 (nylon mesh)
4 Clear Visor (EN166)	SOR60040 (length 20 cm) SOR60041 (length 16 cm) SOR60042 (length 10 cm)
5 X-TREM Hearing protection	SOR12015 (EN352-3)
6 Communication system	GA103xxxx (Micro systems) GA102xxxx (Osteo systems)
7 Neck curtain	GA3240 (fire proof wool) T1900300 (Nomex)
8 Retro-reflective Stickers	GA3230*xx (color versions)



[Your contacts worldwide]

MSA GALLET
 BP 90,Z.I.Sud
 01400 Châtillon sur Chalaronne
 Tel:+33 [0] 474-55 01 55
 Fax:+33 [0] 474-55 24 80
 E-Mail:message@msa-gallet.fr
 http://www.msa-gallet.fr

MSA Europe
 Thiemannstrasse 1
 12059 Berlin
 Germany
 Phone +49 [0] 30- 68 86 -555
 Fax +49 [0] 30- 68 86 -1517
 E-Mail:contact@msa-europe.com
 http://www.msa-europe.com

MSA [Britain] Limited
 East Shawhead
 Coatbridge ML 54 TD
 Scotland
 Phone +44 [0] 1236- 42 49 66
 Fax +44 [0] 1236- 44 08 81
 E-Mail: info@msabritain.co.uk
 http://www.msabritain.co.uk

