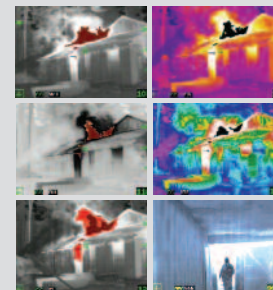


EVOLUTION® 6000 Plus Thermal Imaging Camera



A thermal imaging camera that's rich with features firefighters need for everyday use.

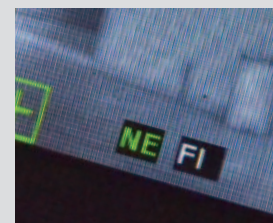
- NFPA 1801-compliant
- 2X/4X zoom gets a closer look at areas of interest
- 320X240 high definition image quality offers excellent resolution
- Six user-selectable color palettes provide flexibility to view thermal images
- Standard flashlight provides extra visibility for firefighter proximity to enhance safety and situational awareness
- Patented dual-handle design, for easy handoff on the fireground
- Three carabiner attachment points offer flexibility in attaching camera to firefighter
- Laser pointer pinpoints hot spots and other areas of interest to allow others to take fast, specific action
- Compass allows for faster rescues and improved situational awareness by displaying letters or icon for directional information
- Optional integrated range finder offers more usable information about surroundings to enable faster, more precise action from 16 to 210 feet (5 to 70 meters) away (replaces flashlight option)



Six color palettes



2X/4X zoom



Compass



Laser range finder

*Because every life has a **purpose...***

Technical Specifications

CONSTRUCTION	Flame retardant (material passes NFPA direct flame exposure test). IP67 [withstands immersion to 3 ft (1 meter)]
APPROXIMATE DIMENSIONS	7.3" x 4.8" x 11.6" (LxWxH) (185 mm x 122 mm x 295 mm)
SENSOR	Uncooled VOX microbolometer
ARRAY SIZE	320X240
WEIGHT	2.65 lbs (1.2 kg)
POWER SOURCE	Rechargeable lithium-ion battery

OPERATING TIME	3.5 hours at nominal 72°F (22°C)
FIELD OF VIEW	48° H; 37° V
INTRINSICALLY SAFE	Nonincendive equipment (UL Class 1, Div 2)
APPROVALS	NFPA 1801, 2013 Edition-compliant
NET EQUIVALENT TEMPERATURE DIFFERENCE	High Sensitivity 40 mK (0.040°C) (typical), 78 mK (0.078°C) (max) Low Sensitivity 234 mK (0.234°C)
ENVIRONMENTAL AMBIENT TEMPERATURE AND OPERATING TIME	176° F (80°C) > 30 minutes 248° F (120°C) > 20 minutes 500° F (260°C) > 6 minutes -22° F (-30°C) > 40 minutes -40° F (-40°C) > 25 minutes

Ordering Information

EVOLUTION 6000 PLUS TIC	
10145940	EVOLUTION 6000 Plus TIC (includes flashlight, laser pointer, degrees F, 2X/4X zoom, color palettes, compass)
10145951	EVOLUTION 6000 Plus TIC (includes laser range finder (feet), laser pointer, degrees F, 2X/4X zoom, color palettes, compass)
10145954	EVOLUTION 6000 Plus TIC (includes flashlight, laser pointer, degrees C, 2X/4X zoom, color palettes, compass)
10145955	EVOLUTION 6000 Plus TIC (includes laser range finder (meters), laser pointer, degrees C, 2X/4X zoom, color palettes, compass)

ACCESSORIES	
10145859	Multi-use charger (12V) kit
10148136	Vehicle mounted charger system
10147390	Vehicle mounting bracket
10145749	Reflective label ID kit (includes 3 sets of reflective ID labels)
10120606-SP	Lithium-ion battery
10145748	Tripod adapter
10040005	Carabiner
10127441-SP	Plastic carrying case
10040226	Retractable lanyard
10039515	Shoulder strap
10039516	Wrist strap
10148391-SP	Protective display covers (3 per package)

EVOLUTION 6000 CHARGING KITS	
10145750	EVOLUTION 6000 TIC Station Kit (includes carrying case, 2 rechargeable batteries, multi-use charger (North America), retractable lanyard and carabiner)
10145771	EVOLUTION 6000 TIC Vehicle Kit (includes 2 rechargeable batteries, vehicle charger, retractable lanyard and carabiner)

Note: This bulletin contains only a general description of the products shown. While uses and performance capabilities are described, under no circumstances shall the products be used by untrained or unqualified individuals and not until the product instructions including any warnings or cautions provided have been thoroughly read and understood. Only they contain the complete and detailed information concerning proper use and care of these products.



ID 3460-09-MC / Mar 2013
© MSA 2013 Printed in U.S.A.

MSA Corporate Center
1000 Cranberry Woods Drive
Cranberry Township, PA 16066 USA
Phone 724-776-8600
www.MSAsafety.com

U.S. Customer Service Center
Phone 1-800-MSA-2222
Fax 1-800-967-0398

MSA Canada
Phone 1-800-672-2222
Fax 1-800-967-0398

MSA Mexico
Phone 01 800 672 7222
Fax 52 - 44 2227 3943

MSA International
Phone 724-776-8626
Toll Free 1-800-672-7777
Fax 724-741-1559
Email msa.international@MSAsafety.com

Offices and representatives worldwide
For further information: